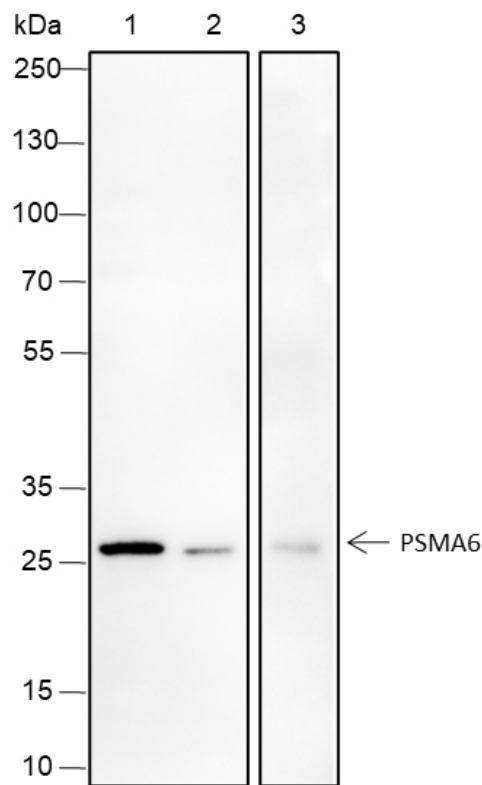


Mouse Anti-PSMA6 antibody

SLM-60492M

Product Name	PSMA6
Chinese Name	
Immunogen Species	Mouse
Clonality	Monoclonal
Clone NO.	D6C7
React Species	Human(predicted:Rat)
Applications	WB=1:500-1000,ICC/IF=1:100-500 not yet tested in other applications. optimal dilutions/concentrations should be determined by the end user.
Cellular localization	The nucleus The cell membrane
Form	Liquid
Concentration	1mg/ml
Lsotype	IgG2B/Kappa
Purification	Affinity purified by Protein G
Buffer Solution	1M TBS(pH7.4) with 1% BSA, 3% Proclin300 and 50% Glycerol.
Storage	Shipped at 4°C. Store at -20 °C for one year. Avoid repeated freeze/thaw cycles.
Attention	This product as supplied is intended for research use only, not for use in human, therapeutic or diagnostic applications.
PubMed	PubMed
Product Detail	参与大多数细胞内蛋白质水解降解的 20S 核心蛋白酶体复合体的成分。这种复合物通过与不同的调控粒子结合，在细胞内发挥许多重要作用。与两个 19S 调节颗粒结合，形成 26S 蛋白酶体，从而参与 Ubiquitin 化蛋白质的 ATP 依赖性降解。26S 蛋白酶体通过去除可能损害细胞功能的错误折叠或受损蛋白质，以及去除不再需要功能的蛋白质，在维持蛋白质内稳态中发挥关键作用。与 PA200 或 PA28 相关，20S 蛋白酶体介导 Ubiquitin 非依赖性蛋白质降解。这种类型的蛋白水解在包括精子发生（20S-PA200 复合物）或产生 MHC I 类抗原肽（20S-PA28 复合物）子集在内的几种途径中是必需的。

Product Picture



Blocking buffer: 5% NFDm/TBST

Primary ab dilution: 1:1000

Primary ab incubation condition: 2 hours at room temperature

Secondary ab: Goat Anti-Mouse IgG H&L (HRP)

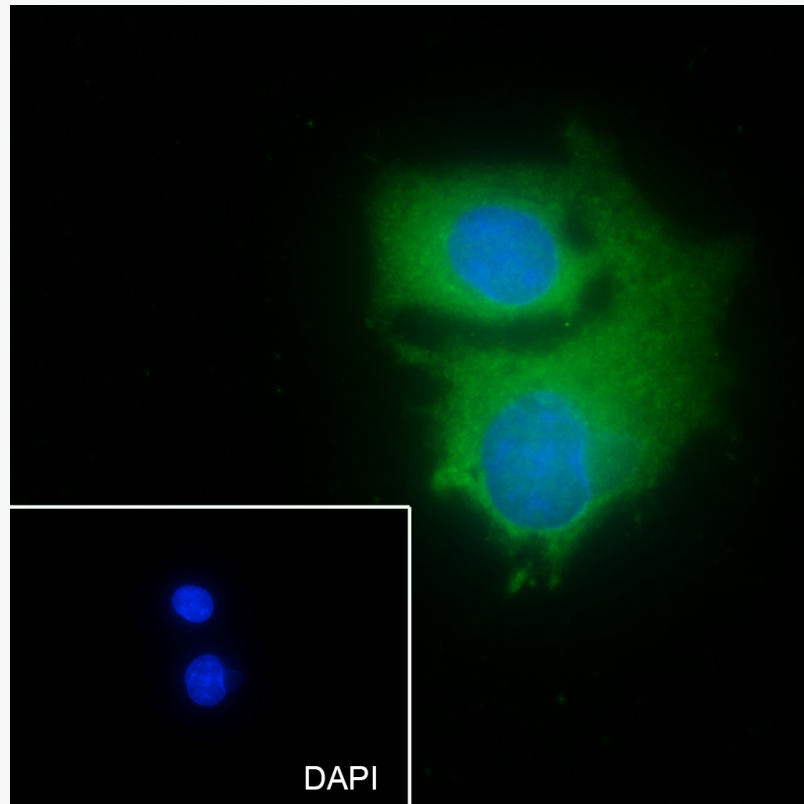
Lysate:1: HeLa, 2: 293T, 3: Rat liver

Protein loading quantity: 20 μ g

Exposure time: 10 s

Predicted MW: 30 kDa

Observed MW: 30 kDa



Cell line: HepG2

Fixative: 100% Ice-cold methanol

Permeabilization: 0.1% TritonX-100

Primary ab dilution: 1:50

Primary incubation condition: 4°C overnight

Secondary ab: Goat Anti-Mouse IgG

Nuclear counter stain: DAPI (Blue)

Comment: Color green is the positive signal for SLM-60492M