



## Mouse Anti-MYL3 antibody

SLM-60491M

**Product Name** MYL3

**Chinese Name**

**Immunogen Species** Mouse

**Clonality** Monoclonal

**Clone NO.** B10A6

**React Species** Human,Mouse,Rat

**Applications** WB=1:1000-5000,IHC-P=1:100-500,IHC-F=1:100-500,IF=1:100-500 (Paraffin sections need antigen repair)

not yet tested in other applications.

optimal dilutions/concentrations should be determined by the end user.

**Cellular localization** The cell membrane

**Form** Liquid

**Concentration** 1mg/ml

**Lsotype** IgG1/Kappa

**Purification** Affinity purified by Protein G

**Buffer Solution** 1M TBS(pH7.4) with 1% BSA, 3% Proclin300 and 50% Glycerol.

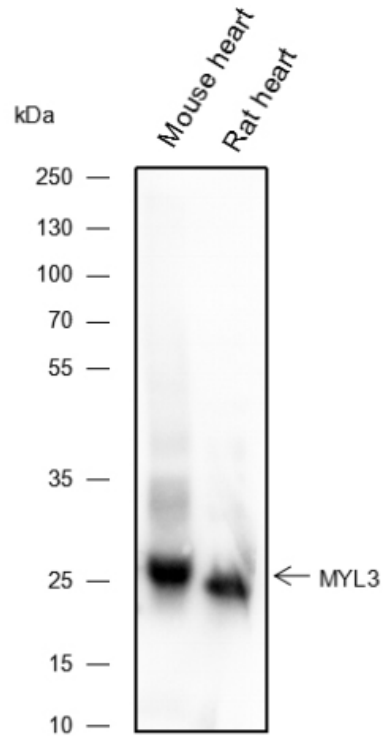
**Storage** Shipped at 4°C. Store at -20 °C for one year. Avoid repeated freeze/thaw cycles.

**Attention** This product as supplied is intended for research use only, not for use in human, therapeutic or diagnostic applications.

**PubMed** [PubMed](#)

**Product Detail** 肌球蛋白调节轻链，不结合钙。

**Product  
Picture**



Blocking buffer: 5% NFDN/TBST

Primary ab dilution: 1:5000

Primary ab incubation condition: 2 hours at room temperature

Secondary ab: Goat Anti-Mouse IgG H&L (HRP)

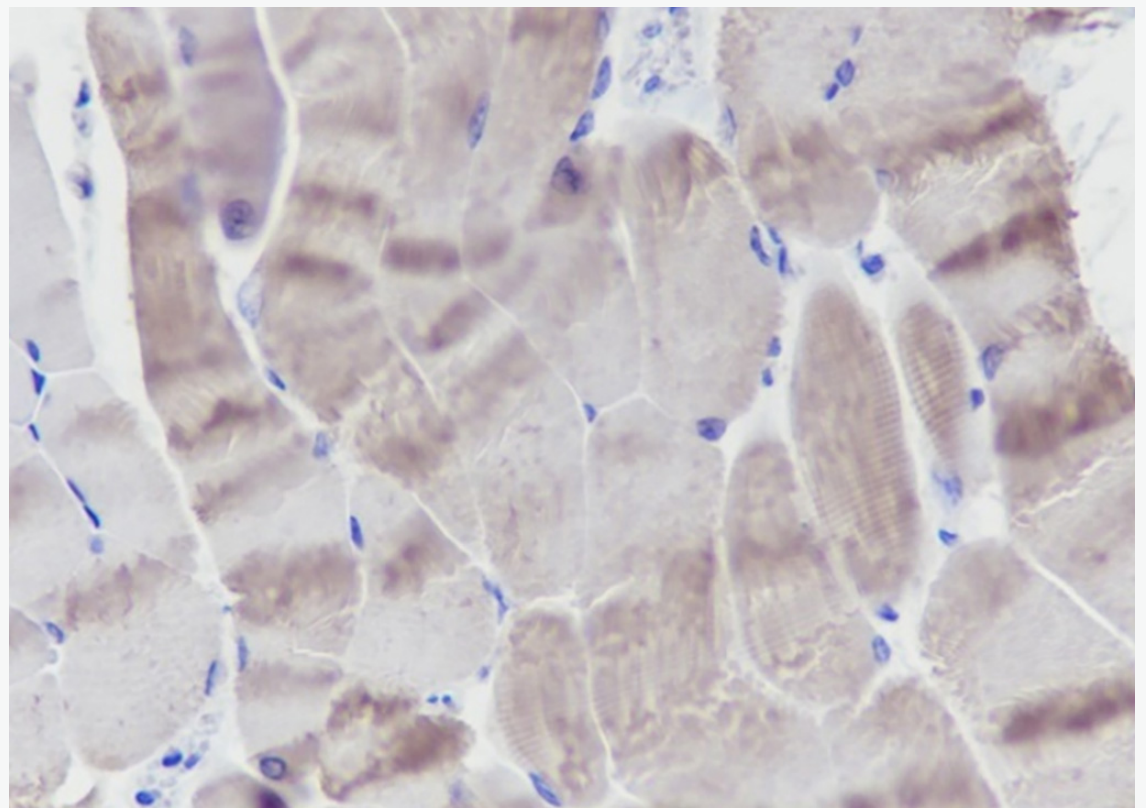
Lysate: Mouse heart, Rat heart

Protein loading quantity: 20  $\mu$ g

Exposure time: 1 s

Predicted MW: 22-25 kDa

Observed MW: 22-25 kDa



Tissue: Mouse skeletal muscle

Section type: Formalin fixed & Paraffin -embedded section

Retrieval method: High temperature and high pressure

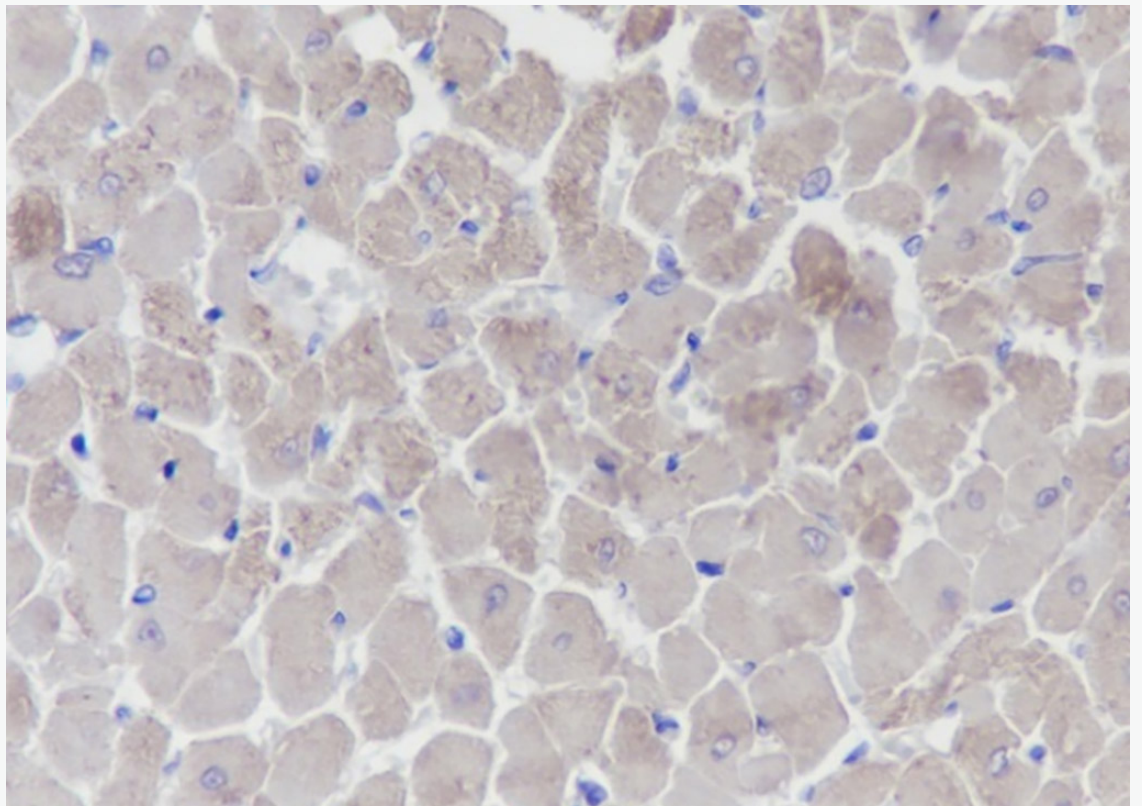
Retrieval buffer: Tris/EDTA buffer, pH 9.0 Primary ab dilution: 1:50

Primary ab incubation condition: 1 hour at room temperature

Secondary ab: SP Kit(Mouse)(sp-0024)

Counter stain: Hematoxylin (Blue)

Comment: Color brown is the positive signal for SLM-60491M



Tissue: Rat heart

Section type: Formalin fixed & Paraffin -embedded section

Retrieval method: High temperature and high pressure

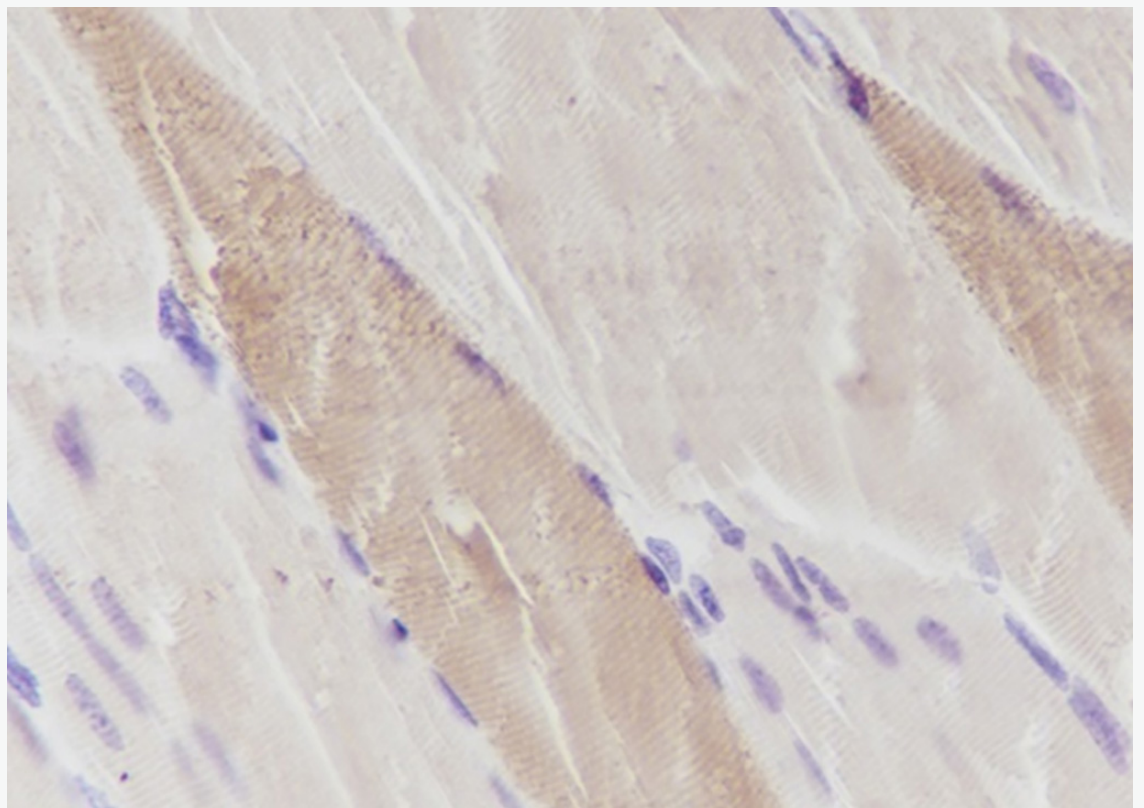
Retrieval buffer: Tris/EDTA buffer, pH 9.0 Primary ab dilution: 1:50

Primary ab incubation condition: 1 hour at room temperature

Secondary ab: SP Kit(Mouse)(sp-0024)

Counter stain: Hematoxylin (Blue)

Comment: Color brown is the positive signal for SLM-60491M



Tissue: Human skeletal muscle

Section type: Formalin fixed & Paraffin -embedded section

Retrieval method: High temperature and high pressure

Retrieval buffer: Tris/EDTA buffer, pH 9.0 Primary ab dilution: 1:50

Primary ab incubation condition: 1 hour at room temperature

Secondary ab: SP Kit(Mouse)(sp-0024)

Counter stain: Hematoxylin (Blue)

Comment: Color brown is the positive signal for SLM-60491M