



SUNLONG

SunLong Biotech Co.,LTD

Tel: 0086-571-56623320 Fax:0086-571-56623318

E-mail:sales@sunlongbiotech.com

www.sunlongbiotech.com

Rabbit Anti-ALDOA antibody

SLM-60489R

Product Name ALDOA

Immunogen Species Rabbit

Clonality Monoclonal

Clone NO. G5E7

React Species Human,Mouse,Rat

WB=1:500-2000,IHC-P=1:100-500,IHC-F=1:100-500,ICC/IF=1:50-200,IF=1:100-500
(Paraffin sections need antigen repair)

Applications not yet tested in other applications.
optimal dilutions/concentrations should be determined by the end user.

Cellular localization The cell membrane

Form Liquid

Concentration 1mg/ml

Lsotype IgG/Kappa

Purification Affinity purified by Protein A

Buffer Solution 1M TBS(pH7.4) with 1% BSA, 3% Proclin300 and 50% Glycerol.

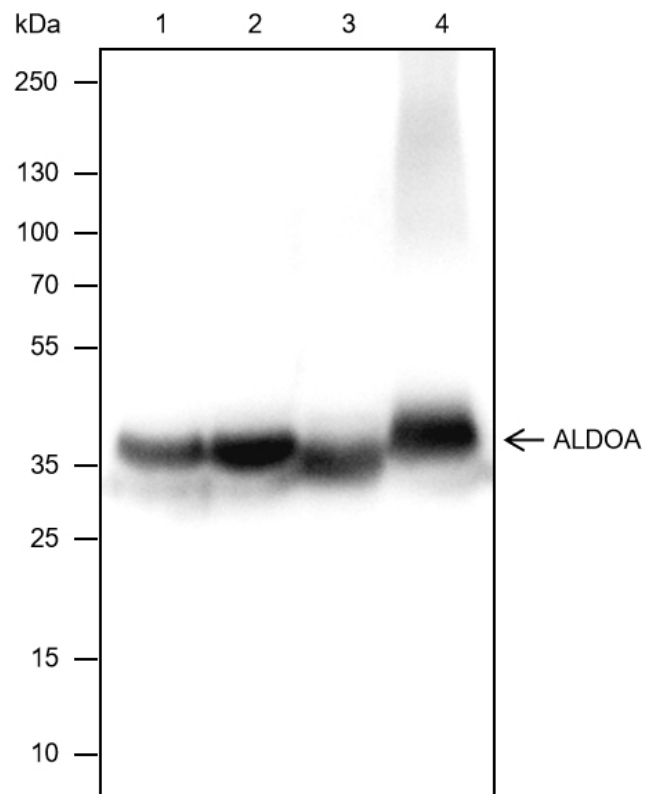
Storage Shipped at 4°C. Store at -20 °C for one year. Avoid repeated freeze/thaw cycles.

Attention This product as supplied is intended for research use only, not for use in human, therapeutic or diagnostic applications.

PubMed [PubMed](#)

Product Detail 在糖酵解和糖异生中起关键作用。此外，还可以作为支架蛋白。

**Product
Picture**



Blocking buffer: 5% NFDm/TBST

Primary Ab dilution: 1:1000

Primary Ab incubation condition: 2 hours at room temperature

Secondary Ab: Goat Anti-Rabbit IgG H&L (HRP)

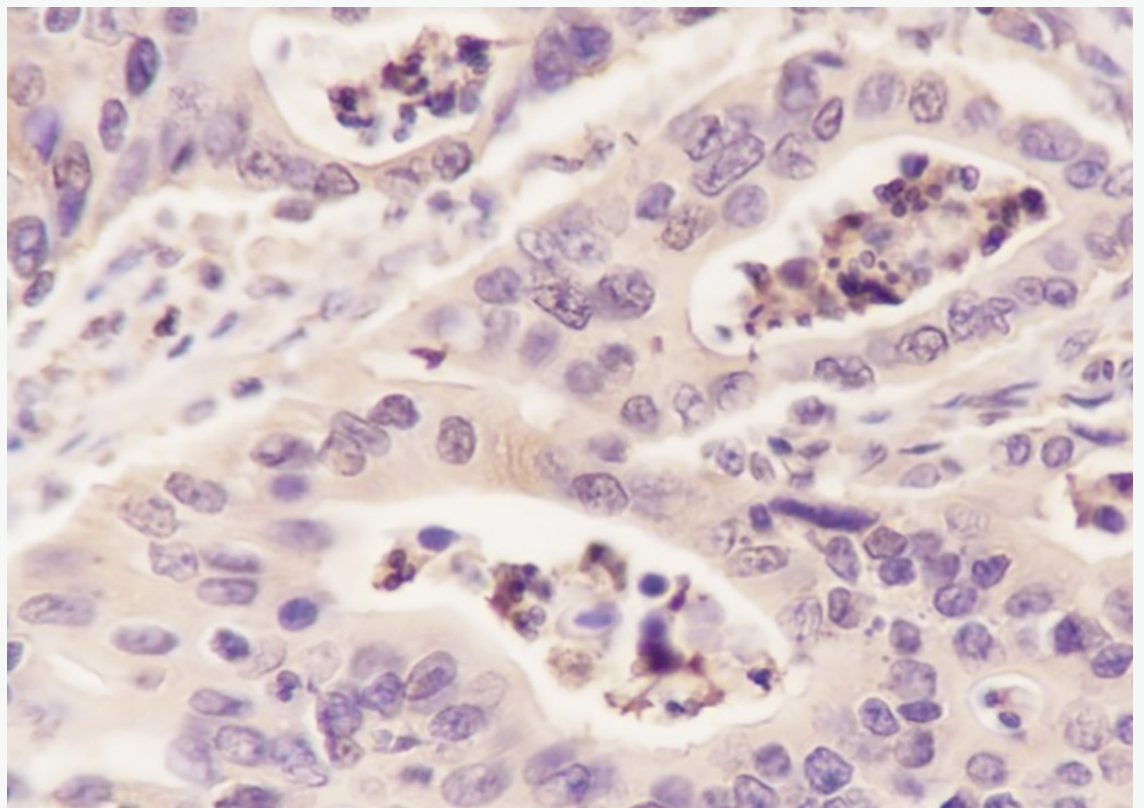
Lysate: 1: MCF7, 2: HepG2, 3: Mouse kidney, 4: Rat brain

Protein loading quantity: 20 μ g

Exposure time: 1 s

Predicted MW: 39 kDa

Observed MW: 35 kDa



Tissue: Human colon cancer

Section type: Formalin-fixed & Paraffin -embedded section

Retrieval method: High temperature and high pressure

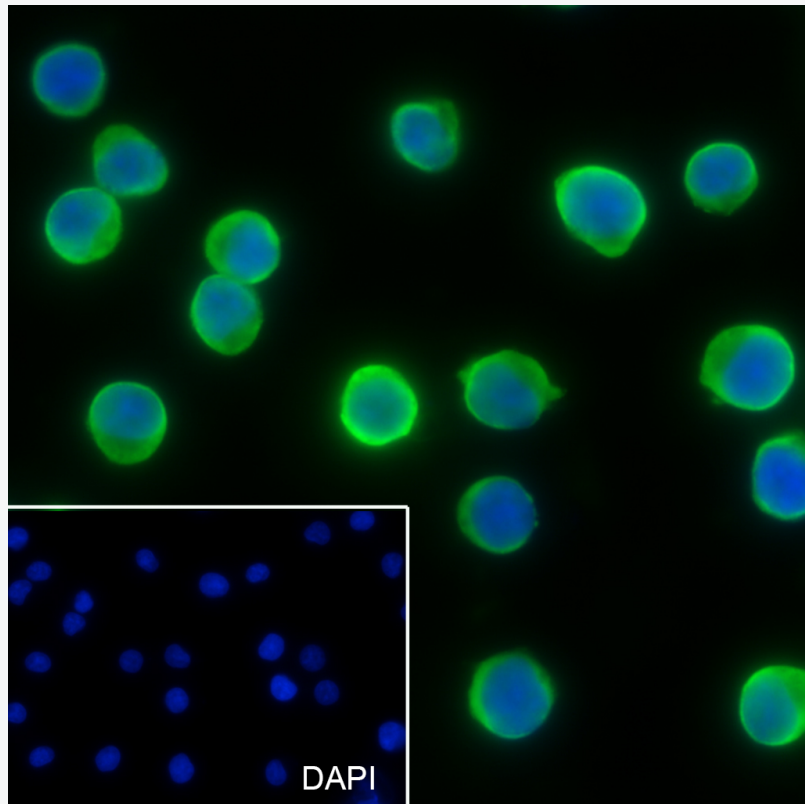
Retrieval buffer: Tris/EDTA buffer, pH 9.0 Primary Ab dilution: 1:100

Primary Ab incubation condition: 1 hour at room temperature

Secondary Ab: SP Kit(Mouse)(sp-0024)

Counter stain: Hematoxylin (Blue)

Comment: Color brown is the positive signal for SLM-60489R



Cell line: Jurkat

Fixative: 4% Paraformaldehyde

Permeabilization: 0.1% Triton X-100

Primary Ab dilution: 1:50

Primary incubation condition: 4°C overnight

Secondary Ab: Goat Anti-Rabbit IgG

Nuclear counter stain: DAPI (Blue)

Comment: Color green is the positive signal for SLM-60489R