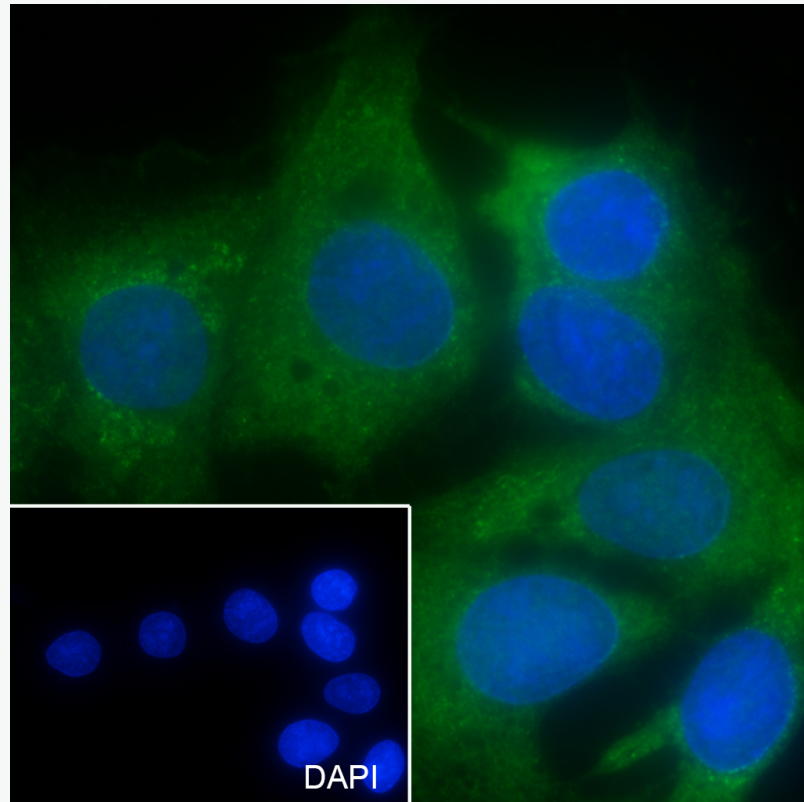


Mouse Anti-SMYD2 antibody

SLM-60487M

Product Name	SMYD2
Chinese Name	
Immunogen Species	Mouse
Clonality	Monoclonal
Clone NO.	B10D2
React Species	Human(predicted:Rat)
Applications	WB=1:500-1000,ICC/IF=1:100-500 not yet tested in other applications. optimal dilutions/concentrations should be determined by the end user.
Cellular localization	The nucleus The cell membrane
Form	Liquid
Concentration	1mg/ml
Lsotype	IgG1/Kappa
Purification	Affinity purified by Protein G
Buffer Solution	1M TBS(pH7.4) with 1% BSA, 3% Proclin300 and 50% Glycerol.
Storage	Shipped at 4°C. Store at -20 °C for one year. Avoid repeated freeze/thaw cycles.
Attention	This product as supplied is intended for research use only, not for use in human, therapeutic or diagnostic applications.
PubMed	PubMed
Product Detail	使组蛋白和非组蛋白（包括 p53/TP53 和 RB1）甲基化的蛋白质赖氨酸 N-甲基转移酶。体内特异性地三甲基化组蛋白 H3'赖氨酸-4'（H3K4me3），这种活动需要与 HSP90alpha 相互作用。在 p53/TP53 上显示更高的甲基转移酶活性。一甲基化 p53/TP53 的 Lys-370，导致 p53/TP53 的 DNA 结合活性和随后的转录调节活性降低。“Lys-860”处的 RB1 单甲基化物。

Product Picture



Cell line: HepG2

Fixative: 100% Ice-cold methanol

Permeabilization: 0.1% Triton X-100

Primary Ab dilution: 1:50

Primary incubation condition: 4°C overnight

Secondary Ab: Goat Anti-Rabbit IgG

Nuclear counter stain: DAPI (Blue)

Comment: Color green is the positive signal for SLM-60487M