

Mouse Anti-PSMB8 antibody

SLM-60486M

Product Name PSMB8

Chinese Name

Immunogen Species Mouse

Clonality Monoclonal

Clone NO. H12B10

React Species Human,Rat

WB=1:500-1000,IHC-P=1:100-500,IHC-F=1:100-500,ICC/IF=1:100-500,IF=1:100-500
(Paraffin sections need antigen repair)

Applications

not yet tested in other applications.

optimal dilutions/concentrations should be determined by the end user.

Cellular localization The nucleus The cell membrane

Form Liquid

Concentration 1mg/ml

Lsotype IgG1/Kappa

Purification Affinity purified by Protein G

Buffer Solution 1M TBS(pH7.4) with 1% BSA, 3% Proclin300 and 50% Glycerol.

Storage Shipped at 4°C. Store at -20 °C for one year. Avoid repeated freeze/thaw cycles.

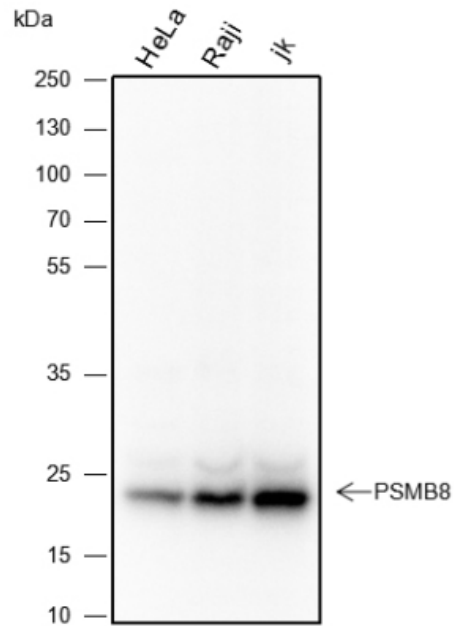
Attention This product as supplied is intended for research use only, not for use in human, therapeutic or diagnostic applications.

PubMed [PubMed](#)

Product Detail

蛋白酶体是一种多催化蛋白酶复合物，其特点是在中性或稍碱性 pH 下，它能与邻近离去基团的 Arg、Phe、Tyr、Leu 和 Glu 切割肽。蛋白酶体具有 ATP 依赖性蛋白水解活性，该亚单位参与抗原处理以产生 I 类结合肽。用 PSMB8 替换 PSMB5 可增加免疫蛋白酶体在疏水和碱性残基后切割模型肽的能力。参与由两个单独的蛋白酶体裂解产物连接而产生的剪接肽，这两个产物在亲本蛋白质中不相邻。作为 Interferon- γ 诱导敏感性的主要成分。通过 Apoptosis 抑制剂 MCL1 的降解在 Apoptosis 中起关键作用。可能参与炎症反应途径。在癌细胞中，亚型 1 (E2) 被亚型 2 (E1) 取代导致免疫蛋白酶体缺乏。前脂肪 Cell differentiation 为脂肪细胞所必需的。

**Product
Picture**



Blocking buffer: 5% NFDN/TBST

Primary ab dilution: 1:1000

Primary ab incubation condition: 2 hours at room temperature

Secondary ab: Goat Anti-Rabbit IgG H&L (HRP)

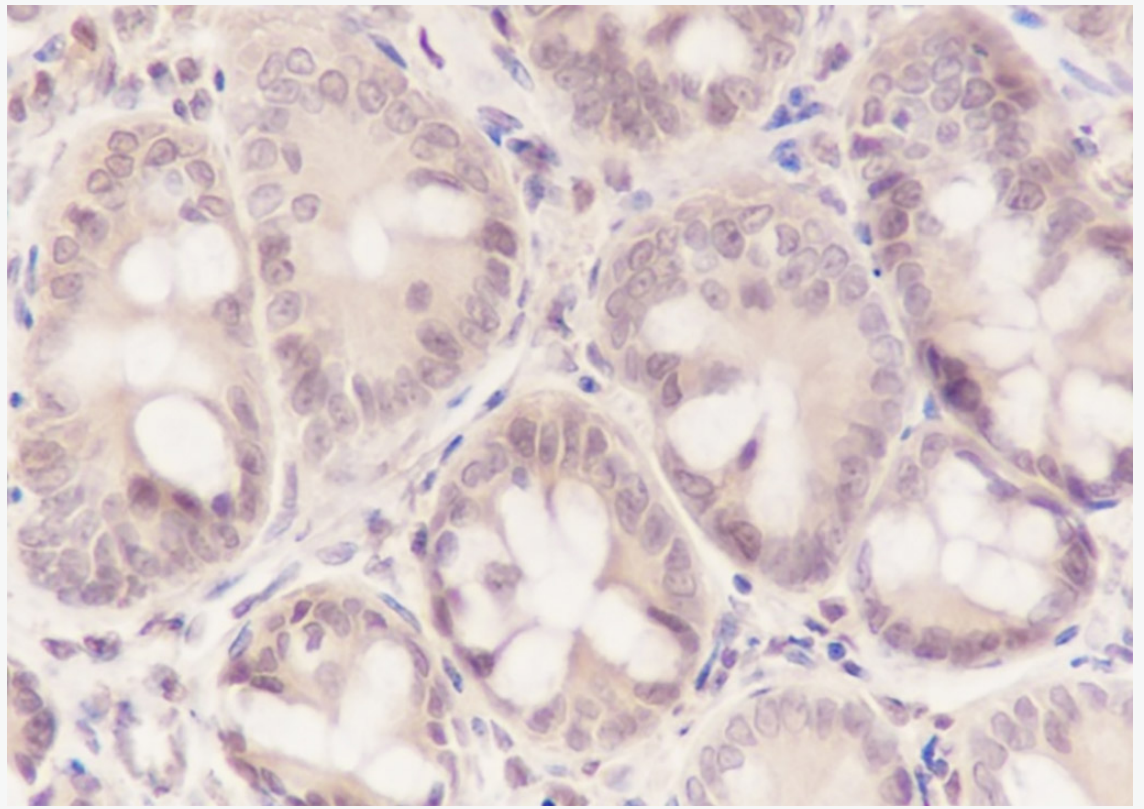
Lysate: HeLa, Raji, Jurkat

Protein loading quantity: 20 μ g

Exposure time: 1 s

Predicted MW: 23 kDa

Observed MW: 23 kDa



Tissue: Rat colon

Section type: Formalin fixed & Paraffin -embedded section

Retrieval method: High temperature and high pressure

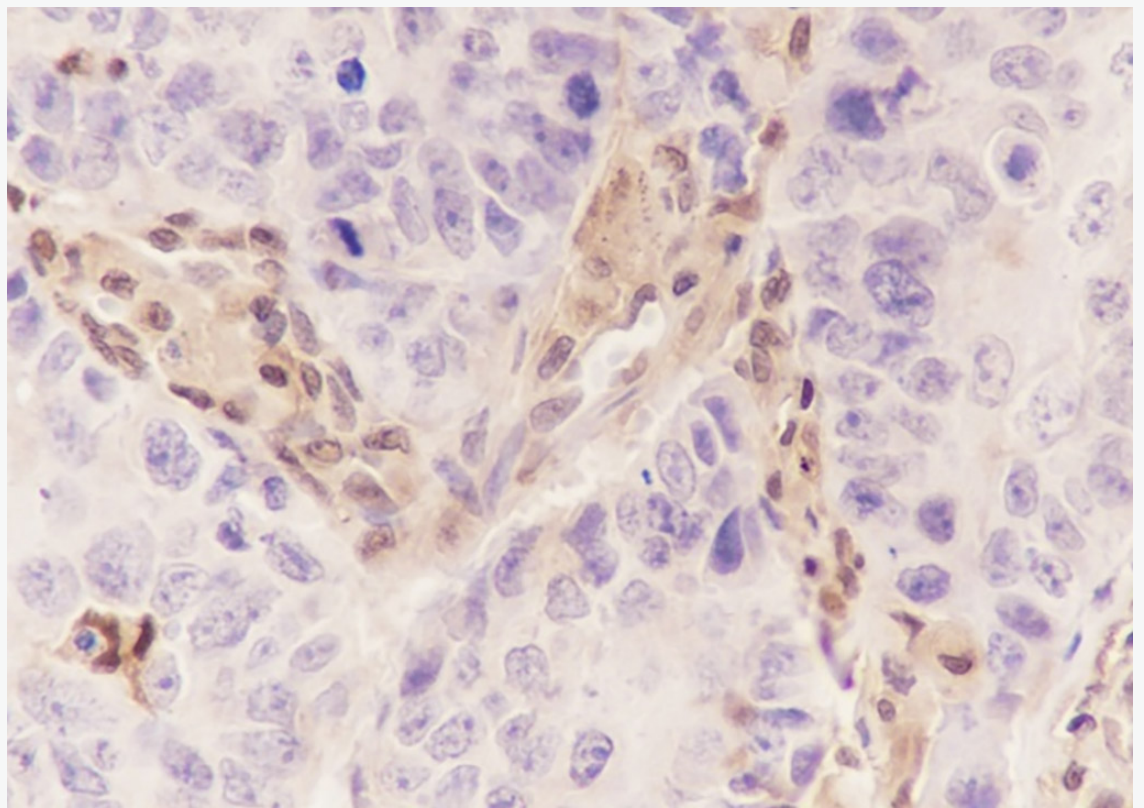
Retrieval buffer: Tris/EDTA buffer, pH 9.0 Primary ab dilution: 1:100

Primary ab incubation condition: 1 hour at room temperature

Secondary ab: SP Kit(Mouse)(sp-0024)

Counter stain: Hematoxylin (Blue)

Comment: Color brown is the positive signal for SLM-60486M



Tissue: Human lung squamous cancer

Section type: Formalin fixed & Paraffin -embedded section

Retrieval method: High temperature and high pressure

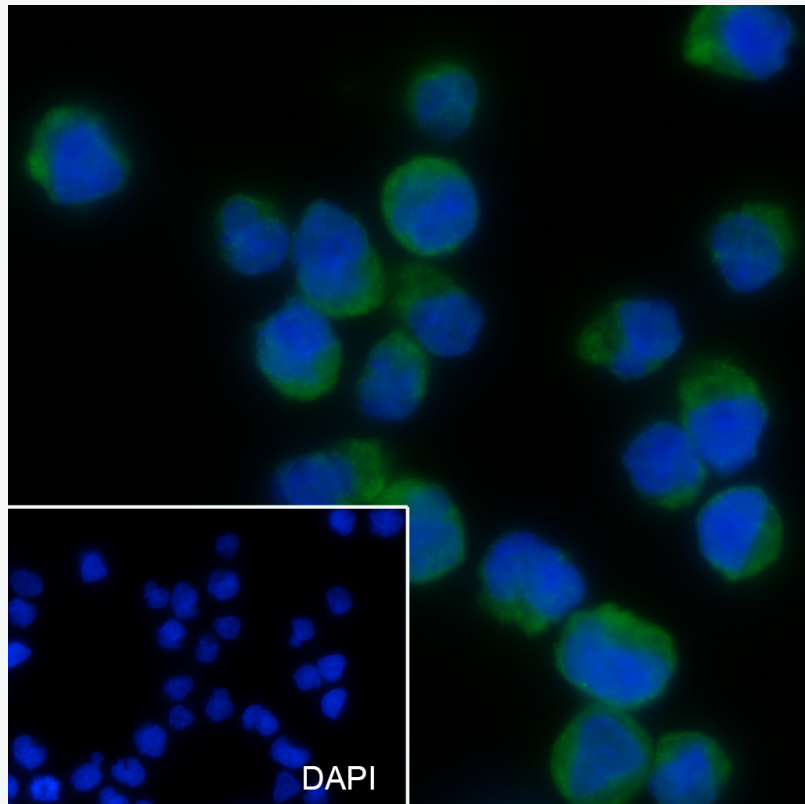
Retrieval buffer: Tris/EDTA buffer, pH 9.0 Primary ab dilution: 1:100

Primary ab incubation condition: 1 hour at room temperature

Secondary ab: SP Kit(Mouse)(sp-0024)

Counter stain: Hematoxylin (Blue)

Comment: Color brown is the positive signal for SLM-60486M



Cell line: Raji

Fixative: 4% Paraformaldehyde

Permeabilization: 0.1% TritonX-100

Primary ab dilution: 1:50

Primary incubation condition: 4°C overnight

Secondary ab: Goat Anti-Rabbit IgG

Nuclear counter stain: DAPI (Blue)

Comment: Color green is the positive signal for SLM-60486M