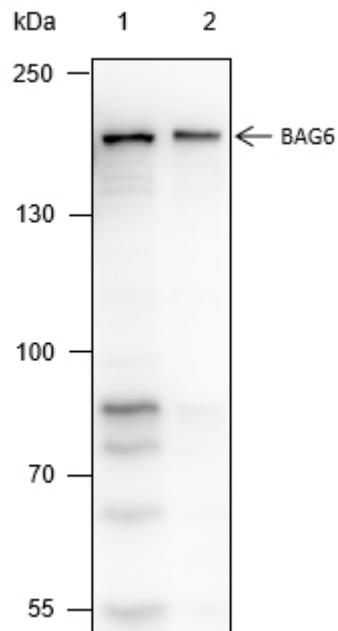


Mouse Anti-BAG6 antibody

SLM-60485M

Product Name	BAG6
Chinese Name	
Immunogen Species	Mouse
Clonality	Monoclonal
Clone NO.	B5E6
React Species	Human,Mouse,Rat
Applications	WB=1:500-1000,IHC-P=1:100-500,IHC-F=1:100-500,ICC/IF=1:100-500,IF=1:100-500 (Paraffin sections need antigen repair) not yet tested in other applications. optimal dilutions/concentrations should be determined by the end user.
Cellular localization	The nucleus The cell membrane Secretory protein
Form	Liquid
Concentration	1mg/ml
Lsotype	IgG1/Kappa
Purification	Affinity purified by Protein G
Buffer Solution	1M TBS(pH7.4) with 1% BSA, 3% Proclin300 and 50% Glycerol.
Storage	Shipped at 4°C. Store at -20 °C for one year. Avoid repeated freeze/thaw cycles.
Attention	This product as supplied is intended for research use only, not for use in human, therapeutic or diagnostic applications.
PubMed	PubMed
Product Detail	三磷酸腺苷非依赖性分子伴侣防止错误折叠和疏水性蛋白质斑块的聚集。 BAG6/BAT3 复合物作为细胞溶质蛋白质量控制复合物的一部分发挥作用， BAG6/BAT3 复合物维持这些客户蛋白处于可溶状态，并参与它们向内质网的适当递送，或者促进它们向蛋白酶体的分选，在蛋白酶体中它们经历降解。BAG6/BAT3 复合物参与尾锚定/II型 Transmembrane protein 翻译后传递到内质网膜。它被招募到核糖体，与新合成的尾锚定蛋白的跨膜区相互作用，并与 SGTA 和 ASNA1 一起介导它们向内质网的传递。



**Product
Picture**

Blocking buffer: 5% NFDN/TBST

Primary ab dilution: 1:1000

Primary ab incubation condition: 2 hours at room temperature

Secondary ab: Goat Anti-Rabbit IgG H&L (HRP)

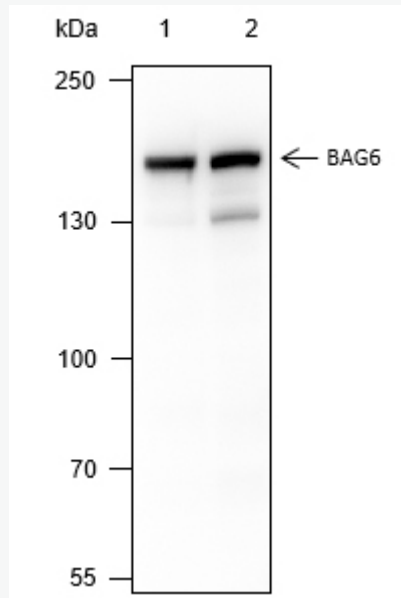
Lysate: 1: RAW 267.7, 2: A20

Protein loading quantity: 20 μ g

Exposure time: 30 s

Predicted MW: 150 kDa

Observed MW: 150 kDa



Blocking buffer: 5% NFDN/TBST

Primary ab dilution: 1:1000

Primary ab incubation condition: 2 hours at room temperature

Secondary ab: Goat Anti-Rabbit IgG H&L (HRP)

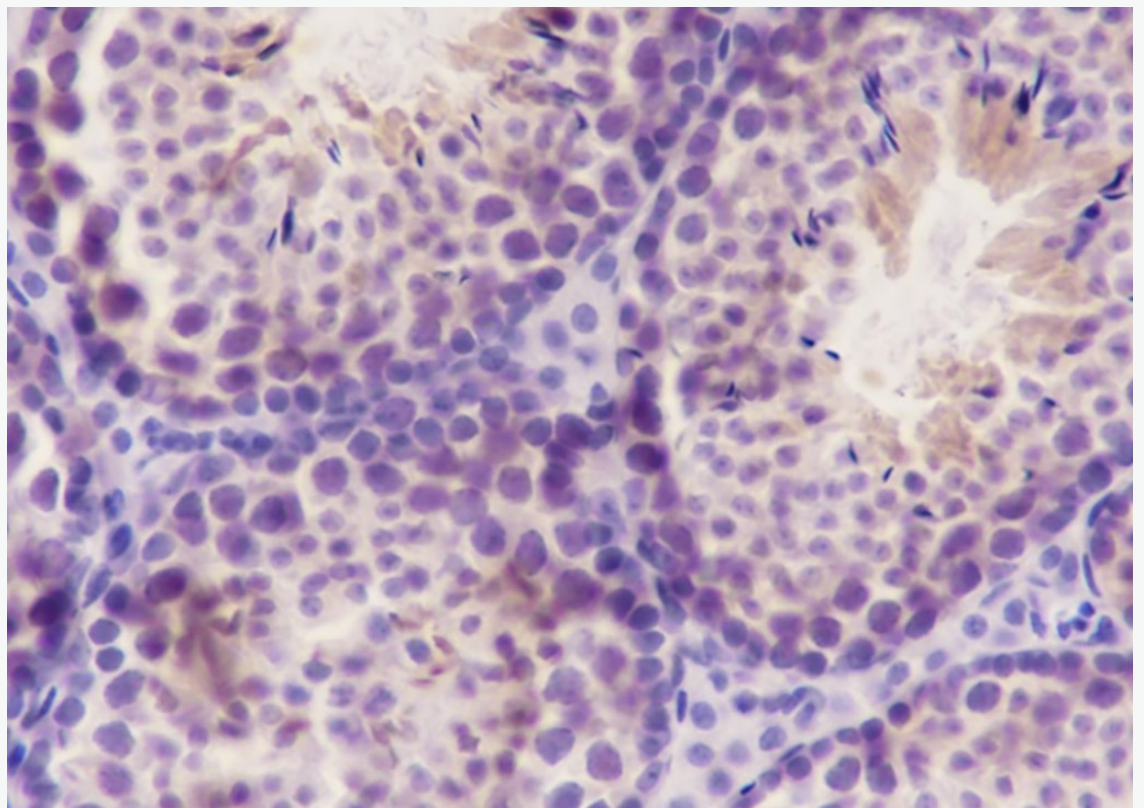
Lysate: 1: HeLa, 2: SH-SY5Y

Protein loading quantity: 20 μ g

Exposure time: 3 s

Predicted MW: 150 kDa

Observed MW: 150 kDa



Tissue: Mouse testis

Section type: Formalin fixed & Paraffin -embedded section

Retrieval method: High temperature and high pressure

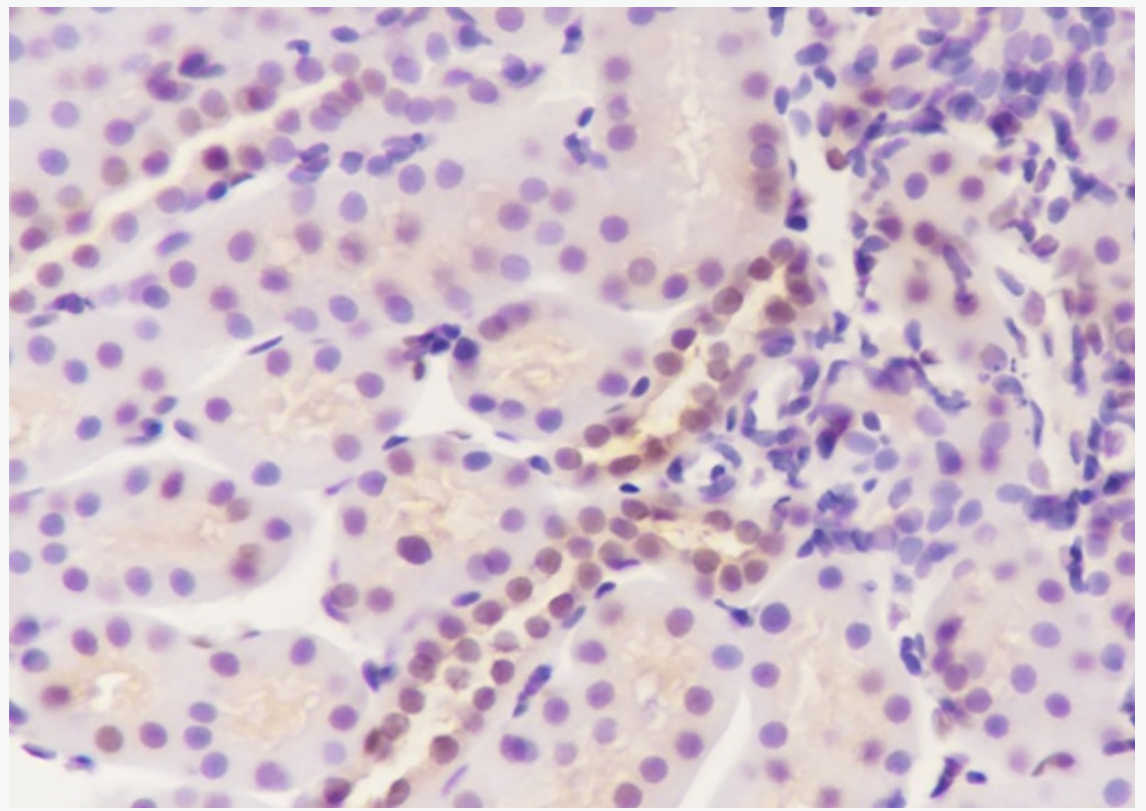
Retrieval buffer: Tris/EDTA buffer, pH 9.0 Primary ab dilution: 1:100

Primary ab incubation condition: 1 hour at room temperature

Secondary ab: SP Kit(Mouse)(sp-0024)

Counter stain: Hematoxylin (Blue)

Comment: Color brown is the positive signal for SLM-60485M



Tissue: Rat kidney

Section type: Formalin fixed & Paraffin -embedded section

Retrieval method: High temperature and high pressure

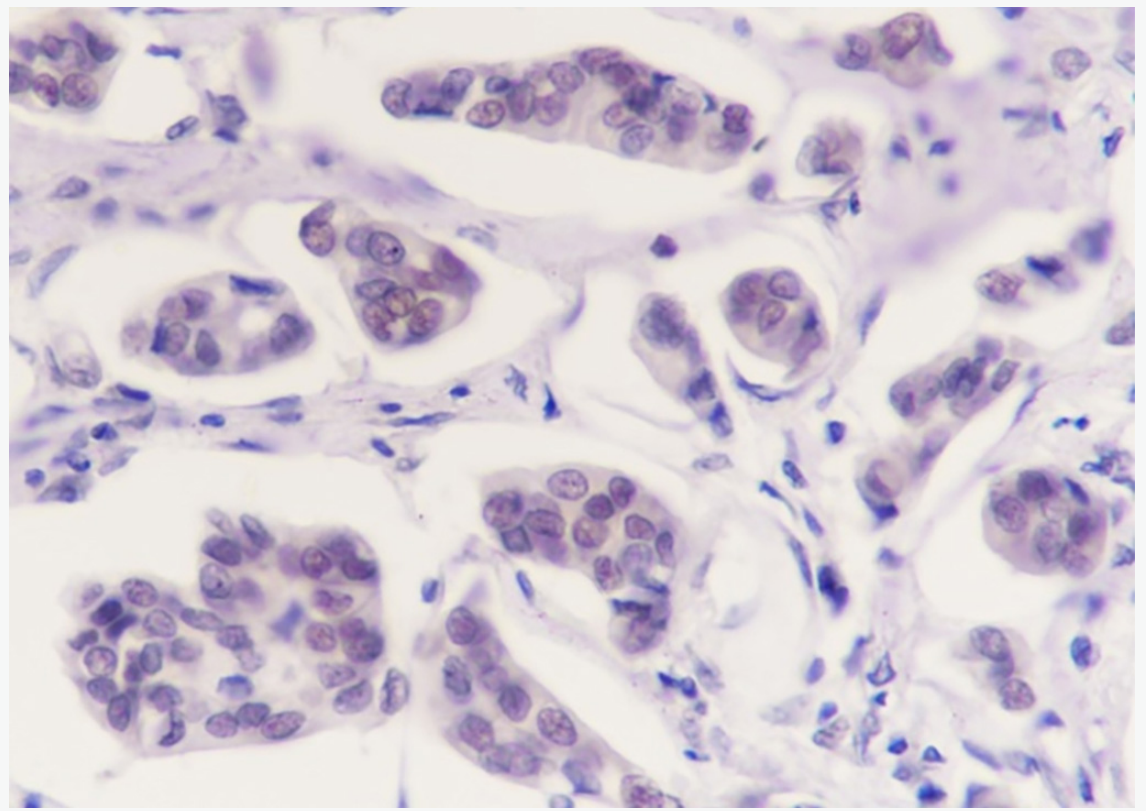
Retrieval buffer: Tris/EDTA buffer, pH 9.0 Primary ab dilution: 1:100

Primary ab incubation condition: 1 hour at room temperature

Secondary ab: SP Kit(Mouse)(sp-0024)

Counter stain: Hematoxylin (Blue)

Comment: Color brown is the positive signal for SLM-60485M



Tissue: Human breast cancer

Section type: Formalin fixed & Paraffin -embedded section

Retrieval method: High temperature and high pressure

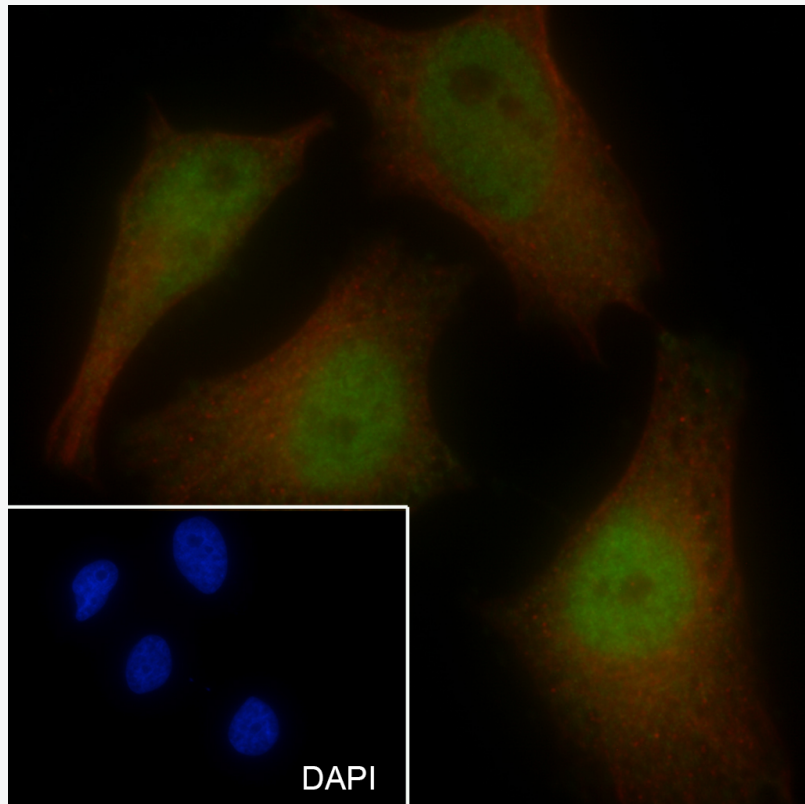
Retrieval buffer: Tris/EDTA buffer, pH 9.0 Primary ab dilution: 1:100

Primary ab incubation condition: 1 hour at room temperature

Secondary ab: SP Kit(Mouse)(sp-0024)

Counter stain: Hematoxylin (Blue)

Comment: Color brown is the positive signal for SLM-60485M



Cell line: HeLa

Fixative: 4% Paraformaldehyde

Permeabilization: 0.1% TritonX-100

Primary ab dilution: 1:50

Primary incubation condition: 4°C overnight

Secondary ab: Goat Anti-Rabbit IgG

Nuclear counter stain: DAPI (Blue)

Counter stain: Tubulin (Red)

Comment: Color green is the positive signal for SLM-60485M