

Mouse Anti-ATP5A1 antibody

SLM-60482M

Product Name ATP5A1

Immunogen Species Mouse

Clonality Monoclonal

Clone NO. G2A8

React Species Human,Mouse,Rat

WB=1:500-2000,IHC-P=1:100-500,IHC-F=1:100-500,ICC/IF=1:50-200,IF=1:100-500
(Paraffin sections need antigen repair)

Applications not yet tested in other applications.
optimal dilutions/concentrations should be determined by the end user.

Cellular localization cytoplasmic

Form Liquid

Concentration 1mg/ml

Lsotype IgG2B/Kappa

Purification Affinity purified by Protein G

Buffer Solution 1M TBS(pH7.4) with 1% BSA, 3% Proclin300 and 50% Glycerol.

Storage Shipped at 4°C. Store at -20 °C for one year. Avoid repeated freeze/thaw cycles.

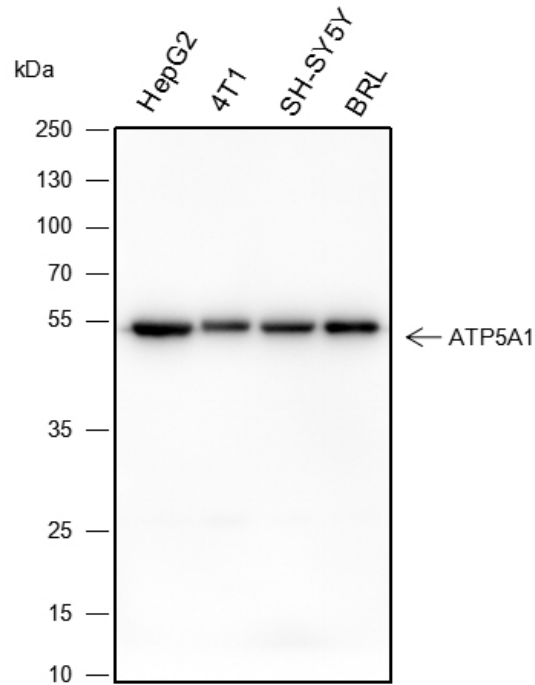
Attention This product as supplied is intended for research use only, not for use in human, therapeutic or diagnostic applications.

PubMed [PubMed](#)

Product Detail

Mitochondrion 膜 ATP 合酶 (F (1) F (0) ATP 合酶或复合物 V) 在呼吸链电子传递复合物产生的质子梯度作用下, 由 ADP 产生 ATP。F-型 atp 酶由两个结构域组成, F (1) -包含膜外催化核心, F (0) -包含膜质子通道, 通过中心柄和外围柄连接在一起。在催化过程中, F (1) 催化结构域的 ATP 合成通过一个旋转机制与质子转运相耦合。亚单位 α 和 β 在 F (1) 中形成催化核心。围绕着 α (3) β (3) 亚基旋转的中央茎导致 β 亚基上三个单独催化位点的 ATP 水解。 α 亚单位不具有催化高亲和力 ATP 结合位点。结合细菌铁载体肠杆菌素, 并能促进肠杆菌素衍生铁离子的 Mitochondrion 积累。

**Product
Picture**



Blocking buffer: 5% NFDm/TBST

Primary ab dilution: 1:1000

Primary ab incubation condition: 2 hours at room temperature

Secondary ab: Goat Anti-Rabbit IgG H&L (HRP)

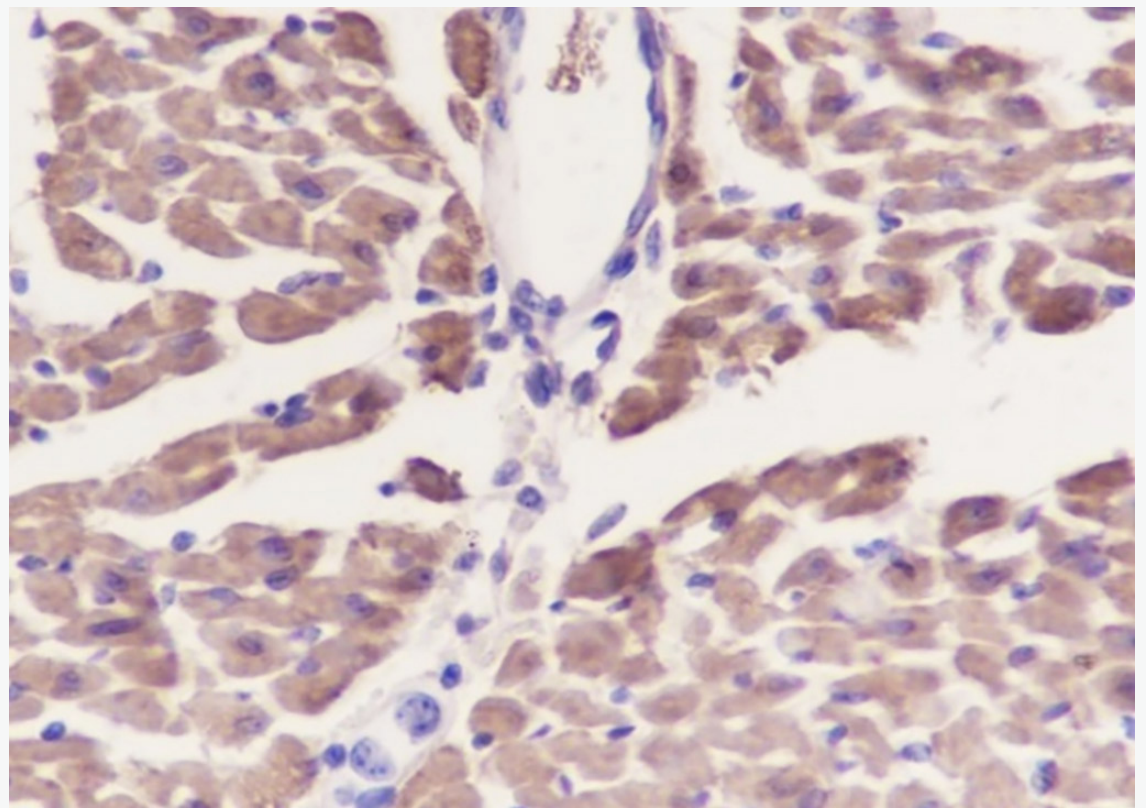
Lysate: HepG2, 4T1, SH-SY5Y, BRL

Protein loading quantity: 20 μ g

Exposure time: 3 s

Predicted MW: 50 kDa

Observed MW: 50 kDa



Tissue: Mouse heart

Section type: Formalin fixed & Paraffin -embedded section

Retrieval method: High temperature and high pressure

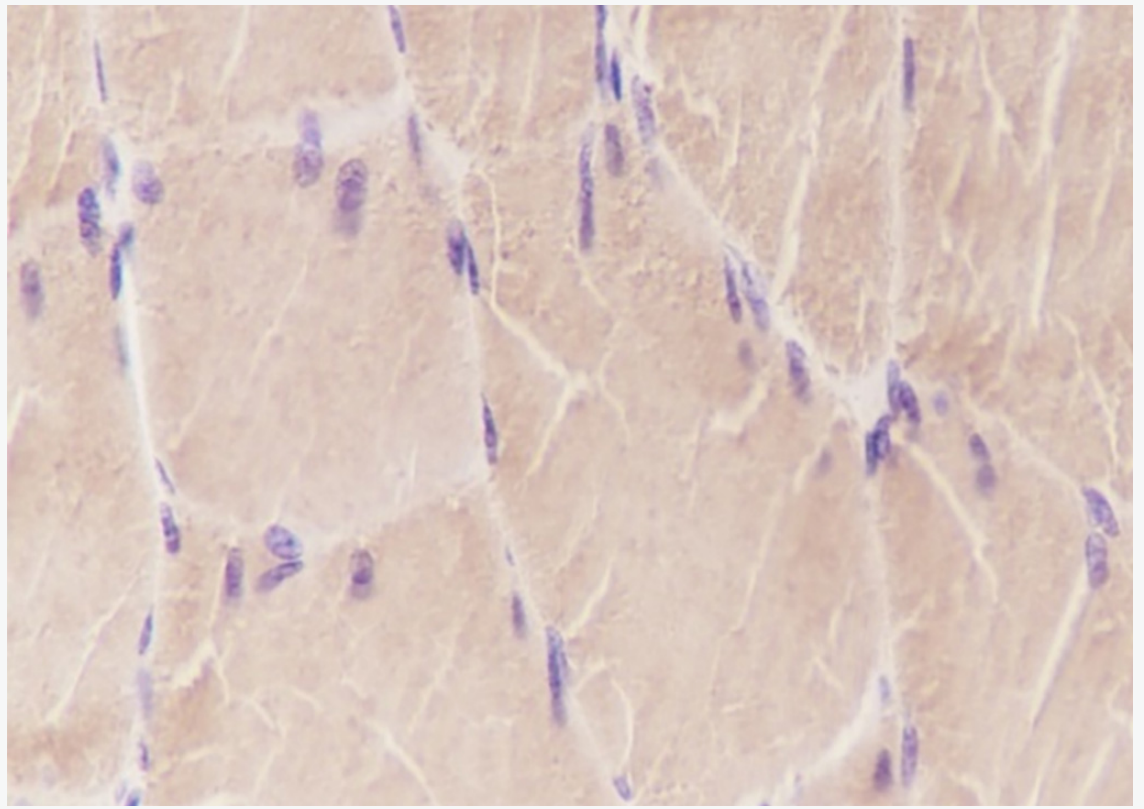
Retrieval buffer: Tris/EDTA buffer, pH 9.0 Primary ab dilution: 1:100

Primary ab incubation condition: 1 hour at room temperature

Secondary ab: SP Kit(Mouse)(sp-0024)

Counter stain: Hematoxylin (Blue)

Comment: Color brown is the positive signal for SLM-60482M



Tissue: Human skeletal muscle

Section type: Formalin fixed & Paraffin -embedded section

Retrieval method: High temperature and high pressure

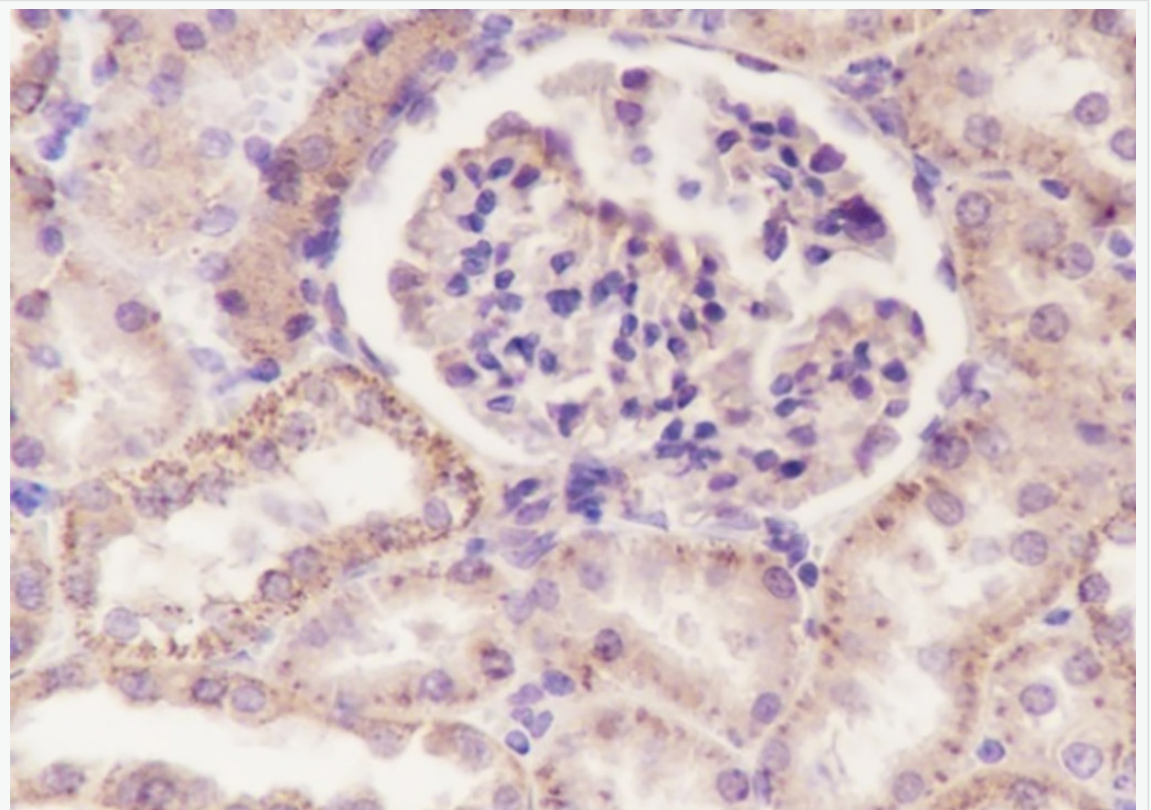
Retrieval buffer: Tris/EDTA buffer, pH 9.0 Primary ab dilution: 1:100

Primary ab incubation condition: 1 hour at room temperature

Secondary ab: SP Kit(Mouse)(sp-0024)

Counter stain: Hematoxylin (Blue)

Comment: Color brown is the positive signal for SLM-60482M



Tissue: Rat kidney

Section type: Formalin fixed & Paraffin -embedded section

Retrieval method: High temperature and high pressure

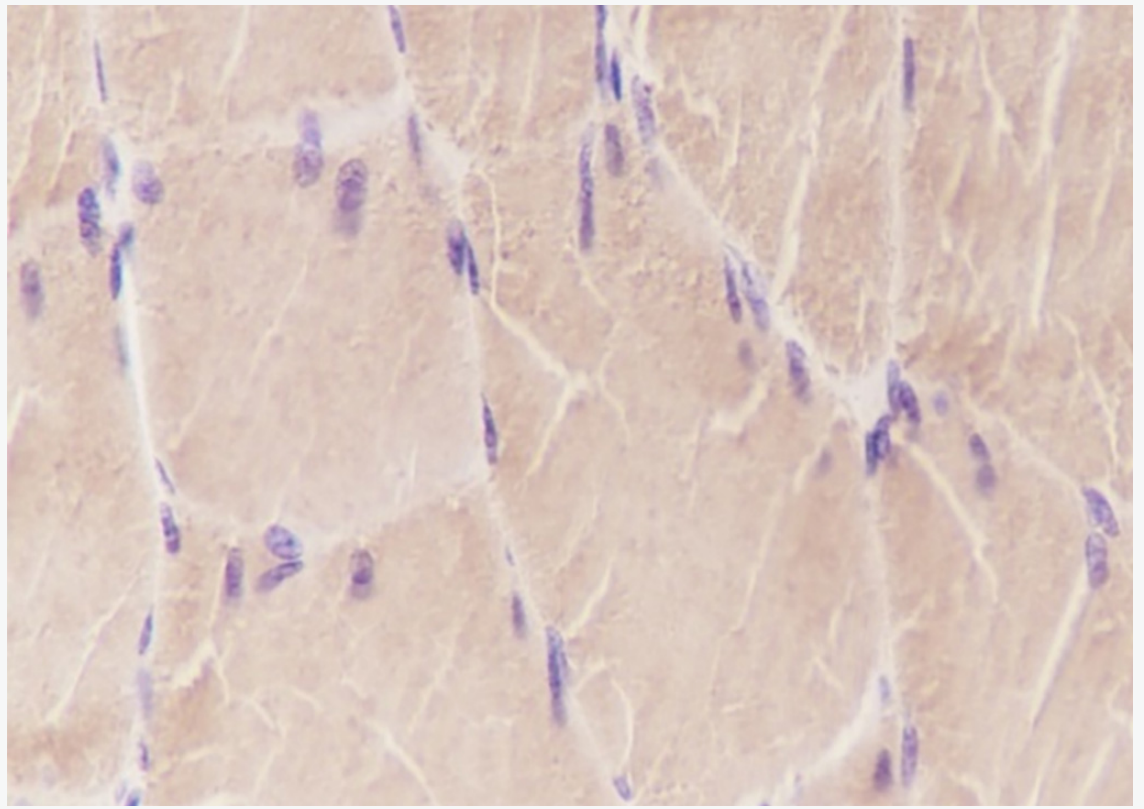
Retrieval buffer: Tris/EDTA buffer, pH 9.0 Primary ab dilution: 1:100

Primary ab incubation condition: 1 hour at room temperature

Secondary ab: SP Kit(Mouse)(sp-0024)

Counter stain: Hematoxylin (Blue)

Comment: Color brown is the positive signal for SLM-60482M



Cell line: HepG2

Fixative: 100% Ice-cold methanol

Permeabilization: 0.1% TritonX-100

Primary ab dilution: 1:50

Primary incubation condition: 4°C overnight

Secondary ab: Goat Anti-Rabbit IgG

Nuclear counter stain: DAPI (Blue)

Comment: Color green is the positive signal for SLM-60482M