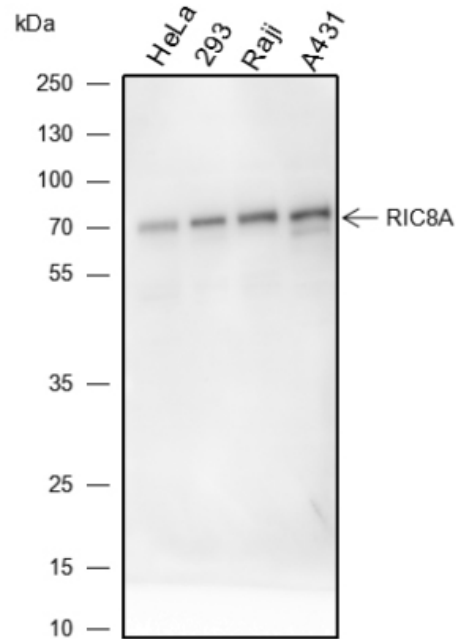


Mouse Anti-RIC8A antibody

SLM-60481M

Product Name	RIC8A
Chinese Name	
Immunogen Species	Mouse
Clonality	Monoclonal
Clone NO.	C8E2
React Species	Human
Applications	WB=1:500-1000 not yet tested in other applications. optimal dilutions/concentrations should be determined by the end user.
Cellular localization	cytoplasmic The cell membrane
Form	Liquid
Concentration	1mg/ml
Lsotype	IgG1/Kappa
Purification	Affinity purified by Protein G
Buffer Solution	1M TBS(pH7.4) with 1% BSA, 3% Proclin300 and 50% Glycerol.
Storage	Shipped at 4°C. Store at -20 °C for one year. Avoid repeated freeze/thaw cycles.
Attention	This product as supplied is intended for research use only, not for use in human, therapeutic or diagnostic applications.
PubMed	PubMed
Product Detail	鸟嘌呤核苷酸交换因子（GEF），它可以激活一些，但不是所有的 G- α 蛋白。能够激活 GNAI1、GNAO1 和 GNAQ，但不能通过将约束 GDP 交换为 GTP 来激活 GNAS。通过刺激 G（i）- α 蛋白参与染色体有丝分裂运动期间微管拉力的调节，可能导致从 NuMA-GPSM2-G（i）- α -GDP 复合物释放 G（i）- α GTP 和 NuMA 蛋白。通过增强 G（q）偶联受体介导的 ERK 激活，还作为 G（q）- α （GNAQ）蛋白的激活剂。

Product Picture



Blocking buffer: 5% NFDN/TBST

Primary ab dilution: 1:1000

Primary ab incubation condition: 2 hours at room temperature

Secondary ab: Goat Anti-Rabbit IgG H&L (HRP)

Lysate: HeLa, 293, Raji, A431

Protein loading quantity: 20 μ g

Exposure time: 3 s

Predicted MW: 65 kDa

Observed MW: 65 kDa