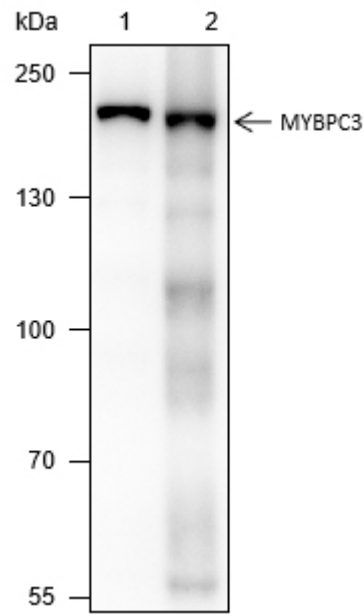


Mouse Anti-MYBPC3 antibody

SLM-60480M

Product Name	MYBPC3
Chinese Name	
Immunogen Species	Mouse
Clonality	Monoclonal
Clone NO.	A2A7
React Species	Mouse(predicted:Human,Rat) WB=1:500-1000,IHC-P=1:100-500,IHC-F=1:100-500,IF=1:100-500 (Paraffin sections need antigen repair)
Applications	not yet tested in other applications. optimal dilutions/concentrations should be determined by the end user.
Form	Liquid
Concentration	1mg/ml
Lsotype	IgG1/Kappa
Purification	Affinity purified by Protein G
Buffer Solution	1M TBS(pH7.4) with 1% BSA, 3% Proclin300 and 50% Glycerol.
Storage	Shipped at 4°C. Store at -20 °C for one year. Avoid repeated freeze/thaw cycles.
Attention	This product as supplied is intended for research use only, not for use in human, therapeutic or diagnostic applications.
PubMed	PubMed
Product Detail	粗纤维相关蛋白位于脊椎动物横纹肌横纹肌 a 带的交叉区。在体外，它结合 MHC、F-肌动蛋白和天然细丝，并修饰肌动蛋白激活的肌球蛋白 ATPase 的活性。它还可以调节肌肉收缩或可能发挥更结构性的作用。



Product Picture

Blocking buffer: 5% NFDN/TBST

Primary ab dilution: 1:1000

Primary ab incubation condition: 2 hours at room temperature

Secondary ab: Goat Anti-Rabbit IgG H&L (HRP)

Lysate: 1: Rat heart, 2: Mouse heart

Protein loading quantity: 20 μ g

Exposure time: 3 s

Predicted MW: 150 kDa

Observed MW: 150 kDa