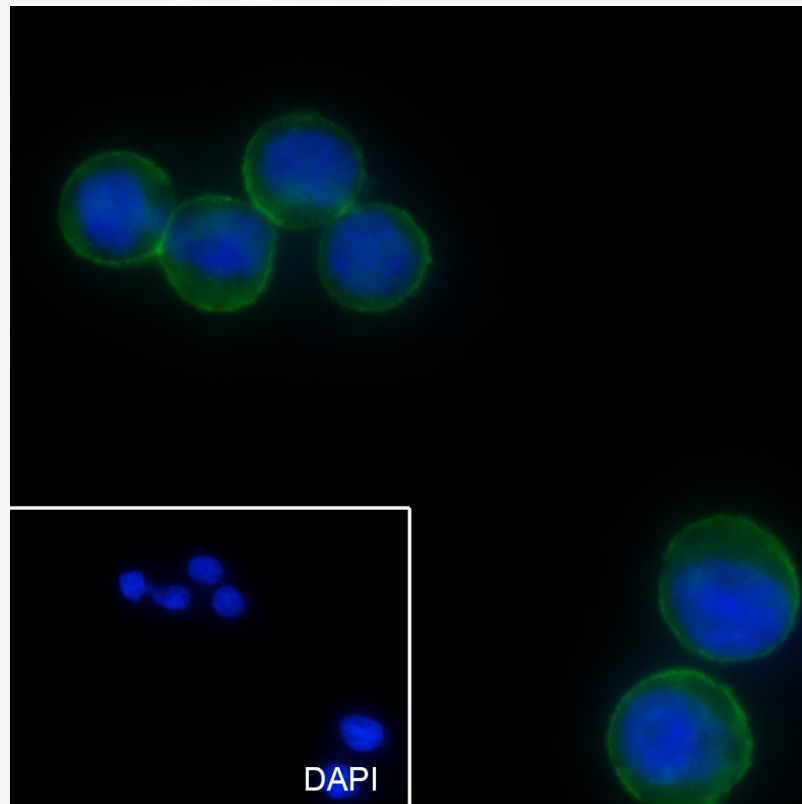


Mouse Anti-CD321 antibody

SLM-60476M

Product Name	CD321
Chinese Name	
Immunogen Species	Mouse
Clonality	Monoclonal
Clone NO.	F11B12
React Species	Human
Applications	ICC/IF=1:100-500,Flow-Cyt=1:50-100 not yet tested in other applications. optimal dilutions/concentrations should be determined by the end user.
Cellular localization	cytoplasmic
Form	Liquid
Concentration	1mg/ml
Lsotype	IgG1/Kappa
Purification	Affinity purified by Protein G
Buffer Solution	1M TBS(pH7.4) with 1% BSA, 3% Proclin300 and 50% Glycerol.
Storage	Shipped at 4°C. Store at -20 °C for one year. Avoid repeated freeze/thaw cycles.
Attention	This product as supplied is intended for research use only, not for use in human, therapeutic or diagnostic applications.
PubMed	PubMed
Product Detail	似乎在上皮紧密连接形成中起作用。早期出现在原始形式的细胞连接处并招募 PARD3, PARD6-PARD3 复合体的结合可能阻止 PARD3 与 JAM1 的相互作用, 从而防止紧密连接组装。在调节单核细胞迁移中起作用, 涉及上皮屏障的完整性。整合素 α -L/ β -2 配体参与记忆性 T 细胞和中性粒细胞迁移。参与血小板活化, 作为哺乳动物呼肠孤病毒 sigma-1 的受体, 作为人类轮状病毒 Wa 株的受体。

Product Picture



Cell line: HT-29

Fixative: 4% Paraformaldehyde

Permeabilization: 0.1% Triton X-100

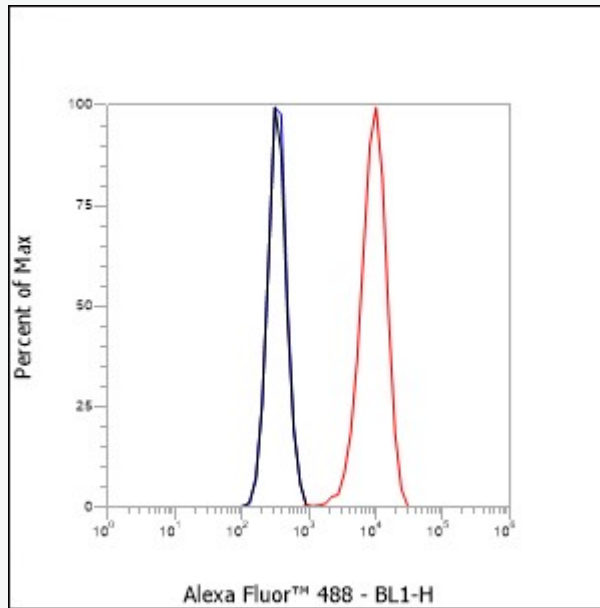
Primary Ab dilution: 1:50

Primary incubation condition: 4°C overnight

Secondary Ab: Goat Anti-Mouse IgG

Nuclear counter stain: DAPI (Blue)

Comment: Color green is the positive signal for SLM-60476M



Cell line: HT-29

Fixative: Unfixed

Permeabilization: None

Primary Ab dilution: 1:100

Secondary Ab: Goat anti Mouse IgG

Unlabelled control: The cell without incubation with primary antibody and secondary antibody (Black line).

Isotype control: Mouse monoclonal IgG1 (Blue line).

Comment: Line red is the positive signal for SLM-60476M