

Rabbit Anti-Eef1g antibody

SLM-60474R

Product Name Eef1g

Chinese Name

Immunogen Species Rabbit

Clonality Monoclonal

Clone NO. E7B10

React Species Human,Mouse,Rat

WB=1:500-2000,IHC-P=1:100-500,IHC-F=1:100-500,IF=1:100-500,Flow-Cyt=1:50-100,ICC/IF
(Paraffin sections need antigen repair)

Applications

not yet tested in other applications.

optimal dilutions/concentrations should be determined by the end user.

Cellular localization

The nucleus cytoplasmic The cell membrane Extracellular matrix

Form Liquid

Concentration 1mg/ml

Lsotype IgG/Kappa

Purification Affinity purified by Protein A

Buffer

Solution

1M TBS(pH7.4) with 1% BSA, 3% Proclin300 and 50% Glycerol.

Storage

Shipped at 4°C. Store at -20 °C for one year. Avoid repeated freeze/thaw cycles.

Attention

This product as supplied is intended for research use only, not for use in human, therapeutic or diagnostic applications.

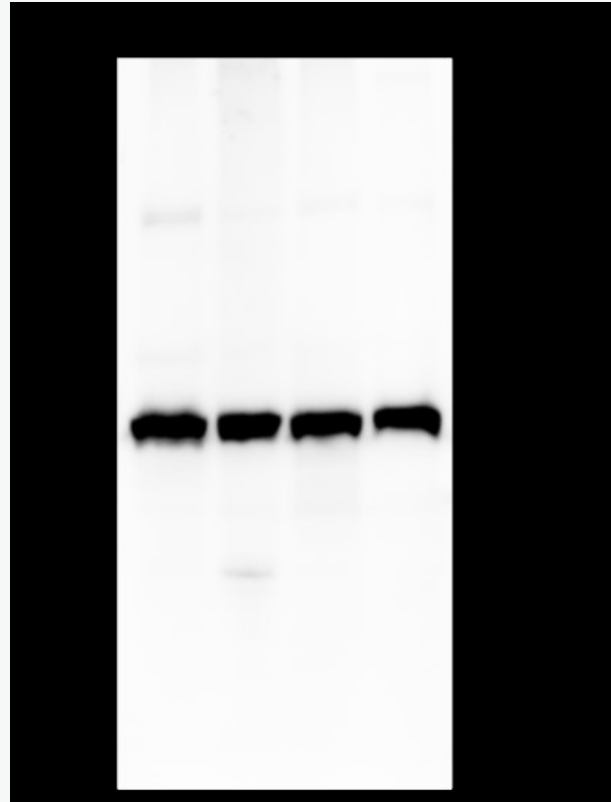
PubMed

[PubMed](#)

Product Detail

可能在将复合物锚定到其他细胞成分上起作用。

**Product
Picture**



Blocking buffer: 5% NFDm/TBST

Primary ab dilution: 1:5000

Primary ab incubation condition: 2 hours at room temperature

Secondary ab: Goat Anti-Rabbit IgG H&L (HRP)

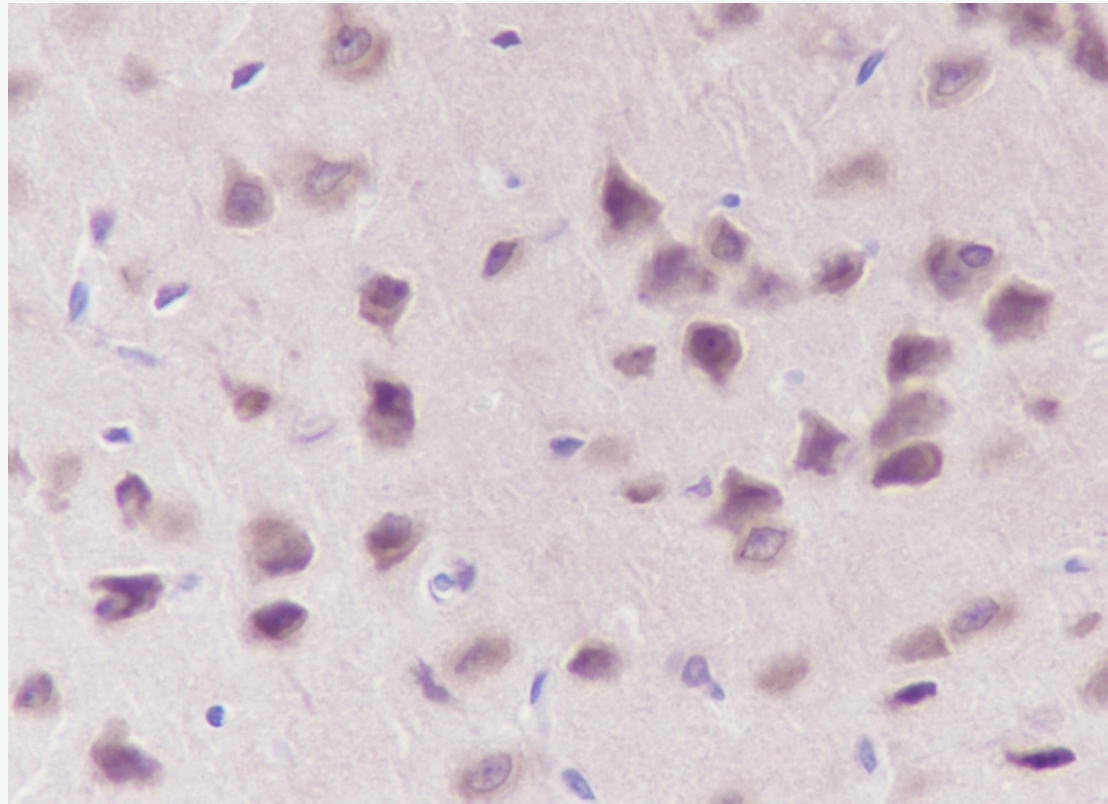
Lysate:1: HT-29, 2: F9, 3: Panc-1, 4: C6

Protein loading quantity: 20 μ g

Exposure time: 30 s

Predicted MW: 50 kDa

Observed MW: 50 kDa



Tissue: Mouse brain

Section type: Formalin fixed & Paraffin -embedded section

Retrieval method: High temperature and high pressure

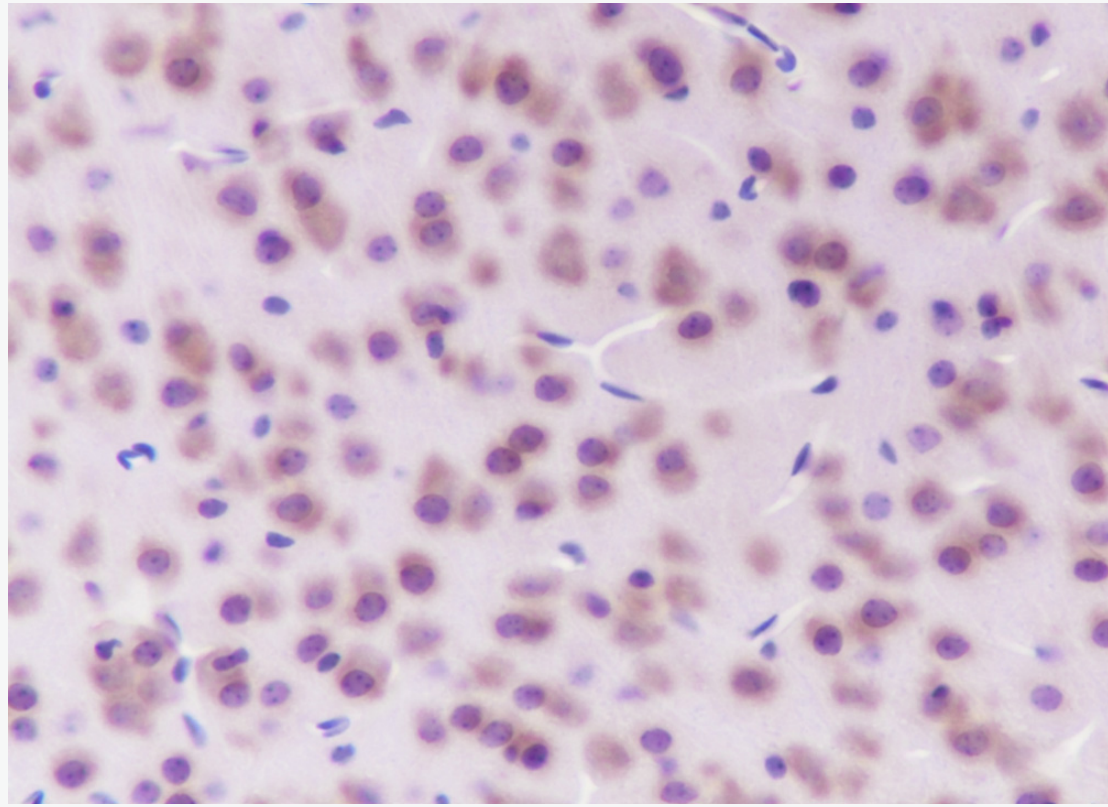
Retrieval buffer: Tris/EDTA buffer, pH 9.0 Primary ab dilution: 1:100

Primary ab incubation condition: 1 hour at room temperature

Secondary ab: SP Kit(Rabbit) (sp-0023)

Counter stain: Hematoxylin (Blue)

Comment: Color brown is the positive signal for SLM-60474R



Tissue: Mouse brain

Section type: Formalin fixed & Paraffin -embedded section

Retrieval method: High temperature and high pressure

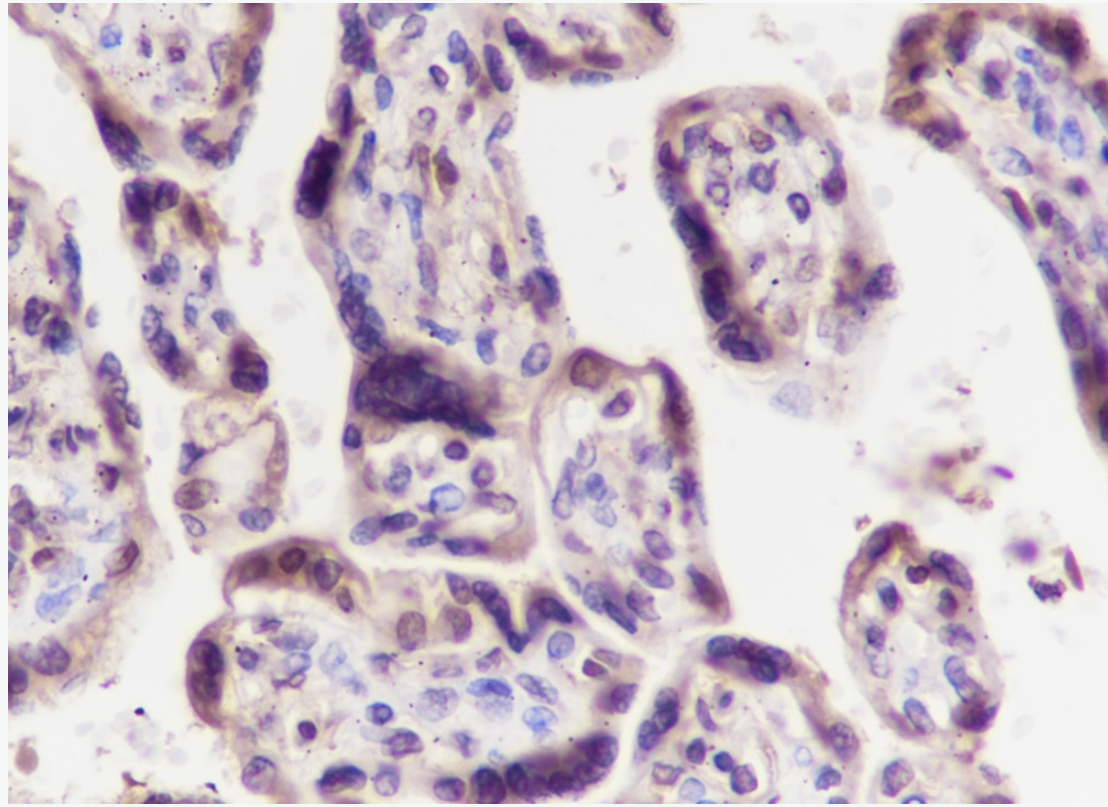
Retrieval buffer: Tris/EDTA buffer, pH 9.0 Primary ab dilution: 1:100

Primary ab incubation condition: 1 hour at room temperature

Secondary ab: SP Kit(Rabbit) (sp-0023)

Counter stain: Hematoxylin (Blue)

Comment: Color brown is the positive signal for SLM-60474R



Tissue: Human placenta

Section type: Formalin fixed & Paraffin -embedded section

Retrieval method: High temperature and high pressure

Retrieval buffer: Tris/EDTA buffer, pH 9.0 Primary ab dilution: 1:100

Primary ab incubation condition: 1 hour at room temperature

Secondary ab:SP Kit(Rabbit) (sp-0023)

Counter stain: Hematoxylin (Blue)

Comment: Color brown is the positive signal for SLM-60474R