

Rabbit Anti-BAP31 antibody

SLM-60472R

Product Name BAP31

Chinese Name

Immunogen Species Rabbit

Clonality Monoclonal

Clone NO. D10C11

React Species Human,Mouse

Applications WB=1:500-2000,IHC-P=1:100-500,IHC-F=1:100-500,ICC/IF=1:50-200,IF=1:100-500,Flow-Cy
(Paraffin sections need antigen repair)
not yet tested in other applications.
optimal dilutions/concentrations should be determined by the end user.

Cellular localization cytoplasmic The cell membrane

Form Liquid

Concentration 1mg/ml

Lsotype IgG/Kappa

Purification Affinity purified by Protein A

Buffer Solution 1M TBS(pH7.4) with 1% BSA, 3% Proclin300 and 50% Glycerol.

Storage Shipped at 4°C. Store at -20 °C for one year. Avoid repeated freeze/thaw cycles.

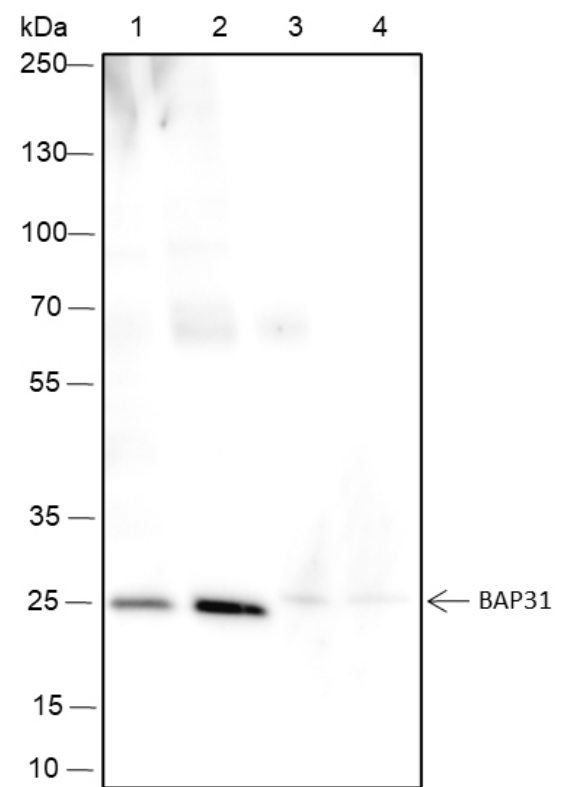
Attention This product as supplied is intended for research use only, not for use in human, therapeutic or diagnostic applications.

PubMed [PubMed](#)

Product Detail

作为伴侣蛋白发挥作用，是最丰富的内质网蛋白之一。在内质网分泌蛋白的输出、异常识别及其对内质网相关降解（ERAD）的靶向性中发挥作用。也作为 Transmembrane protein 货物受体，可能参与 CASP8 介导的 Apoptosis。

**Product
Picture**



Blocking buffer: 5% NFDm/TBST

Primary ab dilution: 1:1000

Primary ab incubation condition: 2 hours at room temperature

Secondary ab: Goat Anti-Rabbit IgG H&L (HRP)

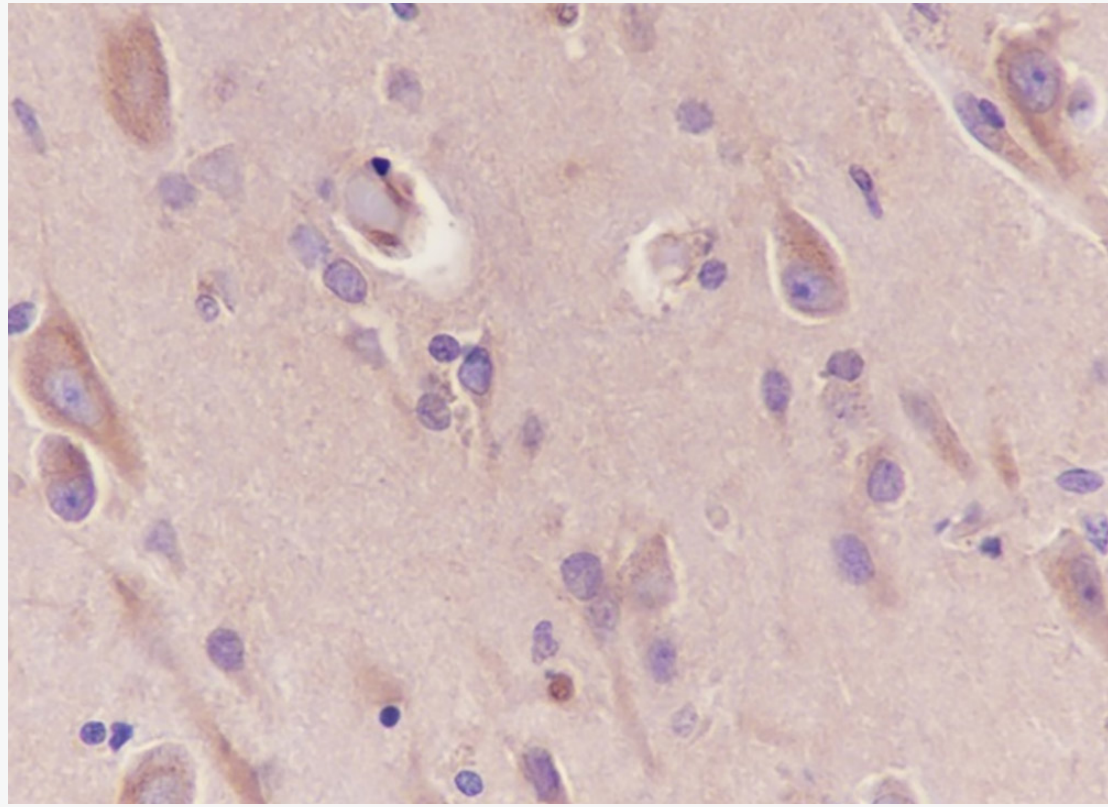
Lysate: 1: HeLa, 2: 293, 3: 4T1, 4: Rat liver

Protein loading quantity: 20 μ g

Exposure time: 60 s

Predicted MW: 28 kDa

Observed MW: 28 kDa



Tissue: Human brain

Section type: Formalin fixed & Paraffin -embedded section

Retrieval method: High temperature and high pressure

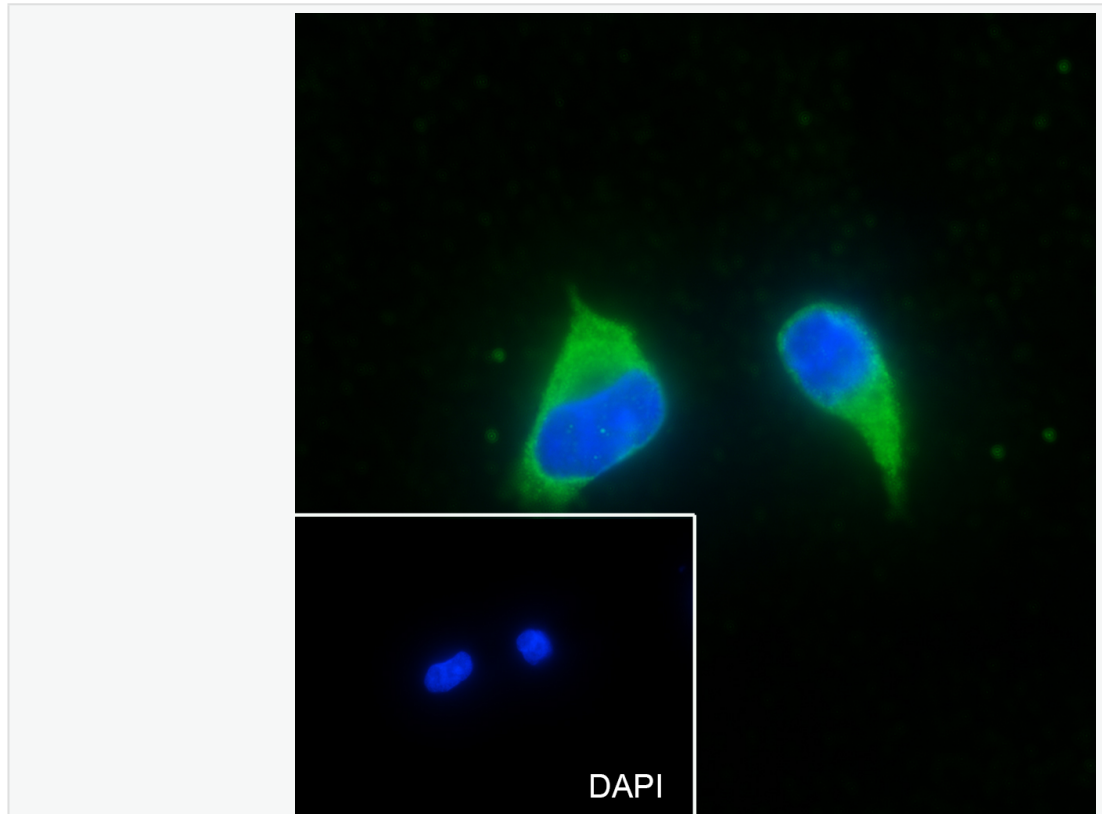
Retrieval buffer: Tris/EDTA buffer, pH 9.0 Primary ab dilution: 100

Primary ab incubation condition: 1 hour at room temperature

Secondary ab: SP Kit(Rabbit) (sp-0023)

Counter stain: Hematoxylin (Blue)

Comment: Color brown is the positive signal for SLM-60472R



Cell line: U-2 OS

Fixative: 100% Ice-cold methanol

Permeabilization: 0.1% TritonX-100

Primary ab dilution: 1:50

Primary incubation condition: 4°C overnight

Secondary ab: Goat Anti-Rabbit IgG

Nuclear counter stain: DAPI (Blue)

Comment: Color green is the positive signal for SLM-60472R