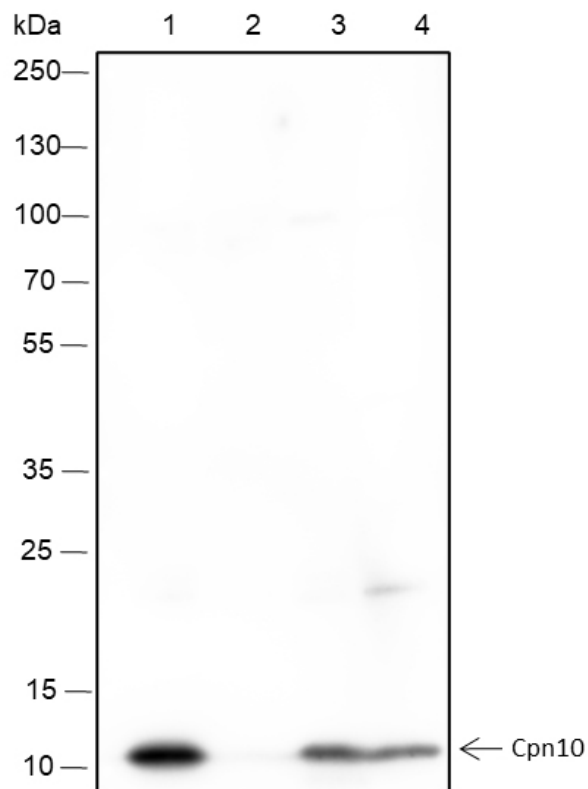


Rabbit Anti-Cpn10 antibody

SLM-60471R

Product Name	Cpn10
Chinese Name	
Immunogen Species	Rabbit
Clonality	Monoclonal
Clone NO.	F10C9
React Species	Human,Mouse,Rat
Applications	WB=1:500-2000,IHC-P=1:100-500,IHC-F=1:100-500,ICC/IF=1:50-200,IF=1:100-500 (Paraffin sections need antigen repair) not yet tested in other applications. optimal dilutions/concentrations should be determined by the end user.
Cellular localization	The cell membrane
Form	Liquid
Concentration	1mg/ml
Isotype	IgG/Kappa
Purification	Affinity purified by Protein G
Buffer Solution	1M TBS(pH7.4) with 1% BSA, 3% Proclin300 and 50% Glycerol.
Storage	Shipped at 4°C. Store at -20 °C for one year. Avoid repeated freeze/thaw cycles.
Attention	This product as supplied is intended for research use only, not for use in human, therapeutic or diagnostic applications.
PubMed	PubMed
Product Detail	共伴侣蛋白参与 Mitochondrion 蛋白质导入和大分子组装。与热休克蛋白 60 一起，有助于进口蛋白质的正确折叠。还可以防止错误折叠，促进 Mitochondrion 基质中在应激条件下产生的未折叠多肽的重新折叠和正确组装。这些伴侣蛋白的功能单元由 Hsp60 大亚基的七聚体环组成，其功能类似于背对背的双环。在一个循环反应中，Hsp60 环复合物与每个环上一个未折叠的底物蛋白结合，随后与 ATP 结合，并与辅伴侣蛋白 Hsp10 的两个七聚体环结合。这导致基质蛋白在 Hsp60 内腔隔离，在一定时间内，它可以折叠而不受其他细胞成分的干扰。所有 Hsp60 亚基中 ATP 的同步水解导致伴侣环的解离和 ADP 和折叠底物蛋白的释放。

**Product
Picture**



Blocking buffer: 5% NFDN/TBST

Primary ab dilution: 1:1000

Primary ab incubation condition: 2 hours at room temperature

Secondary ab: Goat Anti-Rabbit IgG H&L (HRP)

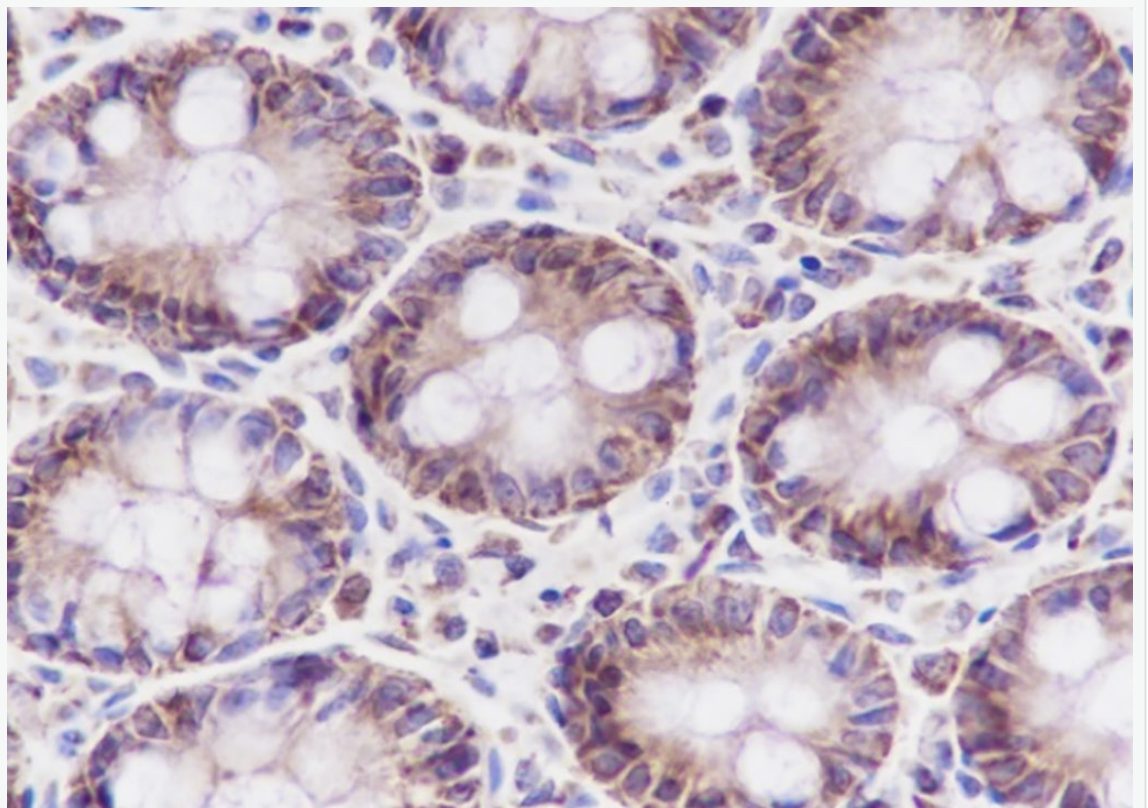
Lysate:1: MCF-7, 2: 293, 3: 4T1, 4: PC-12

Protein loading quantity: 20 μ g

Exposure time: 60 s

Predicted MW: 11 kDa

Observed MW: 11 kDa



Tissue: Human colon

Section type: Formalin fixed & Paraffin -embedded section

Retrieval method: High temperature and high pressure

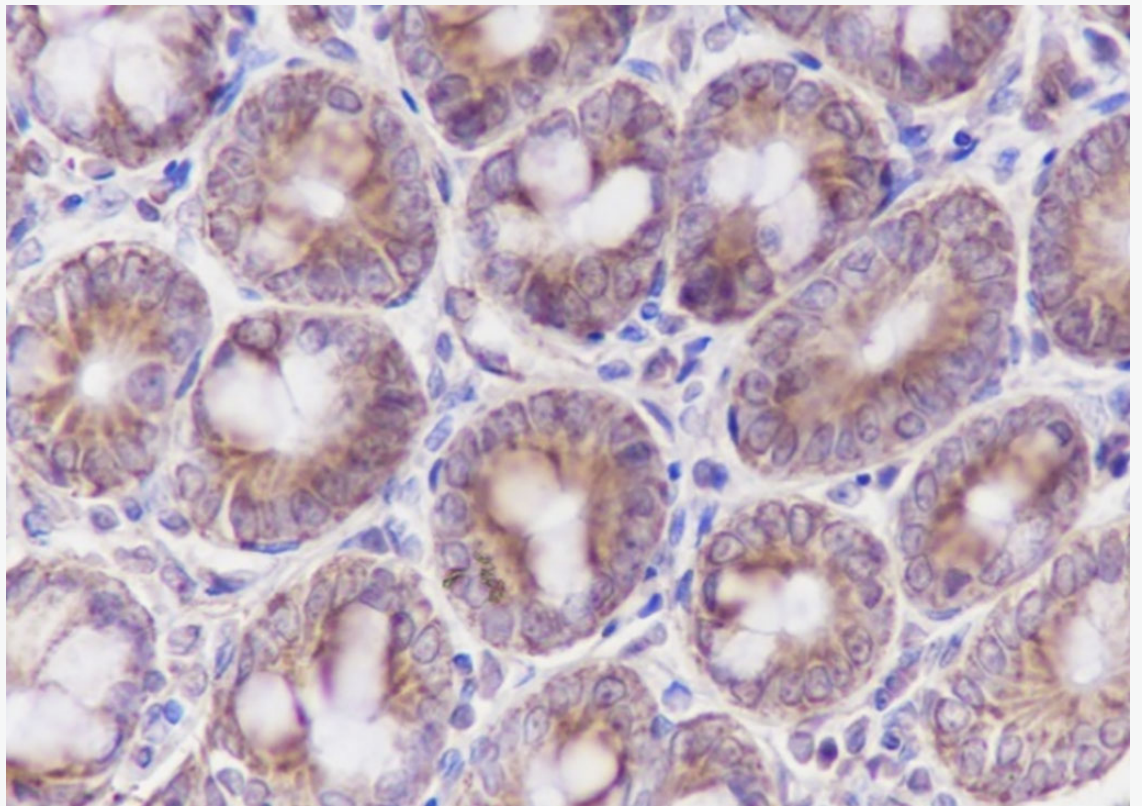
Retrieval buffer: Tris/EDTA buffer, pH 9.0 Primary ab dilution: 1:100

Primary ab incubation condition: 1 hour at room temperature

Secondary ab: SP Kit(Rabbit) (sp-0023)

Counter stain: Hematoxylin (Blue)

Comment: Color brown is the positive signal for SLM-60471R



Tissue: Rat colon

Section type: Formalin fixed & Paraffin -embedded section

Retrieval method: High temperature and high pressure

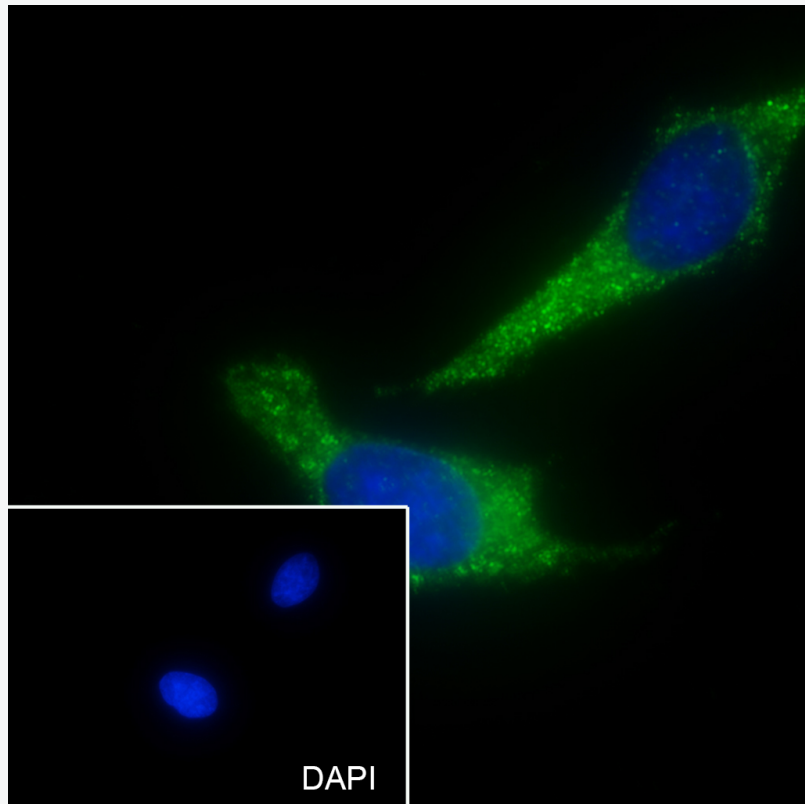
Retrieval buffer: Tris/EDTA buffer, pH 9.0 Primary ab dilution: 1:100

Primary ab incubation condition: 1 hour at room temperature

Secondary ab: SP Kit(Rabbit) (sp-0023)

Counter stain: Hematoxylin (Blue)

Comment: Color brown is the positive signal for SLM-60471R



Cell line: HeLa

Fixative: 100% Ice-cold methanol

Permeabilization: 0.1% TritonX-100

Primary ab dilution: 1:50

Primary incubation condition: 4°C overnight

Secondary ab: Goat Anti-Rabbit IgG

Nuclear counter stain: DAPI (Blue)

Comment: Color green is the positive signal for SLM-60471R