

## Mouse Anti-Calumenin antibody

SLM-60468M

<b>Product Name</b>	Calumenin
<b>Chinese Name</b>	钙腔蛋白单克隆抗体
<b>Alias</b>	CALU_HUMAN; Calumenin; Crocalbin; crocalbin-like protein; multiple EF-hand protein; IEF SSP 9302.
<b>Immunogen Species</b>	Mouse
<b>Clonality</b>	Monoclonal
<b>Clone NO.</b>	F7B9
<b>React Species</b>	Human(predicted:Rat) WB=1:1000-5000,ICC/IF=1:100-500
<b>Applications</b>	not yet tested in other applications. optimal dilutions/concentrations should be determined by the end user.
<b>Cellular localization</b>	cytoplasmic The cell membrane Secretory protein
<b>Form</b>	Liquid
<b>Concentration</b>	1mg/ml
<b>Lsotype</b>	IgG1/Kappa
<b>Purification</b>	Affinity purified by Protein G
<b>Buffer Solution</b>	1M TBS(pH7.4) with 1% BSA, 3% Proclin300 and 50% Glycerol.
<b>Storage</b>	Shipped at 4°C. Store at -20 °C for one year. Avoid repeated freeze/thaw cycles.
<b>Attention</b>	This product as supplied is intended for research use only, not for use in human, therapeutic or diagnostic applications.
<b>PubMed</b>	<a href="#">PubMed</a> The product of this gene is a calcium-binding protein localized in the endoplasmic reticulum (ER) and it is involved in such ER functions as protein folding and sorting. This protein belongs to a family of multiple EF-hand proteins (CERC) that include reticulocalbin, ERC-55, and Cab45 and the product of this gene. Alternatively spliced transcript variants encoding different isoforms have been identified. [provided by RefSeq, Oct 2008]
<b>Product Detail</b>	

### Subcellular Location:

Endoplasmic reticulum lumen. Secreted. Melanosome. Sarcoplasmic

reticulum lumen. Identified by mass spectrometry in melanosome fractions from stage I to stage IV.

**Tissue Specificity:**

Ubiquitously expressed. Expressed at high levels in heart, placenta and skeletal muscle, at lower levels in lung, kidney and pancreas and at very low levels in brain and liver.

**SWISS:**

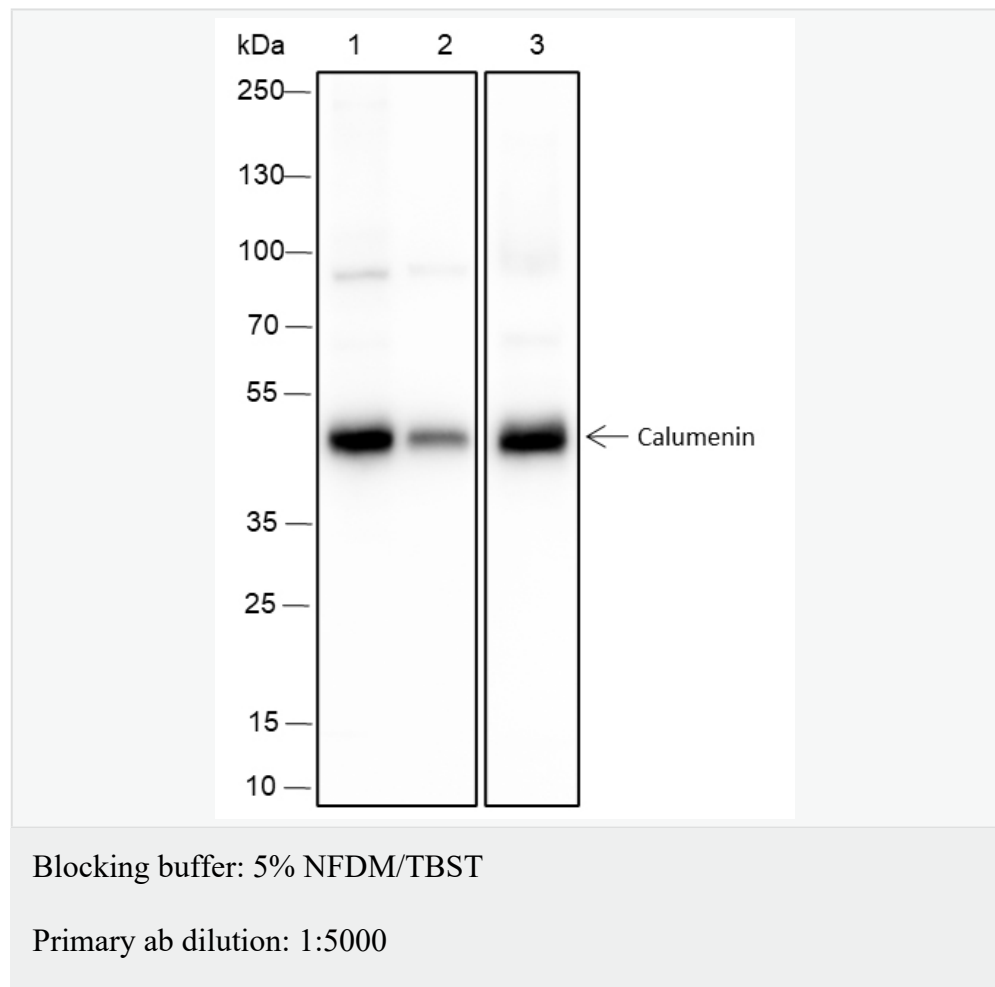
O43852

**Gene ID:**

813

参与多种 N-末端谷氨酸残基的维生素 K 依赖性羧化的调节。可能抑制  $\gamma$  羧化酶 GGCX，以低亲和力结合 7 个钙离子。

**Product Picture**



Primary ab incubation condition: room temperature 2h

Secondary ab: Goat Anti-Mouse IgG H&L (HRP)

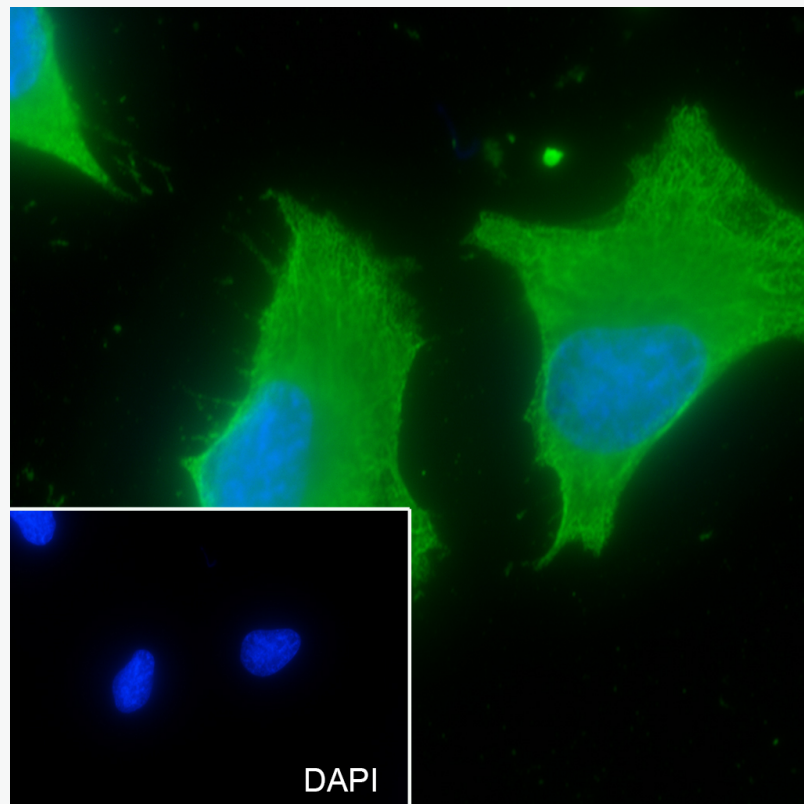
Lysate:1: HeLa, 2: 293, 3: BRL

Protein loading quantity: 20  $\mu$ g

Exposure time: 3 s

Predicted MW: 37 kDa

Observed MW: 47 kDa



Cell line: HeLa

Fixative: 100% Ice-cold methanol



Permeabilization: 0.1% TritonX-100

Primary ab dilution: 1:50

Primary incubation condition: 4°C overnight

Secondary ab: Goat Anti-Rabbit IgG

Nuclear counter stain: DAPI (Blue)

Comment: Color green is the positive signal for SLM-60468M