

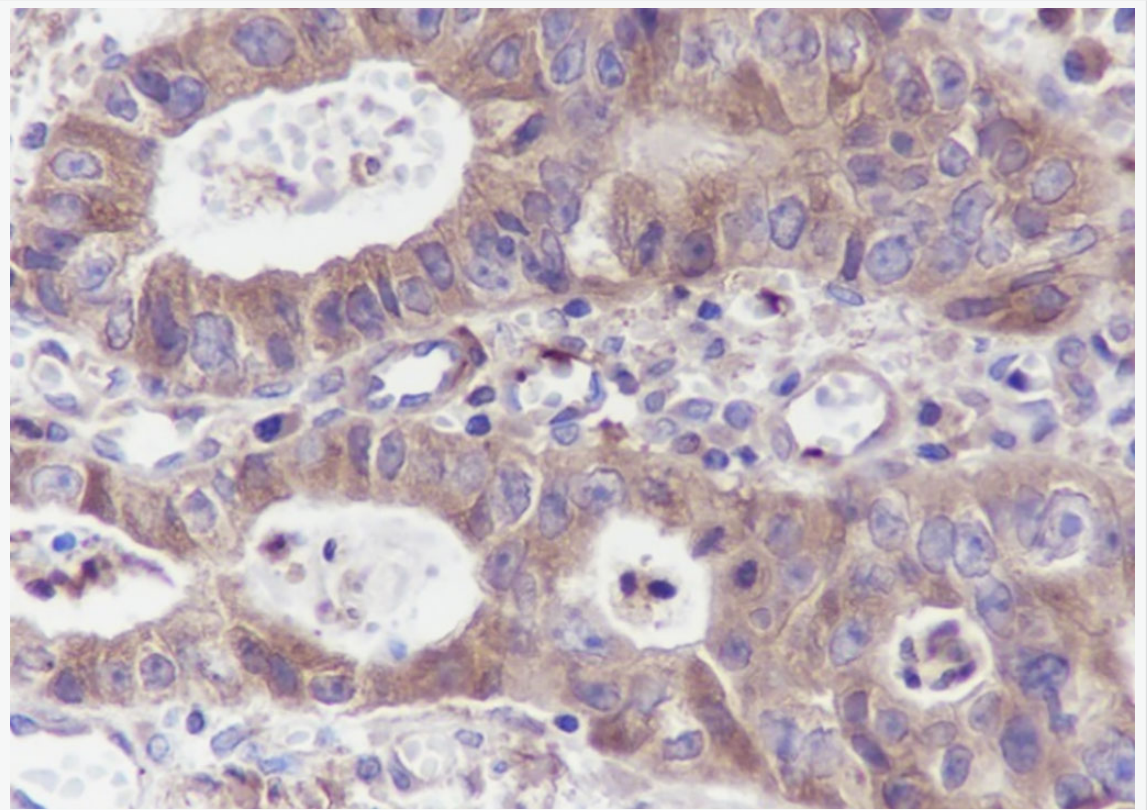


## Mouse Anti-PLEK antibody

SLM-60467M

<b>Product Name</b>	PLEK
<b>Chinese Name</b>	
<b>Immunogen Species</b>	Mouse
<b>Clonality</b>	Monoclonal
<b>Clone NO.</b>	D3G11
<b>React Species</b>	Human
<b>Applications</b>	WB=1:1000-5000,IHC-P=1:100-500,IHC-F=1:100-500,ICC/IF=1:100-500,IF=1:100-500 (Paraffin sections need antigen repair) not yet tested in other applications. optimal dilutions/concentrations should be determined by the end user.
<b>Cellular localization</b>	cytoplasmic The cell membrane Extracellular matrix Secretory protein
<b>Form</b>	Liquid
<b>Concentration</b>	1mg/ml
<b>Lsotype</b>	IgG1/Kappa
<b>Purification</b>	Affinity purified by Protein G
<b>Buffer Solution</b>	1M TBS(pH7.4) with 1% BSA, 3% Proclin300 and 50% Glycerol.
<b>Storage</b>	Shipped at 4°C. Store at -20 °C for one year. Avoid repeated freeze/thaw cycles.
<b>Attention</b>	This product as supplied is intended for research use only, not for use in human, therapeutic or diagnostic applications.
<b>PubMed</b>	<a href="#">PubMed</a>
<b>Product Detail</b>	血小板主要蛋白激酶 C 底物。

**Product  
Picture**



Tissue: Human colon cancer

Section type: Formalin fixed & Paraffin -embedded section

Retrieval method: High temperature and high pressure

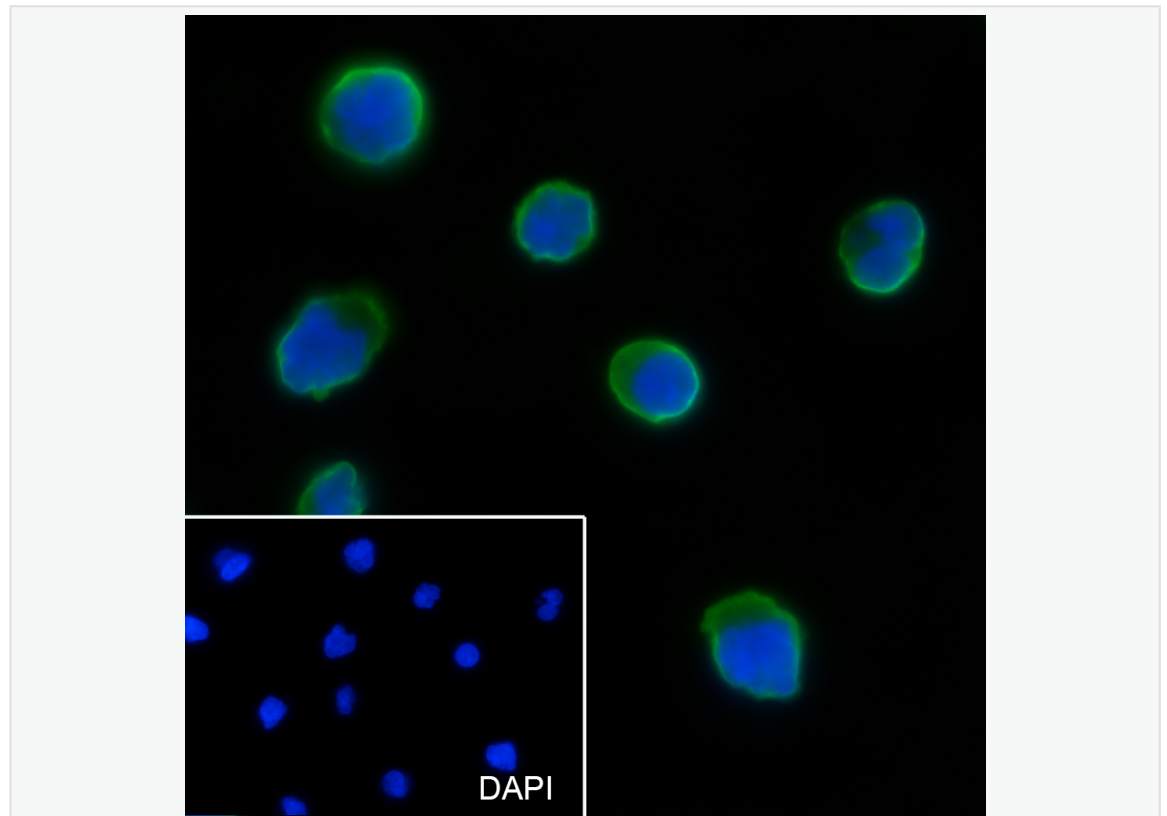
Retrieval buffer: Tris/EDTA buffer, pH 9.0 Primary ab dilution: 1:100

Primary ab incubation condition: 1 hour at room temperature

Secondary ab: SP Kit(Mouse)(sp-0024)

Counter stain: Hematoxylin (Blue)

Comment: Color brown is the positive signal for SLM-60467M



Cell line: Raji

Fixative: 4% Paraformaldehyde/

Permeabilization: 0.1% TritonX-100

Primary ab dilution: 1:50

Primary incubation condition: 4°C overnight

Secondary ab: Goat Anti-Rabbit IgG

Nuclear counter stain: DAPI (Blue)

Comment: Color green is the positive signal for SLM-60467M