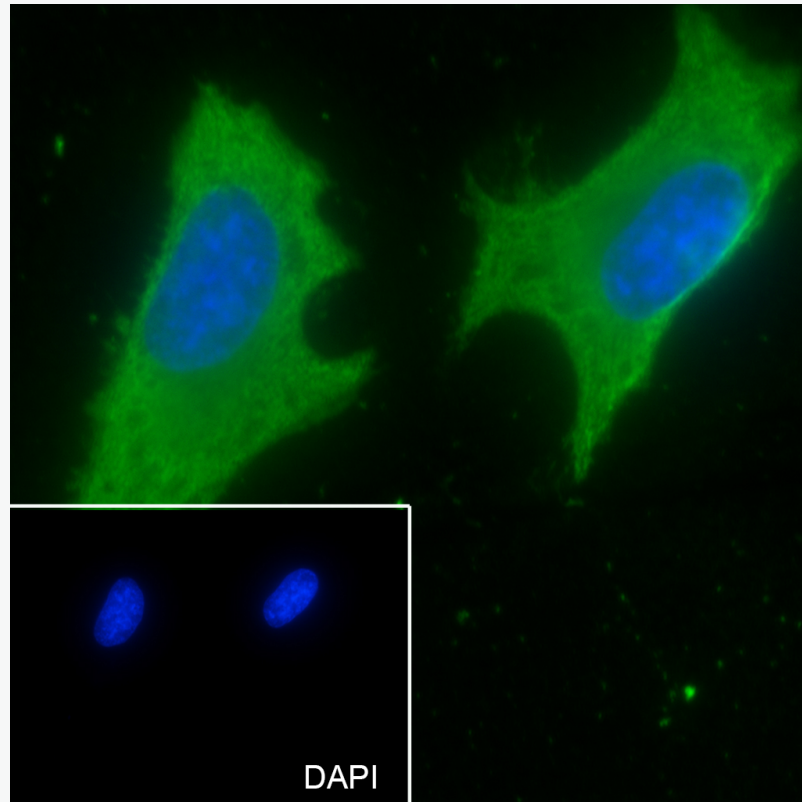


Mouse Anti-G3BP1 antibody

SLM-60465M

Product Name	G3BP1
Chinese Name	
Immunogen Species	Mouse
Clonality	Monoclonal
Clone NO.	H9B1
React Species	Human
Applications	WB=1:500-2000,ICC/IF=1:50-200,Flow-Cyt=1:50-100 not yet tested in other applications. optimal dilutions/concentrations should be determined by the end user.
Cellular localization	The nucleus The cell membrane
Form	Liquid
Concentration	1mg/ml
Lsotype	IgG1/Kappa
Purification	Affinity purified by Protein G
Buffer Solution	1M TBS(pH7.4) with 1% BSA, 3% Proclin300 and 50% Glycerol.
Storage	Shipped at 4°C. Store at -20 °C for one year. Avoid repeated freeze/thaw cycles.
Attention	This product as supplied is intended for research use only, not for use in human, therapeutic or diagnostic applications.
PubMed	PubMed
Product Detail	在先天免疫中起重要作用的 ATP 和镁依赖性解旋酶。通过促进 cGAS 的 DNA 结合和激活,参与 DNA 触发的 cGAS/STING 通路。可能通过帮助 DDX58 检测致病性 RNA 来增强 DDX58 诱导的 I 型 Interferon 的产生。此外,在应力颗粒的形成中起着至关重要的作用。优先展开部分 DNA 和 RNA 双链体,其退火部分为 17bp,在 5'-和 3'-端有一个悬挂的 3'尾或悬挂的尾。以相当的效率解开 DNA/DNA、RNA/DNA 和 RNA/RNA 底物。通过沿着结合的单链 DNA 在 5'到 3'方向上移动而单向作用。体外磷酸化依赖序列特异性内啡肽酶。仅在胞嘧啶和腺嘌呤之间切割,优先在 3'-UTR 处切割 MYC mRNA。

Product Picture



Cell line: HeLa

Fixative: 100% Ice-cold methanol

Permeabilization: 0.1% TritonX-100

Primary Ab dilution: 1:50

Primary incubation condition: 4°C overnight

Secondary Ab: Goat Anti-Rabbit IgG

Nuclear counter stain: DAPI (Blue)

Comment: Color green is the positive signal for SLM-60465M