

Mouse Anti-MTHFD1 antibody

SLM-60464M

Product Name	MTHFD1
Chinese Name	亚甲基四氢叶酸脱氢酶单克隆抗体
Alias	C1TC_HUMAN; C-1-tetrahydrofolate synthase, cytoplasmic; MTHFC; MTHFD; C1-THF synthase; Epididymis secretory sperm binding protein; C-1-tetrahydrofolate synthase, cytoplasmic, N-terminally processed; Methylenetetrahydrofolate dehydrogenase; methylenetetrahydrofolate dehydrogenase, cyclohydrolase and formyltetrahydrofolate synthetase 1; CIMAH;
Research Area	Tumour Cell biology Signal transduction The new supersedes the old
Immunogen Species	Mouse
Clonality	Monoclonal
Clone NO.	F9D9
React Species	Human(predicted:Mouse) WB=1:500-1000,ICC/IF=1:100-500
Applications	not yet tested in other applications. optimal dilutions/concentrations should be determined by the end user.
Theoretical molecular weight	110kDa
Cellular localization	cytoplasmic
Form	Liquid
Concentration	1mg/ml
Lsotype	IgG1/Kappa
Purification	Affinity purified by Protein G
Buffer Solution	PBS, Glycerol, BSA
Storage	Shipped at 4°C. Store at -20 °C for one year. Avoid repeated freeze/thaw cycles.
Attention	This product as supplied is intended for research use only, not for use in human, therapeutic or diagnostic applications.
PubMed	PubMed

This gene encodes a protein that possesses three distinct enzymatic activities, 5,10-methylenetetrahydrofolate dehydrogenase, 5,10-methenyltetrahydrofolate cyclohydrolase and 10-formyltetrahydrofolate synthetase. Each of these activities catalyzes one of three sequential reactions in the interconversion of 1-carbon derivatives of tetrahydrofolate, which are substrates for methionine, thymidylate, and de novo purine syntheses. The trifunctional enzymatic activities are conferred by two major domains, an aminoterminal portion containing the dehydrogenase and cyclohydrolase activities and a larger synthetase domain. [provided by RefSeq, Jul 2008]

Subcellular Location:

Cytoplasm.

Tissue Specificity:

Ubiquitous.

SWISS:

P11586

Product Detail

Gene ID:

4522

Database links:

[Entrez Gene: 4522](#) Human

[Entrez Gene: 108156](#) Mouse

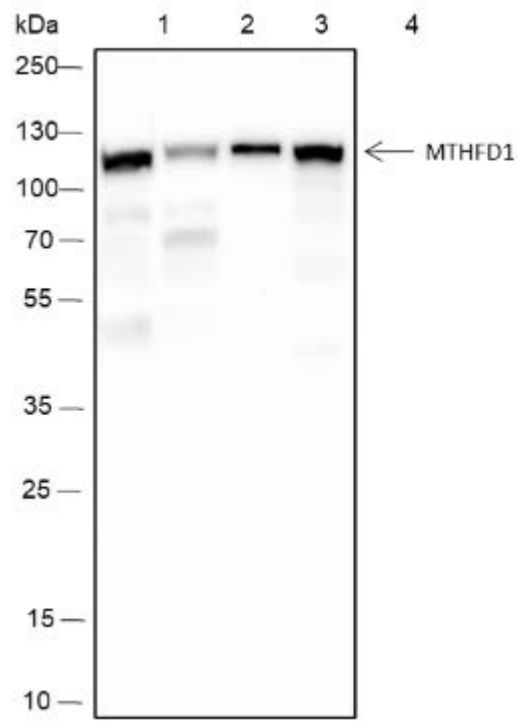
[Entrez Gene: 64300](#) Rat

[Omim: 172460](#) Human

[SwissProt: P11586](#) Human

[SwissProt: Q922D8](#) Mouse

[SwissProt: P27653](#) Rat



Product Picture

Blocking buffer: 5% NFDM/TBST

Primary Ab dilution: 1:1000

Primary Ab incubation condition: room temperature 2h

Secondary Ab: Goat Anti-Mouse IgG H&L (HRP)

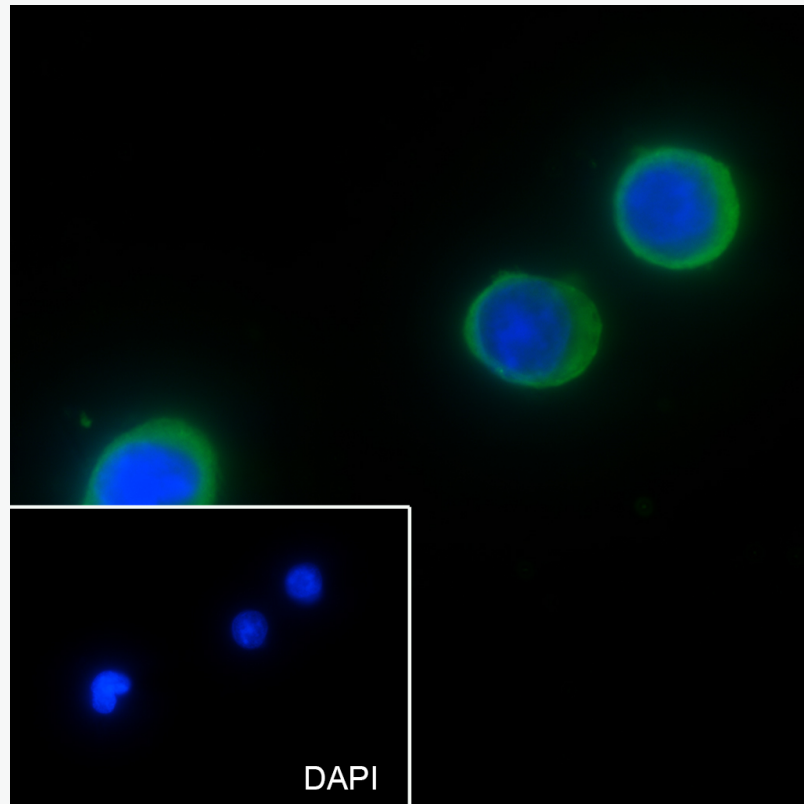
Lysate: 1: HeLa, 2: 293, 3: A20, 4: Raw264.7

Protein loading quantity: 20 μ g

Exposure time: 10 s

Predicted MW: 102 kDa

Observed MW: 102 kDa



Cell line: HEK-293

Fixative: 100% Ice-cold methanol

Permeabilization: 0.1% TritonX-100

Primary Ab dilution: 1:50

Primary incubation condition: 4°C overnight

Secondary Ab: Goat Anti-Rabbit IgG

Nuclear counter stain: DAPI (Blue)

Comment: Color green is the positive signal for SLM-60464M