

## Mouse Anti-TOMM40 antibody

SLM-60463M

**Product Name** TOMM40

**Chinese Name** TOMM40 单克隆抗体

**Alias** TOM40\_HUMAN; Mitochondrial import receptor subunit TOM40 homolog; C19orf1; PEREC1; TOM40; PEREC1; PER-EC1; D19S1177E; Protein Haymaker; Translocase of outer membrane 40 kDa subunit homolog; p38.5;

**Immunogen Species** Mouse

**Clonality** Monoclonal

**Clone NO.** E4B11

**React Species** Human,Rat(predicted:Mouse)

WB=1:500-2000,IHC-P=1:50-200,IHC-F=1:50-200,ICC/IF=1:50-200,IF=1:50-200

**Applications** (Paraffin sections need antigen repair)  
not yet tested in other applications.  
optimal dilutions/concentrations should be determined by the end user.

**Theoretical molecular weight** 37kDa

**Cellular localization** cytoplasmic The cell membrane

**Form** Liquid

**Concentration** 1mg/ml

**Lsotype** IgG1/lamda

**Purification** Affinity purified by Protein G

**Buffer Solution** 1M TBS(pH7.4) with 1% BSA, 3% Proclin300 and 50% Glycerol.

**Storage** Shipped at 4°C. Store at -20 °C for one year. Avoid repeated freeze/thaw cycles.

**Attention** This product as supplied is intended for research use only, not for use in human, therapeutic or diagnostic applications.

**PubMed** [PubMed](#)

**Product Detail** The protein encoded by this gene is localized in the outer membrane of the mitochondria. It is the channel-forming subunit of the translocase of the mitochondrial outer membrane (TOM) complex that is essential for import of protein precursors into mitochondria. Alternatively spliced transcript

variants have been found for this gene. [provided by RefSeq, Aug 2015]

**Subcellular Location:**

Mitochondrion outer membrane.

**SWISS:**

O96008

**Gene ID:**

10452

**Database links:**

[Entrez Gene: 10452](#) Human

[Entrez Gene: 53333](#) Mouse

[Entrez Gene: 308416](#) Rat

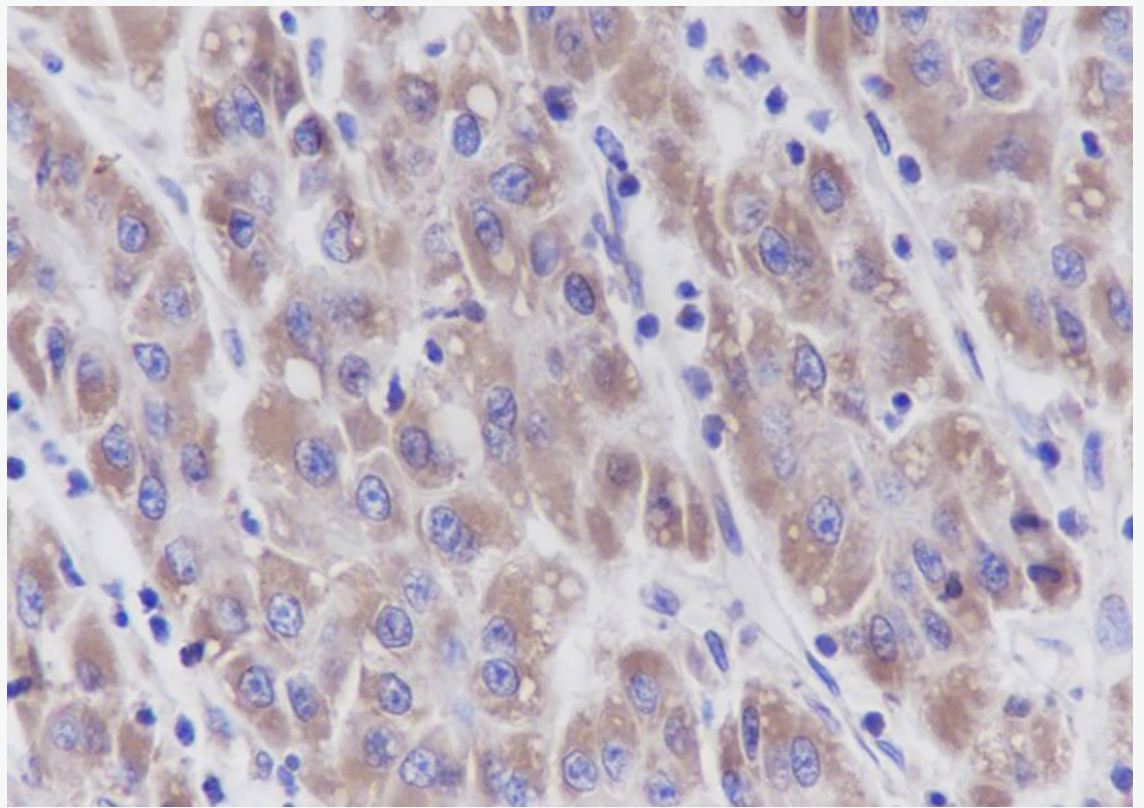
[SwissProt: O96008](#) Human

[SwissProt: Q9QYA2](#) Mouse

[SwissProt: Q75Q40](#) Rat

通道形成蛋白，是将蛋白质前体导入 Mitochondrion 所必需的。在 Mitochondrion 膜呼吸链 NADH 脱氢酶（复合物 I）的组装中起作用，通过与 BCAP31 形成复合物并介导复合物 I 组分从细胞质到 Mitochondrion 的易位。

**Product  
Picture**



Tissue: Human liver cancer

Section type: Formalin fixed & Paraffin -embedded section

Retrieval method: High temperature and high pressure

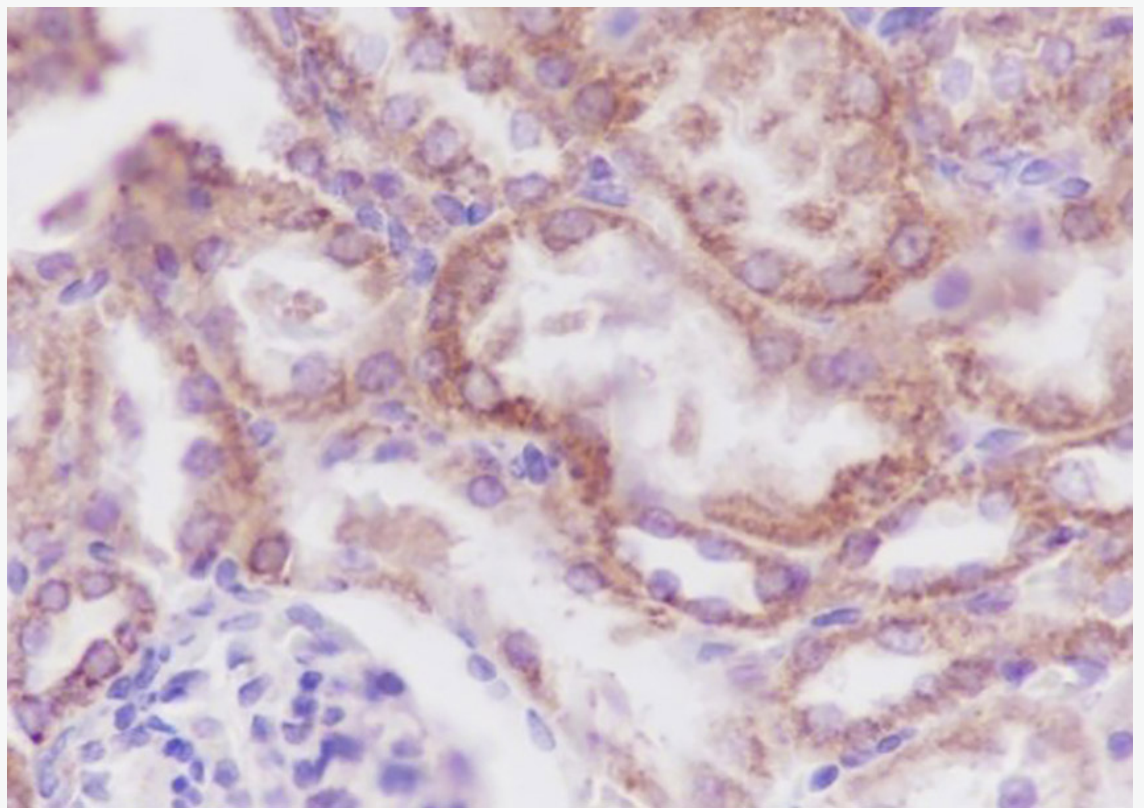
Retrieval buffer: Tris/EDTA buffer, pH 9.0 Primary Ab dilution: 1:100

Primary Ab incubation condition: 1 hour at room temperature

Secondary Ab: SP Kit(Mouse)(sp-0024)

Counter stain: Hematoxylin (Blue)

Comment: Color brown is the positive signal for SLM-60463M



Tissue: Rat kidney

Section type: Formalin fixed & Paraffin -embedded section

Retrieval method: High temperature and high pressure

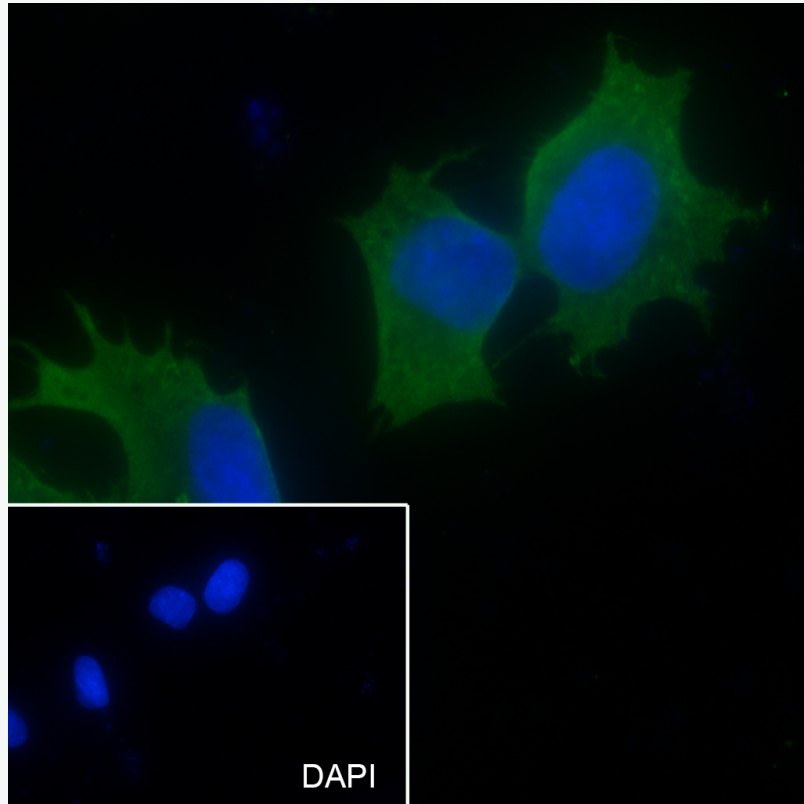
Retrieval buffer: Tris/EDTA buffer, pH 9.0 Primary Ab dilution: 1:100

Primary Ab incubation condition: 1 hour at room temperature

Secondary Ab: SP Kit(Mouse)(sp-0024)

Counter stain: Hematoxylin (Blue)

Comment: Color brown is the positive signal for SLM-60463M



Cell line: HepG2

Fixative: 4% Paraformaldehyde

Permeabilization: 0.1% TritonX-100

Primary Ab dilution: 1:50

Primary incubation condition: 4°C overnight

Secondary Ab: Goat Anti-Rabbit IgG

Nuclear counter stain: DAPI (Blue)

Comment: Color green is the positive signal for SLM-60463M