

## Mouse Anti-LACTB antibody

SLM-60462M

**Product Name** LACTB

**Chinese Name**

**Immunogen Species** Mouse

**Clonality** Monoclonal

**Clone NO.** H2B10

**React Species** Human(predicted:Rat)

WB=1:500-1000,IHC-P=1:100-500,IHC-F=1:100-500,ICC/IF=1:100-500,IF=1:100-500  
(Paraffin sections need antigen repair)

**Applications**

not yet tested in other applications.

optimal dilutions/concentrations should be determined by the end user.

**Cellular localization** The cell membrane

**Form** Liquid

**Concentration** 1mg/ml

**Lsotype** IgG1/Kappa

**Purification** Affinity purified by Protein G

**Buffer Solution** 1M TBS(pH7.4) with 1% BSA, 3% Proclin300 and 50% Glycerol.

**Storage** Shipped at 4°C. Store at -20 °C for one year. Avoid repeated freeze/thaw cycles.

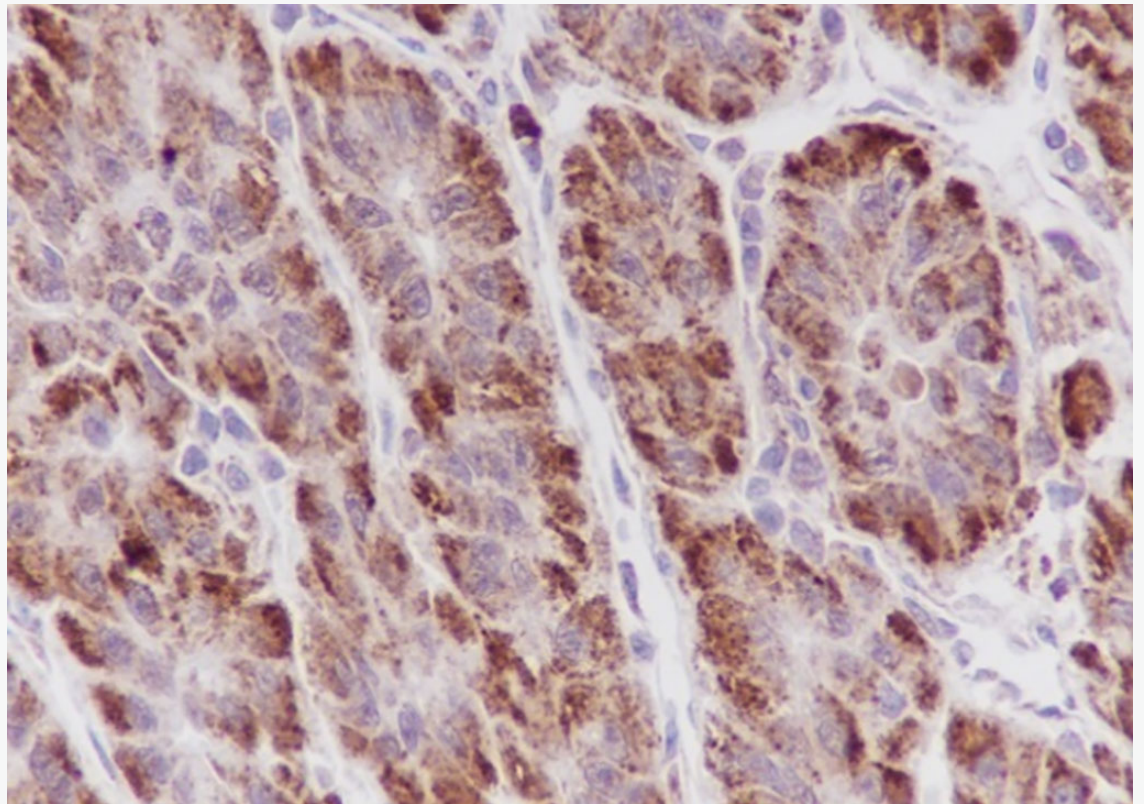
**Attention** This product as supplied is intended for research use only, not for use in human, therapeutic or diagnostic applications.

**PubMed** [PubMed](#)

**Product Detail**

Mitochondrion 丝氨酸蛋白酶,作为 Mitochondrion 脂质代谢的调节者。通过降低 PISD 的蛋白质水平起作用, PISD 是一种 Mitochondrion 酶, 可将磷脂酰丝氨酸 (PtdSer) 转化为磷脂酰乙醇胺 (PtdEtn), 从而影响 Mitochondrion 脂质代谢。目前尚不清楚它是否直接通过介导 PISD 的蛋白水解或介导另一种脂质代谢蛋白的蛋白水解而起作用。作为一种 Tumour 抑制剂, 具有抑制多种类型乳腺癌细胞增殖的能力, 可能通过促进 PISD 水平的降低, 从而影响 Mitochondrion 脂质代谢。

**Product  
Picture**



Tissue: Human liver cancer

Section type: Formalin fixed & Paraffin -embedded section

Retrieval method: High temperature and high pressure

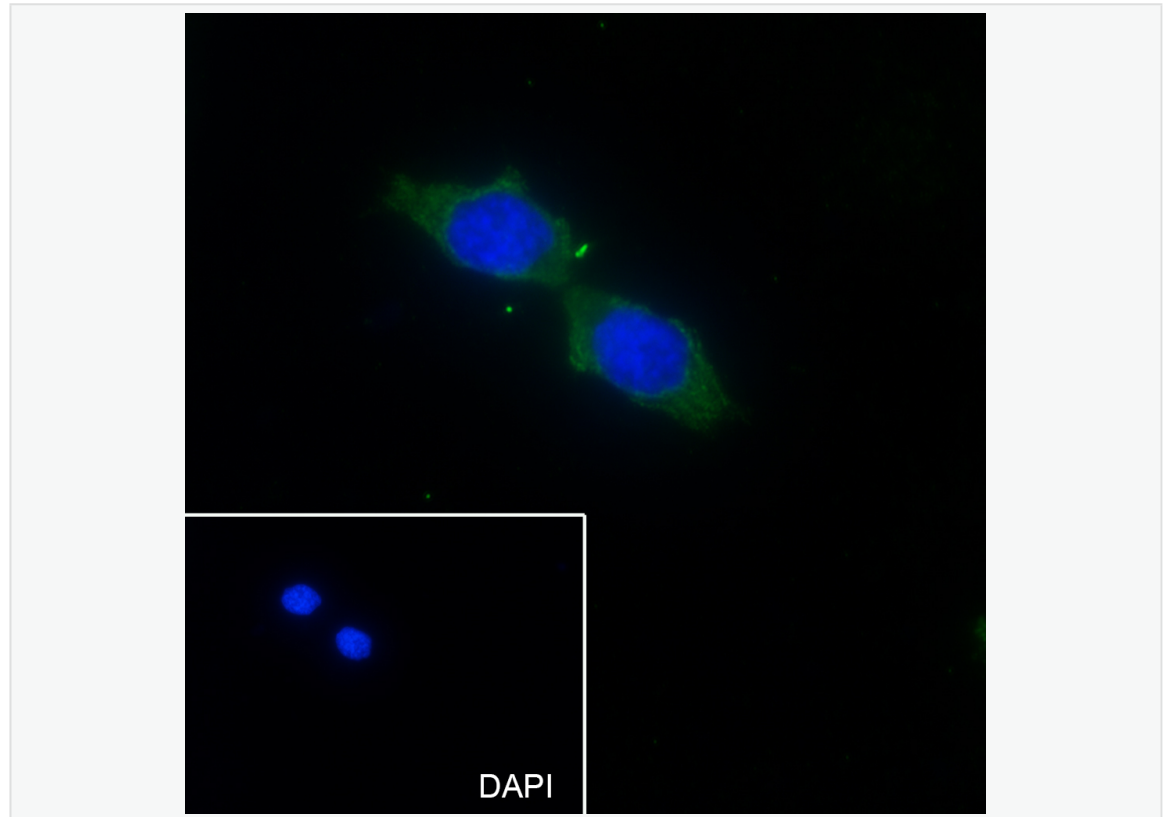
Retrieval buffer: Tris/EDTA buffer, pH 9.0 Primary Ab dilution: 1:100

Primary Ab incubation condition: 1 hour at room temperature

Secondary Ab: SP Kit(Mouse)(sp-0024)

Counter stain: Hematoxylin (Blue)

Comment: Color brown is the positive signal for SLM-60462M



Cell line: HepG2

Fixative: 100% Ice-cold methanol

Permeabilization: 0.1% TritonX-100

Primary ab dilution: 1:50

Primary incubation condition: 4°C overnight

Secondary ab: Goat Anti-Mouse IgG

Nuclear counter stain: DAPI (Blue)

Comment: Color green is the positive signal for SLM-60462M