

## Mouse Anti-KIF20A antibody

SLM-60461M

<b>Product Name</b>	KIF20A
<b>Chinese Name</b>	KIF20A 单克隆抗体
<b>Alias</b>	KI20A_HUMAN; Kinesin-like protein KIF20A; MKLP2; RAB6KIFL; RCM6; GG10_2; Mitotic kinesin-like protein 2 (MKlp2); Rab6-interacting kinesin-like protein; Rabkinesin-6; kinesin family member 20A;
<b>Immunogen Species</b>	Mouse
<b>Clonality</b>	Monoclonal
<b>Clone NO.</b>	E2C8
<b>React Species</b>	Human(predicted:Mouse)
<b>Applications</b>	WB=1:1000-5000,ICC/IF=1:100-500 not yet tested in other applications. optimal dilutions/concentrations should be determined by the end user.
<b>Theoretical molecular weight</b>	100kDa
<b>Cellular localization</b>	The cell membrane
<b>Form</b>	Liquid
<b>Concentration</b>	1mg/ml
<b>Lsotype</b>	IgG2B/Kappa
<b>Purification</b>	Affinity purified by Protein G
<b>Buffer Solution</b>	1M TBS(pH7.4) with 1% BSA, 3% Proclin300 and 50% Glycerol.
<b>Storage</b>	Shipped at 4°C. Store at -20 °C for one year. Avoid repeated freeze/thaw cycles.
<b>Attention</b>	This product as supplied is intended for research use only, not for use in human, therapeutic or diagnostic applications.
<b>PubMed</b>	<a href="#">PubMed</a>
<b>Product Detail</b>	Enables protein kinase binding activity. Involved in microtubule bundle formation; midbody abscission; and regulation of cytokinesis. Located in several cellular components, including cleavage furrow; intercellular bridge; and midbody. Implicated in restrictive cardiomyopathy. [provided by Alliance of Genome Resources, Apr 2022]

**Subcellular Location:**

Golgi apparatus (By similarity). Cytoplasm, cytoskeleton, spindle.

**SWISS:**

O95235

**Gene ID:**

10112

**Database links:**

[Entrez Gene: 10112](#) Human

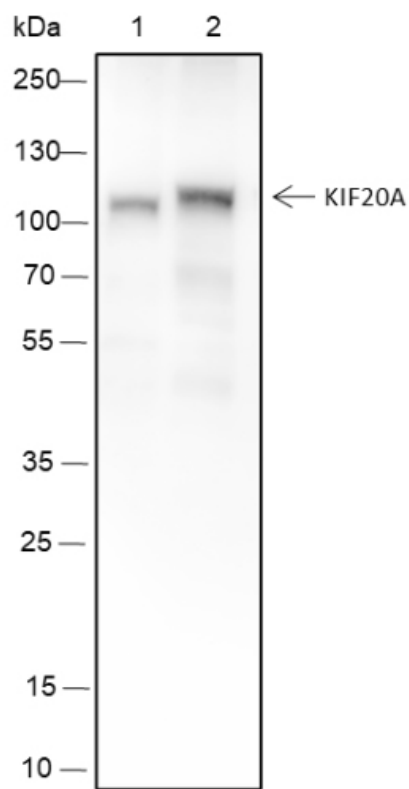
[Entrez Gene: 19348](#) Mouse

[SwissProt: O95235](#) Human

[SwissProt: P97329](#) Mouse

染色体载体复合体（CPC）介导的胞质分裂所需的有丝分裂驱动蛋白。当 PLK1 磷酸化后，参与 PLK1 向中枢纺锤体的募集。可以与三磷酸鸟苷（GTP）结合的 RAB6A 和 RAB6B 相互作用。也可能作为 RAB6 调节高尔基体膜和相关小泡沿微管逆行运输所需的运动，具有微管和末端定向运动。

**Product Picture**



Blocking buffer: 5% NFDN/TBST

Primary Ab dilution: 1:5000

Primary Ab incubation condition: room temperature 2h

Secondary Ab: Goat Anti-Mouse IgG H&L (HRP)

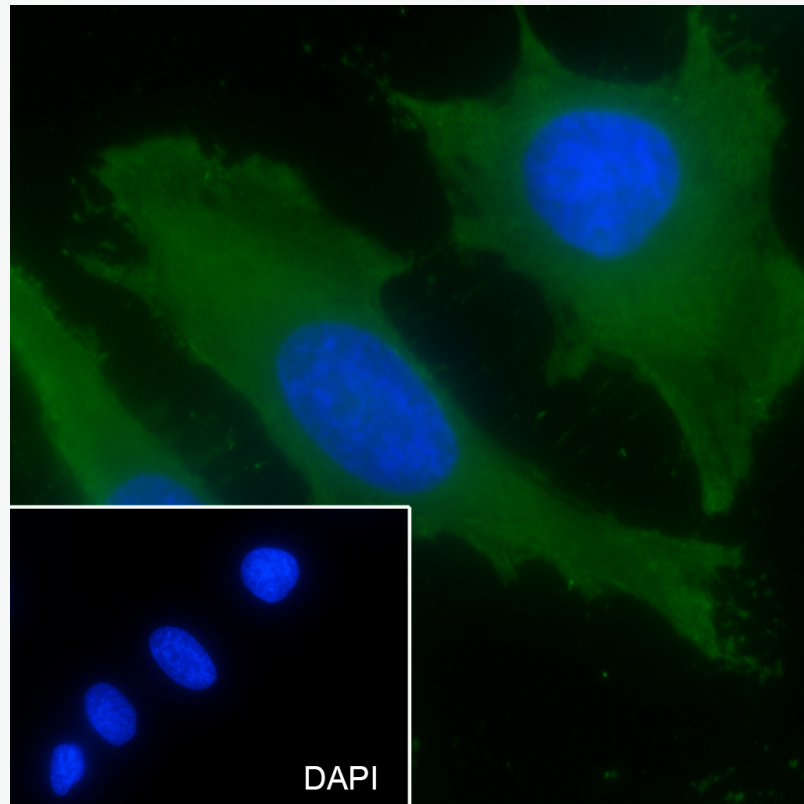
Lysate: 1: JK, 2: N2a

Protein loading quantity: 20  $\mu$ g

Exposure time: 30 s

Predicted MW: 100 kDa

Observed MW: 120 kDa



Cell line: HeLa

Fixative: 100% Ice-cold methanol

Permeabilization: 0.1% TritonX-100

Primary Ab dilution: 1:50

Primary incubation condition: 4°C overnight

Secondary Ab: Goat Anti-Mouse IgG

Nuclear counter stain: DAPI (Blue)

Comment: Color green is the positive signal for SLM-60461M