

Rabbit Anti-GPNMB antibody

SLM-60456R

Product Name GPNMB

Chinese Name

Immunogen Species Rabbit

Clonality Monoclonal

Clone NO. F8D5

React Species Human,Mouse

WB=1:500-1000,IHC-P=1:100-500,IHC-F=1:100-500,IF=1:100-500,Flow-Cyt=1:50-100
(Paraffin sections need antigen repair)

Applications

not yet tested in other applications.

optimal dilutions/concentrations should be determined by the end user.

Cellular localization cytoplasmic The cell membrane

Form Liquid

Concentration 1mg/ml

Lsotype IgG

Purification Affinity purified by Protein A

Buffer Solution 1M TBS(pH7.4) with 1% BSA, 3% Proclin300 and 50% Glycerol.

Storage Shipped at 4°C. Store at -20 °C for one year. Avoid repeated freeze/thaw cycles.

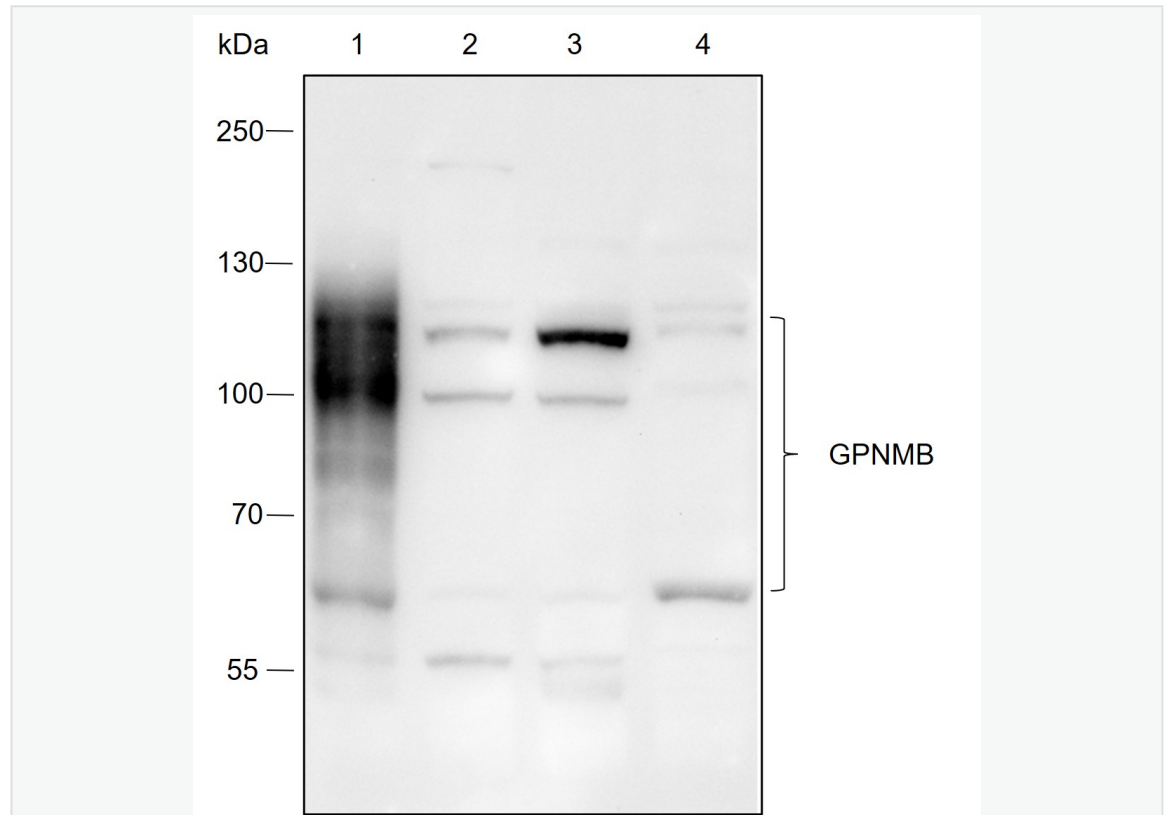
Attention This product as supplied is intended for research use only, not for use in human, therapeutic or diagnostic applications.

PubMed [PubMed](#)

Product Detail

该蛋白是 I 型跨膜 glycoprotein, 与 pMEL17 前体 (一种黑素细胞特异性蛋白) 具有同源性。GPNMB 在低转移性人黑素瘤细胞系和异种移 Botany 中显示表达, 但在高转移性细胞系中未显示表达。GPNMB 可能参与生长延迟和转移潜能的降低。已经为该基因发现了编码不同同工型的两个转录物变体。

**Product
Picture**



Blocking buffer: 5% NFDm/TBST

Primary ab dilution: 1:1000

Primary ab incubation condition: 2 hours at room temperature

Secondary ab: Goat Anti-Rabbit IgG H&L (HRP)

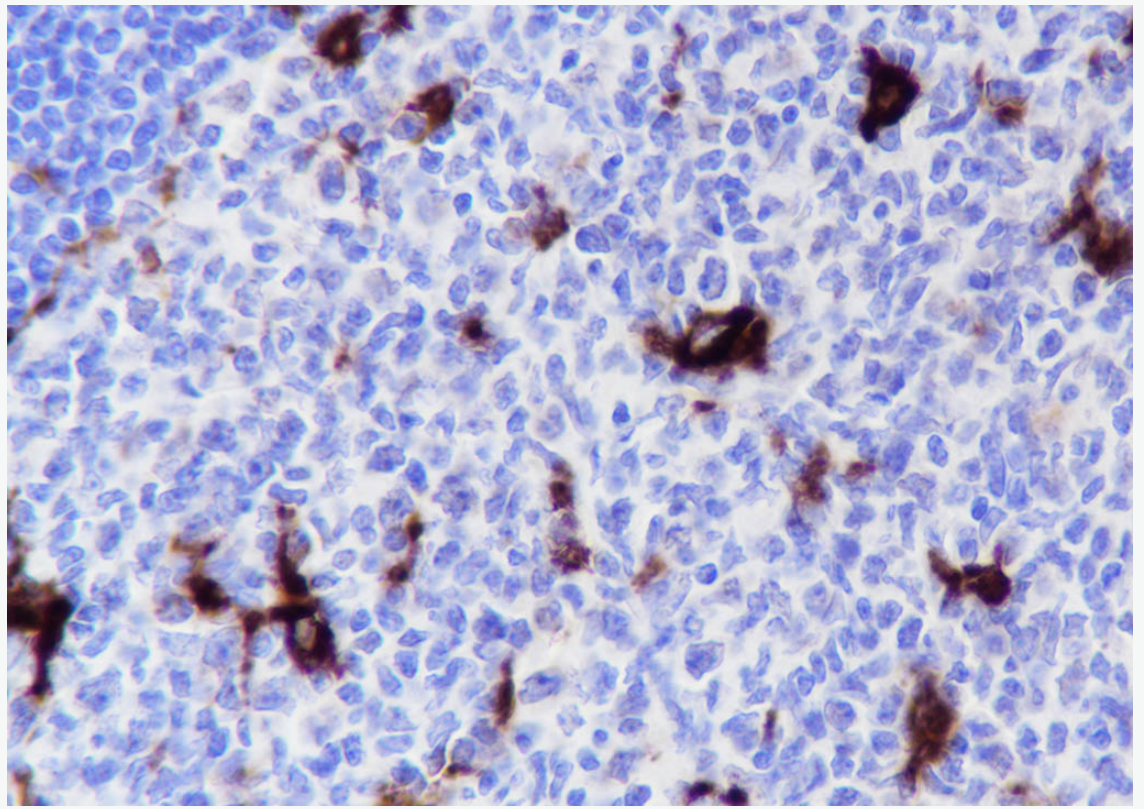
Lysate: 1: A375, 2: B16-F0, 3: EL4.IL-2, 4: HeLa

Protein loading quantity: 20 μ g

Exposure time: 60 s

Predicted MW: 64 kDa

Observed MW: 120,95,65 kDa



Tissue: Human tonsil

Section type: Formalin fixed & Paraffin -embedded section

Retrieval method: High temperature and high pressure

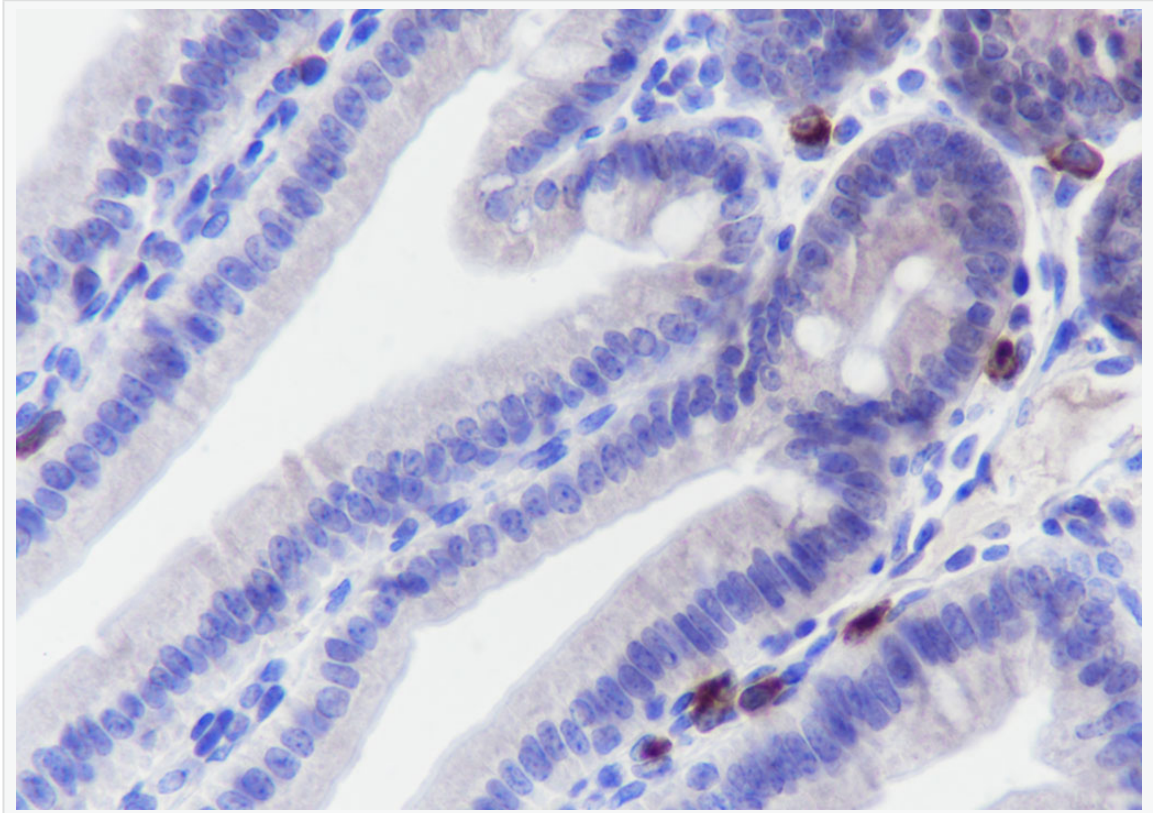
Retrieval buffer: Tris/EDTA buffer, pH 9.0 Primary ab dilution: 1:1000

Primary ab incubation condition: 1 hour at room temperature

Secondary ab: SP Kit(Rabbit) (sp-0023)

Counter stain: Hematoxylin (Blue)

Comment: Color brown is the positive signal for SLM-60456R



Tissue: Mouse small intestine

Section type: Formalin fixed & Paraffin -embedded section

Retrieval method: High temperature and high pressure

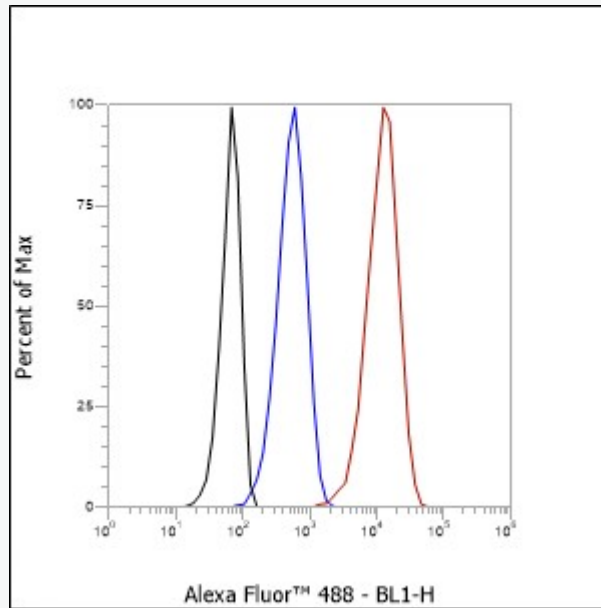
Retrieval buffer: Tris/EDTA buffer, pH 9.0 Primary ab dilution: 1:1000

Primary ab incubation condition: 1 hour at room temperature

Secondary ab: SP Kit(Rabbit) (sp-0023)

Counter stain: Hematoxylin (Blue)

Comment: Color brown is the positive signal for SLM-60456R



Cell line: EL4

Fixative: 4% Paraformaldehyde

Permeabilization: 90% Methanol

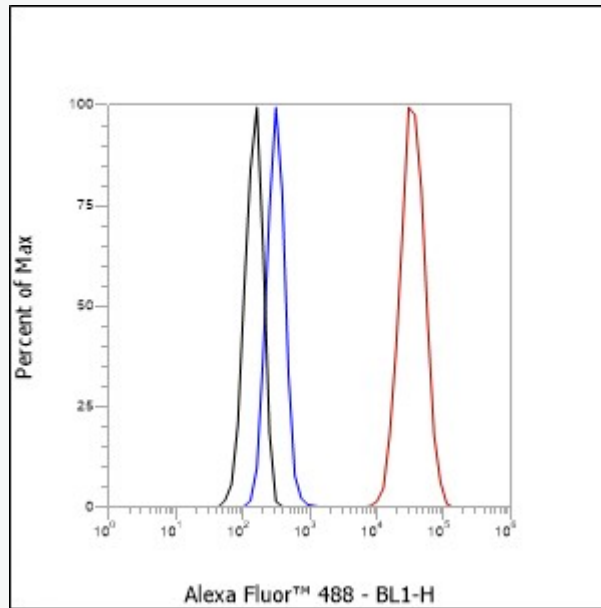
Primary ab dilution: 1:100

Secondary ab: Goat anti Rabbit IgG

Unlabelled control: The cell without incubation with primary antibody and secondary antibody (Black line).

Isotype control: Rabbit monoclonal IgG (Blue line).

Comment: Line red is the positive signal for SLM-60456R



Cell line: A375

Fixative: 4% Paraformaldehyde

Permeabilization: 90% Methanol

Primary ab dilution: 1:100

Secondary ab: Goat anti Rabbit IgG

Unlabelled control: The cell without incubation with primary antibody and secondary antibody (Black line).

Isotype control: Rabbit monoclonal IgG (Blue line).

Comment: Line red is the positive signal for SLM-60456R