



Rabbit Anti-JUNB antibody

SLM-60454R

Product Name JUNB

Chinese Name

Immunogen Species Rabbit

Clonality Monoclonal

Clone NO. C5F3

React Species Human,Mouse

Applications IHC-P=1:50-200,IHC-F=1:50-200,ICC/IF=1:50-200,IF=1:50-200,WB=1:500-2000,Flow-Cyt=1
(Paraffin sections need antigen repair)
not yet tested in other applications.
optimal dilutions/concentrations should be determined by the end user.

Cellular localization The nucleus

Form Liquid

Concentration 1mg/ml

Lsotype IgG

Purification Affinity purified by Protein A

Buffer Solution 1M TBS(pH7.4) with 1% BSA, 3% Proclin300 and 50% Glycerol.

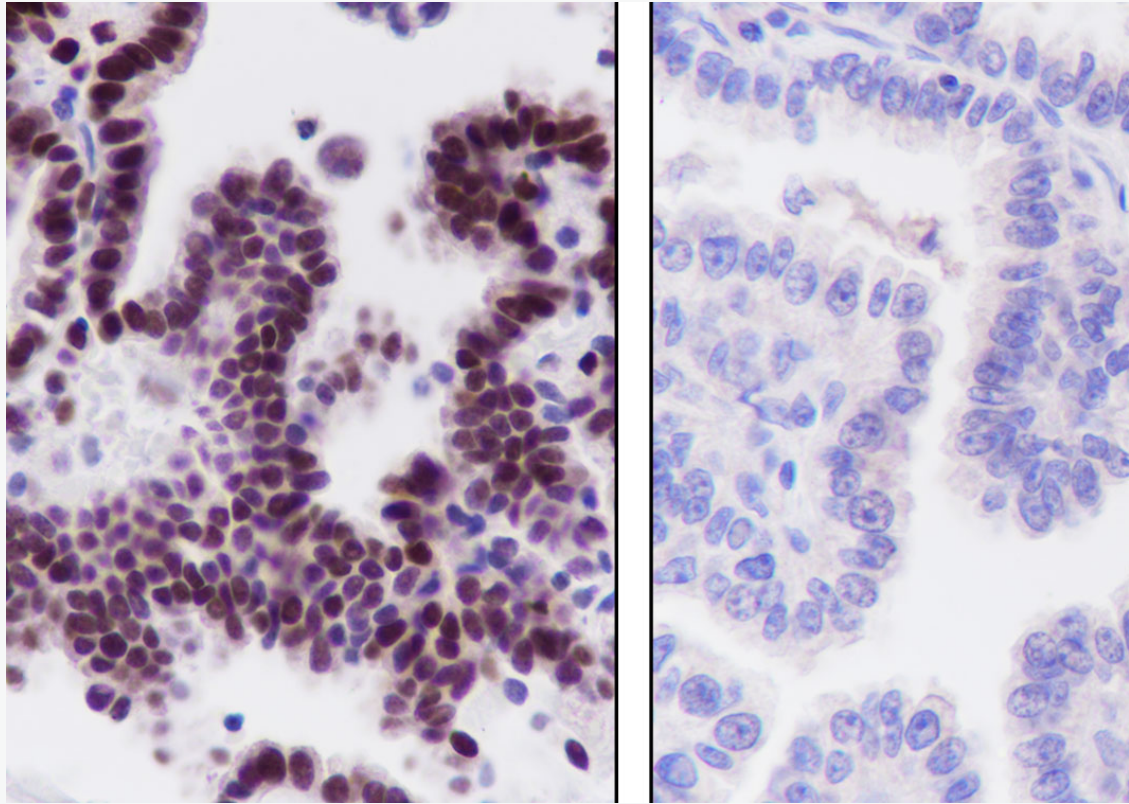
Storage Shipped at 4°C. Store at -20 °C for one year. Avoid repeated freeze/thaw cycles.

Attention This product as supplied is intended for research use only, not for use in human, therapeutic or diagnostic applications.

PubMed [PubMed](#)

Product Detail JUNB 作为转录因子，调节基因活性。

**Product
Picture**



Tissue: Human lung adenocarcinoma

Section type: Formalin fixed & Paraffin -embedded section

Retrieval method: High temperature and high pressure

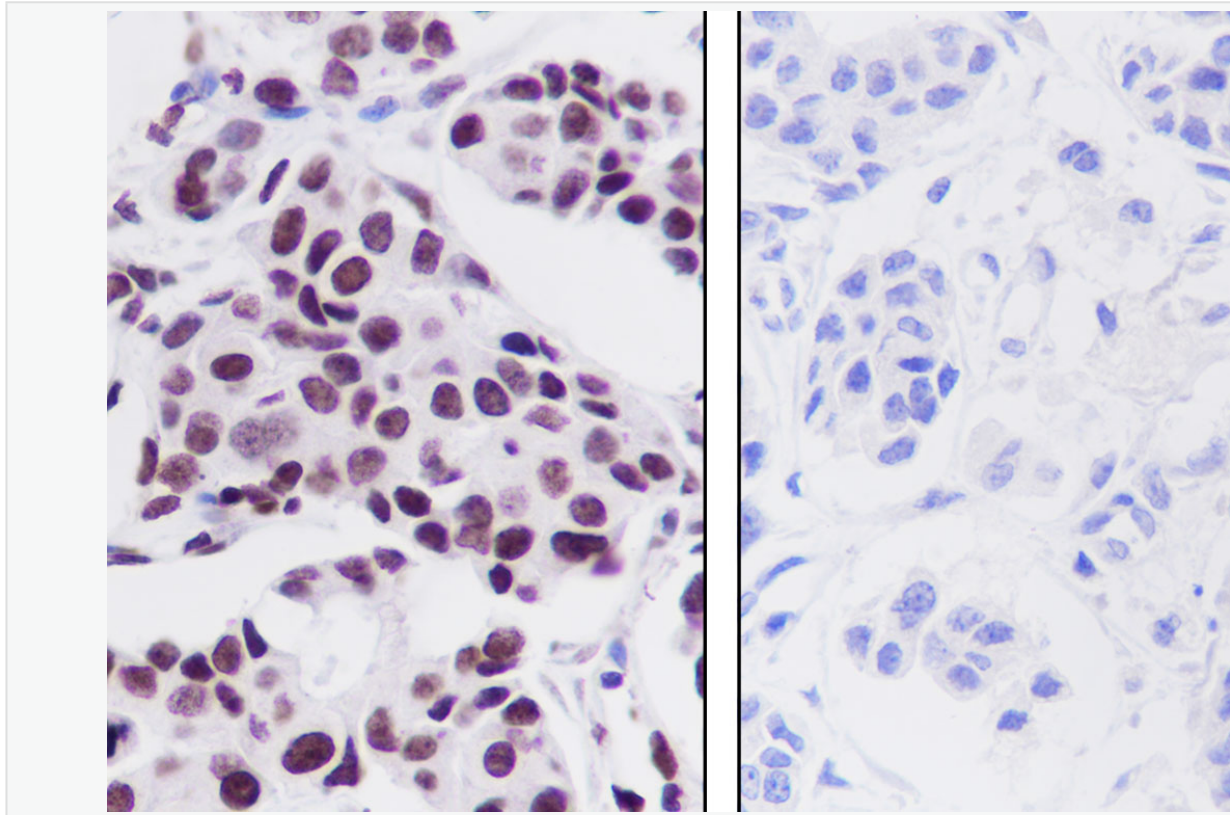
Retrieval buffer: Tris/EDTA buffer, pH 9.0 Primary ab dilution: 1:500

Primary ab incubation condition: 1 hour at room temperature

Secondary ab: SP Kit(Rabbit) (sp-0023)

Counter stain: Hematoxylin (Blue)

Comment: Color brown is the positive signal for SLM-60454R



Tissue: Human breast cancer

Section type: Formalin fixed & Paraffin -embedded section

Retrieval method: High temperature and high pressure

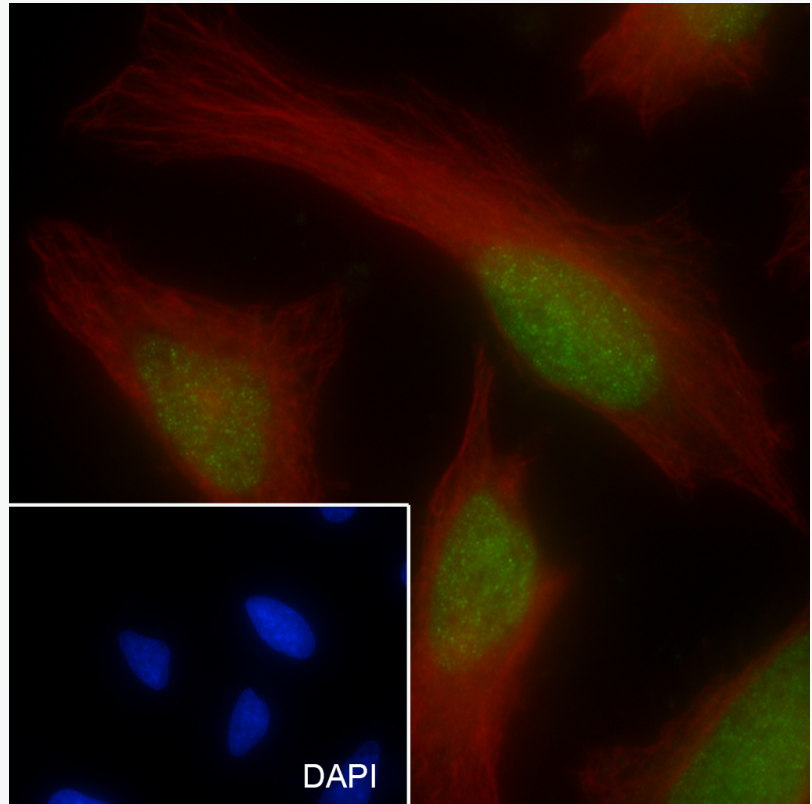
Retrieval buffer: Tris/EDTA buffer, pH 9.0 Primary ab dilution: 1:500

Primary ab incubation condition: 1 hour at room temperature

Secondary ab: SP Kit(Rabbit) (sp-0023)

Counter stain: Hematoxylin (Blue)

Comment: Color brown is the positive signal for SLM-60454R



Cell line: HeLa

Fixative: 100% Ice-cold methanol

Permeabilization: 0.1% TritonX-100

Primary ab dilution: 1:200

Primary incubation condition: 4°C overnight

Secondary ab: Goat Anti-Rabbit IgG

Nuclear counter stain: DAPI (Blue)

Counter stain: Tubulin (Red)

Comment: Color green is the positive signal for SLM-60454R