



## Rabbit Anti-CD23 antibody

SLM-60453R

**Product Name** CD23

**Chinese Name** CD23Recombinant rabbit monoclonal anti

**Alias** Fc EpsilonR II; FcεRII; Blast 2; Blast2; C type lectin domain family 4 member J; C-type lectin domain family 4, member J; CD 23; CD 23A; CD23 antigen; CD23A; CLEC 4J; CLEC4J; Fc epsilon RII; Fc fragment of IgE low affinity II receptor for; Fc fragment of IgE, low affinity II, receptor for (CD23); Fc of IgE, low affinity II, receptor for (CD23); Fc receptor IgE low affinity II alpha polypeptide; Fc receptor, IgE, low affinity II, alpha polypeptide, isoform CRA\_a; FCE 2; FCE2; FCER 2; FCER2; FCER2A; IgE binding factor; IgE receptor lymphocyte; IgE-binding factor; IGEBF; Immunoglobulin E binding factor; Immunoglobulin E receptor, low affinity II; Low affinity immunoglobulin epsilon Fc receptor; Low affinity immunoglobulin epsilon Fc receptor membrane bound form; Low affinity immunoglobulin epsilon Fc receptor soluble form; Ly-42; Ly42; Lymphocyte antigen CD23; Lymphocyte IgE receptor; MGC93219.

**Research Area** Cell biology immunology Stem cells Cell type markers lymphocyte t-lymphocyte

**Immunogen Species** Rabbit

**Clonality** Monoclonal

**Clone NO.** C2F9

**React Species** Human

**Applications** IHC-P=1:100-500,IHC-F=1:100-500,IF=1:100-500 (Paraffin sections need antigen repair)  
not yet tested in other applications.  
optimal dilutions/concentrations should be determined by the end user.

**Theoretical molecular weight** 36kDa

**Cellular localization** The cell membrane Secretory protein

**Form** Liquid

**Concentration** 1mg/ml

**immunogen** KLH conjugated synthetic peptide derived from human CD23



---

|                        |  |
|------------------------|--|
| <b>Lsotype</b>         | IgG  |
| <b>Purification</b>    | affinity purified by Protein A   |
| <b>Buffer Solution</b> | 1M TBS(pH7.4) with 1% BSA, 3% Proclin300 and 50% Glycerol.   |
| <b>Storage</b>         | Shipped at 4°C. Store at -20 °C for one year. Avoid repeated freeze/thaw cycles.   |
| <b>Attention</b>       | This product as supplied is intended for research use only, not for use in human, therapeutic or diagnostic applications.  |
| <b>PubMed</b>          | <a href="#">PubMed</a><br>The protein encoded by this gene is a B-cell specific antigen, and a low-affinity receptor for IgE. It has essential roles in B cell growth and differentiation, and the regulation of IgE production. This protein also exists as a soluble secreted form, then functioning as a potent mitogenic growth factor. Alternatively spliced transcript variants encoding different isoforms have been described for this gene.[provided by RefSeq, Jul 2011] |
| <b>Product Detail</b>  | <b>Function:</b><br>Low-affinity receptor for immunoglobulin E (IgE) and CR2/CD21. Has essential roles in the regulation of IgE production and in the differentiation of B-cells (it is a B-cell-specific antigen).  |
|                        | <b>Subcellular Location:</b><br>Cell membrane; Single-pass type II membrane protein. Secreted. Note=Also exists as a soluble excreted form.  |
|                        | <b>Post-translational modifications:</b><br>N- and O-glycosylated.   |
|                        | <b>Similarity:</b><br>Contains 1 C-type lectin domain.   |
|                        | <b>SWISS:</b><br>P06734  |
|                        | <b>Gene ID:</b><br>2208  |
|                        | <b>Database links:</b><br><a href="#">Entrez Gene: 2208</a> Human<br><a href="#">Entrez Gene: 14128</a> Mouse<br><a href="#">Omim: 151445</a> Human<br><a href="#">SwissProt: P06734</a> Human   |

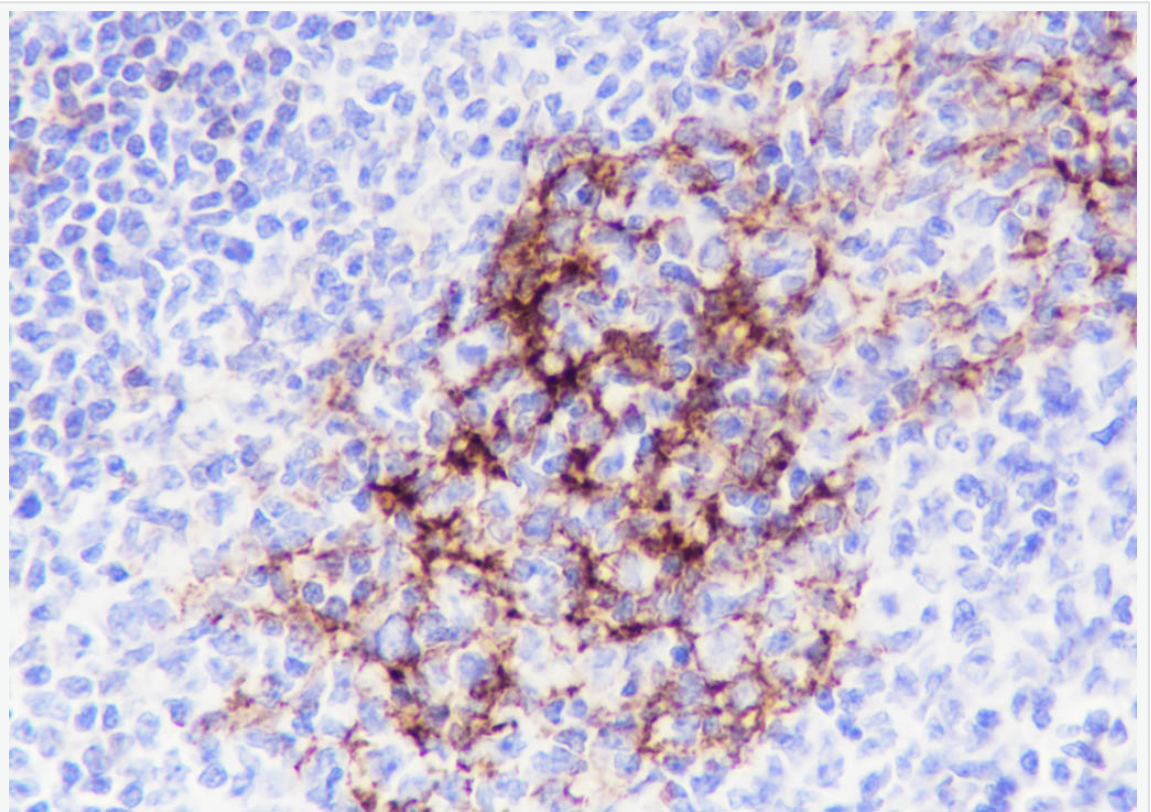
[SwissProt: P20693](#) Mouse

[Unigene: 465778](#) Human

[Unigene: 1233](#) Mouse

CD23 是一种 II 型跨膜 glycoprotein，是存在于 B 细胞表面的 IgE 受体。在慢性 Blymphocyte 白血病（CLL）和小 B 细胞淋巴瘤（SLL）为阳性，套细胞淋巴瘤和小核裂 lymphocyte 淋巴瘤阴性。也表达于外周血 B 细胞的某些亚型、Blymphocyte 和 EB 病毒转染的 B 淋巴瘤细胞系。CD23 是慢性 Blymphocyte 白血病，小 B 细胞淋巴瘤诊断和鉴别诊断有用的标记物。

**Product  
Picture**



Tissue: Human tonsil

Section type: Formalin fixed & Paraffin -embedded section

Retrieval method: High temperature and high pressure

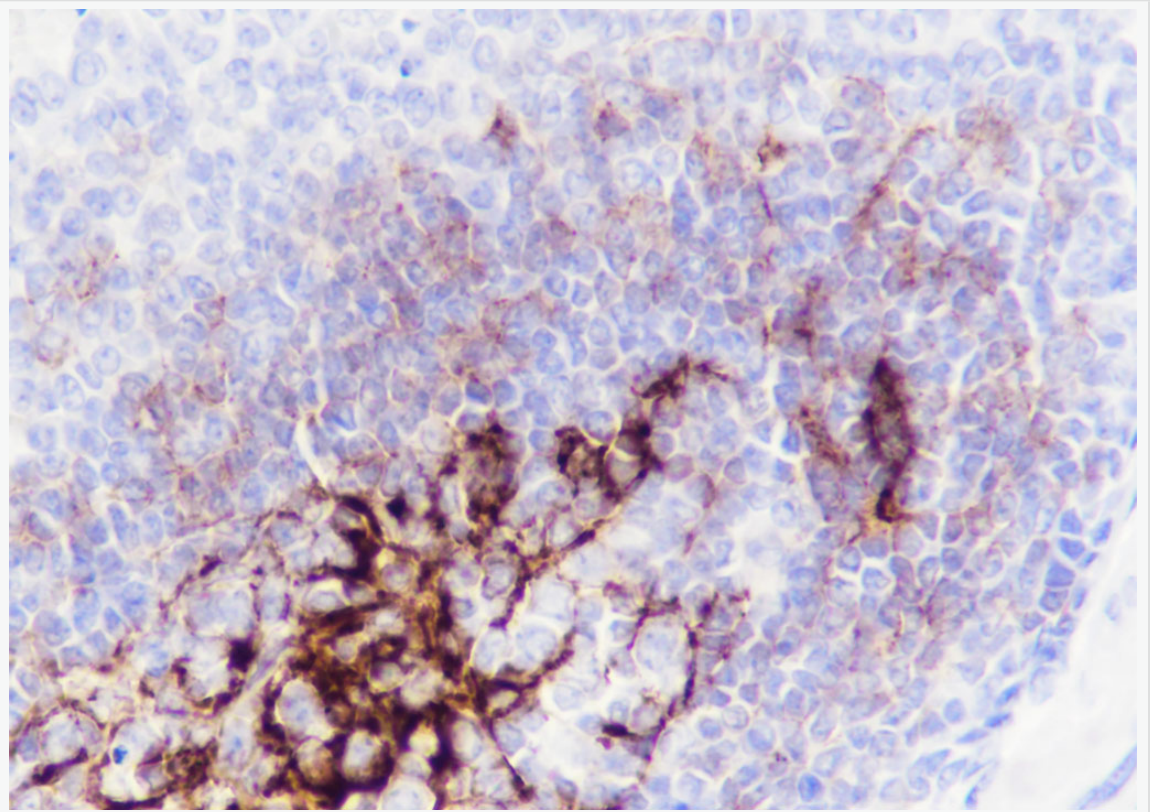
Retrieval buffer: Tris/EDTA buffer, pH 9.0 Primary ab dilution: 1:1000

Primary ab incubation condition: 1 hour at room temperature

Secondary ab: SP Kit(Rabbit) (sp-0023)

Counter stain: Hematoxylin (Blue)

Comment: Color brown is the positive signal for SLM-60453R



Tissue: Human spleen

Section type: Formalin fixed & Paraffin -embedded section

Retrieval method: High temperature and high pressure

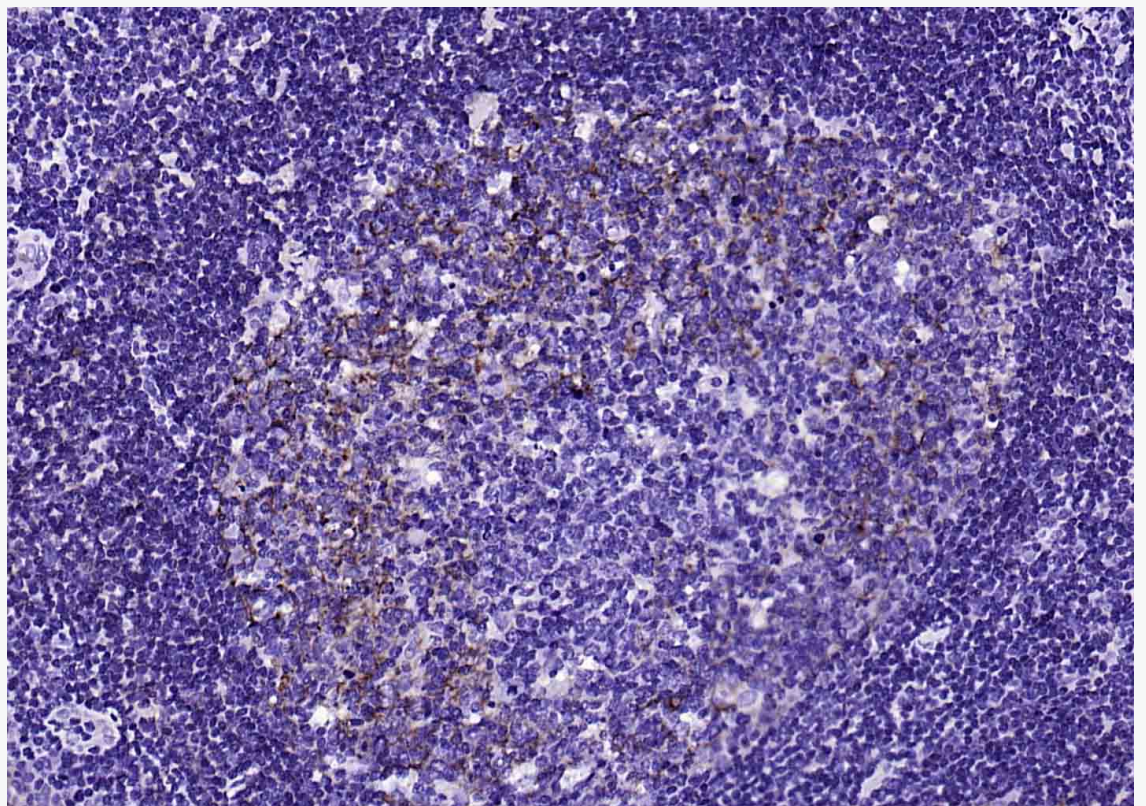
Retrieval buffer: Tris/EDTA buffer, pH 9.0 Primary ab dilution: 1:1000

Primary ab incubation condition: 1 hour at room temperature

Secondary ab: SP Kit(Rabbit) (sp-0023)

Counter stain: Hematoxylin (Blue)

Comment: Color brown is the positive signal for SLM-60453R



Paraformaldehyde-fixed, paraffin embedded (human tonsil); Antigen retrieval by boiling in sodium citrate buffer (pH6.0) for 15min; Block endogenous peroxidase by 3% hydrogen peroxide for 20 minutes; Blocking buffer (normal goat serum) at 37°C for 30min; Antibody incubation with (CD23) Monoclonal Antibody, Unconjugated (SLM-60453R) at 1:200 overnight at 4°C, followed by operating according to SP Kit(Rabbit) (sp-0023) instructions and DAB staining.



SunLong Biotech Co.,LTD  
Tel: 0086-571-56623320 Fax:0086-571-56623318  
E-mail:sales@sunlongbiotech.com  
www.sunlongbiotech.com

---