

## Mouse Anti-CAPG antibody

SLM-60451M

<b>Product Name</b>	CAPG
<b>Chinese Name</b>	
<b>Immunogen Species</b>	Mouse
<b>Clonality</b>	Monoclonal
<b>Clone NO.</b>	G11D9
<b>React Species</b>	Human,Mouse
<b>Applications</b>	WB=1:500-2000,ICC/IF=1:50-200 not yet tested in other applications. optimal dilutions/concentrations should be determined by the end user.
<b>Cellular localization</b>	The nucleus The cell membrane
<b>Form</b>	Liquid
<b>Concentration</b>	1mg/ml
<b>Lsotype</b>	IgG1/Kappa
<b>Purification</b>	Affinity purified by Protein G
<b>Buffer Solution</b>	1M TBS(pH7.4) with 1% BSA, 3% Proclin300 and 50% Glycerol.
<b>Storage</b>	Shipped at 4°C. Store at -20 °C for one year. Avoid repeated freeze/thaw cycles.
<b>Attention</b>	This product as supplied is intended for research use only, not for use in human, therapeutic or diagnostic applications.
<b>PubMed</b>	<a href="#">PubMed</a>
<b>Product Detail</b>	钙敏感蛋白，可逆地阻断肌动蛋白丝的刺端，但不切断肌动蛋白丝。可能在巨噬细胞功能中起重要作用。也可能通过与肌动蛋白的潜在相互作用在调节细胞质和/或核结构中发挥作用。还可能与 DNA 结合。

### Product Picture



Blocking buffer: 5% NFDN/TBST

Primary Ab dilution: 1:10000

Primary Ab incubation condition: room temperature 2h

Secondary Ab: Goat Anti-Mouse IgG H&L (HRP)

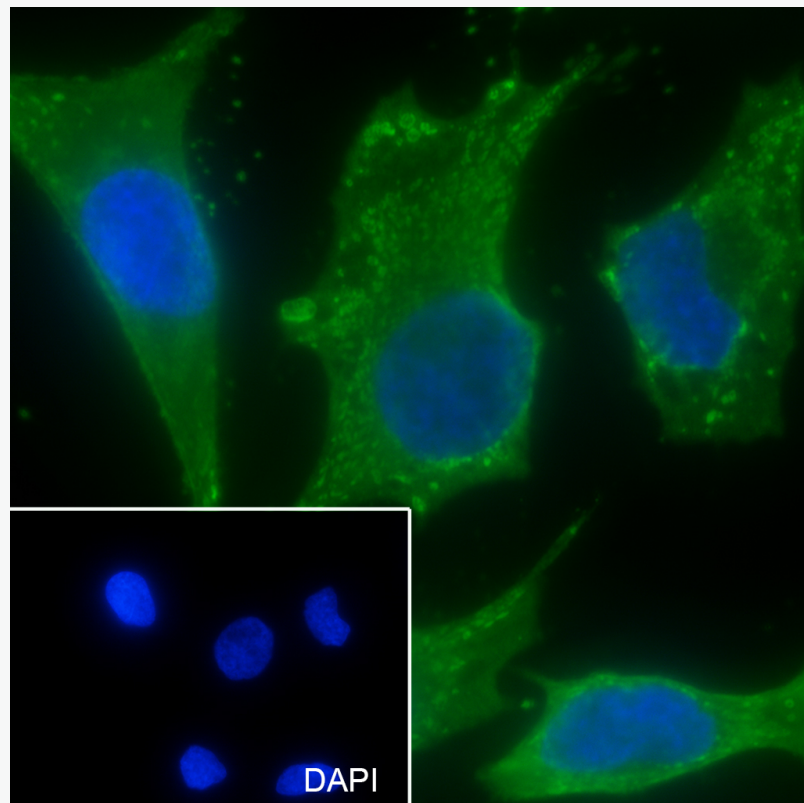
Lysate: 1: HeLa, 2: Jurkat, 3: Raw264.7

Protein loading quantity: 20  $\mu$ g

Exposure time: 3 s

Predicted MW: 40 kDa

Observed MW: 40 kDa



Cell line: HeLa

Fixative: 4% Paraformaldehyde

Permeabilization: 0.1% TritonX-100

Primary Ab dilution: 1:50

Primary incubation condition: 4°C overnight

Secondary Ab: Goat Anti-Rabbit IgG

Nuclear counter stain: DAPI (Blue)

Comment: Color green is the positive signal for SLM-60451M