

## Mouse Anti-Catalase antibody

SLM-60450M

**Product Name** Catalase

**Chinese Name** 成骨细胞特异性因子 2 重组鼠单抗

**Alias** Cas1; CAT; Cs1; MGC138422; MGC138424; CATA\_HUMAN.

**Research Area** Tumour Cardiovascular immunology Signal transduction

**Immunogen Species** Mouse

**Clonality** Monoclonal

**React Species** Human,Mouse,Rat

**Applications** WB=1:500-2000,IHC-P=1:50-200,IHC-F=1:50-200,IF=1:50-200 (Paraffin sections need antigen repair)  
not yet tested in other applications.  
optimal dilutions/concentrations should be determined by the end user.

**Theoretical molecular weight** 60kDa

**Cellular localization** cytoplasmic

**Form** Liquid

**Concentration** 1mg/ml

**immunogen** KLH conjugated synthetic peptide derived from human Catalase

**Lsotype** IgG1/Kappa

**Purification** affinity purified by Protein G

**Buffer Solution** 1M TBS(pH7.4) with 1% BSA, 3% Proclin300 and 50% Glycerol.

**Storage** Shipped at 4°C. Store at -20 °C for one year. Avoid repeated freeze/thaw cycles.

**Attention** This product as supplied is intended for research use only, not for use in human, therapeutic or diagnostic applications.

**PubMed** [PubMed](#)

**Product Detail** This gene encodes catalase, a key antioxidant enzyme in the bodies defense against oxidative stress. Catalase is a heme enzyme that is present in the peroxisome of nearly all

aerobic cells. Catalase converts the reactive oxygen species hydrogen peroxide to water and oxygen and thereby mitigates the toxic effects of hydrogen peroxide. Oxidative stress is hypothesized to play a role in the development of many chronic or late-onset diseases such as diabetes, asthma, Alzheimer's disease, systemic lupus erythematosus, rheumatoid arthritis, and cancers. Polymorphisms in this gene have been associated with decreases in catalase activity but, to date, acatalasemia is the only disease known to be caused by this gene. [provided by RefSeq, Oct 2009]

**SWISS:**  
P04040

**Gene ID:**  
847

**Database links:**

[Entrez Gene: 847](#) Human

[Entrez Gene: 12359](#) Mouse

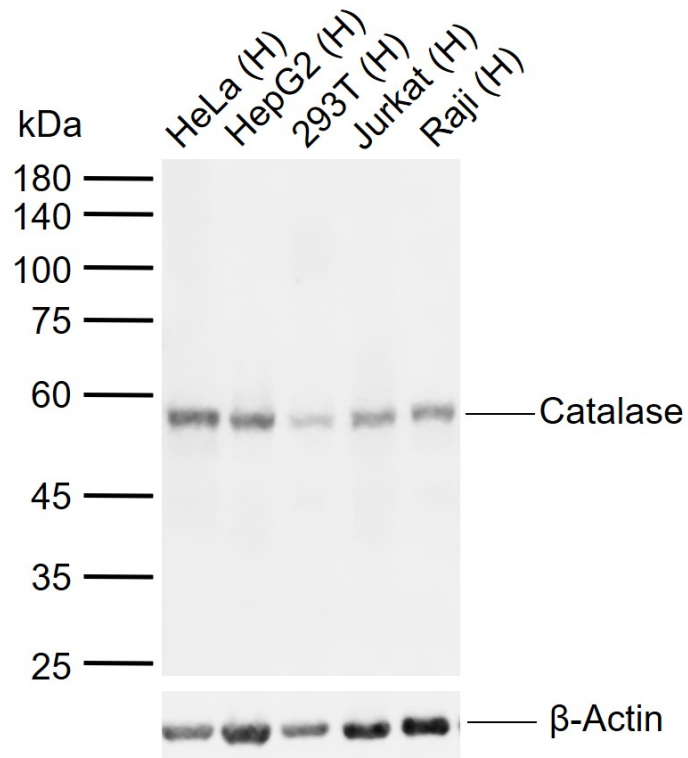
[Entrez Gene: 24248](#) Rat

[SwissProt: P04040](#) Human

[SwissProt: P24270](#) Mouse

[SwissProt: P04762](#) Rat

**Product  
Picture**



Sample:

Lane 1: Human HeLa cell lysates

Lane 2: Human HepG2 cell lysates

Lane 3: Human 293T cell lysates

Lane 4: Human Jurkat cell lysates

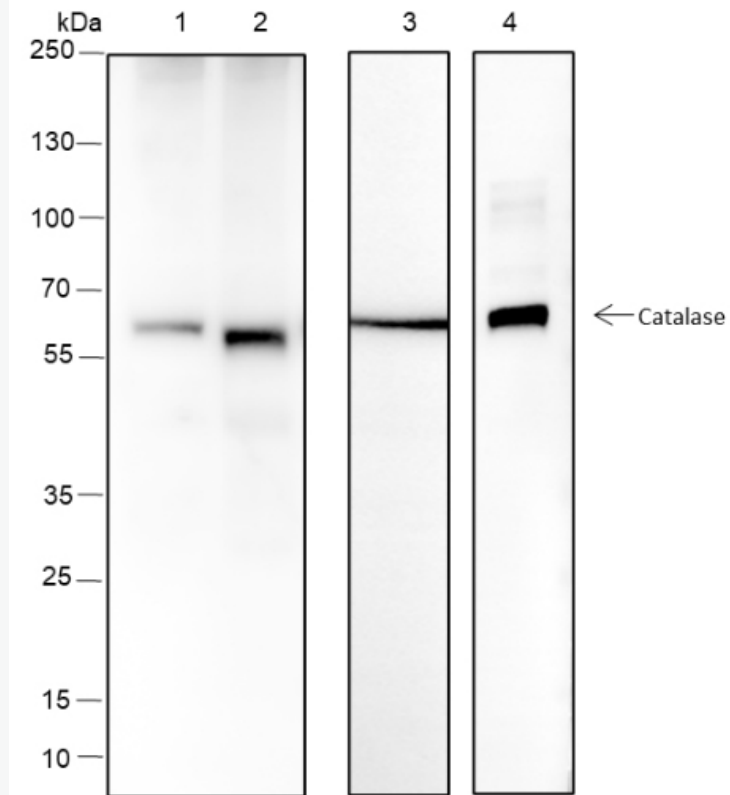
Lane 5: Human Raji cell lysates

Primary: Anti-Catalase (SLM-60450M) at 1/1000 dilution

Secondary: IRDye800CW Goat Anti-Mouse IgG at 1/20000 dilution

Predicted band size: 60 kDa

Observed band size: 58 kDa



Blocking buffer: 5% NFDM/TBST

Primary Ab dilution: 1:3000

Primary Ab incubation condition: room temperature 2h

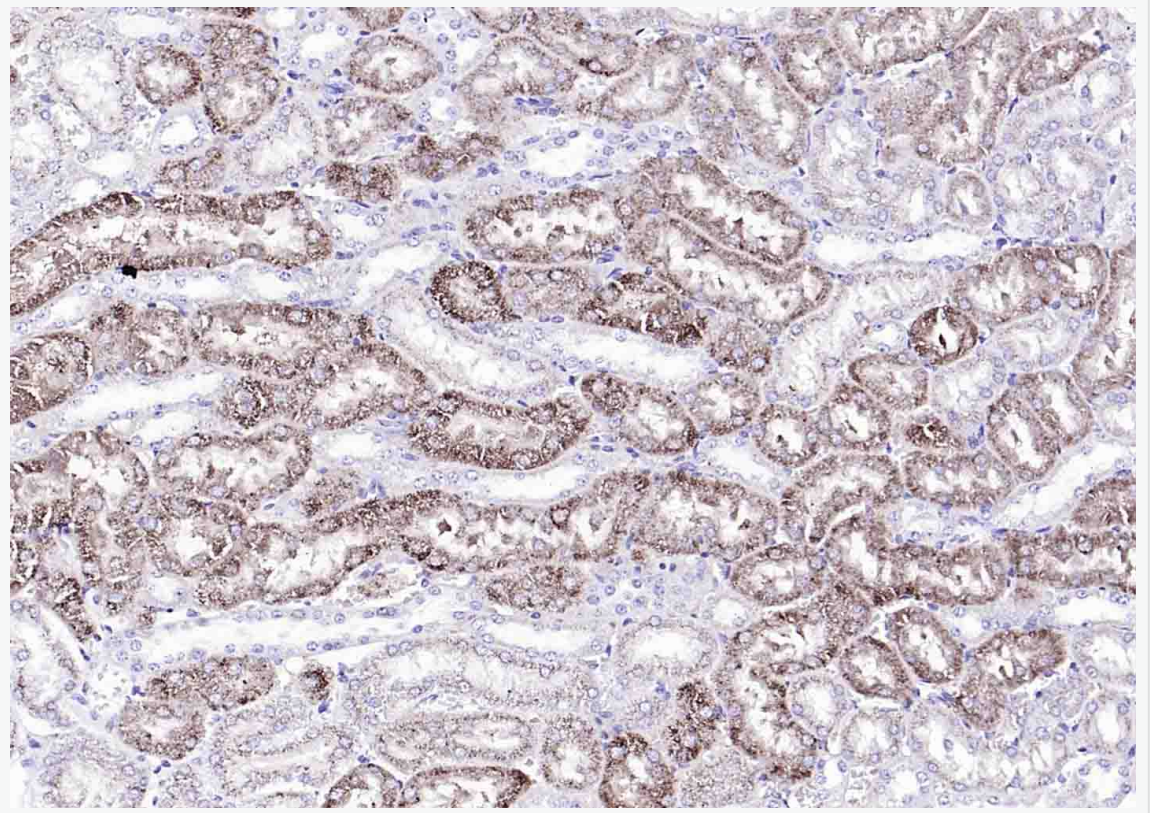
Secondary Ab: Goat Anti-Mouse IgG H&L (HRP)

Lysate: 1:SH-SY5Y, 2: C2C12, 3: HepG2, 4: C6

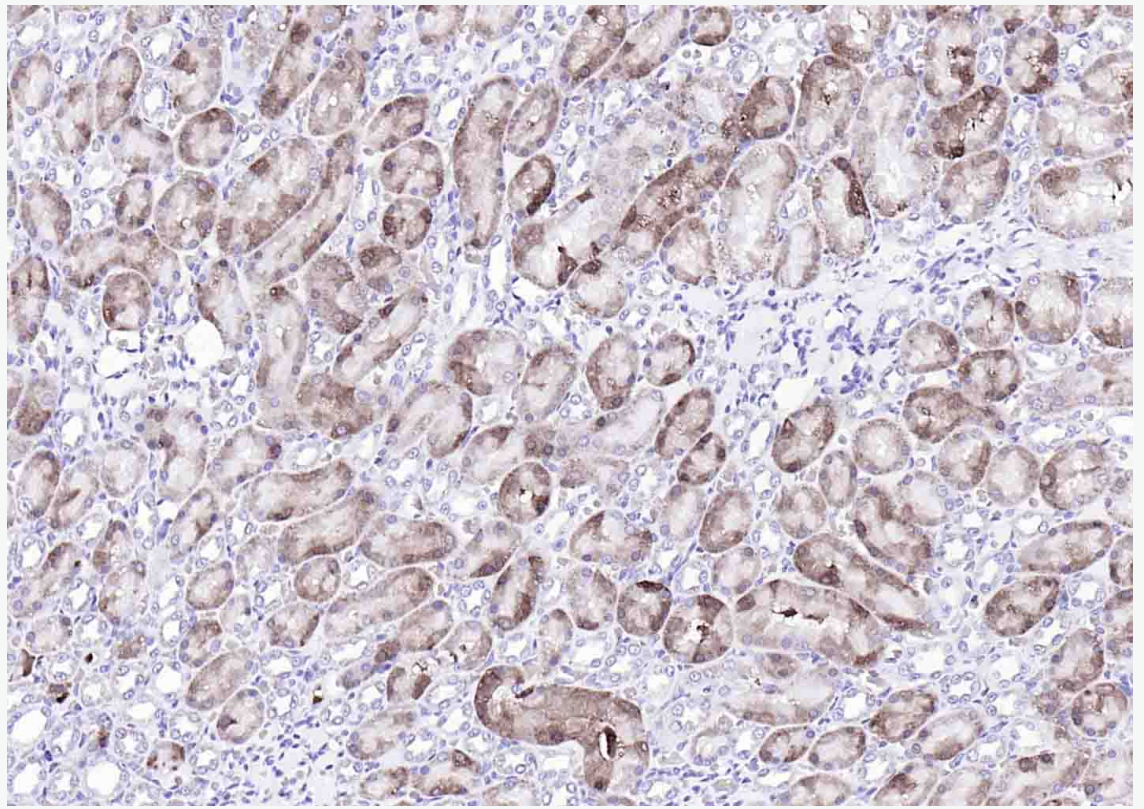
Protein loading quantity: 20  $\mu$ g

Exposure time: 60/10/60 s

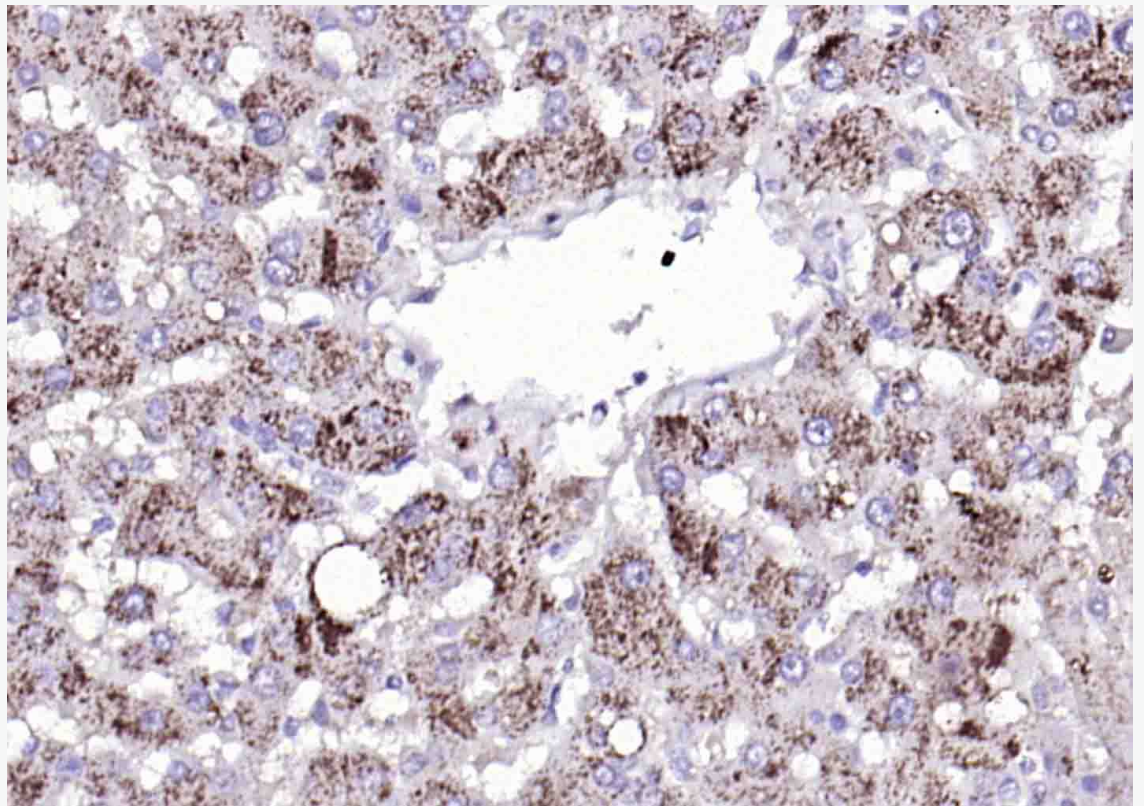
Predicted MW: 60 kDa



Paraformaldehyde-fixed, paraffin embedded (mouse kidney); Antigen retrieval by boiling in sodium citrate buffer (pH6.0) for 15min; Block endogenous peroxidase by 3% hydrogen peroxide for 20 minutes; Blocking buffer (normal goat serum) at 37°C for 30min; Antibody incubation with (Catalase) Monoclonal Antibody, Unconjugated (SLM-60450M) at 1:200 overnight at 4°C, followed by operating according to SP Kit(Mouse)(sp-0024) instructions and DAB staining.



Paraformaldehyde-fixed, paraffin embedded (rat kidney); Antigen retrieval by boiling in sodium citrate buffer (pH6.0) for 15min; Block endogenous peroxidase by 3% hydrogen peroxide for 20 minutes; Blocking buffer (normal goat serum) at 37°C for 30min; Antibody incubation with (Catalase) Monoclonal Antibody, Unconjugated (SLM-60450M) at 1:200 overnight at 4°C, followed by operating according to SP Kit(Mouse)(sp-0024) instructions and DAB staining.



Paraformaldehyde-fixed, paraffin embedded (Human liver); Antigen retrieval by boiling in sodium citrate buffer (pH6.0) for 15min; Block endogenous peroxidase by 3% hydrogen peroxide for 20 minutes; Blocking buffer (normal goat serum) at 37°C for 30min; Antibody incubation with (Catalase) Monoclonal Antibody, Unconjugated (SLM-60450M) at 1:200 overnight at 4°C, followed by operating according to SP Kit(Mouse)(sp-0024) instructions and DAB staining.