



Mouse Anti-14-3-3 sigma antibody

SLM-60449M

Product Name 14-3-3 sigma**Chinese Name** 14-3-3 sigma 重组鼠单抗**Alias** 14 3 3 protein sigma; 14-3-3 protein sigma; 1433S_HUMAN; Epithelial cell marker protein 1; Er; HME 1; HME1; MGC143283; Mkn3; Mme1; OTTHUMP0000004242; RP23 137L22.11; SFN; SFN protein; Stratifin; YWHAS.**Research Area** Tumour Cell biology Neurobiology Signal transduction Stem cells Apoptosis**Immunogen Species** Mouse**Clonality** Monoclonal**React Species** Human**Applications** WB=1:500-2000,IHC-P=1:50-100,IHC-F=1:400-800,IF=1:100-500 (Paraffin sections need antigen repair)
not yet tested in other applications.
optimal dilutions/concentrations should be determined by the end user.**Theoretical molecular weight** 28kDa**Cellular localization** cytoplasmic Secretory protein**Form** Liquid**Concentration** 1mg/ml**immunogen** KLH conjugated synthetic peptide derived from human 14-3-3 sigma**Lsotype** IgG1/Kappa**Purification** affinity purified by Protein G**Buffer Solution** 1M TBS(pH7.4) with 1% BSA, 3% Proclin300 and 50% Glycerol.**Storage** Shipped at 4°C. Store at -20 °C for one year. Avoid repeated freeze/thaw cycles.**Attention** This product as supplied is intended for research use only, not for use in human, therapeutic or diagnostic applications.**PubMed** [PubMed](#)

This gene encodes a cell cycle checkpoint protein. The encoded protein binds to translation and initiation factors and functions as a regulator of mitotic translation. In response to DNA damage this protein plays a role in preventing DNA errors during mitosis. [provided by RefSeq, Aug 2017]

SWISS:
P31947

**Product
Detail**

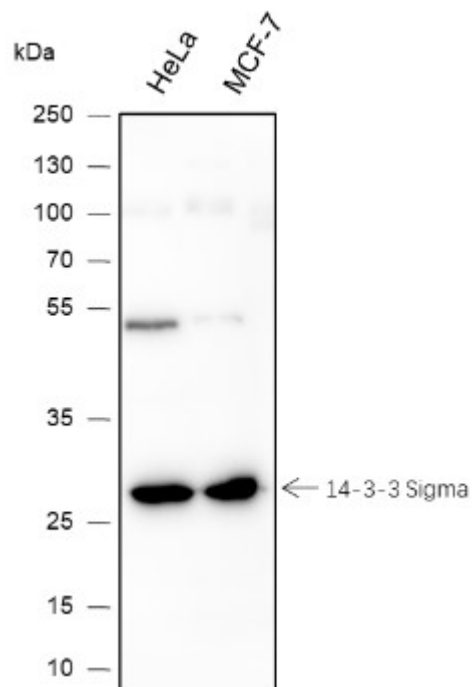
Gene ID:
2810

Database links:

[Entrez Gene: 2810](#) Human

[SwissProt: P31947](#) Human

**Product
Picture**



Blocking buffer: 5% NFDM/TBST

Primary ab dilution: 1:1000

Primary ab incubation condition: room temperature 2h

Secondary ab: Goat Anti-Mouse IgG H&L (HRP)

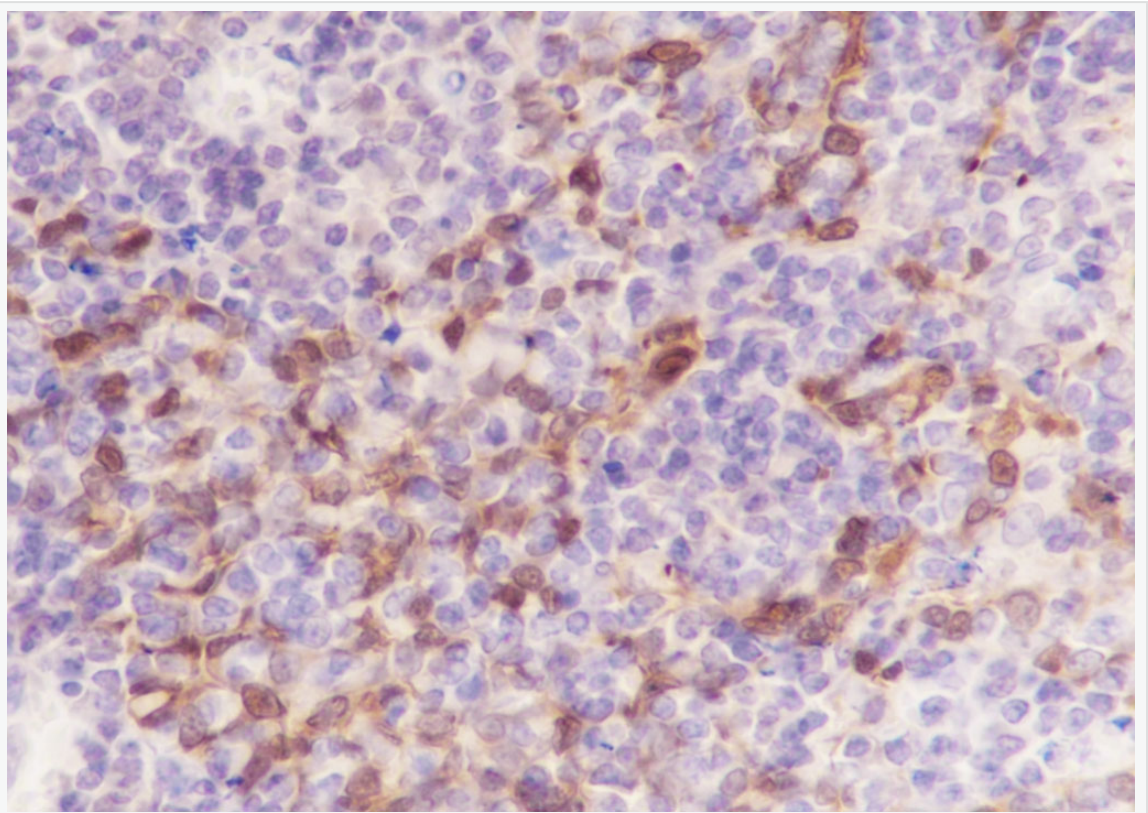
Lysate: HeLa, MCF-7

Protein loading quantity: 20 μ g

Exposure time: 60 s

Predicted MW: 28 kDa

Observed MW: 28 kDa



Tissue: Human tonsil

Section type: Formalin fixed & Paraffin -embedded section

Retrieval method: High temperature and high pressure

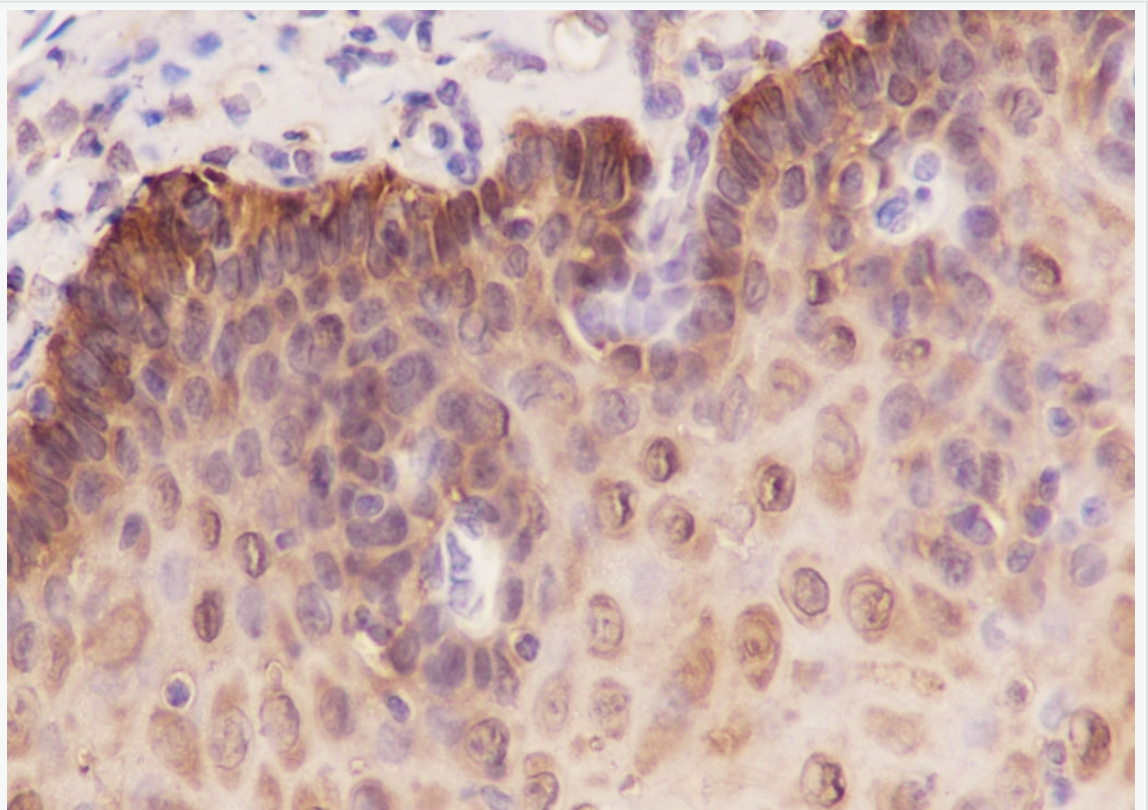
Retrieval buffer: Tris/EDTA buffer, pH 9.0 Primary ab dilution: 1:100

Primary ab incubation condition: 1 hour at room temperature

Secondary ab: SP Kit(Mouse)(sp-0024)

Counter stain: Hematoxylin (Blue)

Comment: Color brown is the positive signal for SLM-60449M



Tissue: Human esophagus

Section type: Formalin fixed & Paraffin -embedded section

Retrieval method: High temperature and high pressure



Retrieval buffer: Tris/EDTA buffer, pH 9.0 Primary ab dilution: 1:100

Primary ab incubation condition: 1 hour at room temperature

Secondary ab:SP Kit(Mouse)(sp-0024)

Counter stain: Hematoxylin (Blue)

Comment: Color brown is the positive signal for SLM-60449M