

Mouse Anti-BCAR1 antibody

SLM-60447M

Product Name BCAR1

Chinese Name

Immunogen Species Mouse

Clonality Monoclonal

Clone NO. G9G8

React Species Human

Applications WB=1:500-1000,IHC-P=1:100-500,IHC-F=1:100-500,IF=1:100-500 (Paraffin sections need antigen repair)

not yet tested in other applications.

optimal dilutions/concentrations should be determined by the end user.

Cellular localization The cell membrane

Form Liquid

Concentration 1mg/ml

Lsotype IgG2A/Kappa

Purification Affinity purified by Protein G

Buffer Solution 1M TBS(pH7.4) with 1% BSA, 3% Proclin300 and 50% Glycerol.

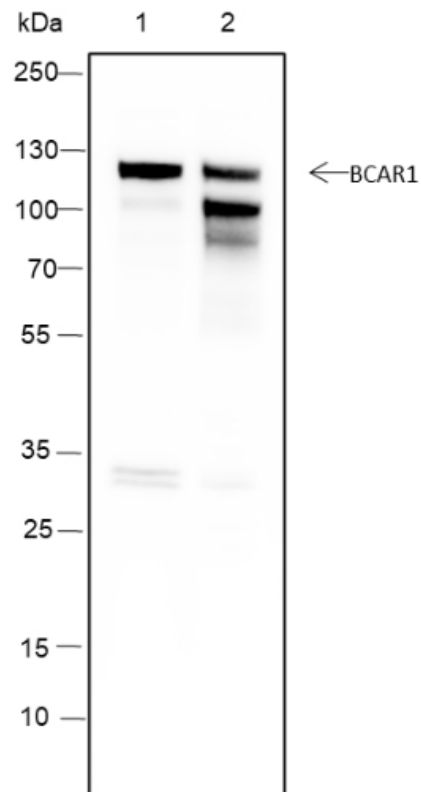
Storage Shipped at 4°C. Store at -20 °C for one year. Avoid repeated freeze/thaw cycles.

Attention This product as supplied is intended for research use only, not for use in human, therapeutic or diagnostic applications.

PubMed [PubMed](#)

Product Detail 对接蛋白，在细胞粘附相关的酪氨酸激酶信号传导中起中心协调作用。与诱导细胞迁移和细胞分支有关。也参与 BCAR3 介导的 TGFβ 信号抑制。

**Product
Picture**



Blocking buffer: 5% NFDm/TBST

Primary Ab dilution: 1:1000

Primary Ab incubation condition: room temperature 2h

Secondary Ab: Goat Anti-Mouse IgG H&L (HRP)

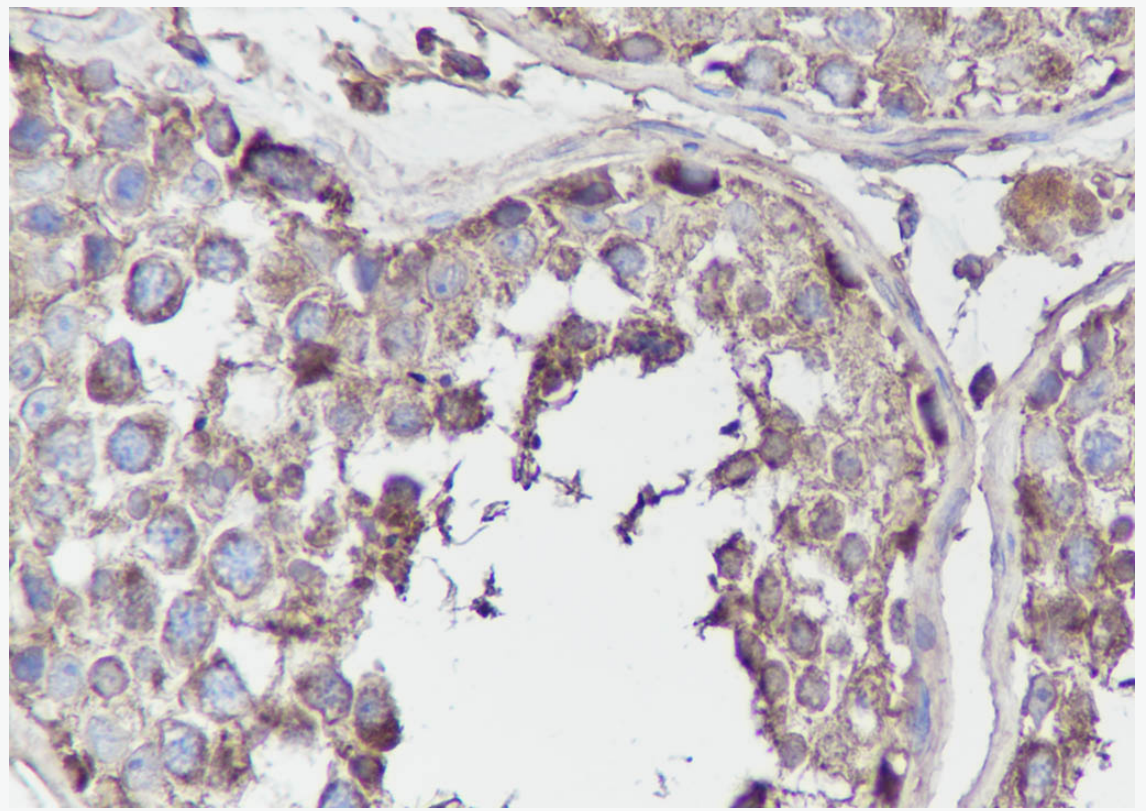
Lysate:1: HeLa, 2: MCF-7

Protein loading quantity: 20 μ g

Exposure time: 10 s

Predicted MW: 116 kDa

Observed MW: 116 kDa



Tissue: Human testis

Section type: Formalin fixed & Paraffin -embedded section

Retrieval method: High temperature and high pressure

Retrieval buffer: Tris/EDTA buffer, pH 9.0 Primary Ab dilution: 1:100

Primary Ab incubation condition: 1 hour at room temperature

Secondary Ab: SP Kit(Mouse)(sp-0024)

Counter stain: Hematoxylin (Blue)

Comment: Color brown is the positive signal for SLM-60447M