

## Rabbit Anti-ABCE1 antibody

SLM-60444R

**Product Name** ABCE1

**Chinese Name**

**Immunogen Species** Rabbit

**Clonality** Monoclonal

**Clone NO.** A12F4

**React Species** Human,Mouse,Rat

**Applications** WB=1:500-2000,ICC/IF=1:50-200,IHC-P=1:50-200,IHC-F=1:50-200,IF=1:50-200,Flow-Cyt=1  
not yet tested in other applications.  
optimal dilutions/concentrations should be determined by the end user.

**Cellular localization** The cell membrane

**Form** Liquid

**Concentration** 1mg/ml

**Lsotype** IgG/Kappa

**Purification** Affinity purified by Protein A

**Buffer Solution** 1M TBS(pH7.4) with 1% BSA, 3% Proclin300 and 50% Glycerol.

**Storage** Shipped at 4°C. Store at -20 °C for one year. Avoid repeated freeze/thaw cycles.

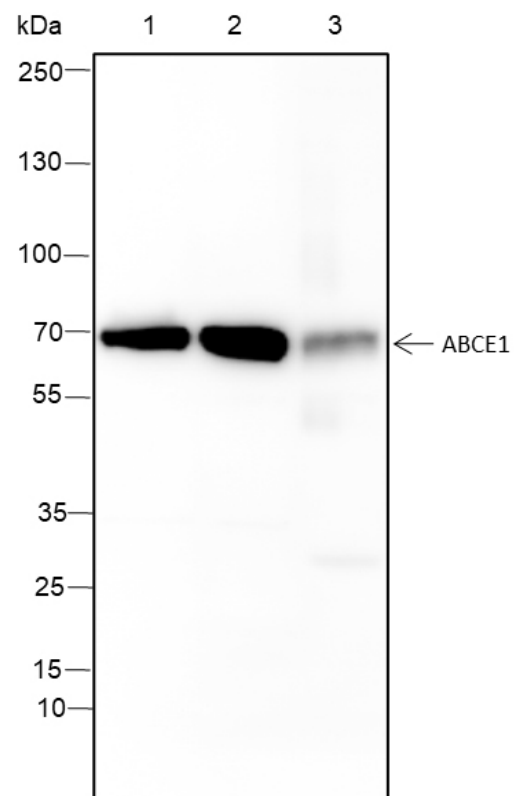
**Attention** This product as supplied is intended for research use only, not for use in human, therapeutic or diagnostic applications.

**PubMed** [PubMed](#)

**Product Detail**

共翻译质量控制因子参与了不通过衰变 (NGD) 途径。与 PELO 和 HBS1L 一起, 是 80S 核糖体解离所必需的。与 PELO 和 HBS1L 一起识别停滞的核糖体并促进 mRNA 上的延伸复合物的解离, 这触发了 mRNA 的核内裂解, 这是一种释放非功能性核糖体的机制, 是 No-Go 衰变 (NGD) 途径的一部分。在 mRNA 周转的调控中起作用, 在外膜定位 mRNA 翻译的质量控制中起作用。作为 PINK1 调控信号的一部分, 在 Mitochondrion 裂解中起作用。RNASEL 特异性蛋白抑制剂, 拮抗 2-5A (5'-磷酸化 2', 5'-连接的寡腺苷酸) 与 Interferon 调节的 2-5A/RNASEL 途径抗病毒作用的负调节因子。

**Product  
Picture**



Blocking buffer: 5% NFDM/TBST

Primary ab dilution: 1:1000

Primary ab incubation condition: room temperature 2h

Secondary ab: Goat Anti-Rabbit IgG H&L (HRP)

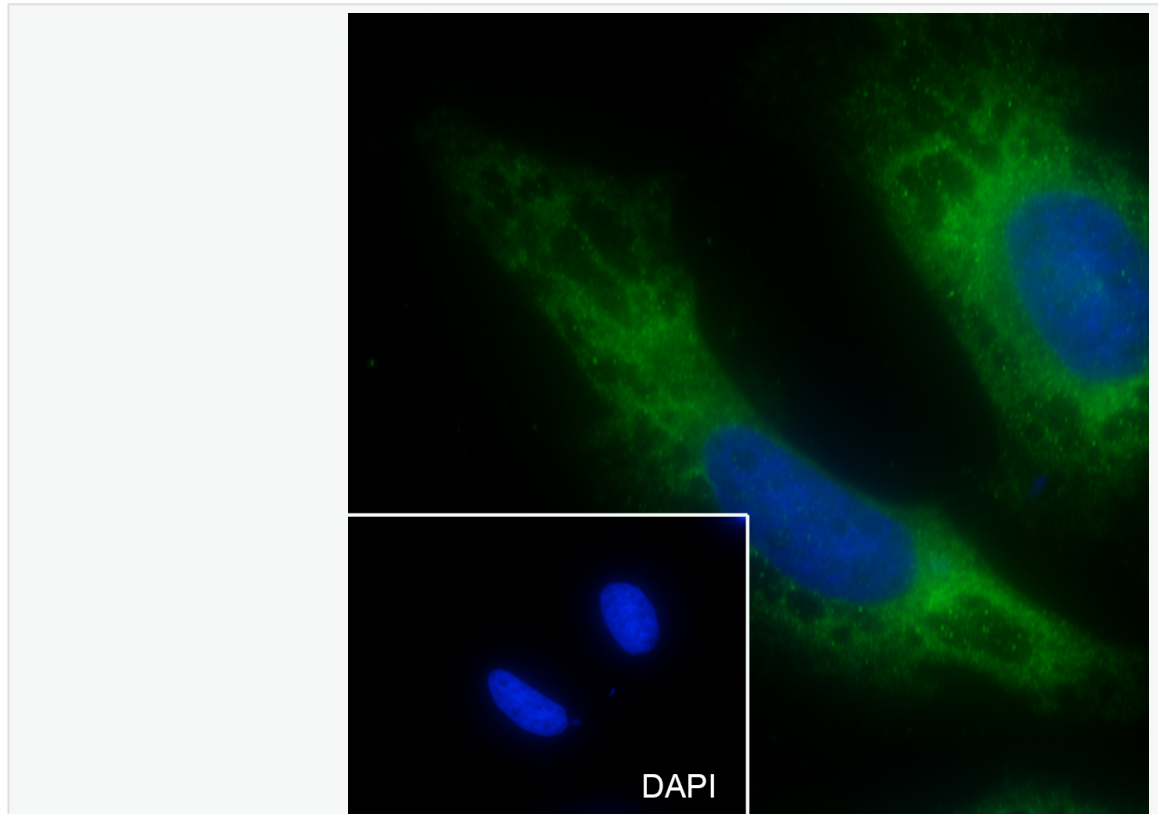
Lysate: 1:HeLa, 2: Panc-1, 3: Mouse liver

Protein loading quantity: 20  $\mu$ g

Exposure time: 10 s

Predicted MW: 67 kDa

Observed MW: 67 kDa



Cell line: HeLa

Fixative: 4% Paraformaldehyde

Permeabilization: 0.1% TritonX-100

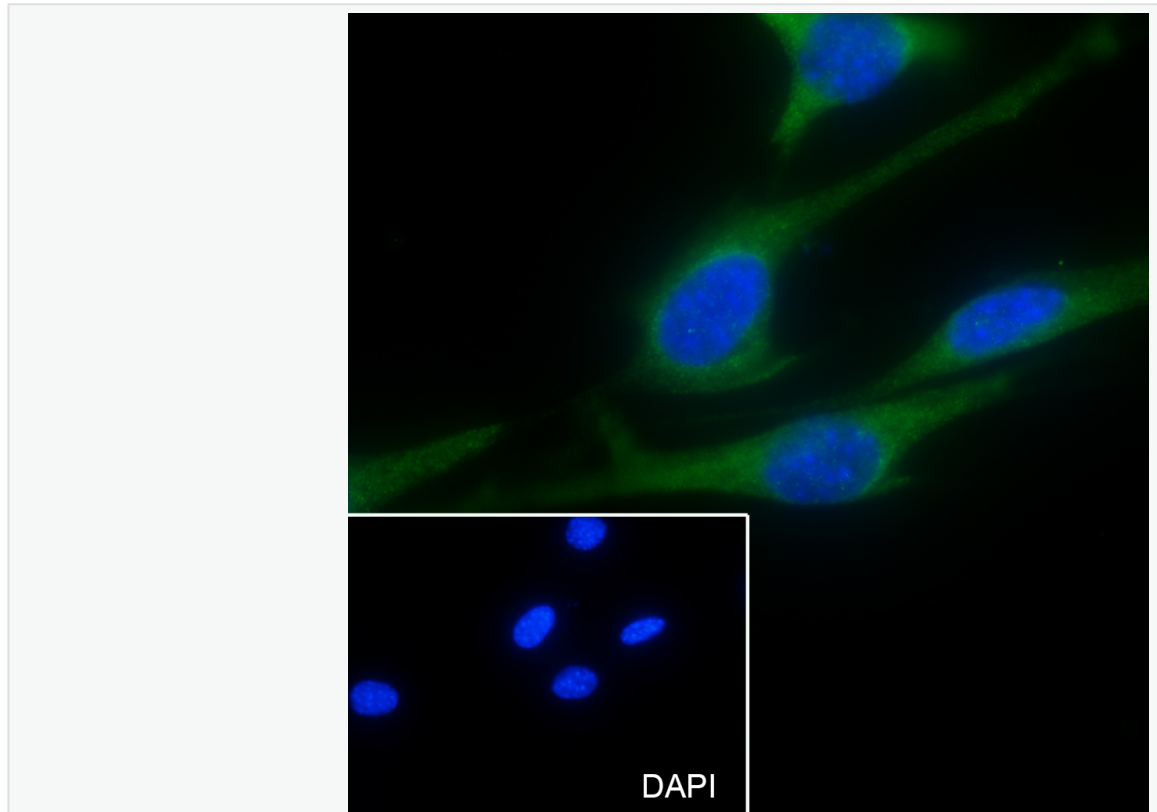
Primary ab dilution: 1:50

Primary incubation condition: 4°C overnight

Secondary ab: Goat Anti-Rabbit IgG

Nuclear counter stain: DAPI (Blue)

Comment: Color green is the positive signal for SLM-60444R



Cell line: NIH-3T3

Fixative: 4% Paraformaldehyde

Permeabilization: 0.1% TritonX-100

Primary ab dilution: 1:50

Primary incubation condition: 4°C overnight

Secondary ab: Goat Anti-Rabbit IgG

Nuclear counter stain: DAPI (Blue)

Comment: Color green is the positive signal for SLM-60444R