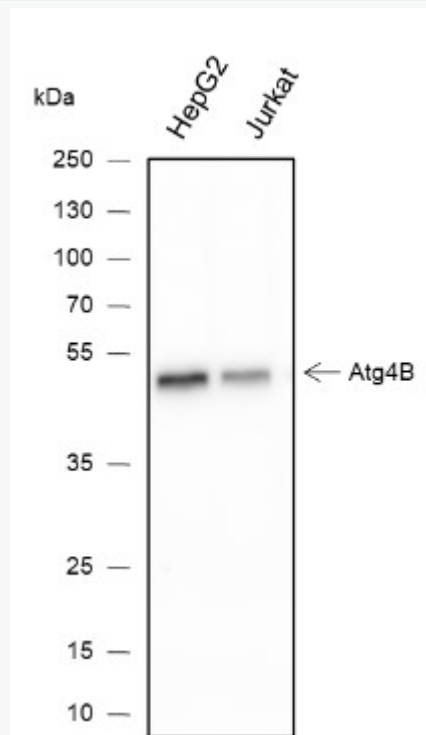


Rabbit Anti-PTGER2 antibody

SLM-60443R

Product Name	PTGER2
Chinese Name	
Immunogen Species	Rabbit
Clonality	Monoclonal
Clone NO.	C11G4
React Species	Human(predicted:Mouse) WB=1:500-1000,ICC/IF=1:100-500
Applications	not yet tested in other applications. optimal dilutions/concentrations should be determined by the end user.
Cellular localization	The cell membrane
Form	Liquid
Concentration	1mg/ml
Lsotype	IgG/Kappa
Purification	Affinity purified by Protein A
Buffer Solution	1M TBS(pH7.4) with 1% BSA, 3% Proclin300 and 50% Glycerol.
Storage	Shipped at 4°C. Store at -20 °C for one year. Avoid repeated freeze/thaw cycles.
Attention	This product as supplied is intended for research use only, not for use in human, therapeutic or diagnostic applications.
PubMed	PubMed
Product Detail	半胱氨酸蛋白酶，细胞质到液泡运输（Cvt）和自噬所需的半胱氨酸蛋白酶。将 ATG8 家族蛋白 MAP1LC3、GABARAPL1、GABARAPL2 和 GABARAP 的 C 端氨基酸裂解，从而揭示 C 端甘氨酸。在 C 端暴露甘氨酸对 ATG8 蛋白与磷脂酰乙醇胺（PE）结合和膜的插入是必不可少的，而这是自噬所必需的。



Product Picture

Blocking buffer: 5% NFDM/TBST

Primary ab dilution: 1:1000

Primary ab incubation condition: 4°C overnight

Secondary ab: Goat Anti-Rabbit IgG H&L (HRP)

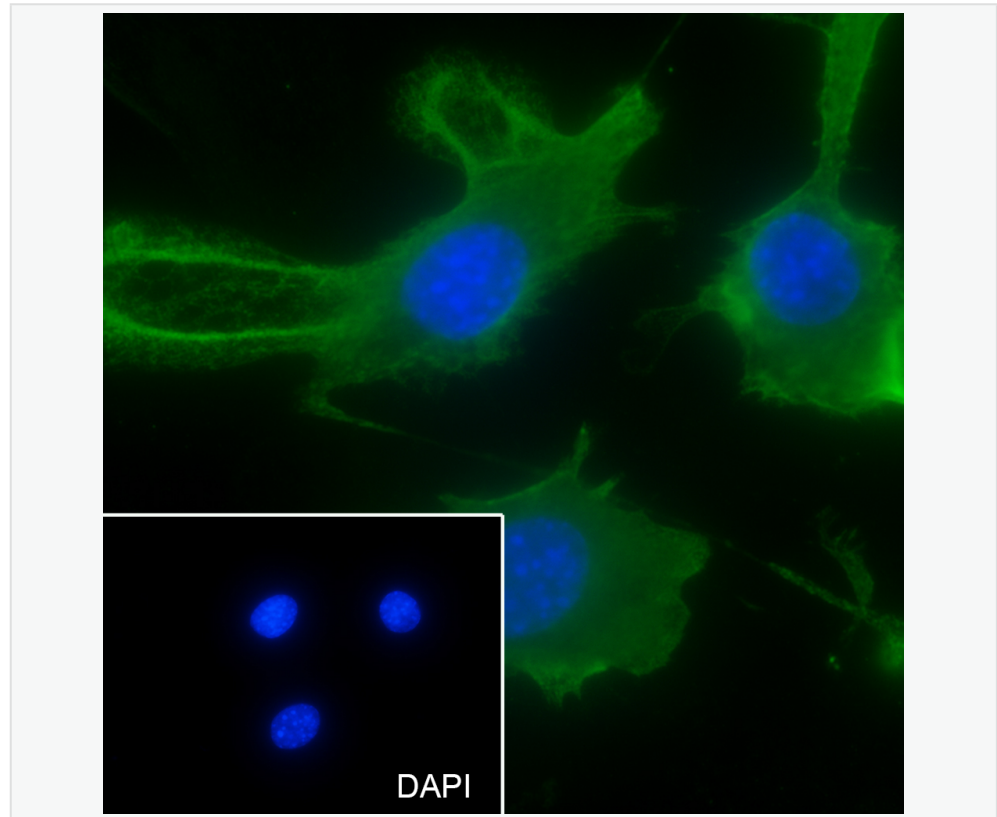
Lysate: HepG2, Jurkat

Protein loading quantity: 20 µg

Exposure time: 60 s

Predicted MW: 48 kDa

Observed MW: 48 kDa



Cell line: NIH-3T3

Fixative: 4% Paraformaldehyde

Permeabilization: 0.1% TritonX-100

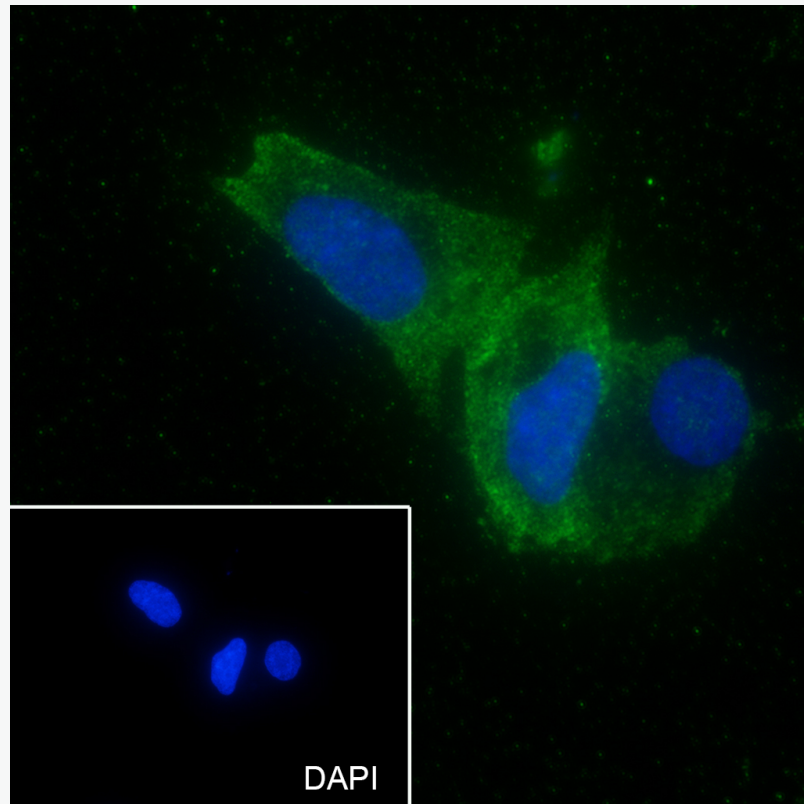
Primary ab dilution: 1:50

Primary incubation condition: 4°C overnight

Secondary ab: Goat Anti-Mouse IgG

Nuclear counter stain: DAPI (Blue)

Comment: Color green is the positive signal for SLM-60443R



Cell line: HepG2

Fixative: 100% Ice-cold methanol

Permeabilization: 0.1% TritonX-100

Primary ab dilution: 1:50

Primary incubation condition: 4°C overnight

Secondary ab: Goat Anti-Mouse IgG

Nuclear counter stain: DAPI (Blue)

Comment: Color green is the positive signal for SLM-60443R