

Rabbit Anti-RPSA antibody

SLM-60441R

Product Name	RPSA
Chinese Name	层粘连蛋白受体 1Recombinant rabbit monoclonal anti
Alias	67kDa Laminin Receptor; 37LRP; P37-kDa laminin receptor precursor; MGr1-Ag; laminin receptor 1; 67kD, ribosomal protein SA; 34/67 kDa laminin receptor; 40S ribosomal protein SA; 67LR; Colon carcinoma laminin-binding protein; LAMBR; Laminin Receptor 1; LAMR 1; LAMR1; LRP; Multidrug resistance-associated protein MGr1-Ag; NEM/1CHD4; p40; Ribosomal Protein SA; 67kD laminin receptor; Laminin Receptor 1; Laminin R1; LNR1; RSSA_HUMAN.
Research Area	Chromatin and nuclear signals transcriptional regulatory factor
Immunogen Species	Rabbit
Clonality	Monoclonal
Clone NO.	6HD2
React Species	Human,Mouse
Applications	WB=1:500-2000,ICC/IF=1:100-500 (Paraffin sections need antigen repair) not yet tested in other applications. optimal dilutions/concentrations should be determined by the end user.
Theoretical molecular weight	32.7kDa
Cellular localization	The nucleus cytoplasmic The cell membrane Extracellular matrix
Form	Liquid
Concentration	1mg/ml
immunogen	KLH conjugated synthetic peptide derived from human RPSA
Lsotype	IgG
Purification	affinity purified by Protein A
Buffer Solution	1M TBS(pH7.4) with 1% BSA, 3% Proclin300 and 50% Glycerol.
Storage	Shipped at 4°C. Store at -20 °C for one year. Avoid repeated freeze/thaw cycles.
Attention	This product as supplied is intended for research use only, not for use in

human, therapeutic or diagnostic applications.

PubMed

[PubMed](#)

Laminins, a family of extracellular matrix glycoproteins, are the major noncollagenous constituent of basement membranes. They have been implicated in a wide variety of biological processes including cell adhesion, differentiation, migration, signaling, neurite outgrowth and metastasis. Many of the effects of laminin are mediated through interactions with cell surface receptors. These receptors include members of the integrin family, as well as non-integrin laminin-binding proteins. This gene encodes a high-affinity, non-integrin family, laminin receptor 1. This receptor has been variously called 67 kD laminin receptor, 37 kD laminin receptor precursor (37LRP) and p40 ribosome-associated protein. The amino acid sequence of laminin receptor 1 is highly conserved through evolution, suggesting a key biological function. It has been observed that the level of the laminin receptor transcript is higher in colon carcinoma tissue and lung cancer cell line than their normal counterparts. Also, there is a correlation between the upregulation of this polypeptide in cancer cells and their invasive and metastatic phenotype. Multiple copies of this gene exist, however, most of them are pseudogenes thought to have arisen from retropositional events. Two alternatively spliced transcript variants encoding the same protein have been found for this gene. [provided by RefSeq, Jul 2008]

Product Detail

SWISS:
P08865

Gene ID:
3921

Database links:

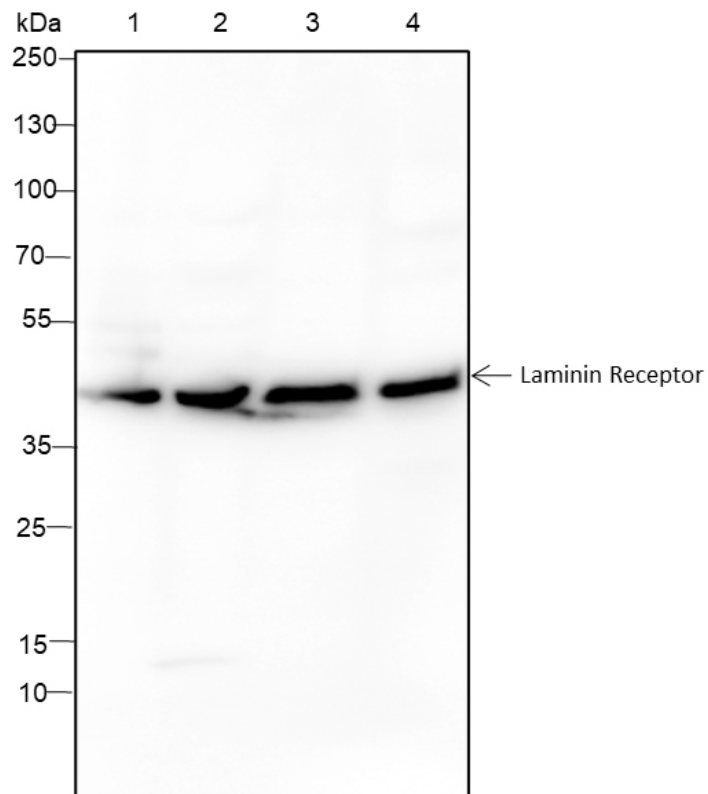
[Entrez Gene: 3921](#) Human

[Entrez Gene: 16785](#) Mouse

[SwissProt: P08865](#) Human

[SwissProt: P14206](#) Mouse

Product Picture



Blocking buffer: 5% NFDm/TBST

Primary ab dilution: 1:5000

Primary ab incubation condition: room temperature 2h

Secondary ab: Goat Anti-Rabbit IgG H&L (HRP)

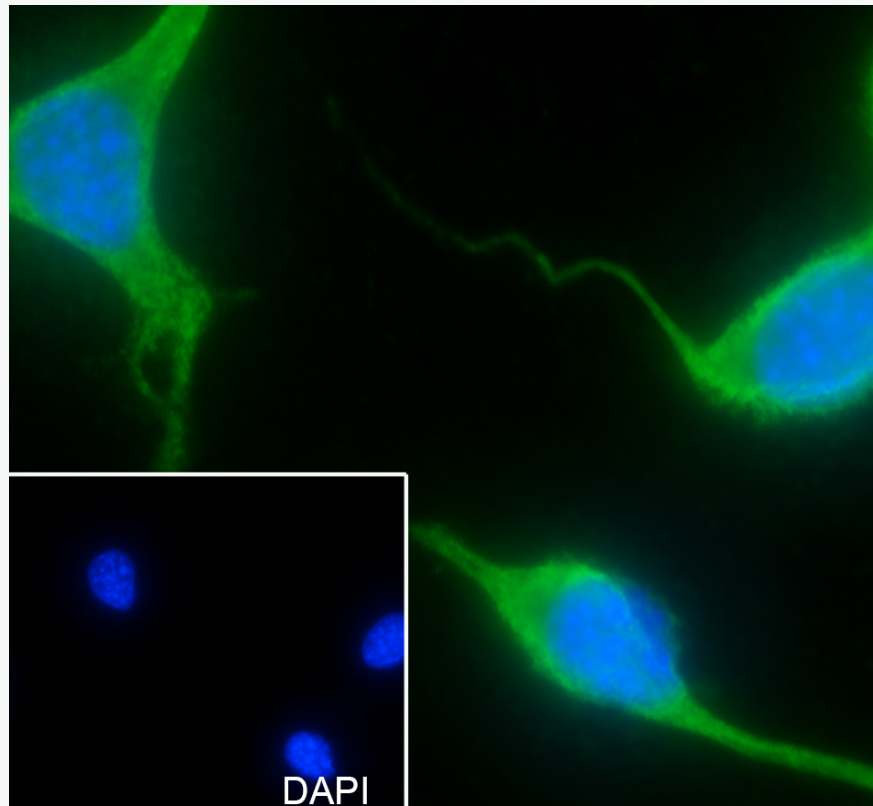
Lysate: 1: HeLa, 2: Panc-1, 3: PC-12, 4: NIH/3T3

Protein loading quantity: 20 μ g

Exposure time: 10 s

Predicted MW: 45 kDa

Observed MW: 45 kDa



Cell line: NIH-3T3 Fixative: 100% Ice-cold methanol Permeabilization:
0.1% TritonX-100 Primary ab dilution: 1:50 Primary incubation
condition: 4°C overnight Secondary ab: Goat Anti-Rabbit IgG Nuclear
counter stain: DAPI (Blue) Comment: Color green is the positive signal
for SLM-60441R