

## Rabbit Anti-CDH17 / LI-cadherin antibody

SLM-60434R

<b>Product Name</b>	CDH17 / LI-cadherin
<b>Chinese Name</b>	肝肠钙粘连蛋白 Recombinant rabbit monoclonal anti
<b>Alias</b>	CAD17_HUMAN; Cadherin-17; CDH17; Intestinal peptide-associated transporter HPT-1; Liver-intestine cadherin (LI-cadherin); HPT1; CDH16; HPT-1;
<b>Research Area</b>	immunology Cytoskeleton
<b>Immunogen Species</b>	Rabbit
<b>Clonality</b>	Monoclonal
<b>Clone NO.</b>	B5A7
<b>React Species</b>	Human,Mouse,Rat IHC-P=1:100-500,IHC-F=1:100-500,IF=1:100-500,WB=1:500-2000 (Paraffin sections need antigen repair)
<b>Applications</b>	not yet tested in other applications. optimal dilutions/concentrations should be determined by the end user.
<b>Theoretical molecular weight</b>	90kDa
<b>Cellular localization</b>	The cell membrane
<b>Form</b>	Liquid
<b>Concentration</b>	1mg/ml
<b>Lsotype</b>	IgG
<b>Purification</b>	Affinity purified by Protein A
<b>Buffer Solution</b>	1M TBS(pH7.4) with 1% BSA, 3% Proclin300 and 50% Glycerol.
<b>Storage</b>	Shipped at 4°C. Store at -20 °C for one year. Avoid repeated freeze/thaw cycles.
<b>Attention</b>	This product as supplied is intended for research use only, not for use in human, therapeutic or diagnostic applications.
<b>PubMed</b>	<a href="#">PubMed</a>
<b>Product</b>	This gene is a member of the cadherin superfamily, genes encoding calcium-dependent,

## Detail

membrane-associated glycoproteins. The encoded protein is cadherin-like, consisting of an extracellular region, containing 7 cadherin domains, and a transmembrane region but lacking the conserved cytoplasmic domain. The protein is a component of the gastrointestinal tract and pancreatic ducts, acting as an intestinal proton-dependent peptide transporter in the first step in oral absorption of many medically important peptide-based drugs. The protein may also play a role in the morphological organization of liver and intestine. Alternative splicing results in multiple transcript variants. [provided by RefSeq, Jan 2009]

**SWISS:**  
Q12864

**Gene ID:**  
1015

### Database links:

[Entrez Gene: 1015](#) Human

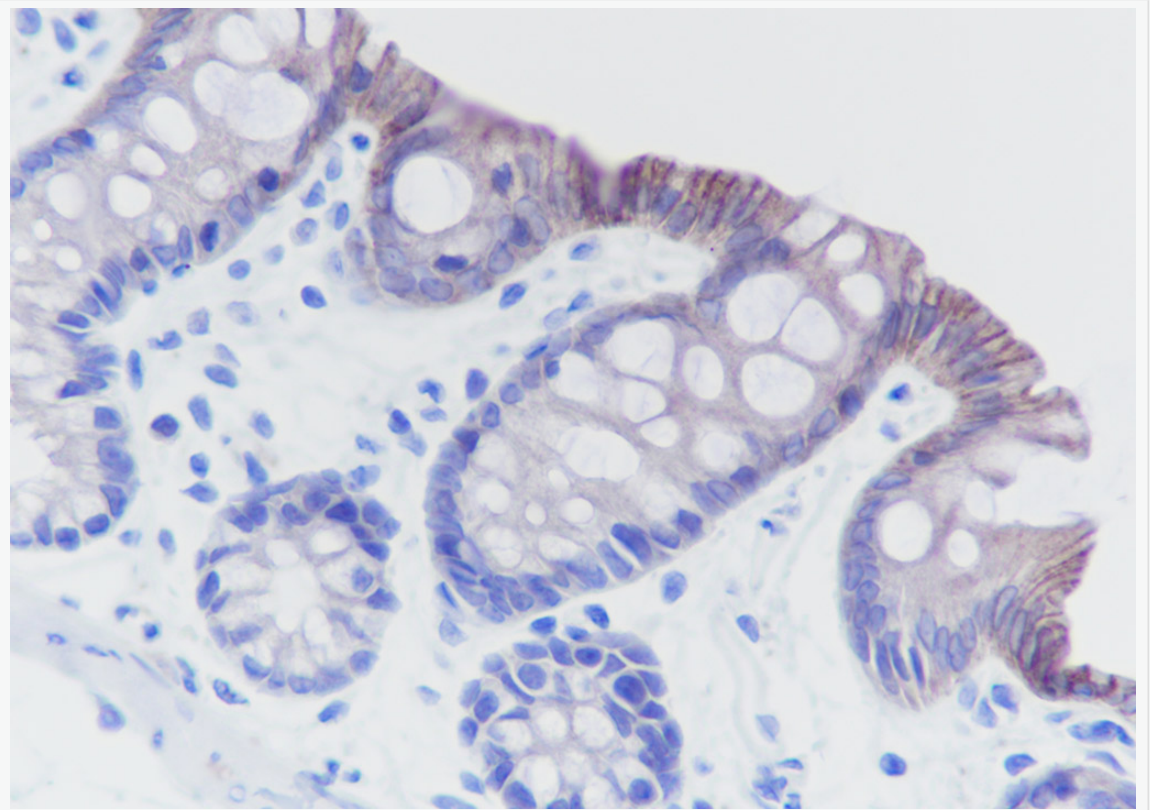
[Omim: 603017](#) Human

[SwissProt: Q12864](#) Human

[Unigene: 591853](#) Human

Cadherin 家族，即钙离子依赖的细胞粘附素家族，是 Takeichi 最早发现的一种介导细胞间相互聚集的粘附分子，对生长发育过程中细胞的选择性聚集具有至关重要的作用。

**Product  
Picture**



Tissue: Rat colon

Section type: Formalin fixed & Paraffin -embedded section

Retrieval method: High temperature and high pressure

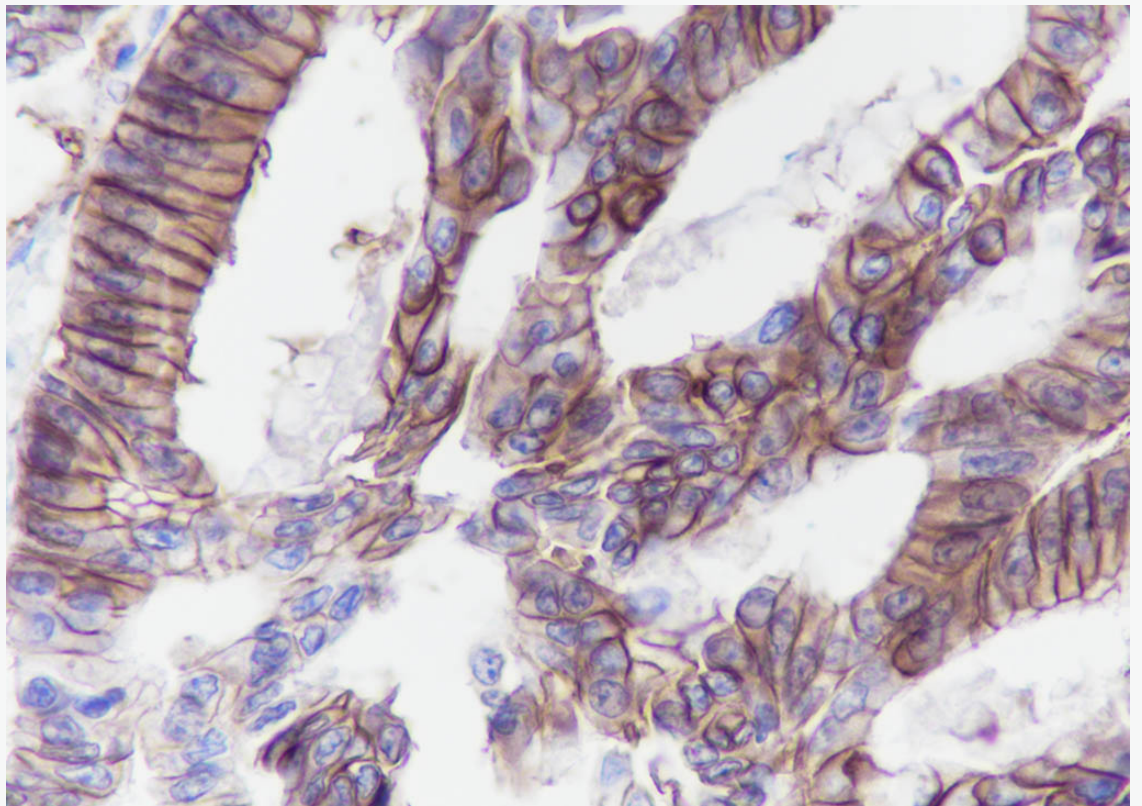
Retrieval buffer: Tris/EDTA buffer, pH 9.0 Primary ab dilution: 1:1000

Primary ab incubation condition: 1 hour at room temperature

Secondary ab: SP Kit(Rabbit) (sp-0023)

Counter stain: Hematoxylin (Blue)

Comment: Color brown is the positive signal for SLM-60434R



Tissue: Human colon cancer

Section type: Formalin fixed & Paraffin -embedded section

Retrieval method: High temperature and high pressure

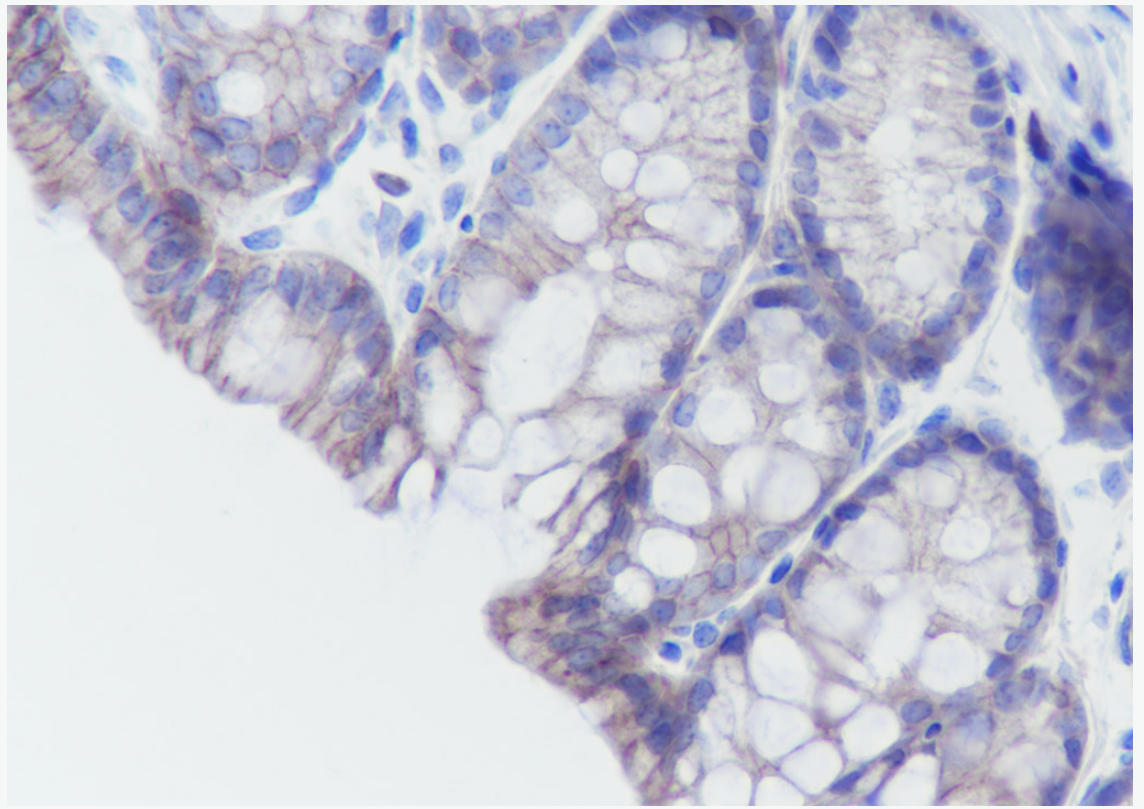
Retrieval buffer: Tris/EDTA buffer, pH 9.0 Primary ab dilution: 1:100

Primary ab incubation condition: 1 hour at room temperature

Secondary ab: SP Kit(Rabbit) (sp-0023)

Counter stain: Hematoxylin (Blue)

Comment: Color brown is the positive signal for SLM-60434R



Tissue: Mouse colon

Section type: Formalin fixed & Paraffin -embedded section

Retrieval method: High temperature and high pressure

Retrieval buffer: Tris/EDTA buffer, pH 9.0 Primary ab dilution: 1:1000

Primary ab incubation condition: 1 hour at room temperature

Secondary ab: SP Kit(Rabbit) (sp-0023)

Counter stain: Hematoxylin (Blue)

Comment: Color brown is the positive signal for SLM-60434R