

Rabbit Anti-CLDN1 antibody

SLM-60433R

Product Name CLDN1

Chinese Name 紧密连接蛋白 1Recombinant rabbit monoclonal anti

Alias CLD1_HUMAN; Claudin-1; Claudin 1; Claudin1; CLD1; SEMP1; Senescence-associated epithelial membrane protein; UNQ481/PRO944; ILVASC;

Immunogen Species Rabbit

Clonality Monoclonal

Clone NO. B5D10

React Species Human,Mouse

WB=1:500-2000 (Paraffin sections need antigen repair)

Applications not yet tested in other applications.
optimal dilutions/concentrations should be determined by the end user.

Cellular localization cytoplasmic

Form Liquid

Concentration 1mg/ml

Lsotype IgG

Purification Affinity purified by Protein A

Buffer Solution 1M TBS(pH7.4) with 1% BSA, 3% Proclin300 and 50% Glycerol.

Storage Shipped at 4°C. Store at -20 °C for one year. Avoid repeated freeze/thaw cycles.

Attention This product as supplied is intended for research use only, not for use in human, therapeutic or diagnostic applications.

PubMed [PubMed](#)

Product Detail

Tight junctions represent one mode of cell-to-cell adhesion in epithelial or endothelial cell sheets, forming continuous seals around cells and serving as a physical barrier to prevent solutes and water from passing freely through the paracellular space. These junctions are comprised of sets of continuous networking strands in the outwardly facing cytoplasmic leaflet, with complementary grooves in the inwardly facing extracytoplasmic leaflet. The protein encoded by this gene, a member of the claudin family, is an integral membrane protein and a component of tight junction strands. Loss of function mutations result in neonatal ichthyosis-sclerosing cholangitis syndrome. [provided by RefSeq, Jul 2008]

Subcellular Location:

Cell junction, tight junction. Cell membrane; Multi-pass membrane protein.

Tissue Specificity:

Widely expressed, with highest levels in liver and kidney.

SWISS:

O95832

Gene ID:

9076

Database links:

[Entrez Gene: 9076](#) Human

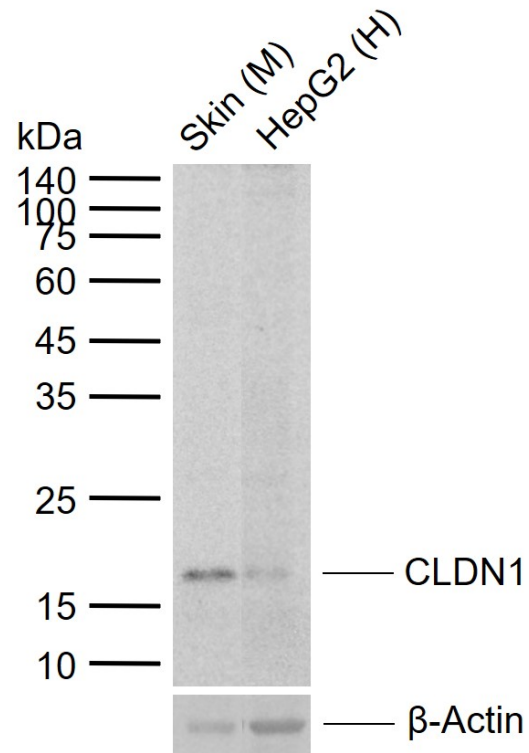
[Entrez Gene: 12737](#) Mouse

[SwissProt: O95832](#) Human

[SwissProt: O88551](#) Mouse

claudins 充当紧密连接复合物的主要成分，该紧密连接复合物调节上皮的通透性。尽管某些 claudin 家族成员在不可渗透屏障的形成中起着至关重要的作用，但其他一些介导了对离子和小分子的渗透性。通常，几个 claudin 家族成员会共表达并相互影响，这决定了总体渗透性。CLDN1 是必需的，可防止小分子通过表皮中的紧密连接发生旁细胞扩散，而 CLDN1 是皮肤的正常屏障功能所必需的。正常的水体内平衡和防止水通过皮肤过多流失可能是必需的，这可能是通过间接影响其他蛋白质的表达水平来实现的，因为 CLDN1 本身似乎对角质形成细胞紧密连接中的水屏障形成不可或缺。

**Product
Picture**



Sample:

Lane 1: Mouse Skin tissue lysates

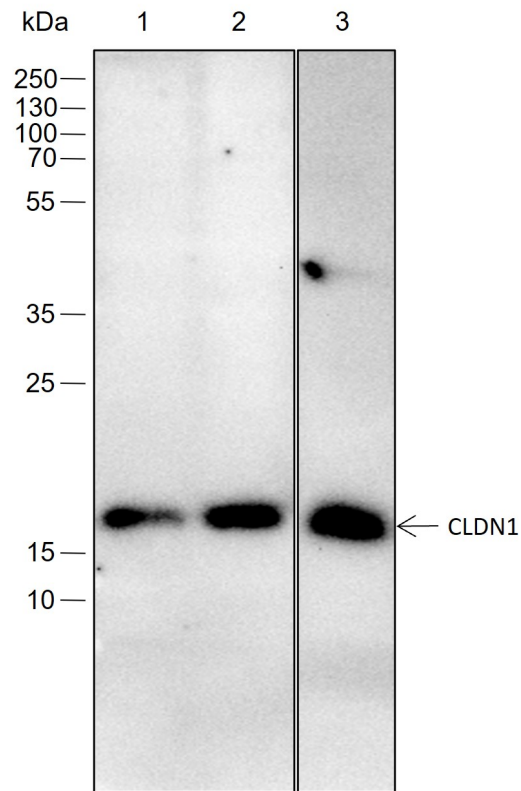
Lane 2: Human HepG2 cell lysates

Primary: Anti-CLDN1 (SLM-60433R) at 1/1000 dilution

Secondary: IRDye800CW Goat Anti-Rabbit IgG at 1/20000 dilution

Predicted band size: kDa

Observed band size: 18 kDa



Blocking buffer: 5% NFDN/TBST

Primary ab dilution: 1:2000

Primary ab incubation condition: 2 hours at room temperature

Secondary ab: Goat Anti-Rabbit IgG H&L (HRP)

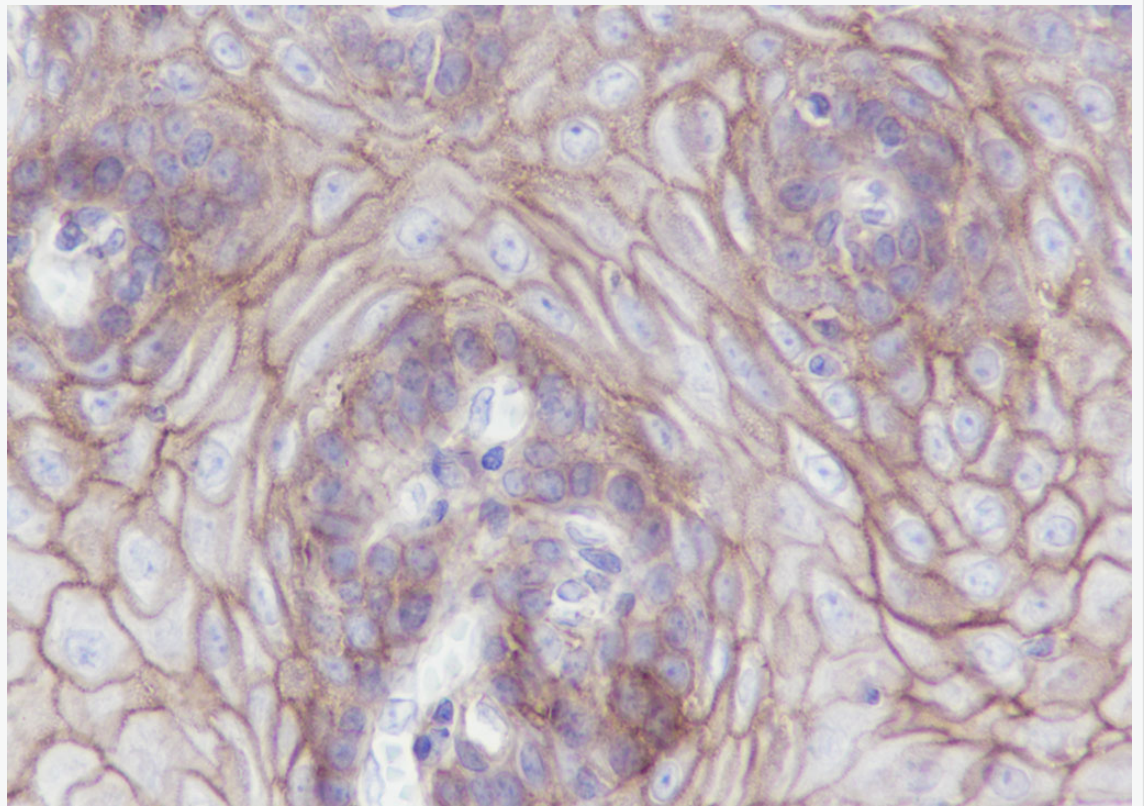
Lysate: 1: HepG2, 2: A431, 3: Mouse liver

Protein loading quantity: 20 μ g

Exposure time: 60 s

Predicted MW: 22 kDa

Observed MW: 18 kDa



Tissue: Human esophagus

Section type: Formalin fixed & Paraffin -embedded section

Retrieval method: High temperature and high pressure

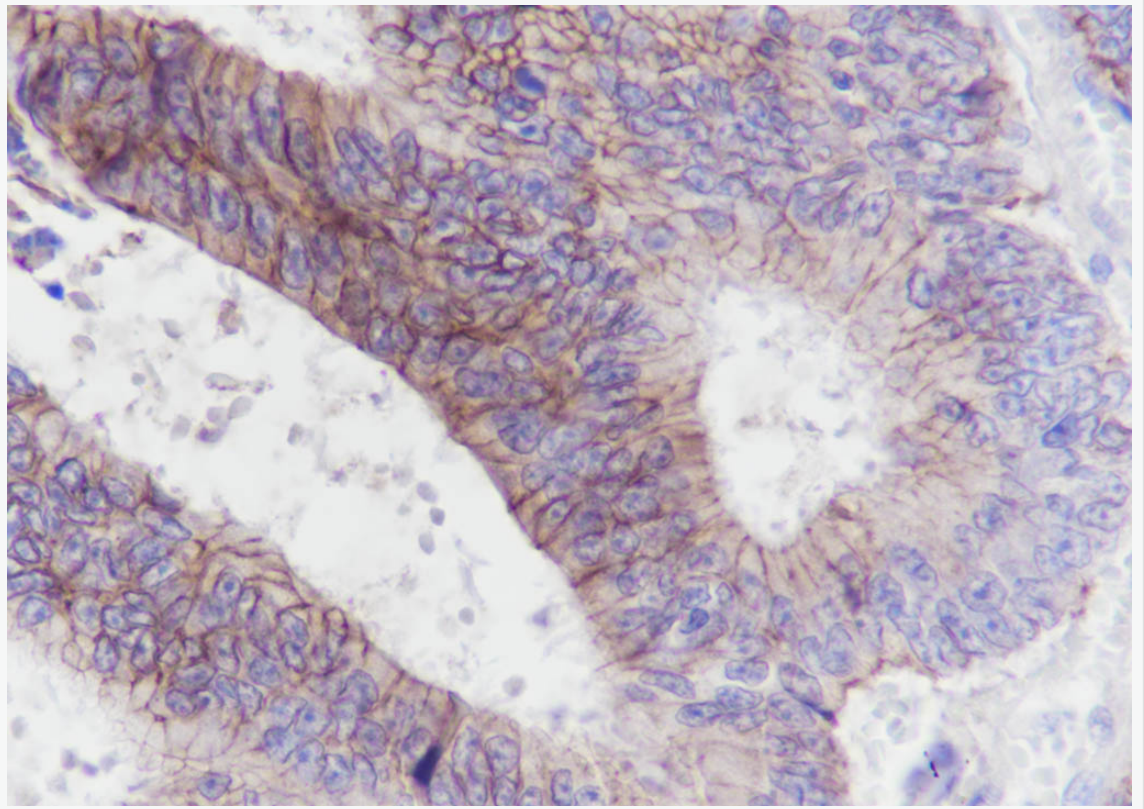
Retrieval buffer: Tris/EDTA buffer, pH 9.0 Primary ab dilution: 1:100

Primary ab incubation condition: 1 hour at room temperature

Secondary ab: SP Kit(Rabbit) (sp-0023)

Counter stain: Hematoxylin (Blue)

Comment: Color brown is the positive signal for SLM-60433R



Tissue: Human colon cancer

Section type: Formalin fixed & Paraffin -embedded section

Retrieval method: High temperature and high pressure

Retrieval buffer: Tris/EDTA buffer, pH 9.0 Primary ab dilution: 1:100

Primary ab incubation condition: 1 hour at room temperature

Secondary ab: SP Kit(Rabbit) (sp-0023)

Counter stain: Hematoxylin (Blue)

Comment: Color brown is the positive signal for SLM-60433R