

Rabbit Anti-TSHB antibody

SLM-60432R

Product Name TSHB

Chinese Name 促甲状腺素 β 亚单位 Recombinant rabbit monoclonal anti

Alias TSHB_HUMAN; Thyrotropin subunit beta; Thyroid-stimulating hormone subunit beta (TSH-B; TSH-beta); Thyrotropin beta chain; Thyrotropin alfa; TSH- β ;

Immunogen Species Rabbit

Clonality Monoclonal

Clone NO. D7C6

React Species Rat

Applications WB=1:500-2000,IHC-P=1:100-500,IHC-F=1:100-500,IF=1:100-500 (Paraffin sections need antigen repair)
not yet tested in other applications.
optimal dilutions/concentrations should be determined by the end user.

Theoretical molecular weight 12kDa

Cellular localization The cell membrane

Form Liquid

Concentration 1mg/ml

Lsotype IgG

Purification Affinity purified by Protein A

Buffer Solution 1M TBS(pH7.4) with 1% BSA, 3% Proclin300 and 50% Glycerol.

Storage Shipped at 4°C. Store at -20 °C for one year. Avoid repeated freeze/thaw cycles.

Attention This product as supplied is intended for research use only, not for use in human, therapeutic or diagnostic applications.

PubMed [PubMed](#)

Product Detail The four human glycoprotein hormones chorionic gonadotropin (CG), luteinizing hormone (LH), follicle stimulating hormone (FSH), and thyroid stimulating hormone (TSH) are dimers consisting of alpha and beta subunits that are associated noncovalently. The alpha

subunits of these hormones are identical, however, their beta chains are unique and confer biological specificity. Thyroid stimulating hormone functions in the control of thyroid structure and metabolism. The protein encoded by this gene is the beta subunit of thyroid stimulating hormone. Mutations in this gene are associated with congenital central and secondary hypothyroidism and Hashimoto's thyroiditis. Alternative splicing of this gene results in multiple transcript variants. [provided by RefSeq, May 2013]

Subcellular Location:

Secreted.

SWISS:

P01222

Gene ID:

7252

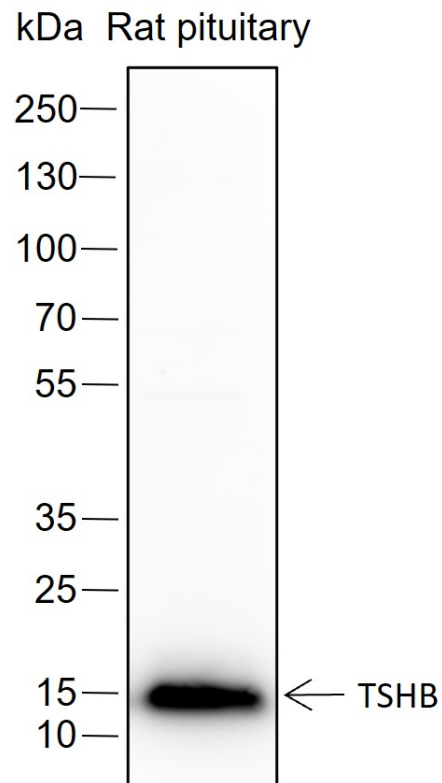
Database links:

[Entrez Gene: 7252](#) Human

[SwissProt: P01222](#) Human

TSHB（甲状腺刺激激素亚基 Beta）是一种蛋白质编码基因。与 TSHB 相关的疾病包括甲状腺功能减退，先天性，非甲状腺功能减退 4 和中枢性先天性甲状腺功能减退。其相关途径包括通过 GPCR 进行信号传递和肽激素代谢。与该基因相关的基因本体论（GO）注释包括激素活性。该基因的重要旁系同源物是 FSHB。

**Product
Picture**



Blocking buffer: 5% NFDM/TBST

Primary ab dilution: 1:2000

Primary ab incubation condition: 2 hours at room temperature

Secondary ab: Goat Anti-Rabbit IgG H&L (HRP)

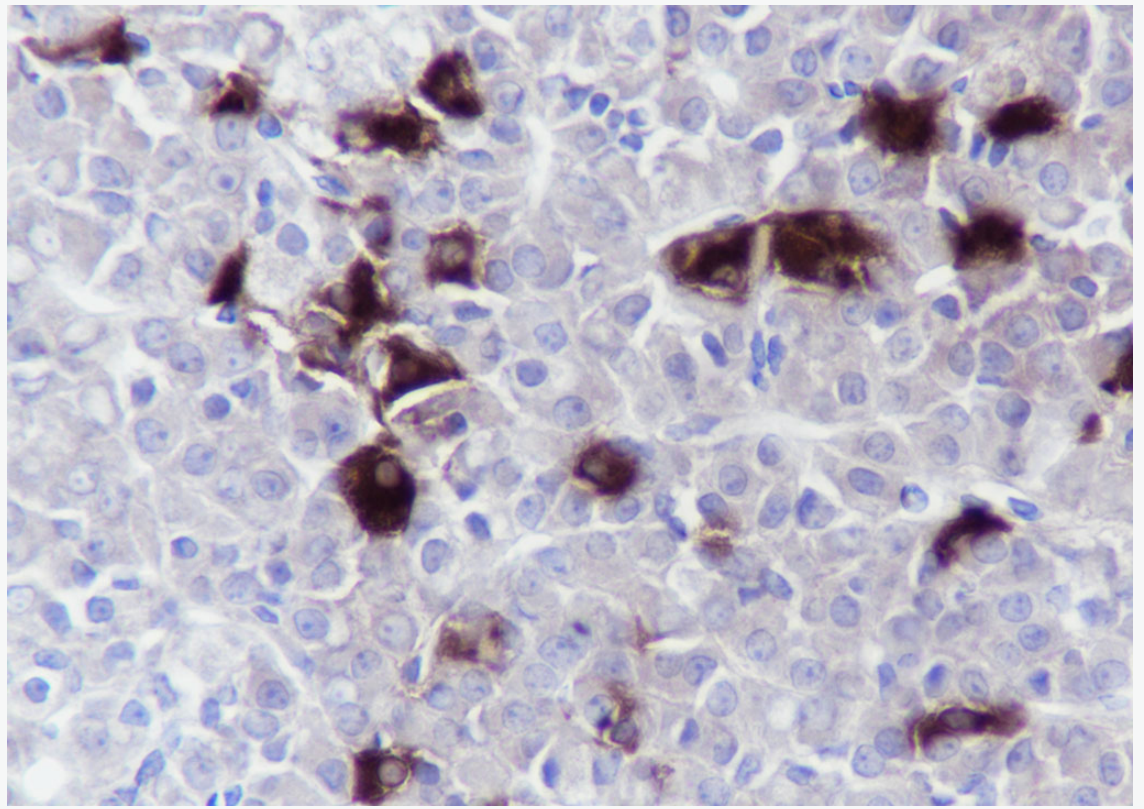
Lysate: Rat pituitary

Protein loading quantity: 20 μ g

Exposure time: 60 s

Predicted MW: 16 kDa

Observed MW: 16 kDa



Tissue: Rat pituitary

Section type: Formalin fixed & Paraffin -embedded section

Retrieval method: High temperature and high pressure

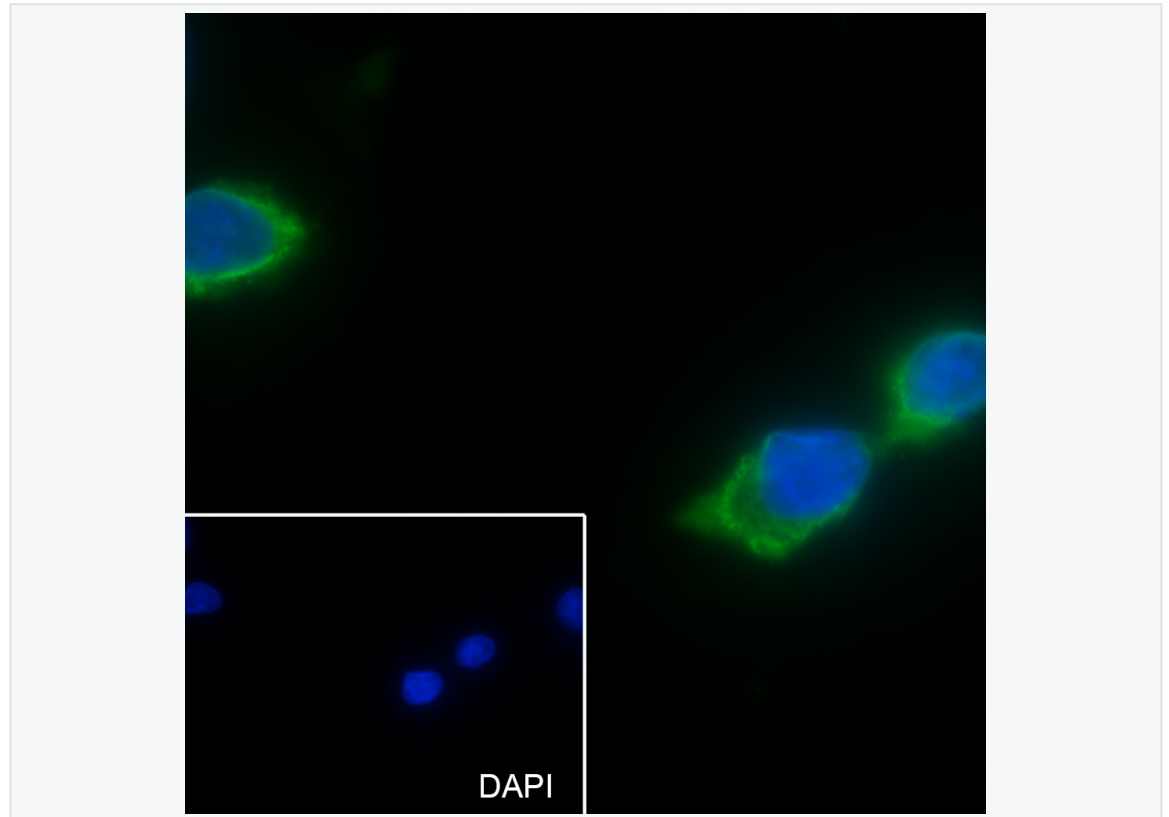
Retrieval buffer: Tris/EDTA buffer, pH 9.0 Primary ab dilution: 1:500

Primary ab incubation condition: 1 hour at room temperature

Secondary ab: SP Kit(Rabbit) (sp-0023)

Counter stain: Hematoxylin (Blue)

Comment: Color brown is the positive signal for SLM-60432R



Cell line: U-2 OS

Fixative: 100% methanol

Permeabilization: 0.1% TritonX-100

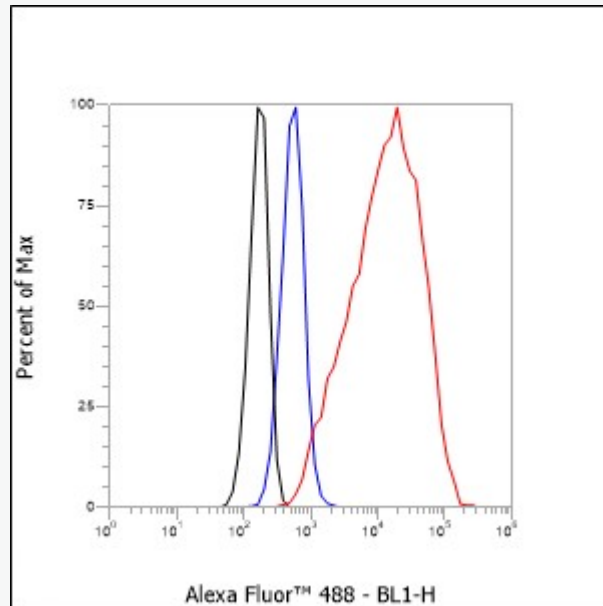
Primary ab dilution: 1:50

Primary incubation condition: 4°C overnight

Secondary ab: Goat Anti-Rabbit IgG

Nuclear counter stain: DAPI (Blue)

Comment: Color green is the positive signal for SLM-60432R



Cell line: HeLa

Fixative: 4% Paraformaldehyde

Permeabilization: 90% Methanol

Primary ab dilution: 1:100

Secondary ab: Goat anti Rabbit IgG

Unlabelled control: The cell without incubation with primary antibody and secondary antibody (Black line).

Isotype control: Rabbit monoclonal IgG (Blue line).

Comment: Line red is the positive signal for SLM-60432R