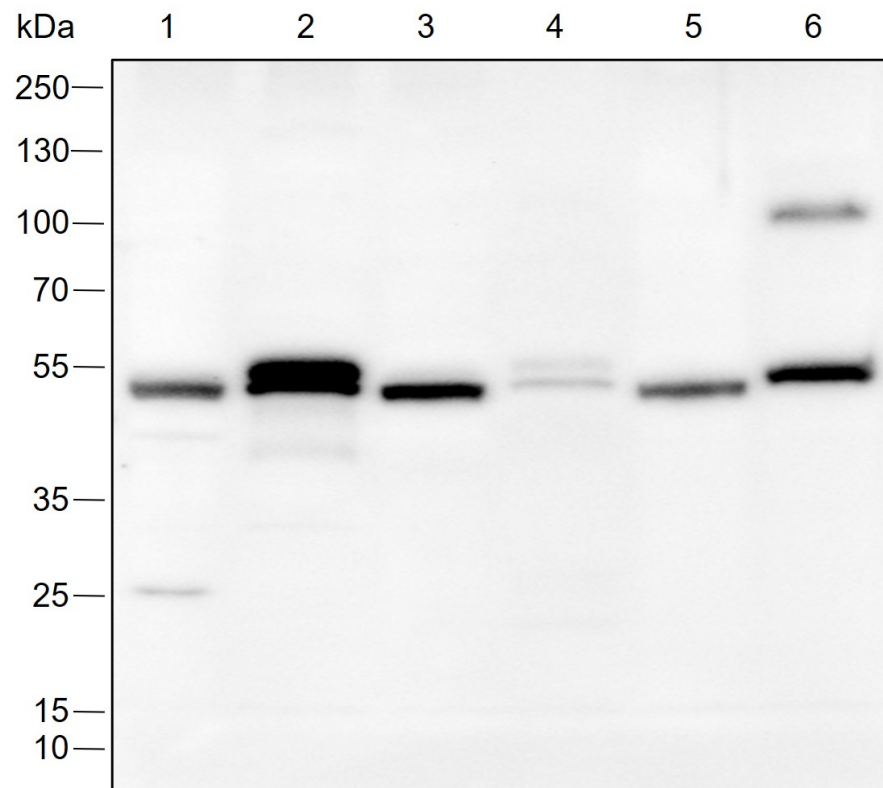


Rabbit Anti-FLI1 antibody

SLM-60431R

Product Name	FLI1
Chinese Name	
Immunogen Species	Rabbit
Clonality	Monoclonal
Clone NO.	G6B1
React Species	Human
Applications	WB=1:500-2000 not yet tested in other applications. optimal dilutions/concentrations should be determined by the end user.
Cellular localization	The nucleus
Form	Liquid
Concentration	1mg/ml
Lsotype	IgG
Purification	Affinity purified by Protein A
Buffer Solution	1M TBS(pH7.4) with 1% BSA, 3% Proclin300 and 50% Glycerol.
Storage	Shipped at 4°C. Store at -20 °C for one year. Avoid repeated freeze/thaw cycles.
Attention	This product as supplied is intended for research use only, not for use in human, therapeutic or diagnostic applications.
PubMed	PubMed
Product Detail	FLI1 (Fli-1 原癌基因, ETS 转录因子) 是一种蛋白质编码基因。与 FLI1 相关的疾病包括出血性疾病, 血小板型 21 和孤立性 Delta-Storage Pool 疾病。其相关途径包括造血 Stem cells 分化和癌症中的转录失调。与该基因相关的基因本体论 (GO) 注释包括 DNA 结合转录因子活性和染色质结合。该基因的重要旁系同源物是 ERG。

Product Picture



Blocking buffer: 5% NFDm/TBST

Primary ab dilution: 1:1000

Primary ab incubation condition: 2 hours at room temperature

Secondary ab: Goat Anti-Rabbit IgG H&L (HRP)

Lysate: 1: K562, 2: Jurkat, 3: Raw264.7, 4: HL-60, 5: NIH-3T3, 6: C6

Protein loading quantity: 20 μ g

Exposure time: 60 s

Predicted MW: 51 kDa

Observed MW: 51 kDa