

Rabbit Anti-AMACR antibody

SLM-60430R

Product Name AMACR

Chinese Name

Immunogen Species Rabbit

Clonality Monoclonal

Clone NO. H4A1

React Species Human

Applications WB=1:500-2000,IHC-P=1:100-500,IHC-F=1:100-500,IF=1:100-500 (Paraffin sections need antigen repair)

not yet tested in other applications.

optimal dilutions/concentrations should be determined by the end user.

Cellular localization The cell membrane

Form Liquid

Concentration 1mg/ml

Isotype IgG

Purification Affinity purified by Protein A

Buffer Solution 1M TBS(pH7.4) with 1% BSA, 3% Proclin300 and 50% Glycerol.

Storage Shipped at 4°C. Store at -20 °C for one year. Avoid repeated freeze/thaw cycles.

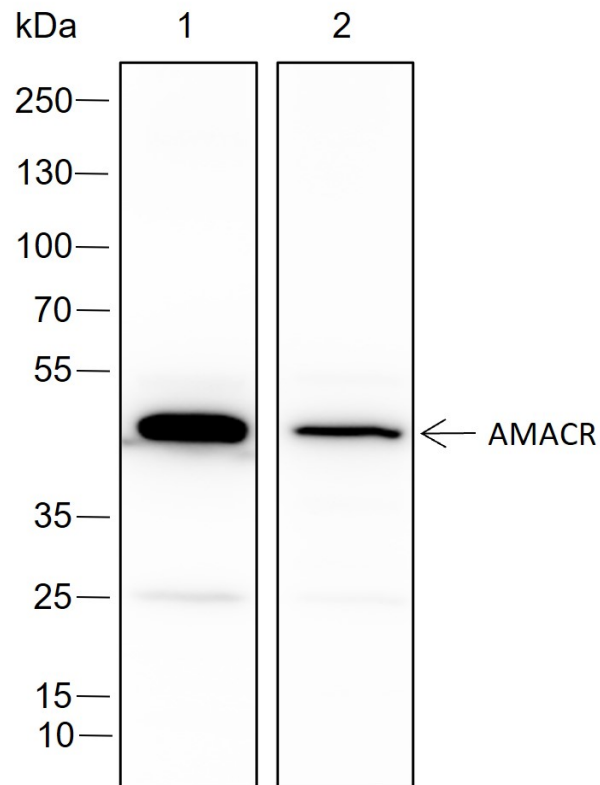
Attention This product as supplied is intended for research use only, not for use in human, therapeutic or diagnostic applications.

PubMed [PubMed](#)

Product Detail

催化 α -甲基支链脂肪酰基-CoA 酯的 (R) -和 (S) -立体异构体的相互转化。仅作用于辅酶 A 硫酯, 不作用于游离脂肪酸, 并且接受多种 α -甲基酰基-CoA 作为底物, 包括角鲨烷酰基-CoA, 三羟基 coprostanoyl-CoA (胆汁酸合成的中间体) 和芳基丙酸 (如抗坏血酸) -炎症药布洛芬 (2- (4-异丁基苯基) 丙酸), 但既不是 3-甲基支链的也不是线性链的酰基辅酶 A。

**Product
Picture**



Blocking buffer: 5% NFDM/TBST

Primary ab dilution: 1:1000

Primary ab incubation condition: 2 hours at room temperature

Secondary ab: Goat Anti-Rabbit IgG H&L (HRP)

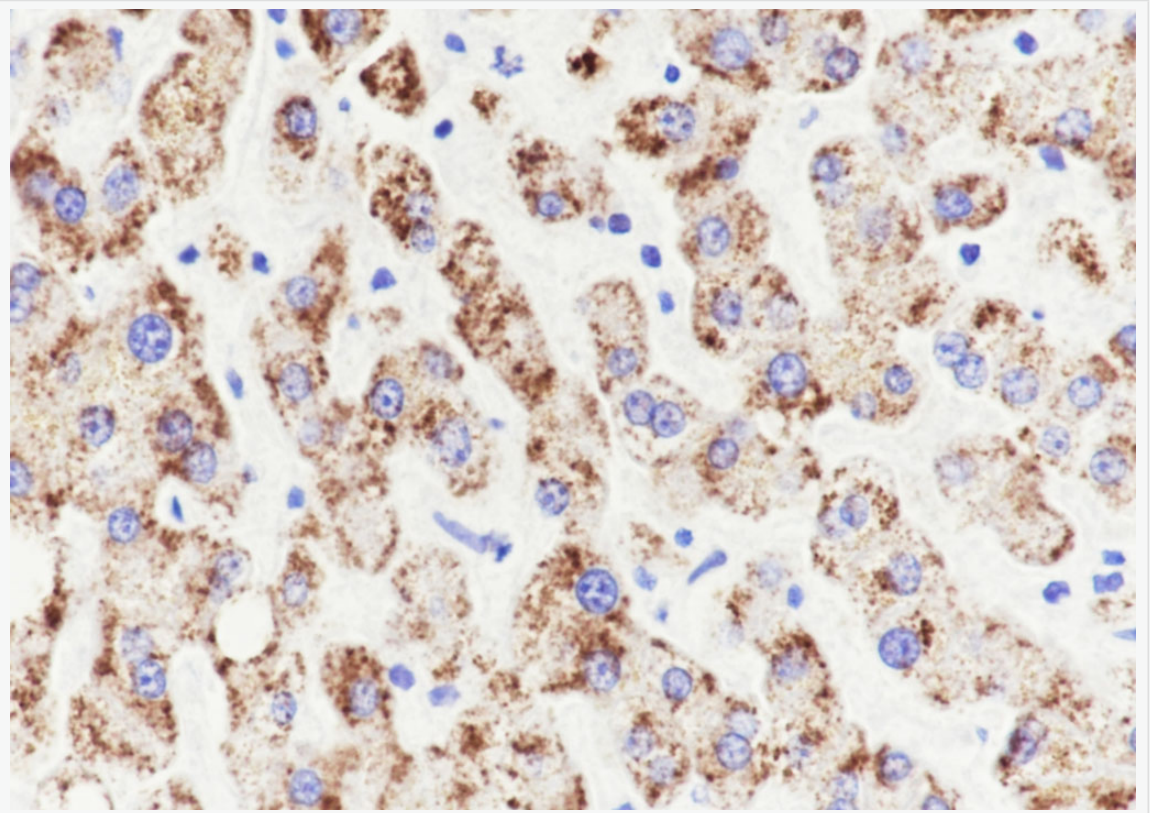
Lysate: 1: LNCAP, 2: Human liver

Protein loading quantity: 20 μ g

Exposure time: 30s

Predicted MW: 42 kDa

Observed MW: 42 kDa



Tissue: Human liver

Section type: Formalin-fixed & Paraffin-embedded section

Retrieval method: High temperature and high pressure

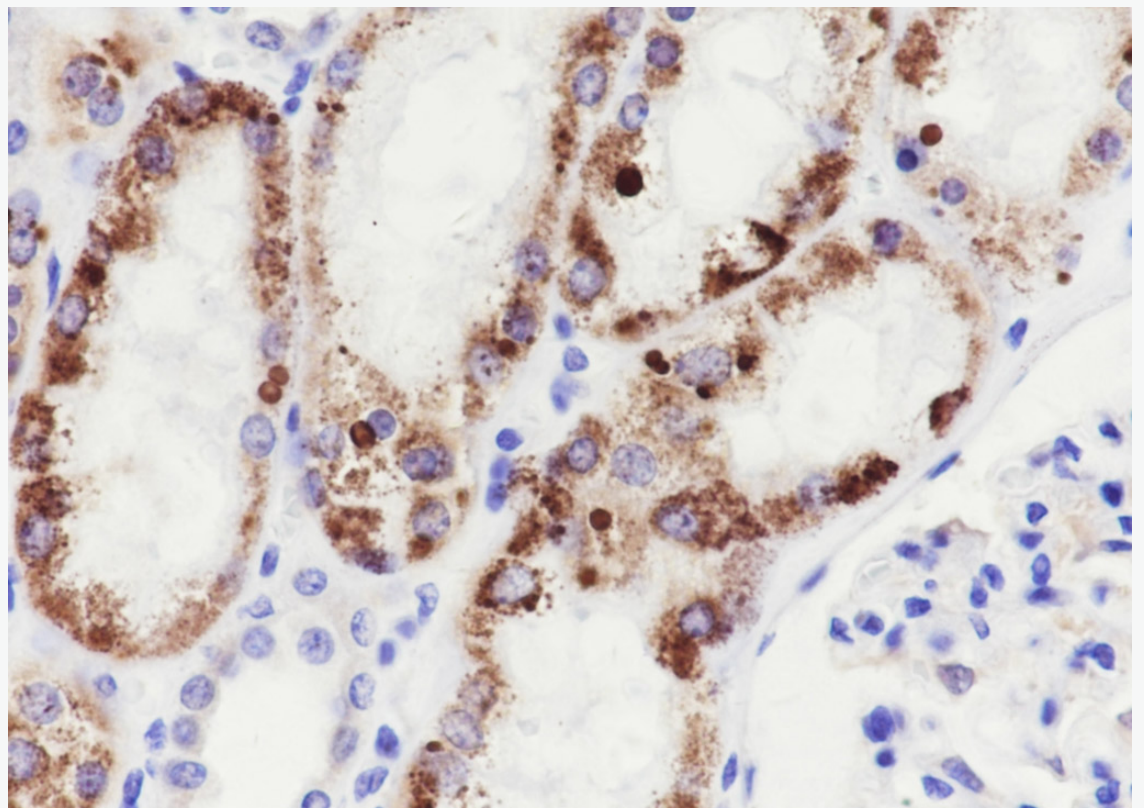
Retrieval buffer: Tris/EDTA buffer, pH 9.0 Primary Ab dilution: 1:100

Primary Ab incubation condition: 1 hour at room temperature

Secondary Ab: SP Kit(Rabbit) (sp-0023)

Counter stain: Hematoxylin (Blue)

Comment: Color brown is the positive signal for SLM-60430R



Tissue: Human kidney

Section type: Formalin-fixed & Paraffin-embedded section

Retrieval method: High temperature and high pressure

Retrieval buffer: Tris/EDTA buffer, pH 9.0 Primary Ab dilution: 1:100

Primary Ab incubation condition: 1 hour at room temperature

Secondary Ab: SP Kit(Rabbit) (sp-0023)

Counter stain: Hematoxylin (Blue)

Comment: Color brown is the positive signal for SLM-60430R