

## Rabbit Anti-ASGPR antibody

SLM-60428R

**Product Name** ASGPR

**Chinese Name**

**Immunogen Species** Rabbit

**Clonality** Monoclonal

**Clone NO.** H12B5

**React Species** Human

**Applications** WB=1:500-2000,IHC-P=1:100-500,IHC-F=1:100-500,ICC/IF=1:50-200,IF=1:100-500,Flow-Cytometry  
(Paraffin sections need antigen repair)  
not yet tested in other applications.  
optimal dilutions/concentrations should be determined by the end user.

**Cellular localization** cytoplasmic

**Form** Liquid

**Concentration** 1mg/ml

**Lsotype** IgG

**Purification** Affinity purified by Protein A

**Buffer Solution** 1M TBS(pH7.4) with 1% BSA, 3% Proclin300 and 50% Glycerol.

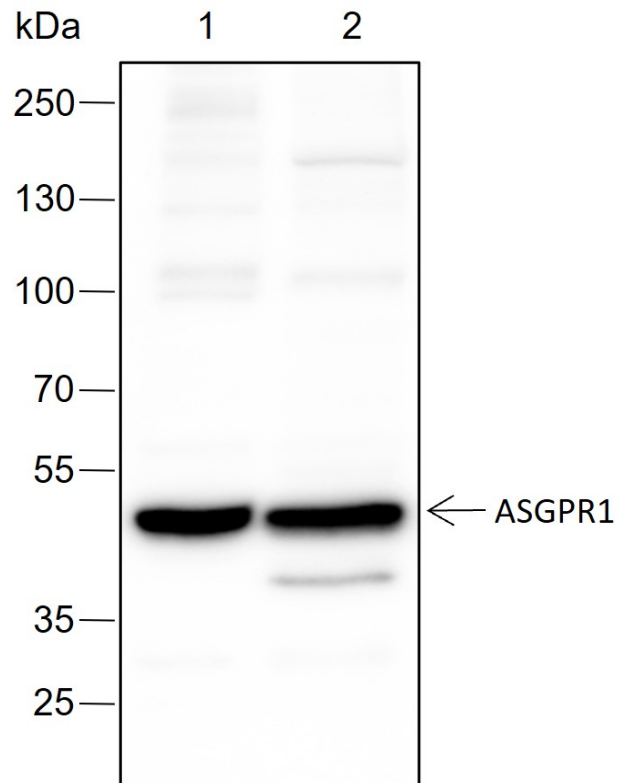
**Storage** Shipped at 4°C. Store at -20 °C for one year. Avoid repeated freeze/thaw cycles.

**Attention** This product as supplied is intended for research use only, not for use in human, therapeutic or diagnostic applications.

**PubMed** [PubMed](#)

**Product Detail** 介导血浆 glycoprotein 的内吞作用，其复杂碳水化合物部分上的末端唾液酸残基已被去除。识别末端半乳糖和 N-乙酰半乳糖胺单元。配体与受体结合后，所得复合物被内化并转运到溶酶体细胞器，在该细胞器中受体与配体解离。然后受体回到 The cell membrane 表面。钙是配体结合的必需离子。

**Product  
Picture**



Blocking buffer: 5% NFDm/TBST

Primary ab dilution: 1:1000

Primary ab incubation condition: 2 hours at room temperature

Secondary ab: Goat Anti-Rabbit IgG H&L (HRP)

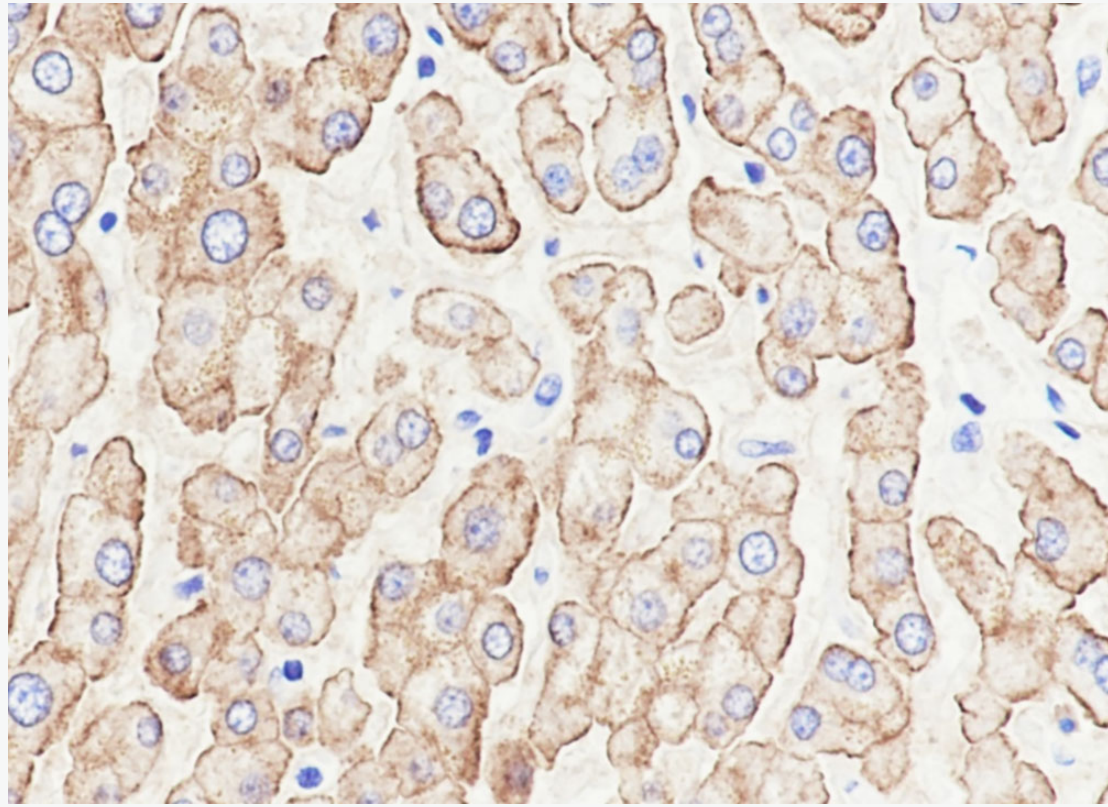
Lysate: 1: HepG2, 2: Human liver

Protein loading quantity: 20  $\mu$ g

Exposure time: 30 s

Predicted MW: 33 kDa

Observed MW: 40-50 kDa



Tissue: Human liver

Section type: Formalin fixed & Paraffin -embedded section

Retrieval method: High temperature and high pressure

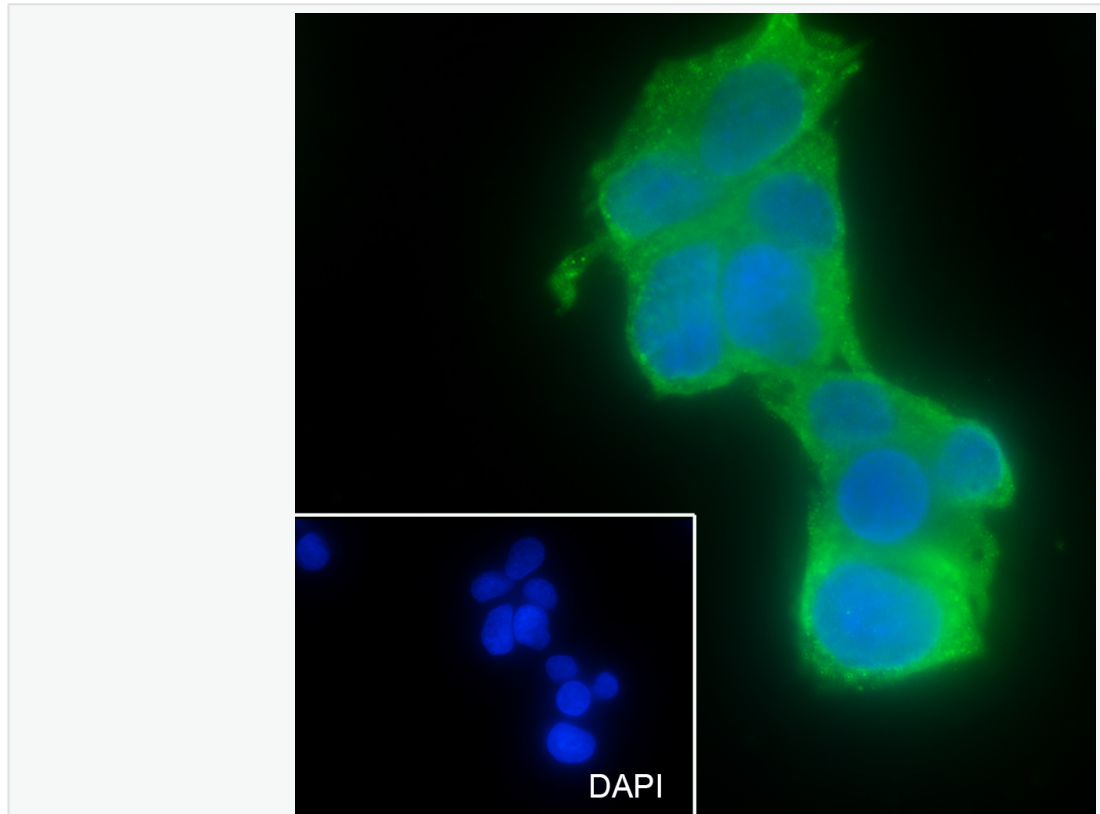
Retrieval buffer: Tris/EDTA buffer, pH 9.0 Primary ab dilution: 1:100

Primary ab incubation condition: 1 hour at room temperature

Secondary ab: SP Kit(Rabbit) (sp-0023)

Counter stain: Hematoxylin (Blue)

Comment: Color brown is the positive signal for SLM-60428R



Cell line: HepG2

Fixative: 4% Paraformaldehyde

Permeabilization: 0.1% TritonX-100

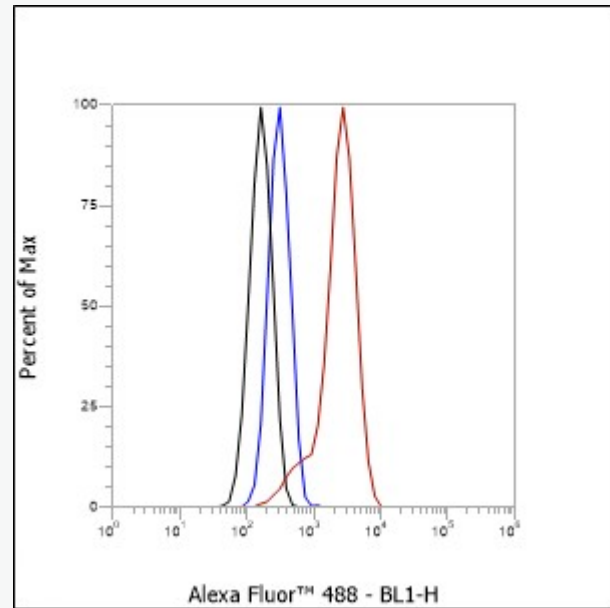
Primary ab dilution: 1:50

Primary incubation condition: 4°C overnight

Secondary ab: Goat Anti-Rabbit IgG

Nuclear counter stain: DAPI (Blue)

Comment: Color green is the positive signal for SLM-60428R



Cell line: HepG2

Fixative: 4% Paraformaldehyde

Permeabilization: 90% Methanol

Primary ab dilution: 1:100

Secondary ab: Goat anti Rabbit IgG

Unlabelled control: The cell without incubation with primary antibody and secondary antibody (black line).

Isotype control: Rabbit monoclonal IgG (Blue line).

Comment: Line red is the positive signal for SLM-60428R