

Rabbit Anti-PLIN2 antibody

SLM-54764R

Product Name	PLIN2
Chinese Name	脂肪分化相关蛋白 Recombinant rabbit monoclonal anti
Alias	PLIN2_HUMAN; Perilipin-2; ADFP; Adipophilin; Adipose differentiation-related protein;
Research Area	Tumour Cardiovascular Signal transduction
Immunogen Species	Rabbit
Clonality	Monoclonal
React Species	Human,Mouse,Rat
Applications	WB=1:500-2000,IHC-P=1:100-500,IHC-F=1:100-500,IF=1:100-500,Flow-Cyt=1:50-100 not yet tested in other applications. optimal dilutions/concentrations should be determined by the end user.
Theoretical molecular weight	48kDa
Cellular localization	The cell membrane
Form	Liquid
Concentration	1mg/ml
immunogen	Recombinant human PLIN2
Lsotype	IgG
Purification	affinity purified by Protein A
Buffer Solution	1M TBS(pH7.4) with 1% BSA, 3% Proclin300 and 50% Glycerol.
Storage	Shipped at 4°C. Store at -20 °C for one year. Avoid repeated freeze/thaw cycles.
Attention	This product as supplied is intended for research use only, not for use in human, therapeutic or diagnostic applications.
PubMed	PubMed
Product Detail	The protein encoded by this gene belongs to the perilipin family, members of which coat intracellular lipid storage droplets. This protein is associated with the lipid globule surface

membrane material, and maybe involved in development and maintenance of adipose tissue. However, it is not restricted to adipocytes as previously thought, but is found in a wide range of cultured cell lines, including fibroblasts, endothelial and epithelial cells, and tissues, such as lactating mammary gland, adrenal cortex, Sertoli and Leydig cells, and hepatocytes in alcoholic liver cirrhosis, suggesting that it may serve as a marker of lipid accumulation in diverse cell types and diseases. Alternatively spliced transcript variants have been found for this gene. [provided by RefSeq, Mar 2011]

Function:

May be involved in development and maintenance of adipose tissue.

Subcellular Location:

Membrane; Peripheral membrane protein.

Tissue Specificity:

Milk lipid globules.

Post-translational modifications:

Acylated; primarily with C14, C16 and C18 fatty acids.

Similarity:

Belongs to the perilipin family.

SWISS:

Q99541

Gene ID:

123

Database links:

[Entrez Gene: 123](#) Human

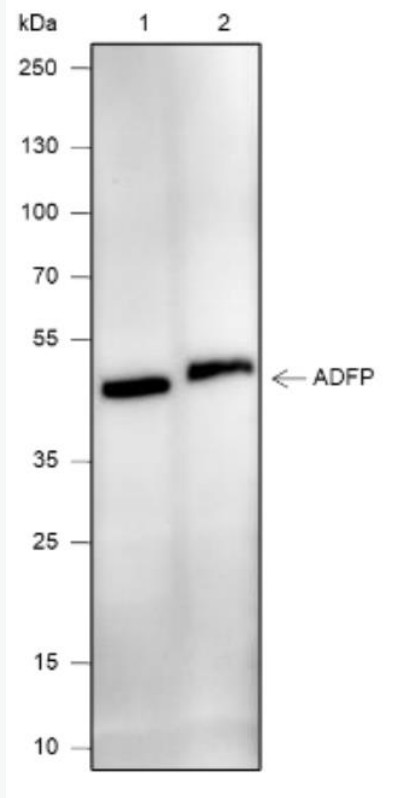
[Entrez Gene: 11520](#) Mouse

[SwissProt: Q99541](#) Human

[SwissProt: P43883](#) Mouse

[SwissProt: Q4PLW0](#) Pig

**Product
Picture**



Blocking buffer: 5% NFDN/TBST

Primary Ab dilution: 1:1000

Primary Ab incubation condition: 2 hours at
room temperature

Secondary Ab: Goat Anti-Rabbit IgG H&L
(HRP)

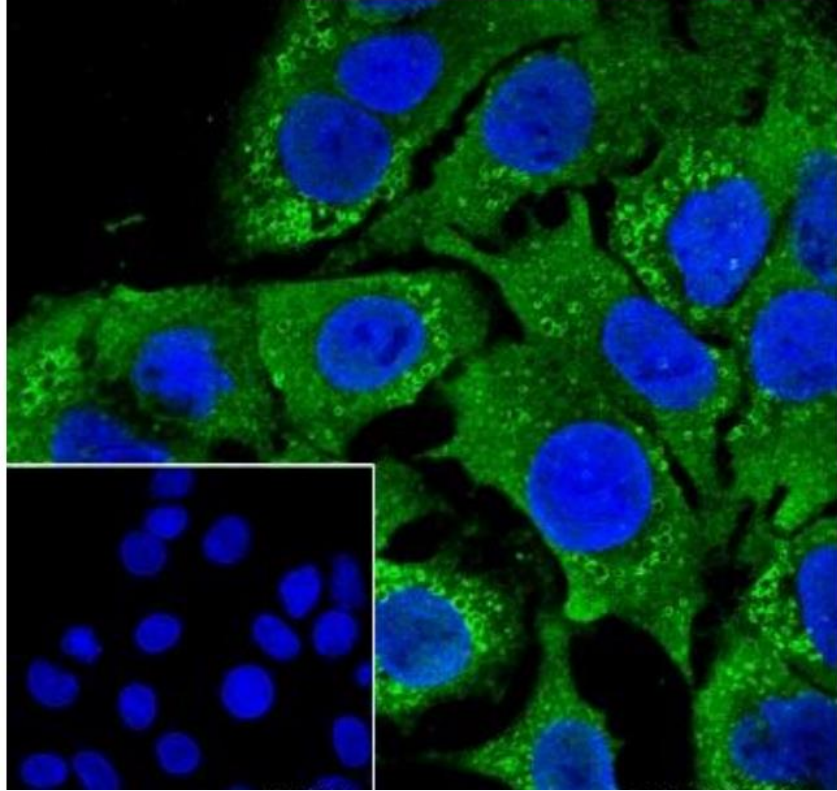
Lysate: 1: Mouse brain, 2: Rat brain

Protein loading quantity: 20 μ g

Exposure time: 60 s

Predicted MW: 48 kDa

Observed MW: 48 kDa



Cell line: HepG2

Fixation: 4% Paraformaldehyde

Permeabilization: 0.1% TritonX-100

Primary Ab dilution: 1:50

Primary Ab incubation condition: 4°C
overnight

Secondary Ab: Goat Anti-Rabbit IgG

Nuclear counter stain: DAPI (Blue)



SunLong Biotech Co.,LTD
Tel: 0086-571-56623320 Fax:0086-571-56623318
E-mail:sales@sunlongbiotech.com
www.sunlongbiotech.com

Comment: Color green is the positive signal for

SLM-54764R