

## Rabbit Anti-Cubilin antibody

SLM-54329R

**Product Name** Cubilin

**Chinese Name** 内皮因子维生素 B12 受体 Recombinant rabbit monoclonal anti

**Alias** 460 kDa receptor; cubilin (intrinsic factor-cobalamin receptor); Cubilin precursor; CUBN; IFCR; Intestinal intrinsic factor receptor; intrinsic factor B12-receptor; intrinsic factor-cobalamin receptor; intrinsic factor-vitamin B12 receptor; megaloblastic anemia 1; MGA1.

**Research Area** Tumour Cell biology immunology Chromatin and nuclear signals transcriptional regulatory factor

**Immunogen Species** Rabbit

**Clonality** Monoclonal

**Clone NO.** 7B12

**React Species** Human

**Applications** WB=1:500-2000,IHC-P=1:100-500,IHC-F=1:100-500,IF=1:100-500 (Paraffin sections need antigen repair)  
not yet tested in other applications.  
optimal dilutions/concentrations should be determined by the end user.

**Theoretical molecular weight** 395kDa

**Form** Liquid

**Concentration** 1mg/ml

**immunogen** Recombinant human Cubilin protein

**Lsotype** IgG

**Purification** affinity purified by Protein A

**Buffer Solution** 1\*TBS (pH7.4), 5% BSA, 40% Glycerol. Preservative: 5% Sodium Azide.

**Storage** Shipped at 4°C. Store at -20 °C for one year. Avoid repeated freeze/thaw cycles.

**Attention** This product as supplied is intended for research use only, not for use in human, therapeutic or diagnostic applications.

**PubMed** [PubMed](#)

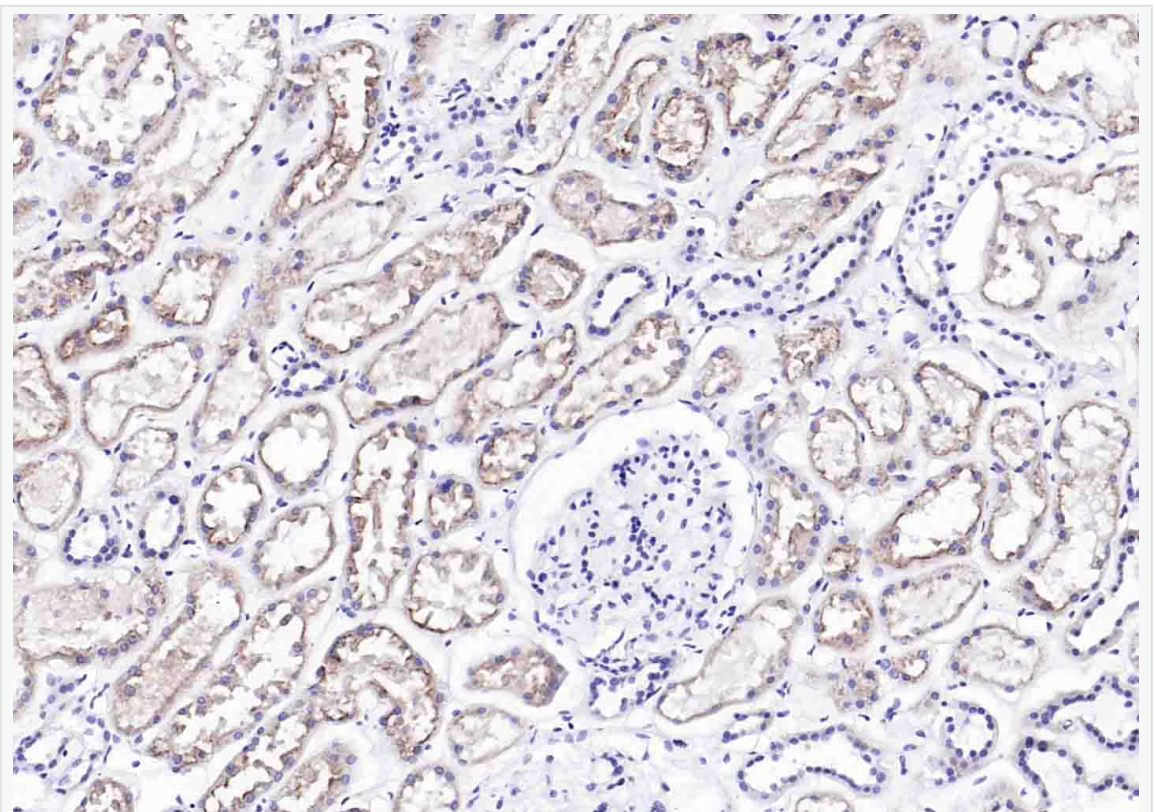
**Product  
Detail**

Cubilin is an endocytic receptor that lacks a classical transmembrane region. It is a multidomain receptor that contains an amino terminal 110 residue segment followed by 8 epidermal growth factor (EGF)-like repeats and a contiguous stretch of 27 CUB domains. Cubilin acts as a receptor for intrinsic factor-vitamin B12 complexes. Cubilin is located within the epithelium of intestine and kidney. Cubilin co-localizes with and binds to Megalin, a 600kDa member of the LDL receptor family that is required for the internalization of cubilin-bound ligands, such as vitamin B12, apolipoprotein A1 and Albumin. Megalin specifically binds to cubilin in the amino terminal region that contains the EGF-like repeats and CUB domains 1 and 2. Mutations in Cubilin may play a role in autosomal recessive megaloblastic anemia also known as Imerslund-Grasbeck's disease, which causes intestinal malabsorption of vitamin B12.

**SWISS:**  
O60494

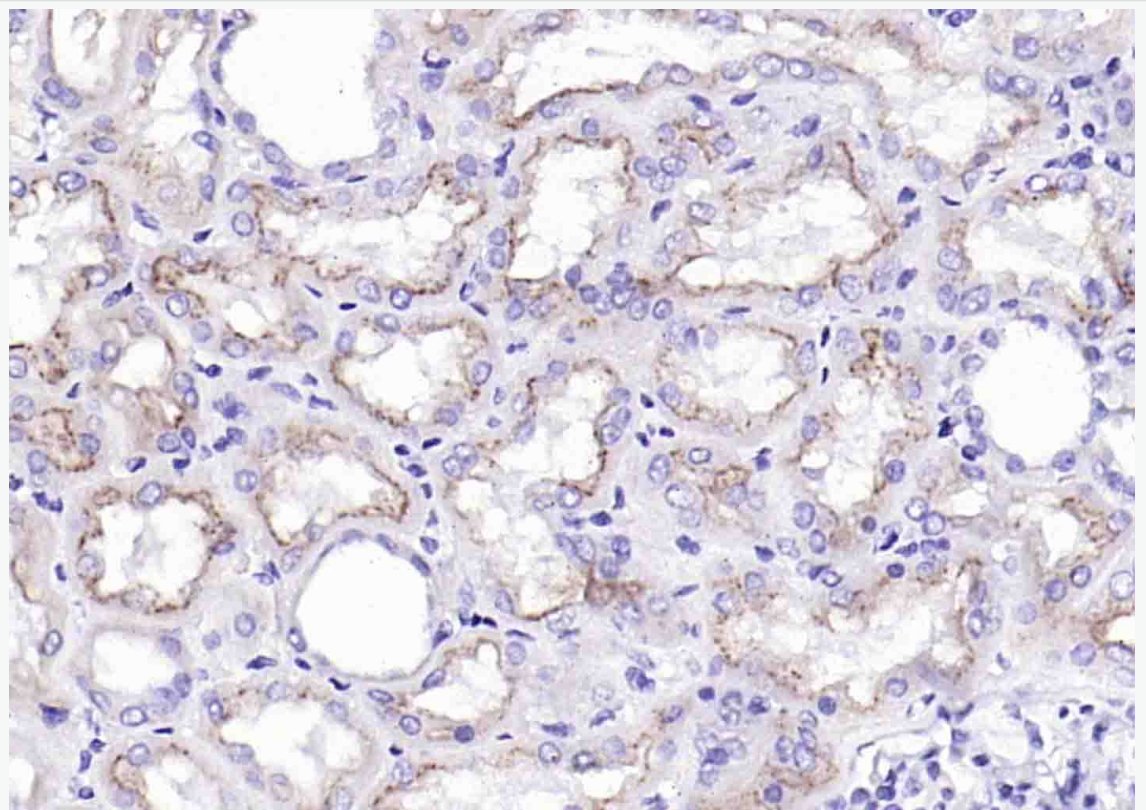
**Gene ID:**  
8029

**Product  
Picture**



Paraformaldehyde-fixed, paraffin embedded (Human kidney); Antigen retrieval by boiling in sodium citrate buffer (pH6.0) for 15min; Block endogenous peroxidase by

3% hydrogen peroxide for 20 minutes; Blocking buffer (normal goat serum) at 37°C for 30min; Antibody incubation with (Cubilin) Monoclonal Antibody, Unconjugated (SLM-54329R) at 1:200 overnight at 4°C, followed by operating according to SP Kit(Rabbit) (sp-0023) instructions and DAB staining.



Paraformaldehyde-fixed, paraffin embedded (Human kidney carcinoma); Antigen retrieval by boiling in sodium citrate buffer (pH6.0) for 15min; Block endogenous peroxidase by 3% hydrogen peroxide for 20 minutes; Blocking buffer (normal goat serum) at 37°C for 30min; Antibody incubation with (Cubilin) Monoclonal Antibody, Unconjugated (SLM-54329R) at 1:200 overnight at 4°C, followed by operating



SunLong Biotech Co.,LTD  
Tel: 0086-571-56623320 Fax:0086-571-56623318  
E-mail:sales@sunlongbiotech.com  
www.sunlongbiotech.com

---

according to SP Kit(Rabbit) (sp-0023) instructions and DAB staining.