

Rabbit Anti-CD171/L1CAM antibody

SLM-52926R

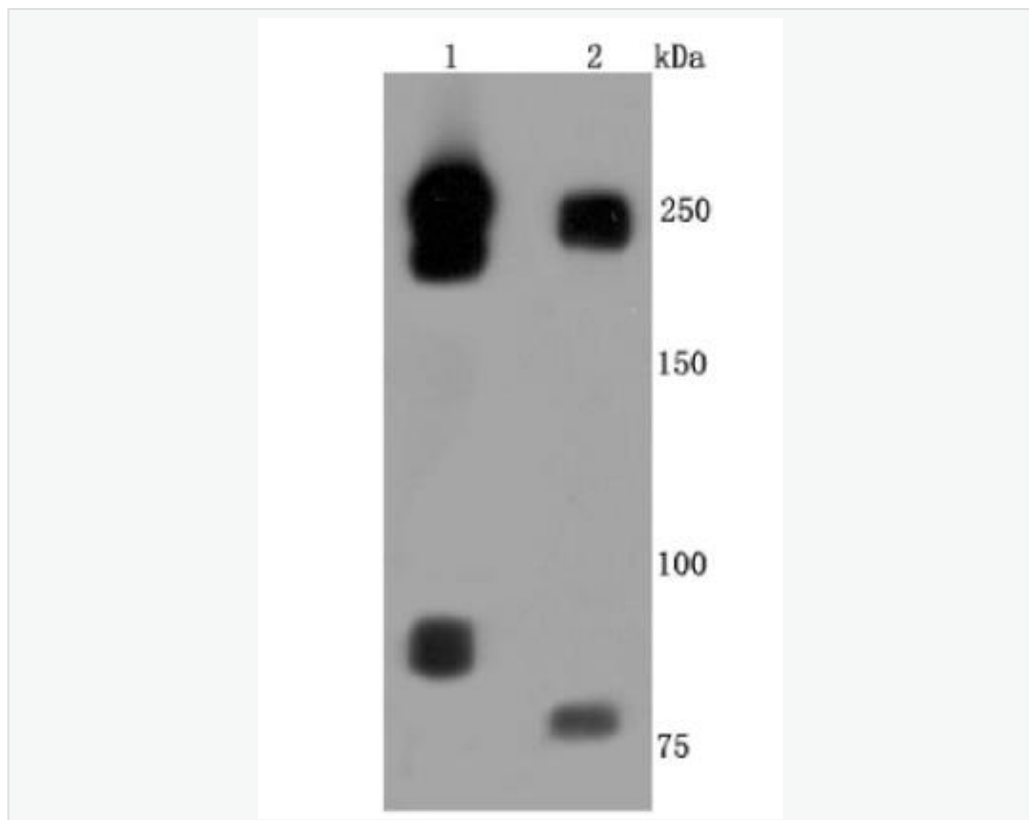
Product Name	CD171/L1CAM
Chinese Name	神经 Cell adhesion molecule 配体 1Recombinant rabbit monoclonal anti L1CAM_HUMAN; Neural cell adhesion molecule L1; CAML1; MIC5;
Alias	N-CAM-L1; NCAM-L1; CD171; L1 cell adhesion molecule; S10; HSAS; MASA; SPG1; HSAS1; N-CAM-L1;
Research Area	immunology Neurobiology Signal transduction
Immunogen Species	Rabbit
Clonality	Monoclonal
React Species	Human WB=1:1000-5000,IHC-P=1:200-800,IHC-F=1:200-800,IF=1:200-800 (Paraffin sections need antigen repair)
Applications	not yet tested in other applications. optimal dilutions/concentrations should be determined by the end user.
Theoretical molecular weight	138kDa
Cellular localization	The cell membrane
Form	Liquid
Concentration	1mg/ml
immunogen	Recombinant human L1CAM protein
Lsotype	IgG
Purification	affinity purified by Protein A
Buffer Solution	1*TBS (pH7.4), 5% BSA, 40% Glycerol. Preservative: 5% Sodium Azide
Storage	Shipped at 4°C. Store at -20 °C for one year. Avoid repeated freeze/thaw cycles.
Attention	This product as supplied is intended for research use only, not for use in human, therapeutic or diagnostic applications.
PubMed	PubMed
Product Detail	L1cam (L1 cell adhesion molecule isoform 1 precursor) is an axonal

glycoprotein belonging to the immunoglobulin supergene family. The ectodomain, consisting of several immunoglobulin-like domains and fibronectin-like repeats (type III), is linked via a single transmembrane sequence to a conserved cytoplasmic domain. This cell adhesion molecule plays an important role in nervous system development, including neuronal migration and differentiation. Mutations in the gene cause three X-linked neurological syndromes known by the acronym CRASH (corpus callosum hypoplasia, retardation, aphasia, spastic paraplegia and hydrocephalus). Alternative splicing of a neuron-specific exon is thought to be functionally relevant. [provided by RefSeq].

SWISS:
P32004

Gene ID:
3897

**Product
Picture**



Western blot analysis of L1CAM on different lysates. Proteins were transferred to a PVDF membrane and blocked with 5% BSA in PBS for 1

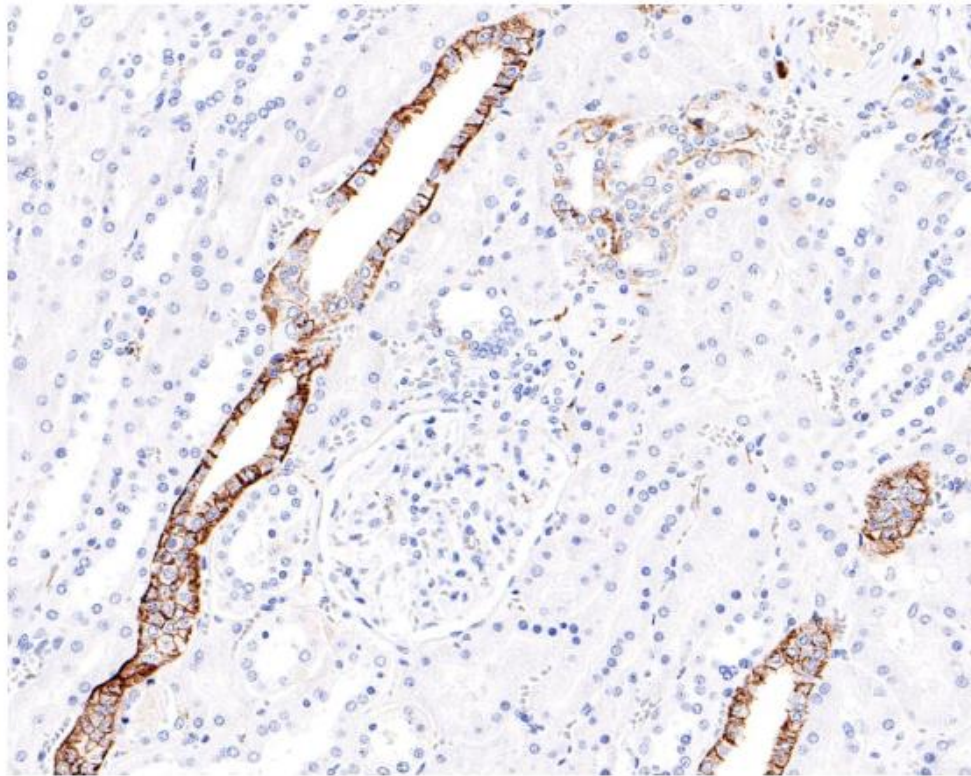
hour at room

temperature. The primary antibody (ET1703-51, 1/500) was used in 5% BSA at room temperature for 2 hours. Goat Anti-Rabbit IgG - HRP Secondary Antibody at 1:50,000 dilution was used for 1 hour at room temperature.

Positive control:

Lane 1: Hela cell lysate

Lane 2: Human brain tissue lysate



Immunohistochemical analysis of paraffin-embedded human kidney tissue with Rabbit anti-L1CAM antibody at 1/200 dilution. The section was

pre-treated using heat mediated antigen retrieval with Tris-EDTA buffer (pH 9.0) for 20 minutes. The tissues were blocked in 1% BSA for 20 minutes at room temperature, washed with ddH₂O and PBS, and then probed with the primary antibody at 1/200 dilution for 1 hour at room temperature. The detection was performed using an HRP conjugated compact polymer system. DAB was used as the chromogen. Tissues were counterstained with hematoxylin and mounted with DPX.