

## Rabbit Anti-GBA antibody

SLM-52907R

**Product Name** GBA

**Chinese Name**  $\beta$ -葡萄糖脑苷脂酶 Recombinant rabbit monoclonal anti

**Alias** Glucosidase beta; Acid beta glucosidase; Acid beta-glucosidase; Alglucerase; Beta glucocerebrosidase; BETA GLUCOSIDASE, ACID; Beta-glucocerebrosidase; betaGC; D glucosyl N acylsphingosine glucohydrolase; D-glucosyl-N-acylsphingosine glucohydrolase; EC 3.2.1.45 ; Gba protein; GBA1; GC antibody GCase; GCB; GLCM\_HUMAN; GLUC; Glucocerebrosidase (alt.); Glucocerebrosidase; GLUCOCEREBROSIDASE PSEUDOGENE; Glucosidase beta; Glucosidase, beta, acid; Glucosidase, beta; acid (includes glucosylceramidase); Glucosylceramidase; Imiglucerase; Lysosomal glucocerebrosidase.

**Research Area** Tumour Cell biology Neurobiology Signal transduction The new supersedes the old

**Immunogen Species** Rabbit

**Clonality** Monoclonal

**React Species** Human,Mouse,Rat

**Applications** WB=1:500-2000,IHC-P=1:100-500,IHC-F=1:100-500,IF=1:100-500 (Paraffin sections need antigen repair)  
not yet tested in other applications.  
optimal dilutions/concentrations should be determined by the end user.

**Theoretical molecular weight** 56kDa

**Cellular localization** cytoplasmic The cell membrane

**Form** Liquid

**Concentration** 1mg/ml

**immunogen** KLH conjugated synthetic peptide derived from human GBA: 450-536/536

**Lsotype** IgG

**Purification** affinity purified by Protein A

**Buffer** 1M TBS(pH7.4) with 1% BSA, 3% Proclin300 and 50% Glycerol.



---

**Solution**

**Storage**

Shipped at 4°C. Store at -20 °C for one year. Avoid repeated freeze/thaw cycles.

**Attention**

This product as supplied is intended for research use only, not for use in human, therapeutic or diagnostic applications.

**PubMed**

[PubMed](#)

This gene encodes a lysosomal membrane protein that cleaves the beta-glucosidic linkage of glycosylceramide, an intermediate in glycolipid metabolism. Mutations in this gene cause Gaucher disease, a lysosomal storage disease characterized by an accumulation of glucocerebrosides. A related pseudogene is approximately 12 kb downstream of this gene on chromosome 1. Alternative splicing results in multiple transcript variants. [provided by RefSeq, Jan 2010] Subunit : Interacts with saposin-C. Interacts with SCARB2.

**SWISS:**  
P04062

**Gene ID:**  
2629

**Database links:**

**Product  
Detail**

[Entrez Gene: 2629](#) Human

[Entrez Gene: 14466](#) Mouse

[Entrez Gene: 684536](#) Rat

[Omim: 606463](#) Human

[SwissProt: P04062](#) Human

[SwissProt: P17439](#) Mouse

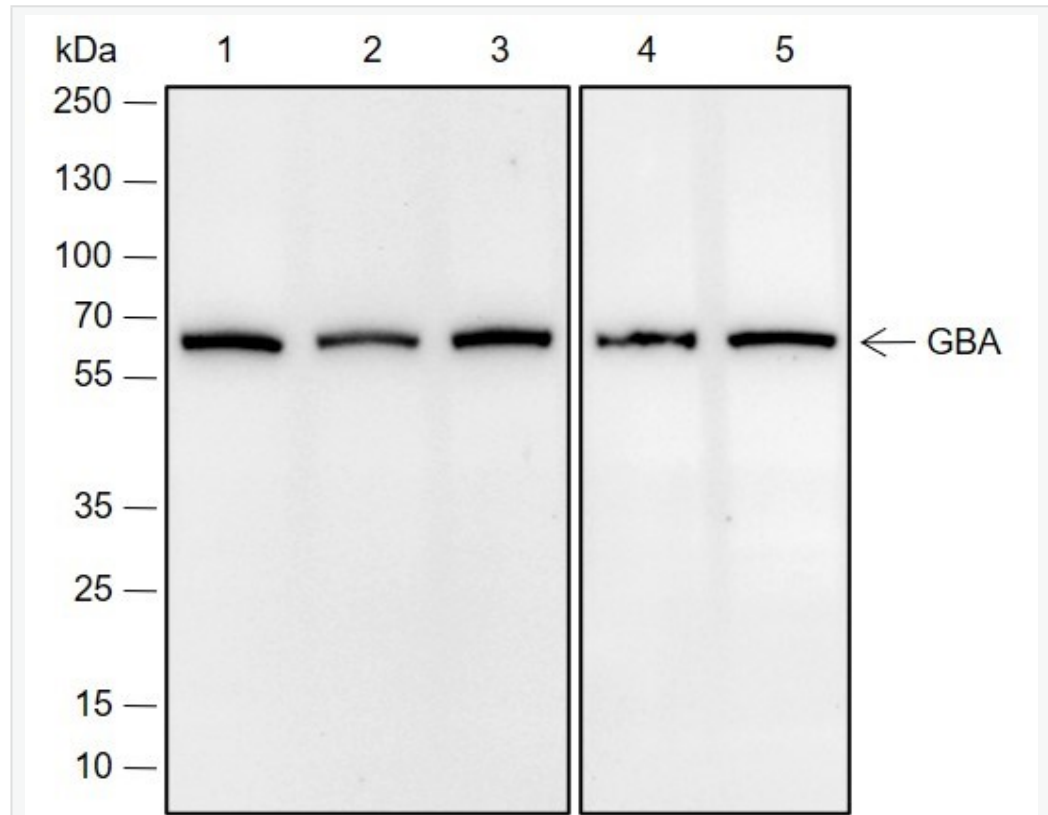
[Unigene: 282997](#) Human

[Unigene: 719930](#) Human

[Unigene: 5031](#) Mouse

[Unigene: 162606](#) Rat

**Product  
Picture**



Blocking buffer: 5% NFDm/TBST

Primary Ab dilution: 1:20000

Primary Ab incubation condition: 2 hours at room temperature

Secondary Ab: Goat Anti-Rabbit IgG H&L (HRP)

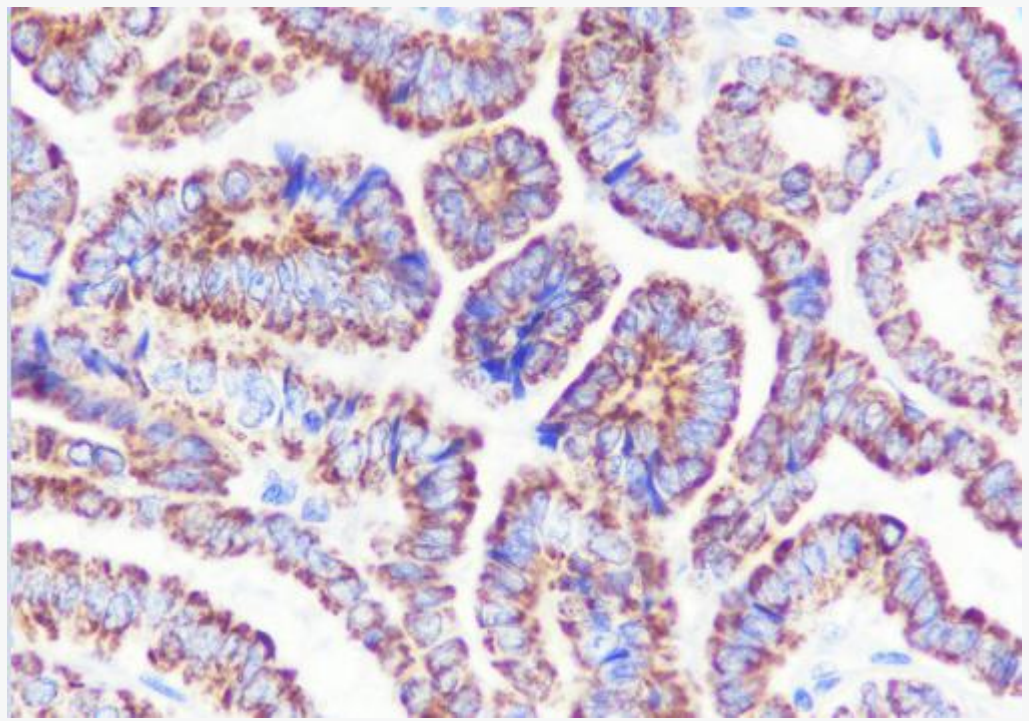
Lysate: 1: MCF-7, 2: Saos-2, 3: SH-SY5Y, 4: 4T1, 5: C6

Protein loading amount: 20  $\mu$ g

Exposure time: 60 s

Predicted MW: 60 kDa

Observed MW: 60 kDa



Tissue: Human thyroid carcinoma

Section type: Formalin-fixed & paraffin-embedded section

Retrieval method: High temperature and high pressure

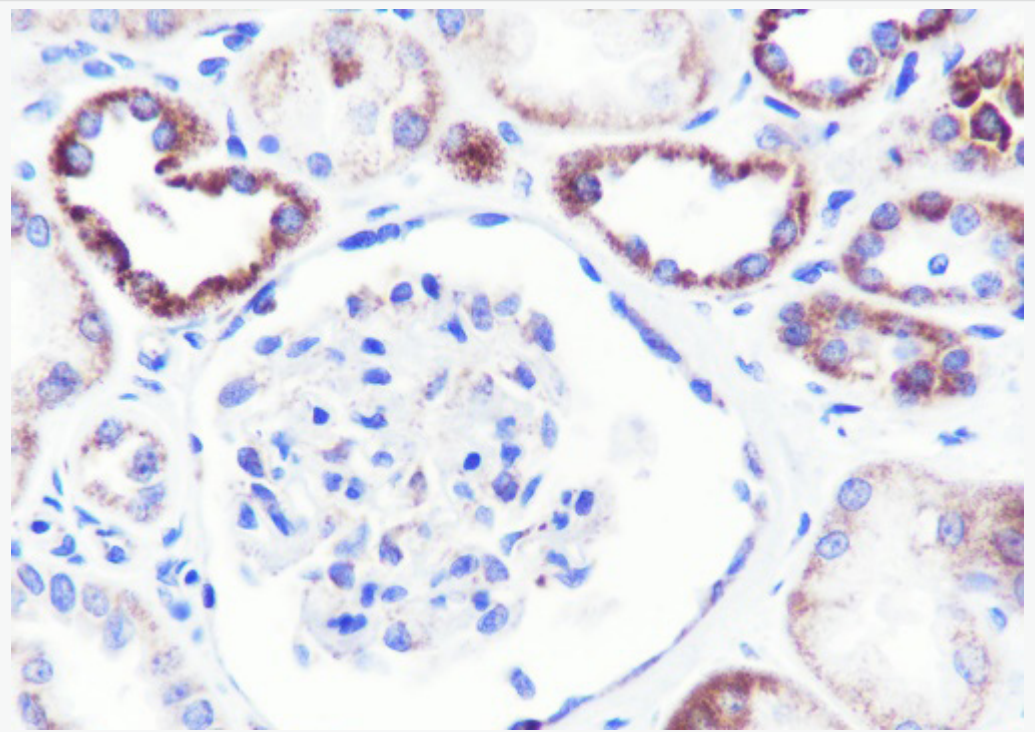
Retrieval buffer: Tris/EDTA buffer, pH 9.0 Primary Ab dilution: 1:50

Primary Ab incubation condition: 1 hour at room temperature

Secondary Ab: SP Kit(Rabbit) (sp-0023)

Counter stain: Hematoxylin (Blue)

Comment: Color brown is the positive signal for SLM-52907R



Tissue: Human kidney

Section type: Formalin-fixed & paraffin-embedded section

Retrieval method: High temperature and high pressure

Retrieval buffer: Tris/EDTA buffer, pH 9.0 Primary Ab dilution: 1:50

Primary Ab incubation condition: 1 hour at room temperature

Secondary Ab: SP Kit(Rabbit) (sp-0023)

Counter stain: Hematoxylin (Blue)

Comment: Color brown is the positive signal for SLM-52907R