

Rabbit Anti-HE4 antibody

SLM-52840R

Product Name HE4

Chinese Name 附睾分泌蛋白 4Recombinant rabbit monoclonal anti

Alias

WFDC2 WAP four-disulfide core domain 2; dJ461P17.6; EDDM4; epididymal protein 4; Epididymis secretory protein E4; Epididymis specific whey acidic protein type four disulfide core; HE 4; Major epididymis specific protein E4; Major epididymis-specific protein E4; MGC57529; Putative protein inhibitor WAP5; WAP 5; WAP domain containing protein HE4; WAP four disulfide core domain protein 2; WAP four-disulfide core domain protein 2; WAP5; WFDC2; WFDC2_MOUSE.

Research Area

Tumour Cell biology Cyclin

Immunogen Species

Rabbit

Clonality

Monoclonal

React Species

Human,Mouse

Applications

WB=1:500-2000,IHC-P=1:100-500,IHC-F=1:400-800,ICC/IF=1:50-200,IF=1:50-200,Flow-Cytometry
(Paraffin sections need antigen repair)
not yet tested in other applications.
optimal dilutions/concentrations should be determined by the end user.

Theoretical molecular weight

23kDa

Cellular localization

Secretory protein

Form

Liquid

Concentration 1mg/ml

immunogen

KLH conjugated synthetic peptide derived from human HE4 C-terminal

Lsotype

IgG

Purification

affinity purified by Protein A

Buffer Solution

1M TBS(pH7.4) with 1% BSA, 3% Proclin300 and 50% Glycerol.

Storage

Shipped at 4°C. Store at -20 °C for one year. Avoid repeated freeze/thaw cycles.



Attention

This product as supplied is intended for research use only, not for use in human, therapeutic or diagnostic applications.

PubMed

[PubMed](#)

This gene encodes a protein that is a member of the WFDC domain family. The WFDC domain, Signature motif, contains eight cysteines forming four disulfide bonds at the core of the protein, functions as a protease inhibitor in many family members. This gene is expressed in pulmonary cells, and was also found to be expressed in some ovarian cancers. The encoded protein is a small protein, which may be involved in sperm maturation. [provided by RefSeq, Jul 2008]

SWISS:

Q14508

Gene ID:

10406

**Product
Detail**

Database links:

[Entrez Gene: 10406](#) Human

[Entrez Gene: 67701](#) Mouse

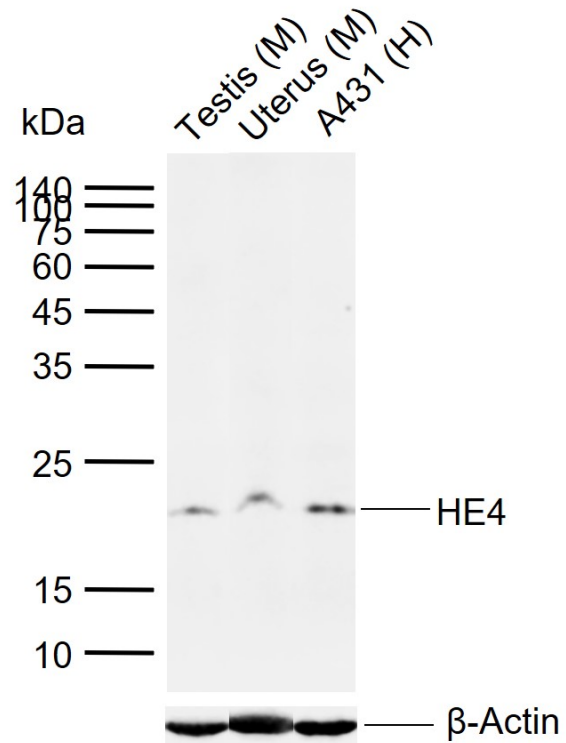
[SwissProt: Q14508](#) Human

[SwissProt: Q9DAU7](#) Mouse

[Unigene: 2719](#) Human

[Unigene: 27289](#) Mouse

**Product
Picture**



Sample:

Lane 1: Mouse Testis tissue lysates

Lane 2: Mouse Uterus tissue lysates

Lane 3: Human A431 cell lysates

Primary: Anti-HE4 (SLM-52840R) at 1/1000 dilution

Secondary: IRDye800CW Goat Anti-Rabbit IgG at 1/20000 dilution

Predicted band size: 23 kDa

Observed band size: 22 kDa