

Rabbit Anti-5T4 antibody

SLM-52422R

Product Name	5T4
Chinese Name	滋养层细胞 glycoprotein5T4Recombinant rabbit monoclonal anti 5T4; 5T4 oncofetal antigen; 5T4 oncofetal trophoblast glycoprotein; 5T4 oncotrophoblast glycoprotein; 5T4AG; M6P1; TPBG; TPBG_HUMAN; Trophoblast glycoprotein.
Alias	
Immunogen Species	Rabbit
Clonality	Monoclonal
Clone NO.	23B1
React Species	Human WB=1:500-2000,IHC-P=1:100-500,IHC-F=1:100-500,IF=1:100-500 (Paraffin sections need antigen repair)
Applications	not yet tested in other applications. optimal dilutions/concentrations should be determined by the end user.
Cellular localization	The cell membrane
Form	Lyophilized or Liquid
Concentration	1mg/ml
immunogen	KLH conjugated synthetic peptide derived from human TPBG/5T4
Lsotype	IgG
Purification	affinity purified by Protein A
Buffer Solution	1M TBS(pH7.4) with 1% BSA, 3% Proclin300 and 50% Glycerol.
Storage	Shipped at 4°C. Store at -20 °C for one year. Avoid repeated freeze/thaw cycles.
Attention	This product as supplied is intended for research use only, not for use in human, therapeutic or diagnostic applications.
PubMed	PubMed
Product Detail	TPBG is a 420 amino acid single-pass type I membrane protein expressed by all types of trophoblasts as early as 9 weeks of development. TPBG contains an N-terminal putative signal sequence, a 310-residue extracellular region, a membrane anchorage domain and a 44-amino acid cytoplasmic tail with a

potential phosphorylation site. The extracellular region has seven potential N-glycosylation sites and seven leucine-rich repeats, which are located in two regions separated by a hydrophilic stretch. Suggested to be involved in cell adhesion, TPBG may also be associated with tumor growth and progression.

Subcellular Location:

Membrane.

Tissue Specificity:

Expressed by all types of trophoblasts as early as 9 weeks of development. Specific for trophoblastic cells except for amniotic epithelium. In adult tissues, the expression is limited to a few epithelial cell types but is found on a variety of carcinoma.

Similarity:

Contains 6 LRR (leucine-rich) repeats. Contains 1 LRRCT domain. Contains 1 LRRNT domain.

SWISS:

Q13641

Gene ID:

7162

Database links:

[Entrez Gene: 7162](#) Human

[Entrez Gene: 21983](#) Mouse

[Entrez Gene: 83684](#) Rat

[Omim: 190920](#) Human

[SwissProt: Q13641](#) Human

[SwissProt: Q9Z0L0](#) Mouse

[SwissProt: Q5PQV5](#) Rat

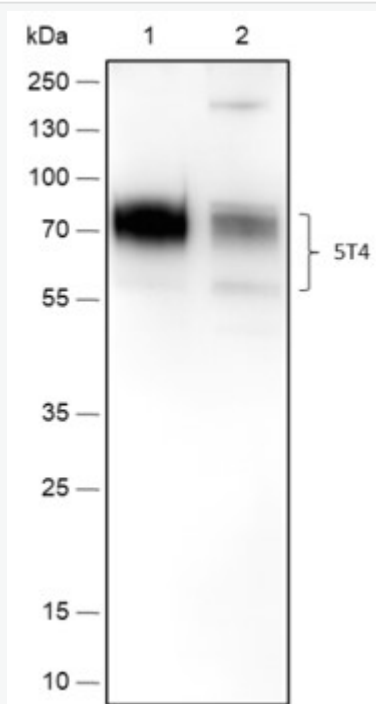
[Unigene: 82128](#) Human

[Unigene: 20864](#) Mouse

[Unigene: 484180](#) Mouse

[Unigene: 43122](#) Rat

Product Picture



Blocking buffer: 5% NFDN/TBST

Primary Ab dilution: 1:1000

Primary Ab incubation condition: 2 hours at room temperature

Secondary Ab: Goat Anti-Rabbit IgG H&L (HRP)

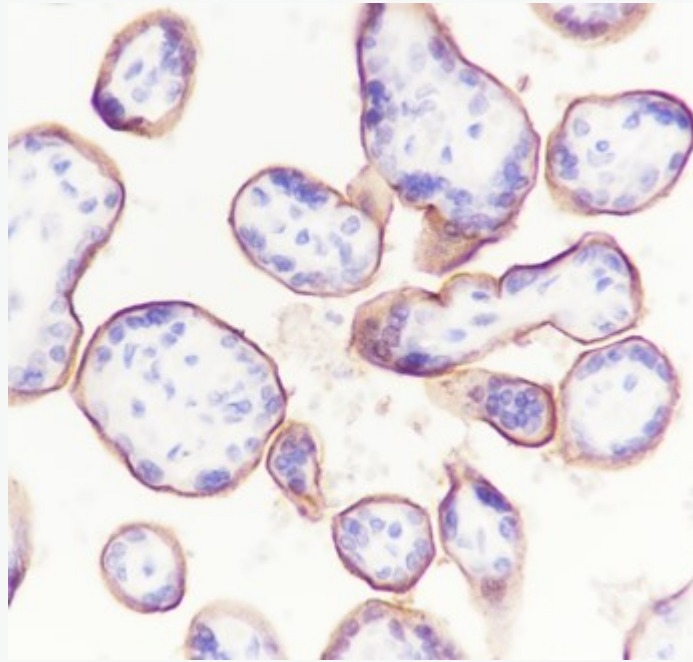
Lysate: 1: MCF-7, 2: JAR

Protein loading quantity: 20 μ g

Exposure time: 60 s

Predicted MW: 46 kDa

Observed MW: 70-80/85 kDa



Tissue: Human placenta

Section type: Formalin-fixed & Paraffin - embedded section

Retrieval method: High temperature and high pressure

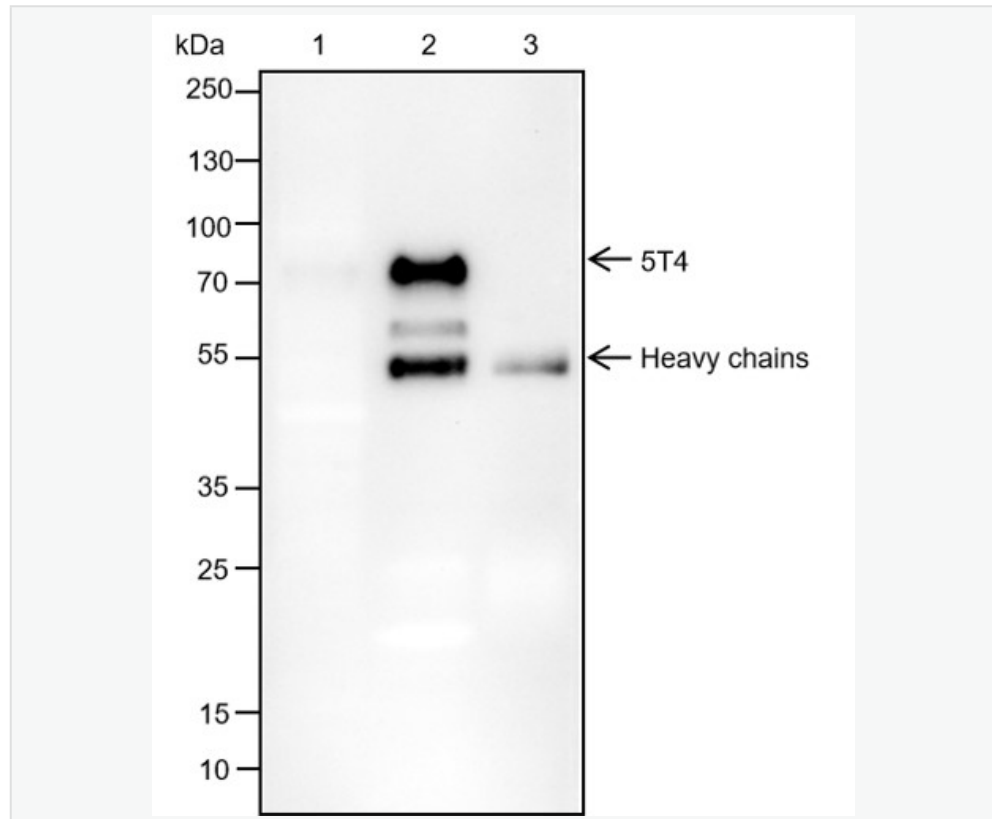
Retrieval buffer: Tris/EDTA buffer, pH 9.0 Primary Ab dilution: 1:2000

Primary Ab incubation condition: 1 hour at room temperature

Secondary Ab: Anti-Rabbit and Mouse Polymer HRP (Ready to use)

Counter stain: Hematoxylin (Blue)

Comment: Color brown is the positive signal for SLM-52422R



IP of MCF-7 cells extracts

IP ab incubation condition: PTM-6392, 4°C overnight, 1:100 dilution

WB primary ab incubation condition: SLM-52422R , room temperature
2h, 1:1000 dilution

Secondary ab: Anti-Rabbit IgG for IP (HRP)

Blocking buffer and concentration: 5% NFDM/TBST

Diluting buffer and concentration: 5% NFDM/TBST

1: 5% Input

2: IP with SLM-52422R

3: IP with Rabbit monoclonal IgG Isotype



Observed MW: 70-80/85 kDa

Exposure time: 120 s