

Rabbit Anti-MLKL antibody

SLM-52256R

| | |
|-------------------------------------|---|
| Product Name | MLKL |
| Chinese Name | 混合系列蛋白激酶样结构域 Recombinant rabbit monoclonal anti hMLKL; Mixed lineage kinase domain like; Mixed lineage kinase domain like protein; Mixed lineage kinase domain-like protein; mixed lineage kinase domain like pseudokinase; MLKL_HUMAN. |
| Alias | |
| Research Area | Cell biology Kinases and Phosphatases |
| Immunogen Species | Rabbit |
| Clonality | Monoclonal |
| Clone NO. | 3G4 |
| React Species | Human |
| Applications | WB=1:500-2000 (Paraffin sections need antigen repair) not yet tested in other applications. optimal dilutions/concentrations should be determined by the end user. |
| Theoretical molecular weight | 54kDa |
| Cellular localization | cytoplasmic The cell membrane |
| Form | Liquid |
| Concentration | 1mg/ml |
| immunogen | Recombinant Human MLKL protein: 350-471/471 |
| Lsotype | IgG |
| Purification | affinity purified by Protein A |
| Buffer Solution | 1M TBS(pH7.4) with 1% BSA, 3% Proclin300 and 50% Glycerol. |
| Storage | Shipped at 4°C. Store at -20 °C for one year. Avoid repeated freeze/thaw cycles. |
| Attention | This product as supplied is intended for research use only, not for use in human, therapeutic or diagnostic applications. |
| PubMed | PubMed |
| Product Detail | This gene belongs to the protein kinase superfamily. The encoded protein |

contains a protein kinase-like domain; however, is thought to be inactive because it lacks several residues required for activity. This protein plays a critical role in tumor necrosis factor (TNF)-induced necroptosis, a programmed cell death process, via interaction with receptor-interacting protein 3 (RIP3), which is a key signaling molecule in necroptosis pathway. Inhibitor studies and knockdown of this gene inhibited TNF-induced necrosis. High levels of this protein and RIP3 are associated with inflammatory bowel disease in children. Alternatively spliced transcript variants have been described for this gene. [provided by RefSeq, Sep 2015].

SWISS:
Q8NB16

Gene ID:
197259

Database links:

[Entrez Gene: 197259](#) Human

[Entrez Gene: 74568](#) Mouse

[Entrez Gene: 690743](#) Rat

[Omim: 615153](#) Human

[SwissProt: Q8NB16](#) Human

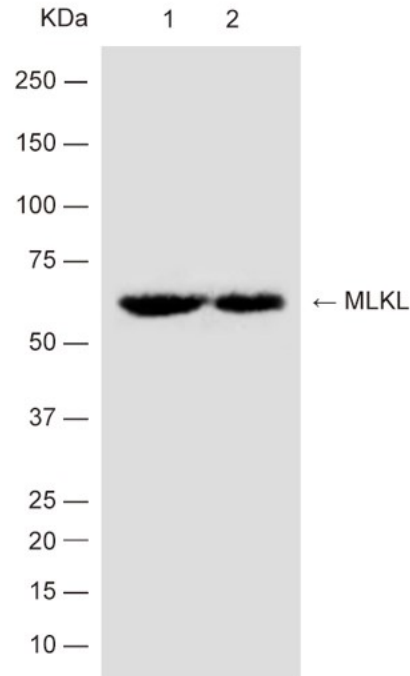
[SwissProt: Q9D2Y4](#) Mouse

[Unigene: 119878](#) Human

[Unigene: 207971](#) Mouse

[Unigene: 105677](#) Rat

**Product
Picture**



Blocking buffer: 5% NFDM/TBST

Primary Ab dilution: 1:1000

Primary Ab incubation condition: 2 hours at room temperature

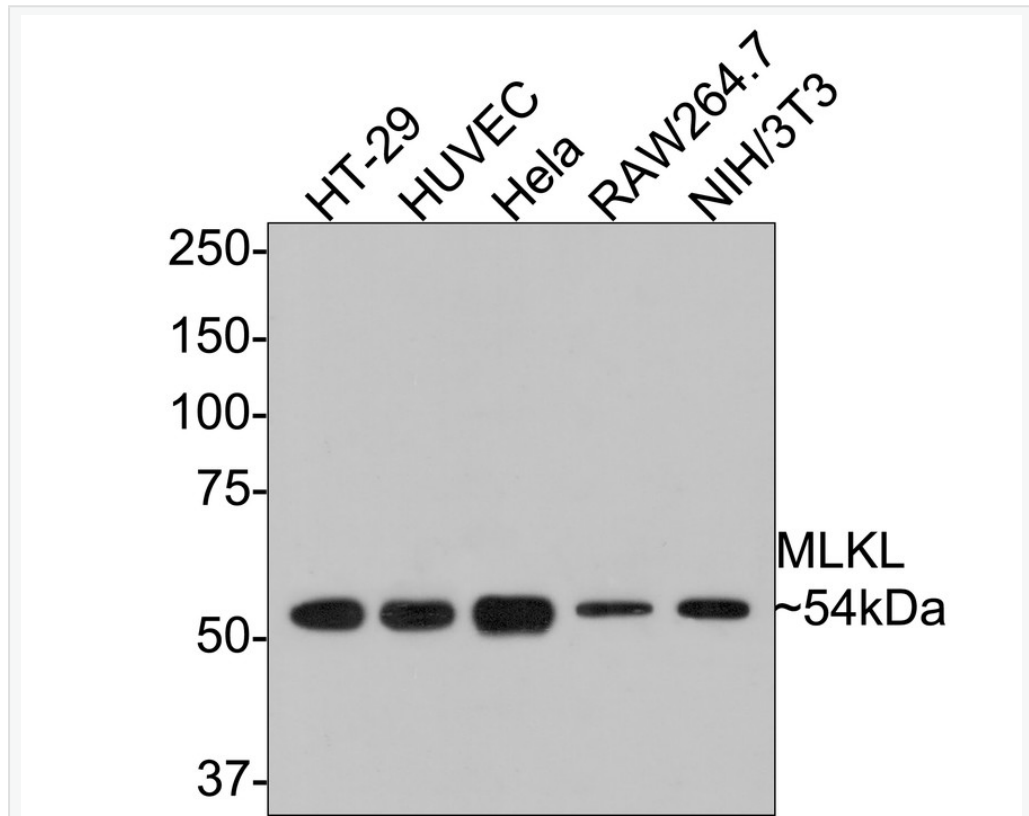
Secondary Ab: Goat Anti-Rabbit IgG H&L (HRP)

Lysate: 1: U251MG; 2: HeLa

Protein loading quantity: 20 μ g

Predicted MW: 55 kDa

Observed MW: 55 kDa



Western blot analysis of MLKL on different lysates with Rabbit anti-MLKL antibody (SLM-52256R) at 1/1,000 dilution.

Lane 1: HT-29 cell lysate

Lane 2: HUVEC cell lysate

Lane 3: HeLa cell lysate

Lane 4: RAW264.7 cell lysate Lane 5: NIH/3T3 cell lysate

Lysates/proteins at 10 μ g/Lane.

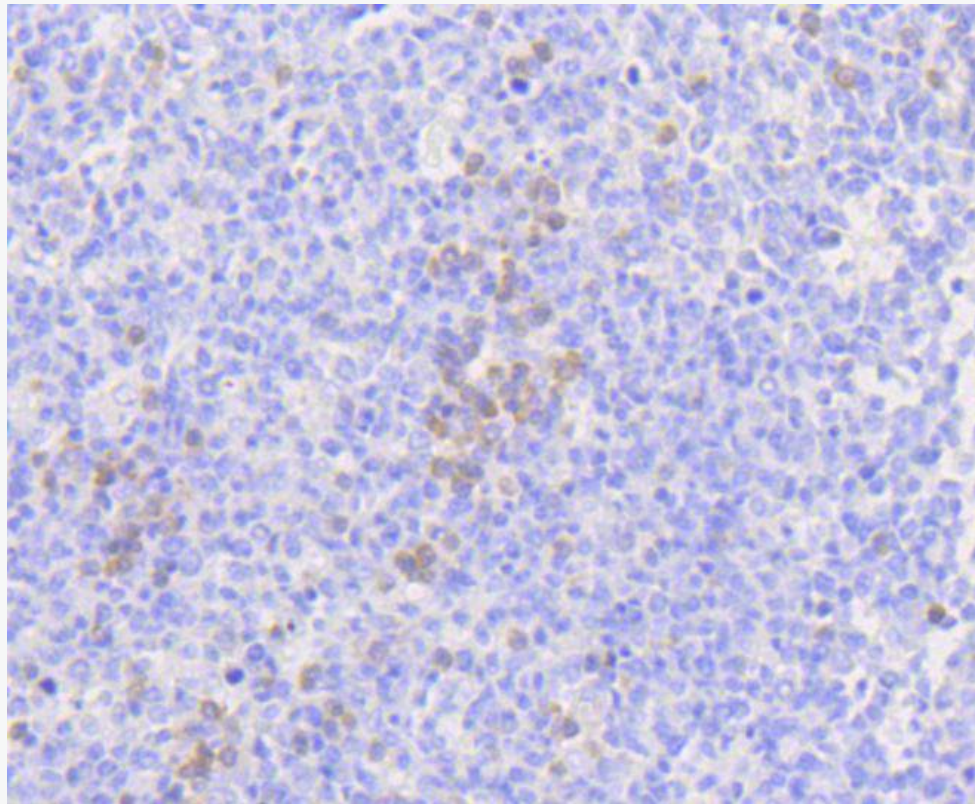
Predicted band size: 54 kDa

Observed band size: 54 kDa

Exposure time: 2 minutes;

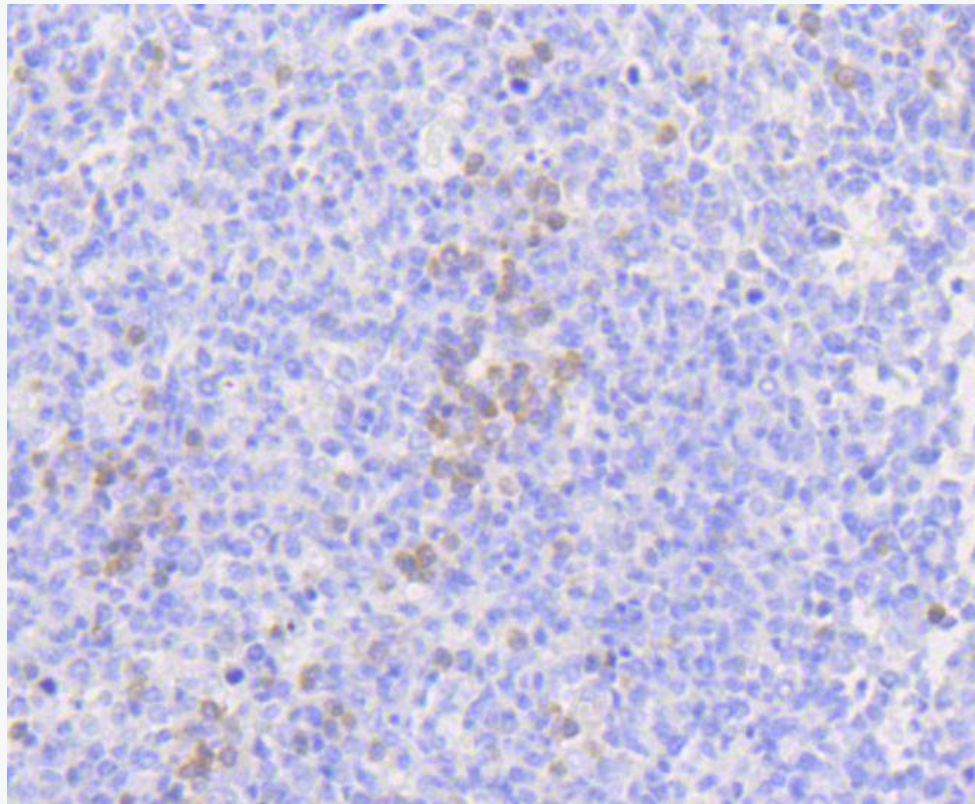
8% SDS-PAGE gel.

Proteins were transferred to a PVDF membrane and blocked with 5% NFDM/TBST for 1 hour at room temperature. The primary antibody (SLM-52256R) at 1/1,000 dilution was used in 5% NFDM/TBST at room temperature for 2 hours. Goat Anti-Rabbit IgG - HRP Secondary Antibody at 1:300,000 dilution was used for 1 hour at room temperature.



Immunohistochemical analysis of paraffin-embedded human tonsil tissue using anti-MLKL antibody. The section was pre-treated using heat mediated antigen retrieval with Tris-EDTA buffer (pH 9.0) for 20 minutes. The tissues

were blocked in 1% BSA for 30 minutes at room temperature, washed with ddH₂O and PBS, and then probed with the primary antibody (SLM-52256R, 1/50) for 30 minutes at room temperature. The detection was performed using an HRP conjugated compact polymer system. DAB was used as the chromogen. Tissues were counterstained with hematoxylin and mounted with DPX.



Immunohistochemical analysis of paraffin-embedded human tonsil tissue using anti-MLKL antibody. The section was pre-treated using heat mediated antigen retrieval with Tris-EDTA buffer (pH 9.0) for 20 minutes. The tissues

were blocked in 1% BSA for 30 minutes at room temperature, washed with ddH₂O and PBS, and then probed with the primary antibody (SLM-52256R, 1/50) for 30 minutes at room temperature. The detection was performed using an HRP conjugated compact polymer system. DAB was used as the chromogen. Tissues were counterstained with hematoxylin and mounted with DPX.