

Rabbit Anti-phospho-CDC37 (Ser13)antibody

SLM-52137R

Product Name	phospho-CDC37 (Ser13)
Chinese Name	Hsp90 辅助伴侣分子 CDC37Recombinant rabbit monoclonal anti Cdc37 (phospho S13); Cdc37 (phospho Ser13); p-Cdc37 (phospho S13); CDC37; CDC37_HUMAN; Hsp90 co-chaperone Cdc37; CDC37A; Hsp90 chaperone protein kinase-targeting subunit; p50Cdc37; Hsp90 co-chaperone Cdc37, N-terminally processed; cell division cycle 37, HSP90 cochaperone; P50CDC37;
Alias	
Product Type	Phosphorylated anti Recombinant rabbit monoclonal anti
Research Area	Cell biology Cyclin Kinases and Phosphatases
Immunogen Species	Rabbit
Clonality	Monoclonal
Clone NO.	8A1
React Species	Human, Mouse, Rat, WB=1:1000-2000
Applications	not yet tested in other applications. optimal dilutions/concentrations should be determined by the end user.
Theoretical molecular weight	44kDa
Cellular localization	cytoplasmic
Form	Liquid
Concentration	1mg/ml
immunogen	KLH conjugated synthesised phosphopeptide derived from human CDC37 around the phosphorylation site of Ser13: EV(p-S)DD
Lsotype	IgG
Purification	affinity purified by Protein A
Buffer Solution	1M TBS(pH7.4) with 1% BSA, 3% Proclin300 and 50% Glycerol.
Storage	Shipped at 4°C. Store at -20 °C for one year. Avoid repeated freeze/thaw cycles.
Attention	This product as supplied is intended for research use only, not for use in

human, therapeutic or diagnostic applications.

PubMed

[PubMed](#)

The protein encoded by this gene is highly similar to Cdc 37, a cell division cycle control protein of *Sacchomyces cerevisiae*. This protein is a molecular chaperone with specific function in cell signal transduction. It has been shown to form complex with Hsp90 and a variety of protein kinases including CDK4, CDK6, SRC, RAF-1, MOK, as well as eIF2 alpha kinases. It is thought to play a critical role in directing Hsp90 to its target kinases. [provided by RefSeq, Jul 2008]

Function:

Co-chaperone that binds to numerous kinases and promotes their interaction with the Hsp90 complex, resulting in stabilization and promotion of their activity.

Subcellular Location:

Cytoplasm.

Post-translational modifications:

Constitutively sumoylated by UBE2I.

Similarity:

Belongs to the CDC37 family.

Product Detail

SWISS:

Q16543

Gene ID:

11140

Database links:

[Entrez Gene: 11140](#) Human

[Entrez Gene: 12539](#) Mouse

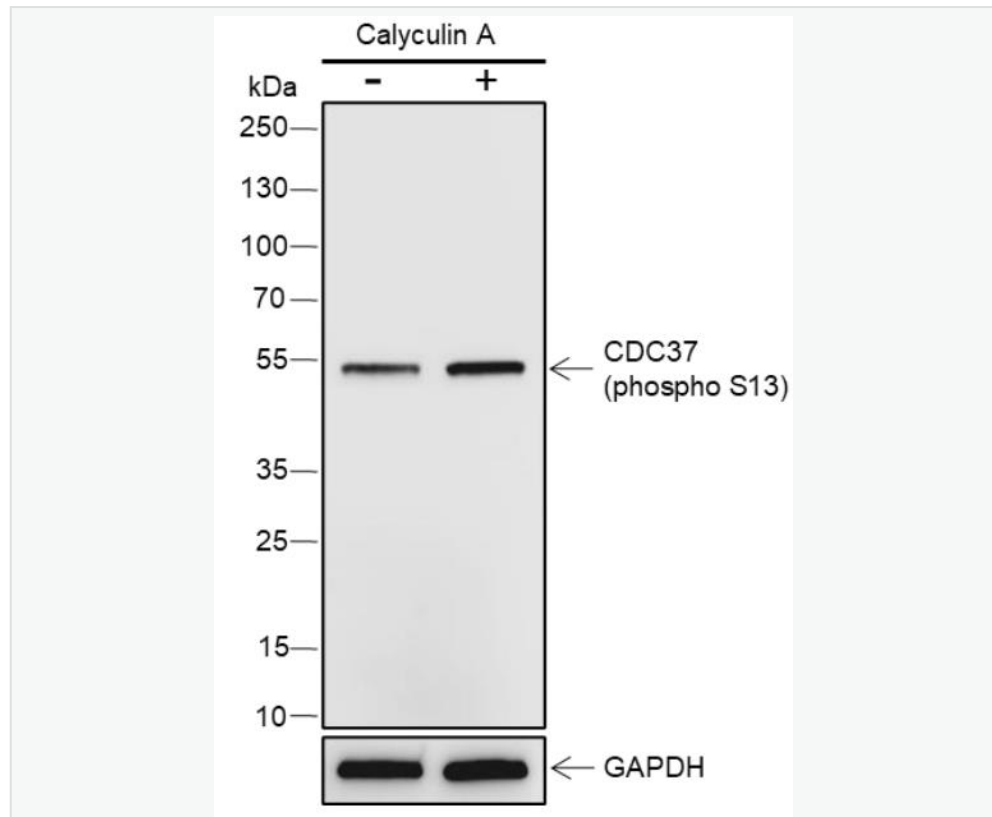
[Entrez Gene: 114562](#) Rat

[SwissProt: Q16543](#) Human

[SwissProt: Q61081](#) Mouse

[SwissProt: Q63692](#) Rat

Product Picture



Blocking buffer: 5% NFDN/TBST

Primary Ab dilution: 1:2000

Primary Ab incubation condition: 2 hours at
room temperature

Secondary Ab: Goat Anti-Rabbit IgG H&L
(HRP)

Lysate:

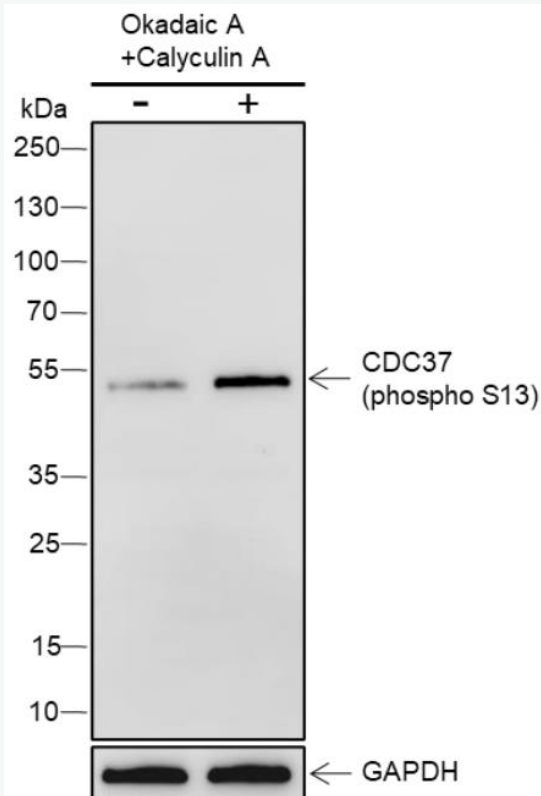
-): C6, (+): C6 + Calyculin A
(100nM, 30min)

Protein loading quantity: 20 μ g

Exposure time: 30 s

Predicted MW: 50 kDa

Observed MW: 50 kDa



Blocking buffer: 5% NFDN/TBST

Primary Ab dilution: 1:2000

Primary Ab incubation condition: 2 hours at
room temperature

Secondary Ab: Goat Anti-Rabbit IgG H&L
(HRP)

Lysate: (-): HeLa, (+): HeLa + Okadaic A

(100nM,60min) + Calyculin A (100nM,60min)

Protein loading quantity: 20 μ g

Exposure time: 30 s

Predicted MW: 50 kDa

Observed MW: 50 kDa