

Rabbit Anti-A-RAF antibody

SLM-52015R

Product Name A-RAF

Chinese Name A-RafRecombinant rabbit monoclonal anti

Alias A raf 1; A-Raf; Raf1; A Raf proto oncogene serine/threonine protein kinase; ARAF 1; ARAF; A proto oncogene serine/threonine protein kinase; ARAF1; Oncogene Araf1; Oncogene PKS2; PK PKS; PKS2; Proto oncogene Pks; RAFA 1; RAFA1; Ras binding protein DA Raf; v raf murine s 3611 viral oncogene homolog; v raf murine sarcoma 3611 viral oncogene homolog 1; v raf onco homolog 1 (murine sarcoma 3611 virus).

Research Area Tumour Cell biology immunology Neurobiology Signal transduction transcriptional regulatory f Kinases and Phosphatases

Immunogen Species Rabbit

Clonality Monoclonal

Clone NO. 24D1

React Species Human,
WB=1:500-2000,IHC-P=1:50-200,IHC-F=1:50-200,ICC/IF=1:50-200,IF=1:50-200,Flow-Cyt=1
(Paraffin sections need antigen repair)

Applications not yet tested in other applications.
optimal dilutions/concentrations should be determined by the end user.

Theoretical molecular weight 68kDa

Cellular localization cytoplasmic

Form Liquid

Concentration 1mg/ml

immunogen Recombinant human A-RAF protein (150-300aa)

Lsotype IgG

Purification affinity purified by Protein A

Buffer Solution 1M TBS(pH7.4) with 1% BSA, 3% Proclin300 and 50% Glycerol.

Storage Shipped at 4°C. Store at -20 °C for one year. Avoid repeated freeze/thaw cycles.



Attention

This product as supplied is intended for research use only, not for use in human, therapeutic or diagnostic applications.

PubMed

[PubMed](#)

The RAF family of signaling proteins has three isoforms: A RAF, RAF 1 and B RAF. These proteins are instrumental in forwarding the stimulus generated by mitogens from monomeric G proteins to the MAP kinase pathway. RAF 1 is known to be downstream of Ras and binds to it by an N terminal noncatalytic domain. This domain is conserved in A RAF and B RAF. 14-3-3 is also known to be an activator of RAFs. Activated RAF directly phosphorylates and activates MEK. A RAF is expressed at a very high concentration in urogenital and kidney tissues.

Function:

Involved in the transduction of mitogenic signals from the cell membrane to the nucleus.

Tissue Specificity:

Predominantly in urogenital tissues.

Similarity:

Belongs to the protein kinase superfamily. TKL Ser/Thr protein kinase family. RAF subfamily. Contains 1 phorbol-ester/DAG-type zinc finger.

**Product
Detail**

Contains 1 protein kinase domain.

Contains 1 RBD (Ras-binding) domain.

SWISS:

P10398

Gene ID:

369

Database links:

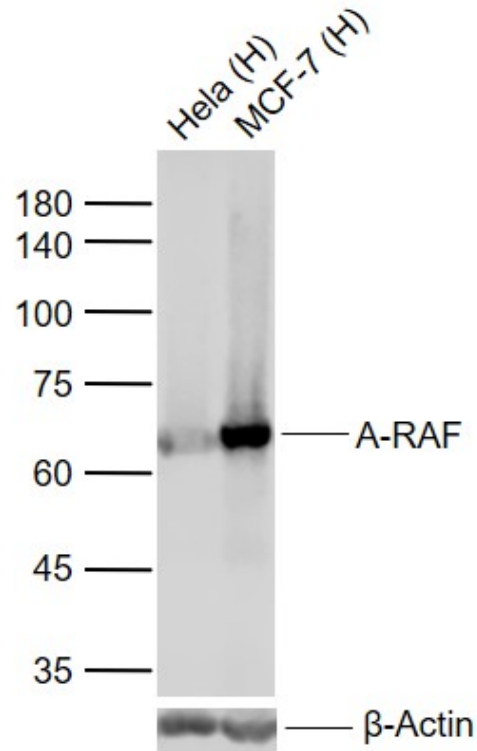
[Entrez Gene: 369](#) Human

[Omim: 311010](#) Human

[SwissProt: P10398](#) Human

[Unigene: 446641](#) Human

**Product
Picture**



Sample:

Lane 1: Human HeLa cell lysates

Lane 2: Human MCF-7 cell lysates

Primary: Anti-A-RAF (SLM-52015R) at 1/1000 dilution

Secondary: IRDye800CW Goat Anti-Rabbit IgG at 1/20000 dilution

Predicted band size: 68 kDa

Observed band size: 65 kDa