

Mouse Anti-FKBP1A antibody

SLM-51753M

Product Name	FKBP1A
Chinese Name	FKBP1A 单克隆抗体
Alias	FKBP12; FKBP1A_HUMAN; 12 kDa FK506-binding protein; 12 kDa FKBP; FK506 binding protein 1; FK506 binding protein 12; FK506 binding protein 1A 12kDa; FK506 binding protein 1A; FK506 binding protein T cell 12 kD; FK506-binding protein 1A; FKBP 12; FKBP 1A; FKBP-12; FKBP-1A; FKBP1; FKBP12 Exip3; FKBP12C; Immunophilin FKBP12; Peptidyl prolyl cis trans isomerase; Peptidyl-prolyl cis-trans isomerase; Peptidyl-prolyl cis-trans isomerase FKBP1A; PKC12; PKCI2; PPIase; PPIase FKBP1A; Protein kinase C inhibitor 2; Rotamase.
Research Area	immunology
Immunogen Species	Mouse
Clonality	Monoclonal
Clone NO.	D3J6
React Species	Human, Mouse, Rat, WB=1:500-2000
Applications	not yet tested in other applications. optimal dilutions/concentrations should be determined by the end user.
Theoretical molecular weight	12kDa
Cellular localization	cytoplasmic
Form	Liquid
Concentration	1mg/ml
immunogen	KLH conjugated synthetic peptide derived from human FKBP1A
Lsotype	IgG1, κ
Purification	affinity purified by Protein G
Buffer Solution	1M TBS(pH7.4) with 1% BSA, 3% Proclin300 and 50% Glycerol.
Storage	Shipped at 4°C. Store at -20 °C for one year. Avoid repeated freeze/thaw cycles.

Attention

This product as supplied is intended for research use only, not for use in human, therapeutic or diagnostic applications.

PubMed

[PubMed](#)

The protein encoded by this gene is a member of the immunophilin protein family, which play a role in immunoregulation and basic cellular processes involving protein folding and trafficking. The protein is a cis-trans prolyl isomerase that binds the immunosuppressants FK506 and rapamycin. It interacts with several intracellular signal transduction proteins including type I TGF-beta receptor. It also interacts with multiple intracellular calcium release channels, and coordinates multi-protein complex formation of the tetrameric skeletal muscle ryanodine receptor. In mouse, deletion of this homologous gene causes congenital heart disorder known as noncompaction of left ventricular myocardium. Multiple alternatively spliced variants, encoding the same protein, have been identified. The human genome contains five pseudogenes related to this gene, at least one of which is transcribed. [provided by RefSeq, Sep 2008]

Function:

May play a role in modulation of ryanodine receptor isoform-1 (RYR-1), a component of the calcium release channel of skeletal muscle sarcoplasmic reticulum. There are four molecules of FKBP12 per skeletal muscle RYR. PPIases accelerate the folding of proteins. It catalyzes the cis-trans isomerization of proline imidic peptide bonds in oligopeptides.

Product Detail

Subcellular Location:

Cytoplasm.

Similarity:

Belongs to the FKBP-type PPIase family. FKBP1 subfamily. Contains 1 PPIase FKBP-type domain.

SWISS:

P62942

Gene ID:

2280

Database links:

[Entrez Gene: 2280](#) Human

[Entrez Gene: 14225](#) Mouse

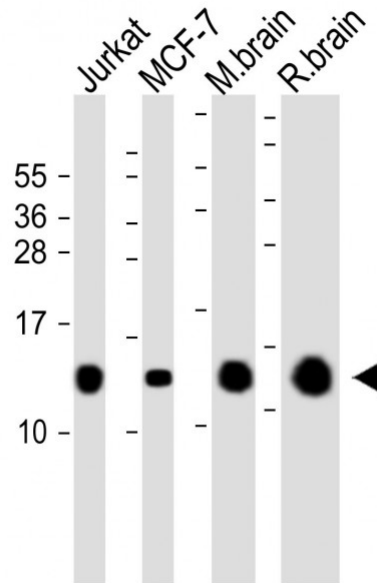
[Entrez Gene: 25639](#) Rat

[SwissProt: P62942](#) Human

[SwissProt: P26883](#) Mouse

[SwissProt: Q62658](#) Rat

Product Picture



Sample:

Lane 1: Jurkat cell lysates

Lane 2: MCF-7 cell lysates

Lane 3: Mouse brain tissue lysates

Lane 4: Rat brain tissue lysates

Primary: Anti-FKBP1A (SLM-51753M) at 1/4000 dilution



SunLong Biotech Co.,LTD

Tel: 0086-571-56623320 Fax:0086-571-56623318

E-mail:sales@sunlongbiotech.com

www.sunlongbiotech.com

Secondary: IRDye800CW Goat Anti-Mouse IgG at 1/20000 dilution

Predicted band size: 12 kD

Observed band size: 12 kD