

Mouse Anti-GDF15 antibody

SLM-51752M

Product Name	GDF15
Chinese Name	生长分化因子 15/巨嗜细胞抑制因子 1 单克隆抗体
Alias	GDF 15; GDF-15; GDF15_HUMAN; Growth differentiation factor 15; Growth/differentiation factor 15; Macrophage inhibitory cytokine 1; MIC 1; Mic-1; MIC1; NAG 1; NAG-1; NAG1; NRG 1; NRG-1; NRG1; NSAID (nonsteroidal anti inflammatory drug) activated protein 1; NSAID; NSAID regulated protein 1; NSAID-activated gene 1 protein; NSAID-regulated gene 1 protein; PDF; PLAB; Placental bone morphogenetic protein; Placental bone morphogenic protein; Placental TGF beta; Placental TGF-beta; Prostate differentiation factor; PTGF beta; PTGFB.
Research Area	Cardiovascular Cell biology Signal transduction Cyclin Cell differentiation
Immunogen Species	Mouse
Clonality	Monoclonal
Clone NO.	G7F6
React Species	Human, WB=1:500-2000
Applications	not yet tested in other applications. optimal dilutions/concentrations should be determined by the end user.
Theoretical molecular weight	12.5/34kDa
Cellular localization	Secretory protein
Form	Liquid
Concentration	1mg/ml
immunogen	Recombinant human GDF15.
Lsotype	IgG1, κ
Purification	affinity purified by Protein G
Buffer Solution	1M TBS(pH7.4) with 1% BSA, 3% Proclin300 and 50% Glycerol.
Storage	Shipped at 4°C. Store at -20 °C for one year. Avoid repeated freeze/thaw cycles.

Attention

This product as supplied is intended for research use only, not for use in human, therapeutic or diagnostic applications.

PubMed

[PubMed](#)

Growth differentiation factor 15 (GDF15) is a member of the bone morphogenetic protein (BMP) family and the TGF-beta superfamily. It has been implicated in a variety of functions directly related to tumorigenicity including antiproliferative and pro-apoptotic effects. BMP proteins are secreted growth factors that are characterized by seven conserved cysteine residues. In general, they are regulators of cell growth and differentiation in both embryonic and adult tissues. GDF15 is an important downstream mediator of DNA damage signaling and a transcriptional target of p53.

Subcellular Location:

Secreted.

Tissue Specificity:

Highly expressed in placenta, with lower levels in prostate and colon and some expression in kidney.

Product Detail

Similarity:

Belongs to the TGF-beta family.

SWISS:

Q99988

Gene ID:

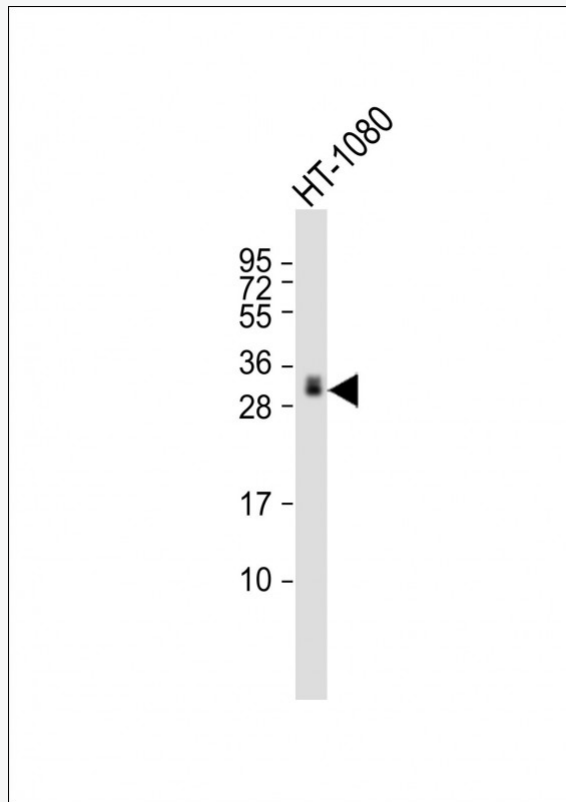
9518

Database links:

[Entrez Gene: 9518](#) Human

[SwissProt: Q99988](#) Human

Product Picture



Sample:

Lane 1: HT-1080 cell lysates

Primary: Anti-GDF15 (SLM-51751M) at 1/4000 dilution

Secondary: IRDye800CW Goat Anti-Mouse IgG at 1/20000 dilution

Predicted band size: 12.5/34 kD

Observed band size: 32 kD