

Mouse Anti-Calreticulin antibody

SLM-51748M

Product Name Calreticulin

Chinese Name 钙网蛋白单克隆抗体

Alias Autoantigen RO; CALR; CALR protein; CALR_HUMAN; cC1qR; CRP55; CRTIC; Endoplasmic reticulum resident protein 60; ERp60; grp60; HACBP; RO; Sicca syndrome antigen A; SSA.

Research Area Tumour Signal transduction Cell type markers TumourCell biologyMaker The new supersedes the old

Immunogen Species Mouse

Clonality Monoclonal

Clone NO. G3F7

React Species Human, Mouse, Rat,
WB=1:500-2000,IHC-P=1:100-500,IHC-F=1:400-800,IF=1:100-500

Applications not yet tested in other applications.
optimal dilutions/concentrations should be determined by the end user.

Theoretical molecular weight 44kDa

Cellular localization cytoplasmic The cell membrane Extracellular matrix Secretory protein

Form Liquid

Concentration 1mg/ml

immunogen Recombinant human CALR.

Lsotype IgG1, κ

Purification affinity purified by Protein G

Buffer Solution 1M TBS(pH7.4) with 1% BSA, 3% Proclin300 and 50% Glycerol.

Storage Shipped at 4°C. Store at -20 °C for one year. Avoid repeated freeze/thaw cycles.

Attention This product as supplied is intended for research use only, not for use in human, therapeutic or diagnostic applications.

PubMed [PubMed](#)

Calreticulin is a highly conserved chaperone protein which resides primarily in the endoplasmic reticulum, and is involved in a variety of cellular processes, among them, cell adhesion. Additionally, it functions in protein folding quality control and calcium homeostasis. Calreticulin is also found in the nucleus, suggesting that it may have a role in transcription regulation. Systemic lupus erythematosus is associated with increased autoantibody titers against calreticulin. Recurrent mutations in calreticulin have been linked to various neoplasms, including the myeloproliferative type.[provided by RefSeq, May 2020]

Subunit:

Monomer. Component of an EIF2 complex at least composed of CELF1/CUGBP1, CALR, CALR3, EIF2S1, EIF2S2, HSP90B1 and HSPA5. Interacts with PDIA3/ERp57 (By similarity). Interacts with NR3C1 and TRIM21. Interacts with GABARAP.

Subcellular Location:

Endoplasmic reticulum lumen. Cytoplasm, cytosol. Secreted, extracellular space, extracellular matrix. Cell surface.

**Product
Detail**

Similarity:

Belongs to the calreticulin family.

SWISS:

P27797

Gene ID:

811

Database links:

[Entrez Gene: 811](#) Human

[Entrez Gene: 12317](#) Mouse

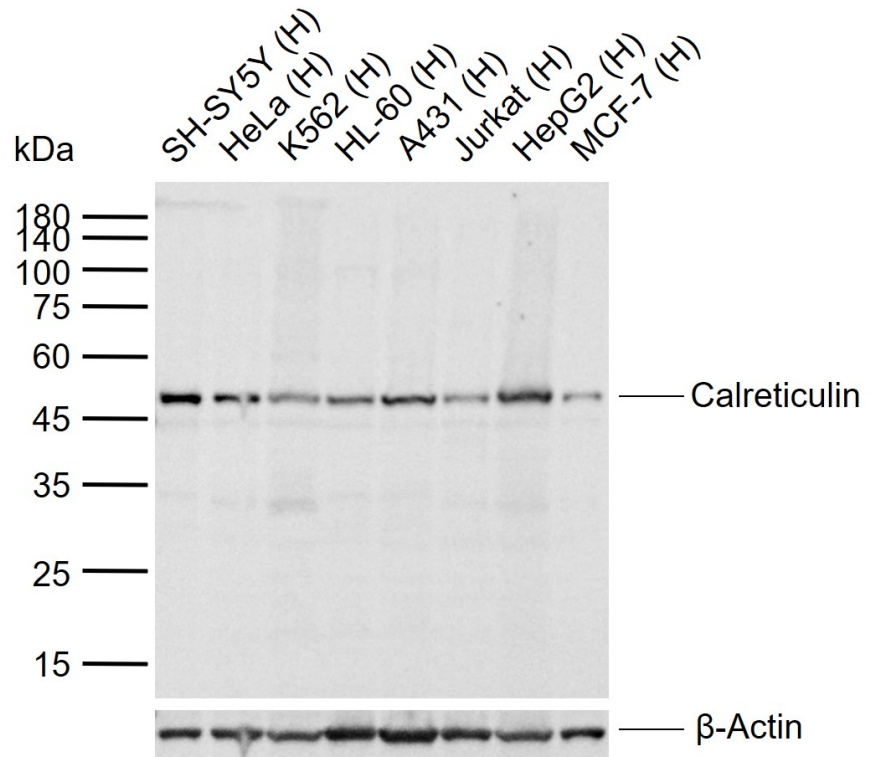
[Entrez Gene: 64202](#) Rat

[SwissProt: P27797](#) Human

[SwissProt: P14211](#) Mouse

[SwissProt: P18418](#) Rat

**Product
Picture**



Sample:

Lane 1: Human SH-SY5Y cell lysates

Lane 2: Human HeLa cell lysates

Lane 3: Human K562 cell lysates

Lane 4: Human HL-60 cell lysates

Lane 5: Human A431 cell lysates

Lane 6: Human Jurkat cell lysates

Lane 7: Human HepG2 cell lysates

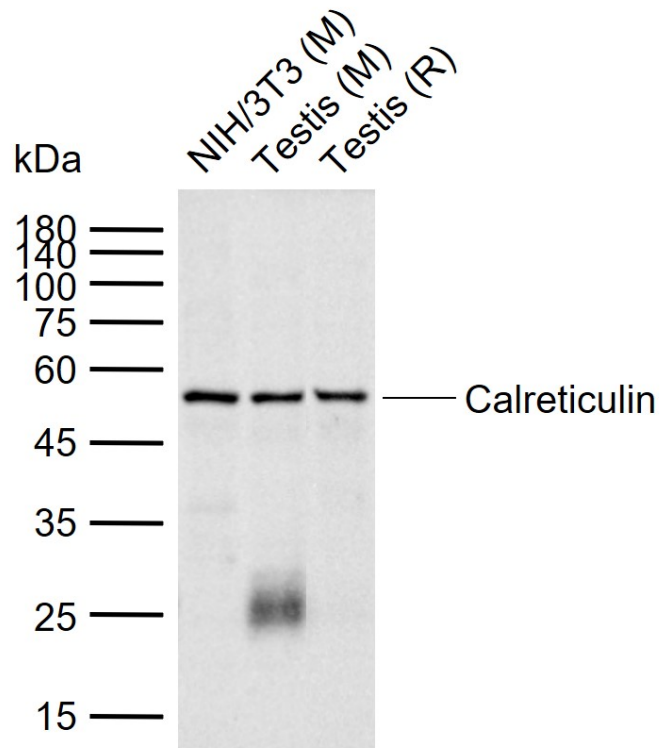
Lane 8: Human MCF-7 cell lysates

Primary: Anti-Calreticulin (SLM-51748M) at 1/1000 dilution

Secondary: Alexa Fluor 790 AffiniPure Goat Anti-Mouse IgG, light chain specific

Predicted band size: 44 kDa

Observed band size: 50 kDa



Sample:

Lane 1: Mouse NIH/3T3 cell lysates

Lane 2: Mouse Testis tissue lysates

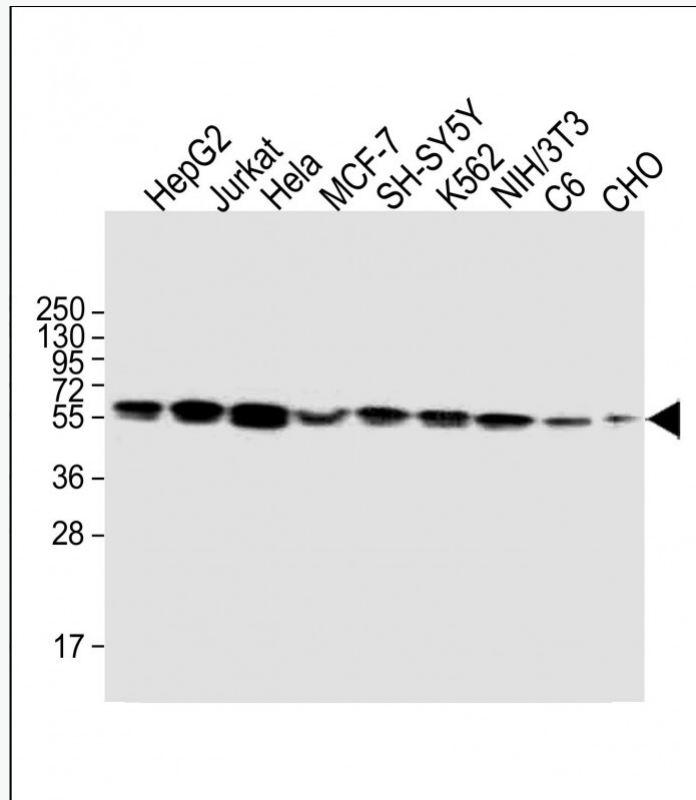
Lane 3: Rat Testis tissue lysates

Primary: Anti-Calreticulin (SLM-51748M) at 1/1000 dilution

Secondary: Alexa Fluor 790 AffiniPure Goat Anti-Mouse IgG, light chain specific

Predicted band size: 44 kDa

Observed band size: 55 kDa



Sample:

Lane 1: HepG2 cell lysates

Lane 2: Jurkat cell lysates

Lane 3: Hela cell lysates

Lane 4: MCF-7 cell lysates

Lane 5: SH-SY5Y cell lysates

Lane 6: K562 cell lysates

Lane 7: NIH/3T3 cell lysates

Lane 8: C6 cell lysates

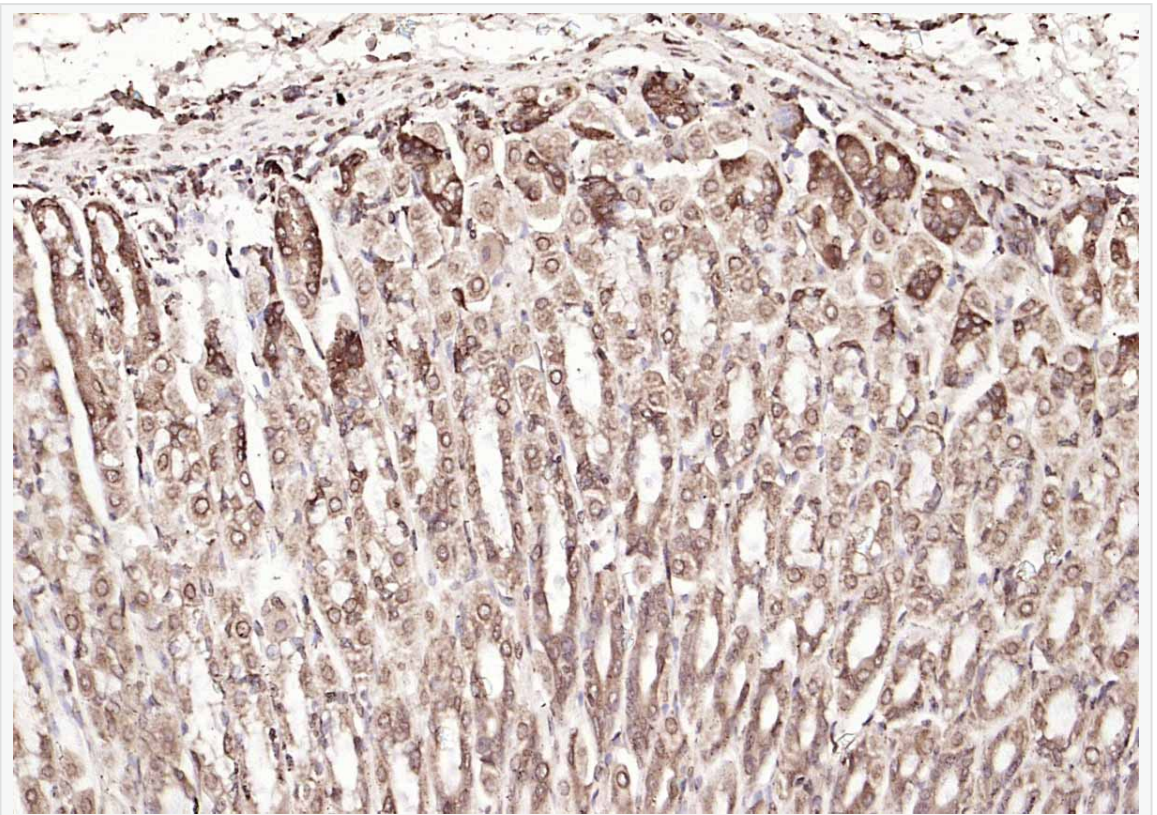
Lane 9: CHO cell lysates

Primary: Anti-Calreticulin (SLM-51748M) at 1/2000 dilution

Secondary: IRDye800CW Goat Anti-Mouse IgG at 1/20000 dilution

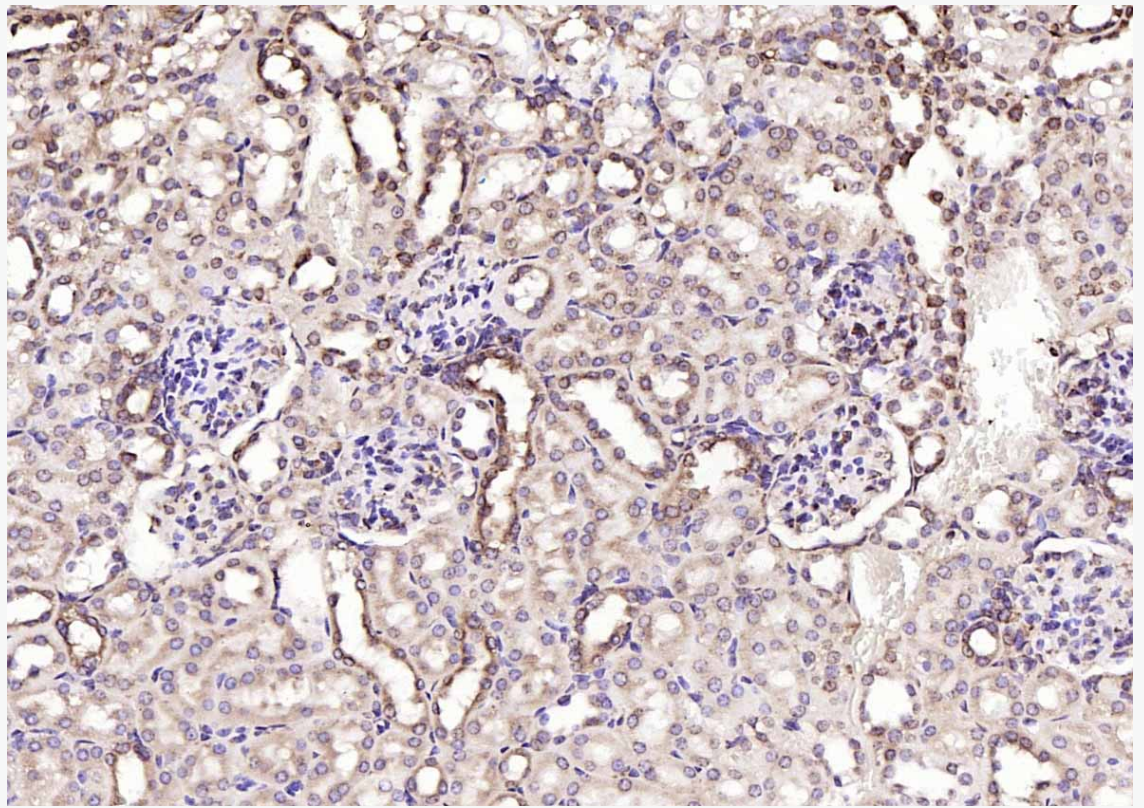
Predicted band size: 44 kD

Observed band size: 56 kD



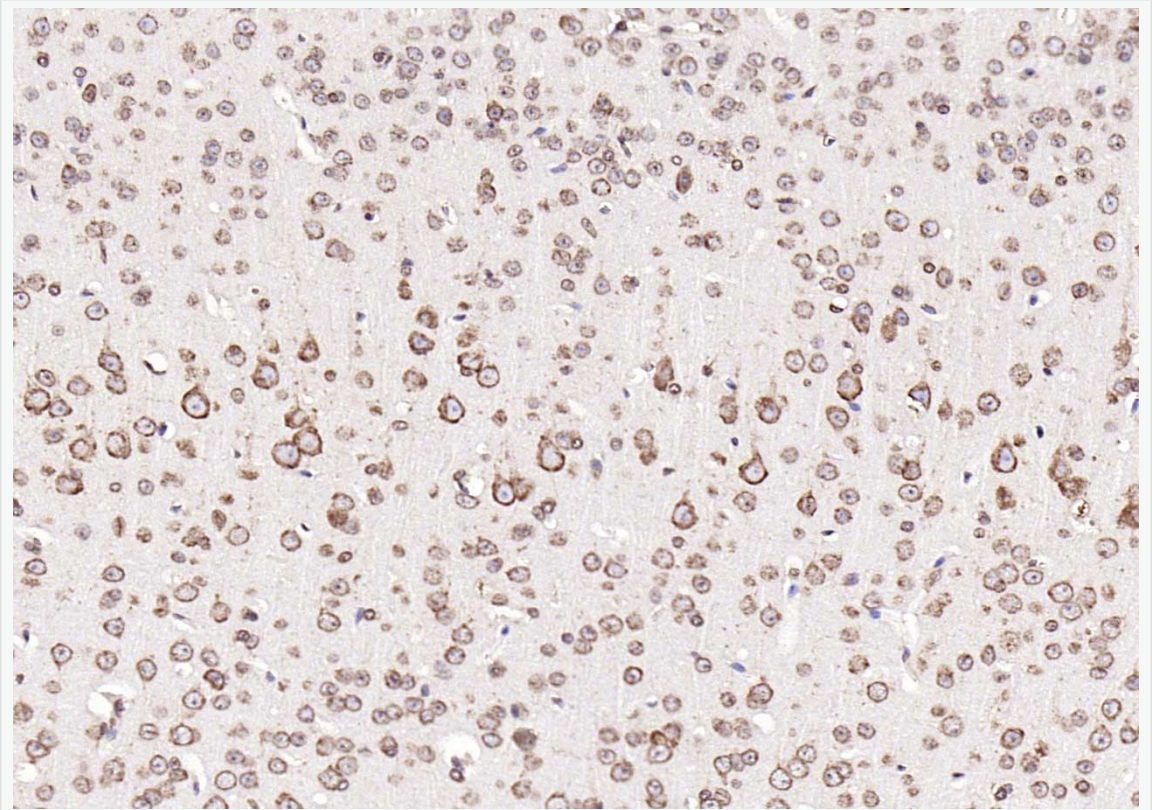
Paraformaldehyde-fixed, paraffin embedded (mouse stomach); Antigen retrieval by boiling in sodium citrate buffer (pH6.0) for 15min; Block endogenous peroxidase by

3% hydrogen peroxide for 20 minutes; Blocking buffer (normal goat serum) at 37°C for 30min; Antibody incubation with (Calreticulin) Monoclonal Antibody, Unconjugated (SLM-51748M) at 1:200 overnight at 4°C, followed by operating according to SP Kit(Mouse)(sp-0024) instructions and DAB staining.

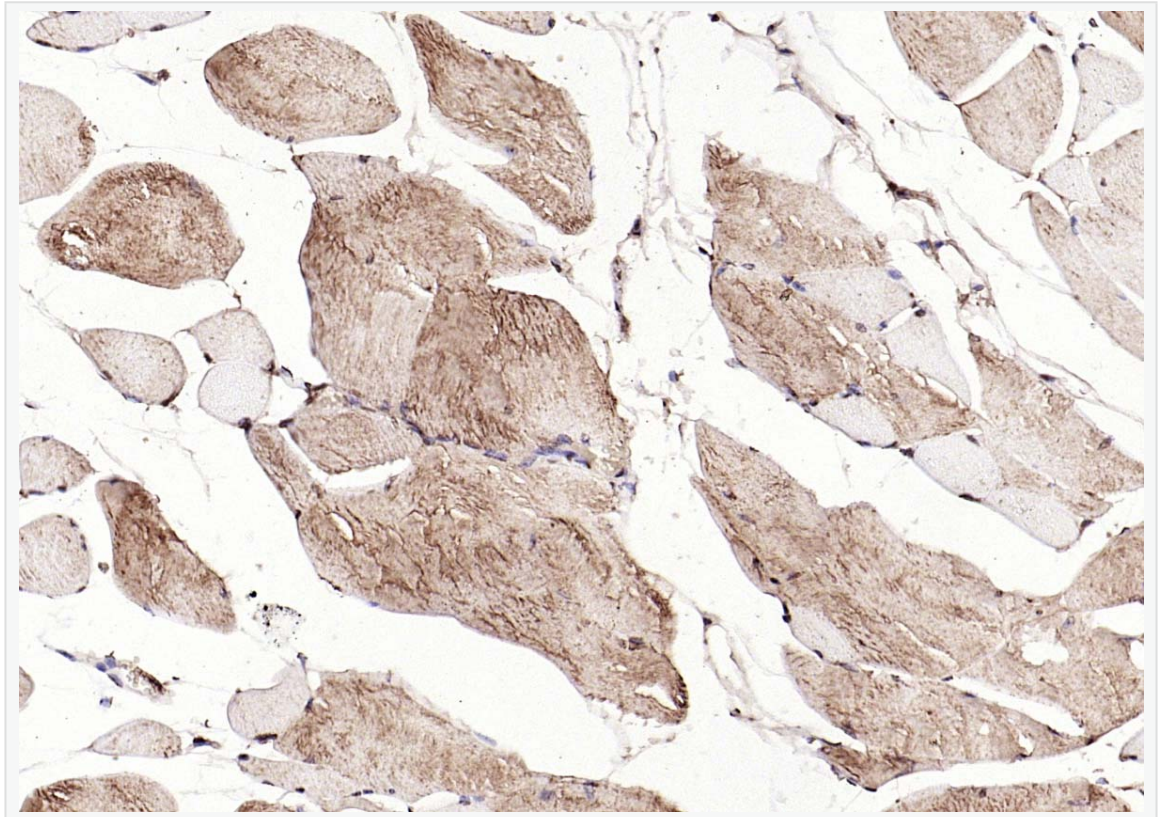


Paraformaldehyde-fixed, paraffin embedded (mouse kidney); Antigen retrieval by boiling in sodium citrate buffer (pH6.0) for 15min; Block endogenous peroxidase by 3% hydrogen peroxide for 20 minutes; Blocking buffer (normal goat serum) at 37°C for 30min; Antibody incubation with (Calreticulin) Monoclonal Antibody, Unconjugated (SLM-51748M) at 1:200 overnight at 4°C, followed by operating according to SP

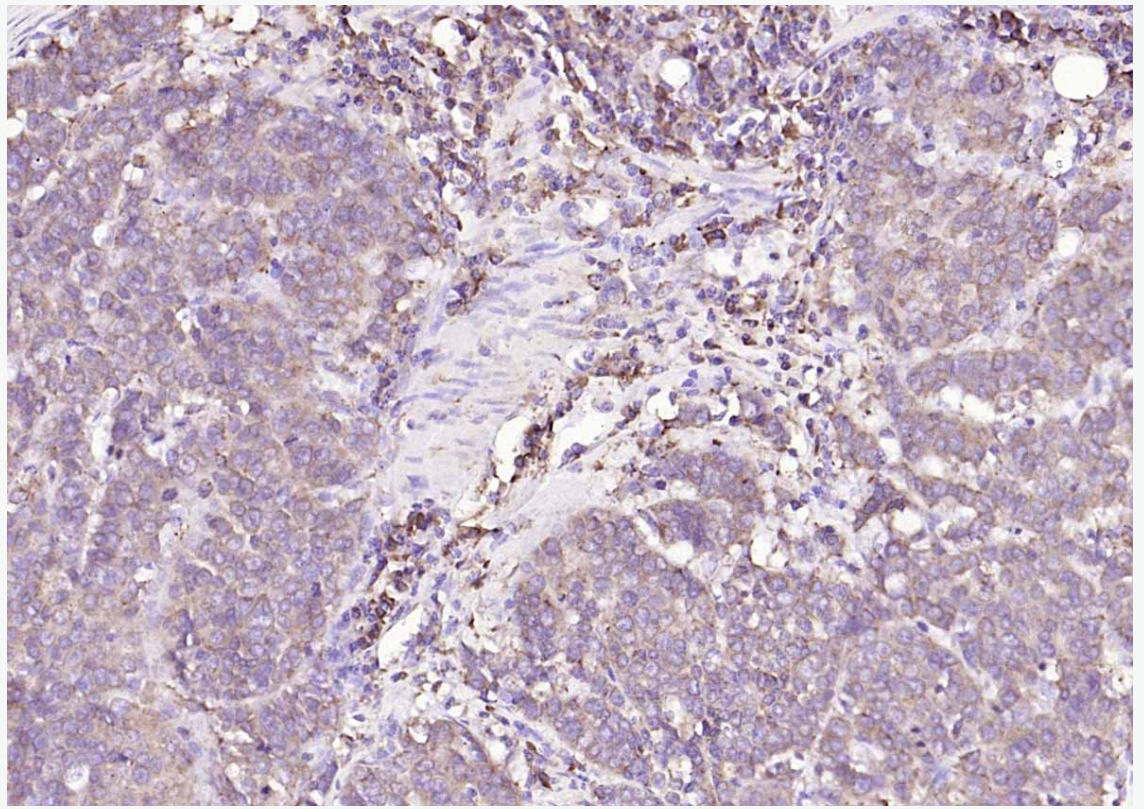
Kit(Mouse)(sp-0024) instructionsand DAB staining.



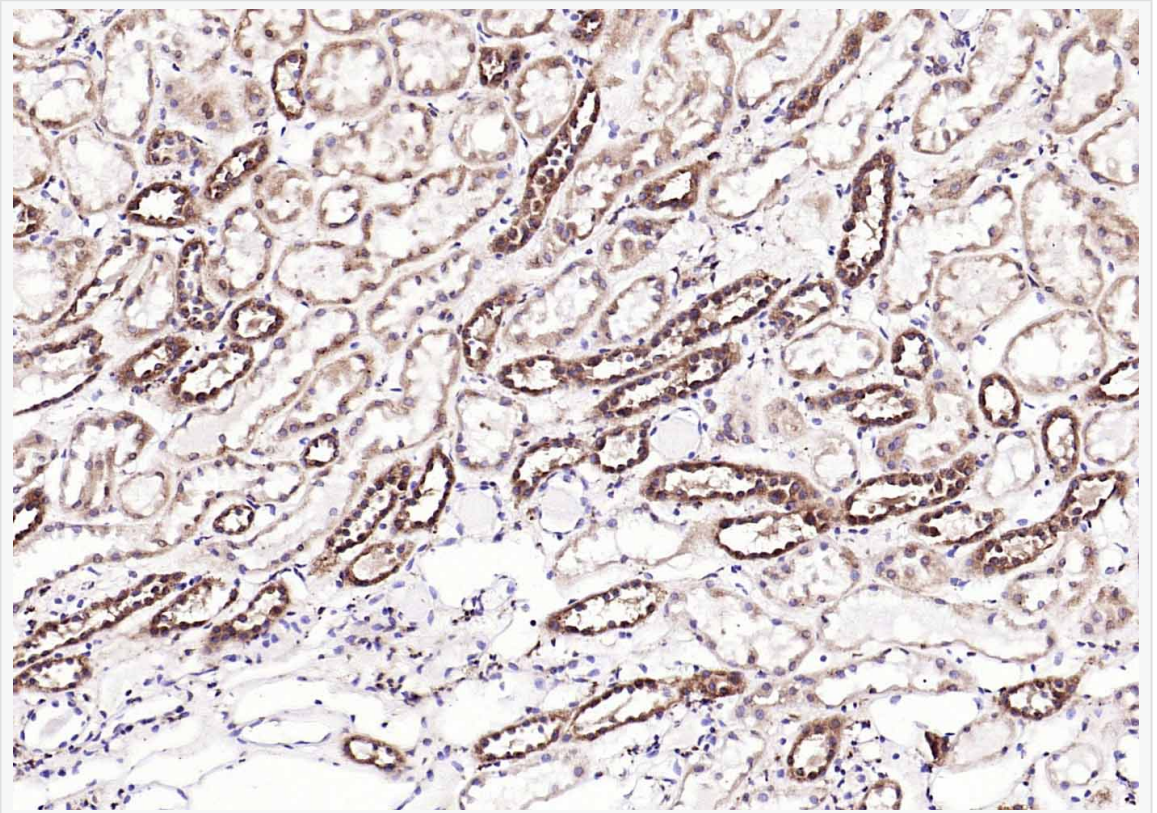
Paraformaldehyde-fixed, paraffin embedded (mouse brain); Antigen retrieval by boiling in sodium citrate buffer (pH6.0) for 15min; Block endogenous peroxidase by 3% hydrogen peroxide for 20 minutes; Blocking buffer (normal goat serum) at 37°C for 30min; Antibody incubation with (Calreticulin) Monoclonal Antibody, Unconjugated (SLM-51748M) at 1:200 overnight at 4°C, followed by operating according to SP Kit(Mouse)(sp-0024) instructionsand DAB staining.



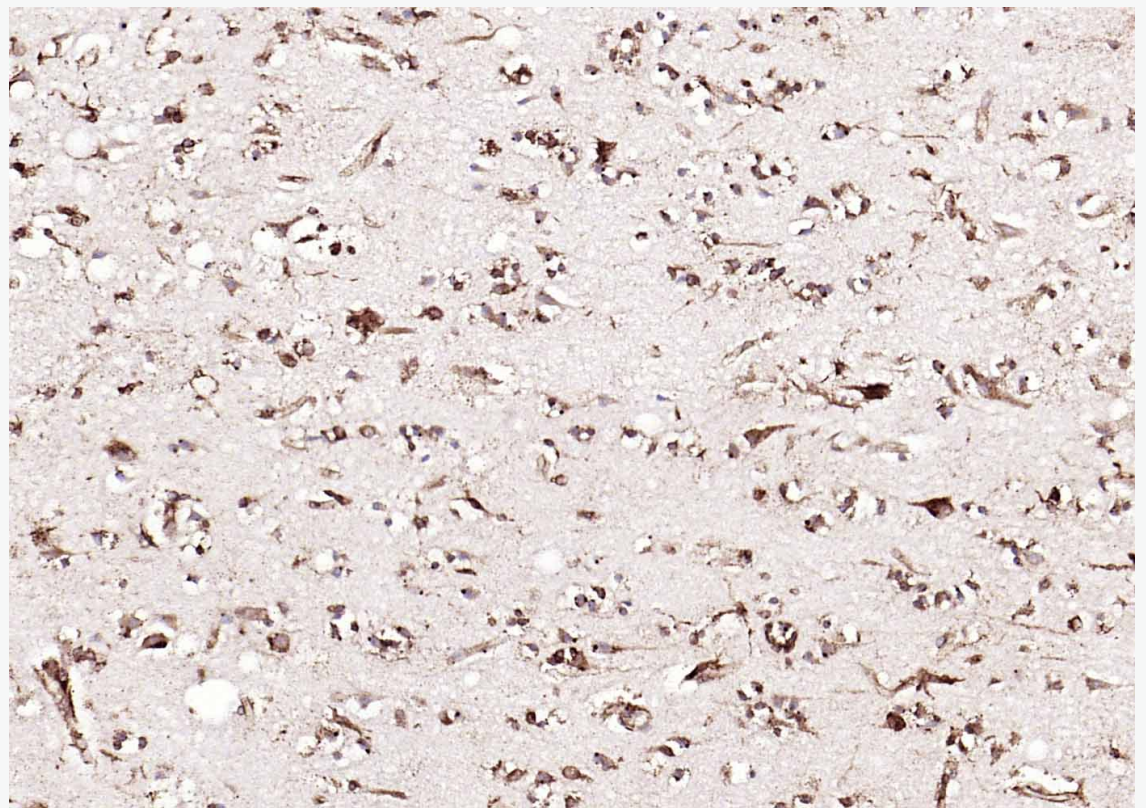
Paraformaldehyde-fixed, paraffin embedded (mouse skeletal muscle); Antigen retrieval by boiling in sodium citrate buffer (pH6.0) for 15min; Block endogenous peroxidase by 3% hydrogen peroxide for 20 minutes; Blocking buffer (normal goat serum) at 37°C for 30min; Antibody incubation with (Calreticulin) Monoclonal Antibody, Unconjugated (SLM-51748M) at 1:200 overnight at 4°C, followed by operating according to SP Kit(Mouse)(sp-0024) instructions and DAB staining.



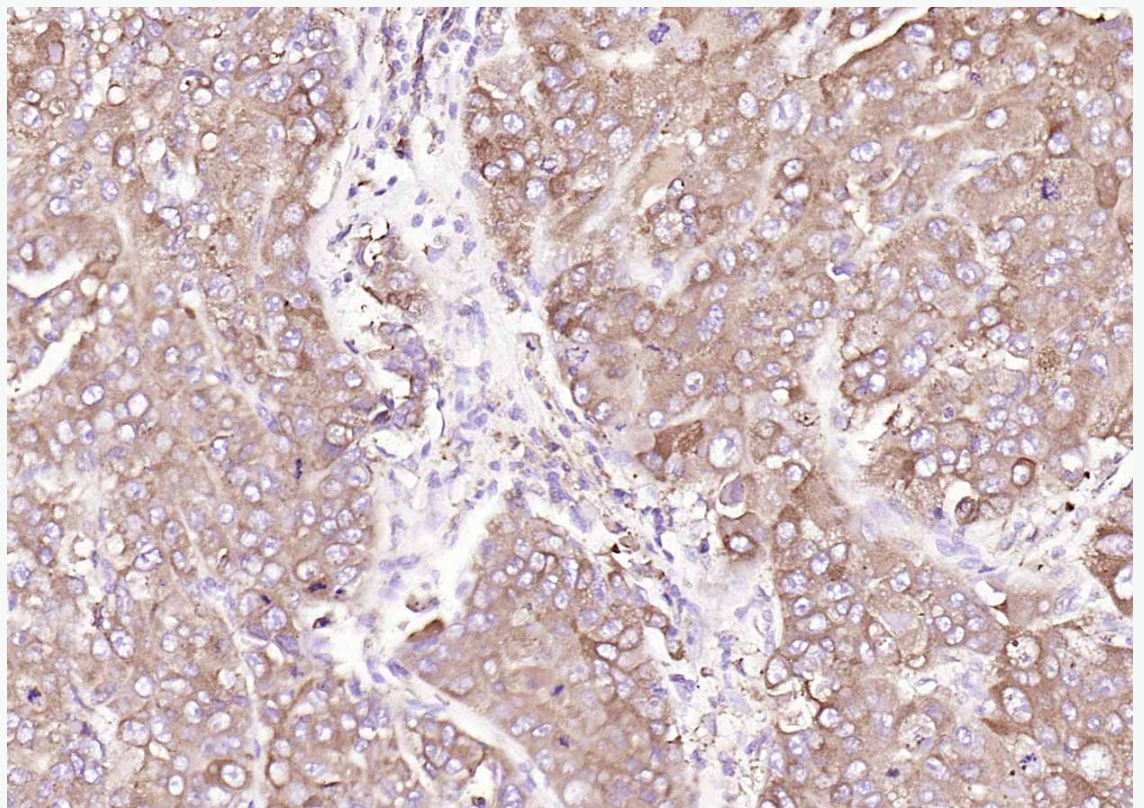
Paraformaldehyde-fixed, paraffin embedded (Human esophageal cancer); Antigen retrieval by boiling in sodium citrate buffer (pH6.0) for 15min; Block endogenous peroxidase by 3% hydrogen peroxide for 20 minutes; Blocking buffer (normal goat serum) at 37°C for 30min; Antibody incubation with (Calreticulin) Monoclonal Antibody, Unconjugated (SLM-51748M) at 1:200 overnight at 4°C, followed by operating according to SP Kit(Mouse)(sp-0024) instructions and DAB staining.



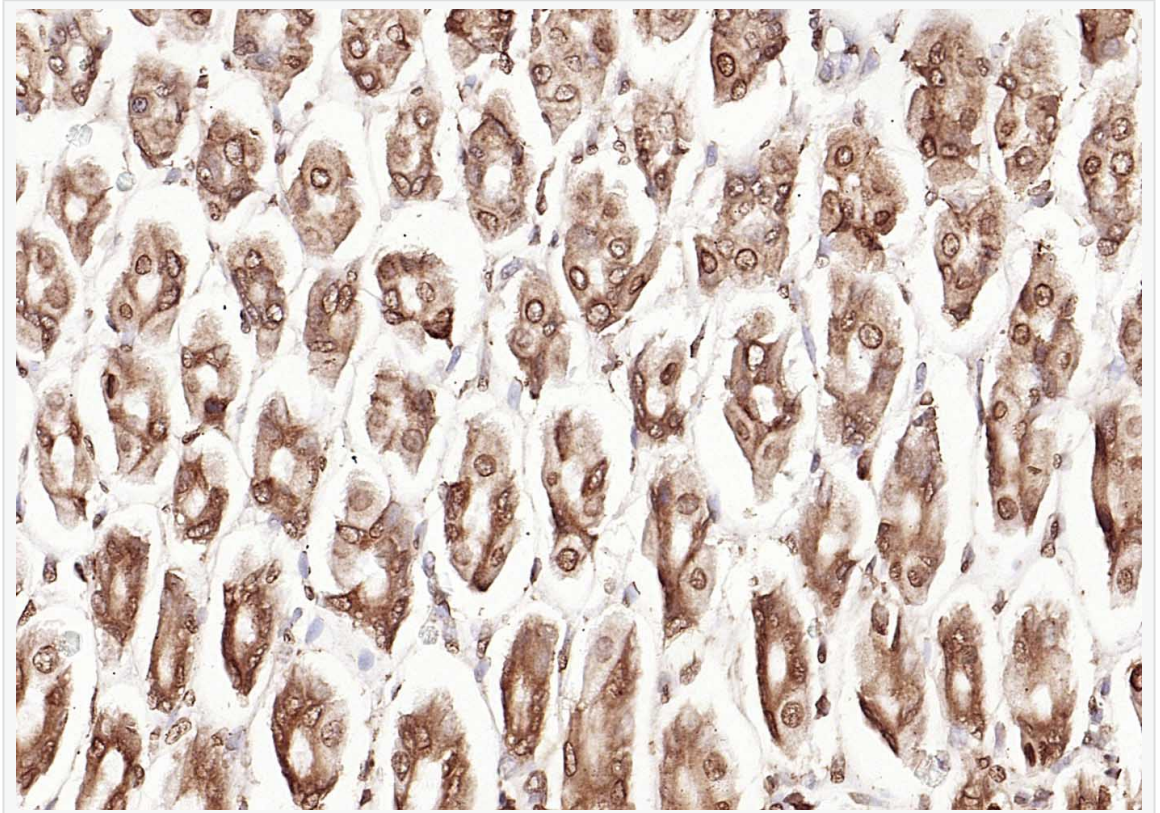
Paraformaldehyde-fixed, paraffin embedded (human kidney); Antigen retrieval by boiling in sodium citrate buffer (pH6.0) for 15min; Block endogenous peroxidase by 3% hydrogen peroxide for 20 minutes; Blocking buffer (normal goat serum) at 37°C for 30min; Antibody incubation with (Calreticulin) Monoclonal Antibody, Unconjugated (SLM-51748M) at 1:200 overnight at 4°C, followed by operating according to SP Kit(Mouse)(sp-0024) instructions and DAB staining.



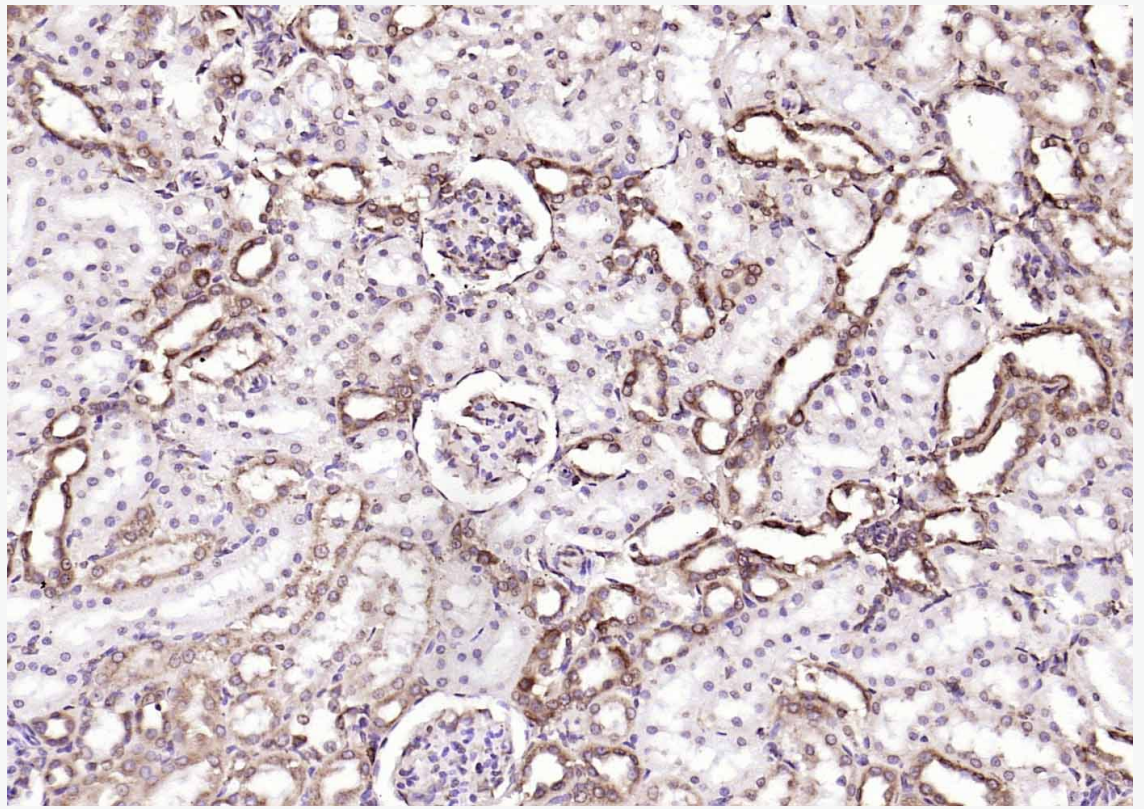
Paraformaldehyde-fixed, paraffin embedded (human brain); Antigen retrieval by boiling in sodium citrate buffer (pH6.0) for 15min; Block endogenous peroxidase by 3% hydrogen peroxide for 20 minutes; Blocking buffer (normal goat serum) at 37°C for 30min; Antibody incubation with (Calreticulin) Monoclonal Antibody, Unconjugated (SLM-51748M) at 1:200 overnight at 4°C, followed by operating according to SP Kit(Mouse)(sp-0024) instructions and DAB staining.



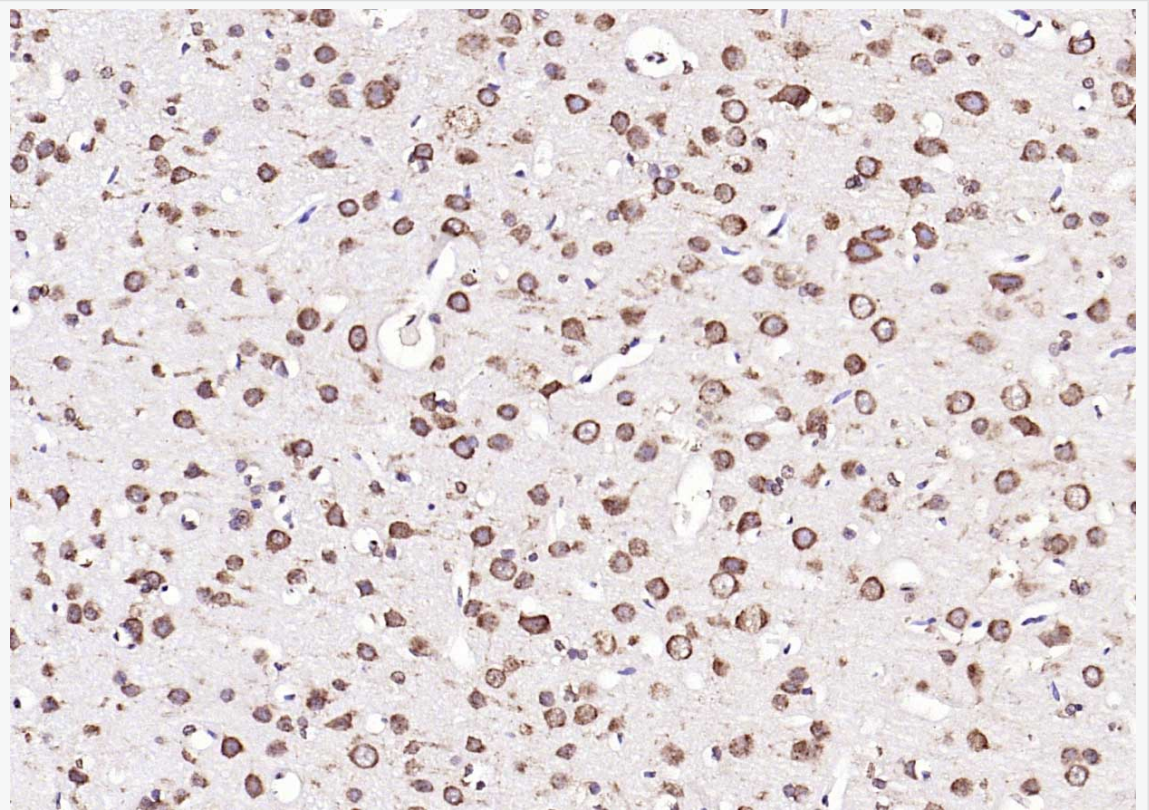
Paraformaldehyde-fixed, paraffin embedded (human liver carcinoma); Antigen retrieval by boiling in sodium citrate buffer (pH6.0) for 15min; Block endogenous peroxidase by 3% hydrogen peroxide for 20 minutes; Blocking buffer (normal goat serum) at 37°C for 30min; Antibody incubation with (Calreticulin) Monoclonal Antibody, Unconjugated (SLM-51748M) at 1:200 overnight at 4°C, followed by operating according to SP Kit(Mouse)(sp-0024) instructions and DAB staining.



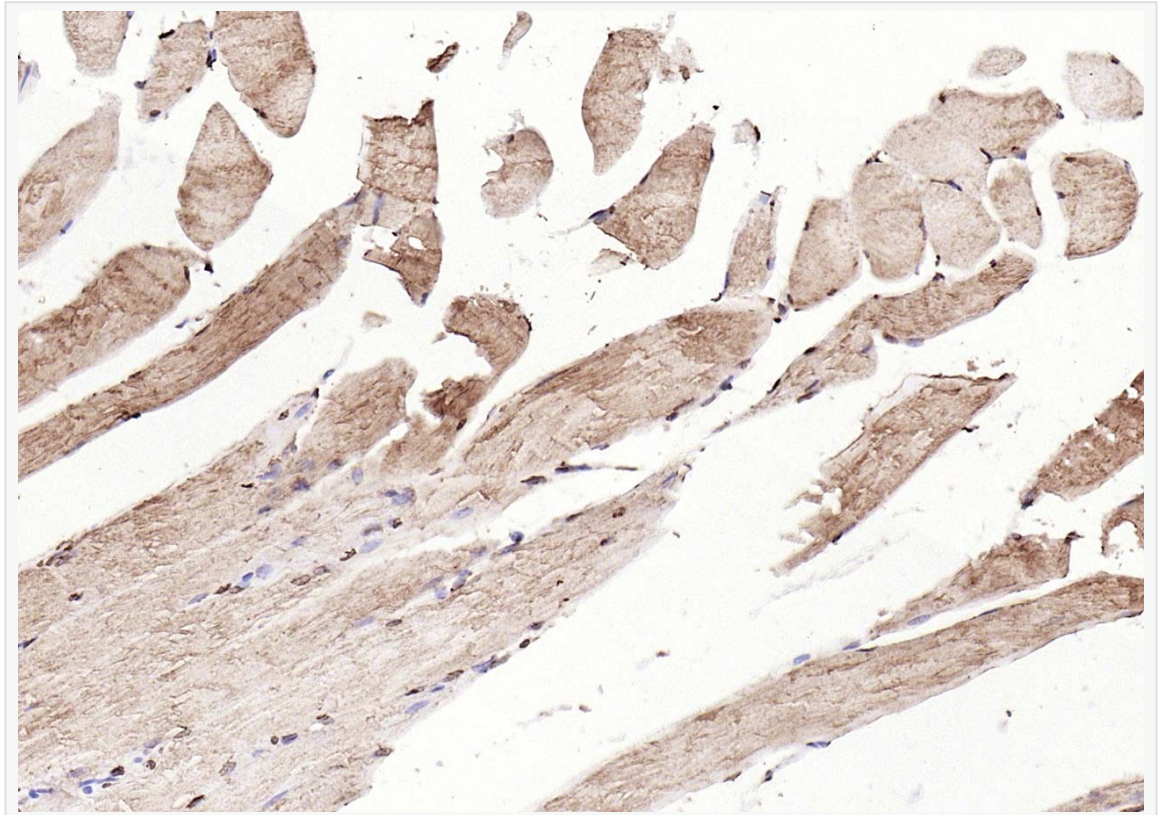
Paraformaldehyde-fixed, paraffin embedded (rat stomach); Antigen retrieval by boiling in sodium citrate buffer (pH6.0) for 15min; Block endogenous peroxidase by 3% hydrogen peroxide for 20 minutes; Blocking buffer (normal goat serum) at 37°C for 30min; Antibody incubation with (Calreticulin) Monoclonal Antibody, Unconjugated (SLM-51748M) at 1:200 overnight at 4°C, followed by operating according to SP Kit(Mouse)(sp-0024) instructions and DAB staining.



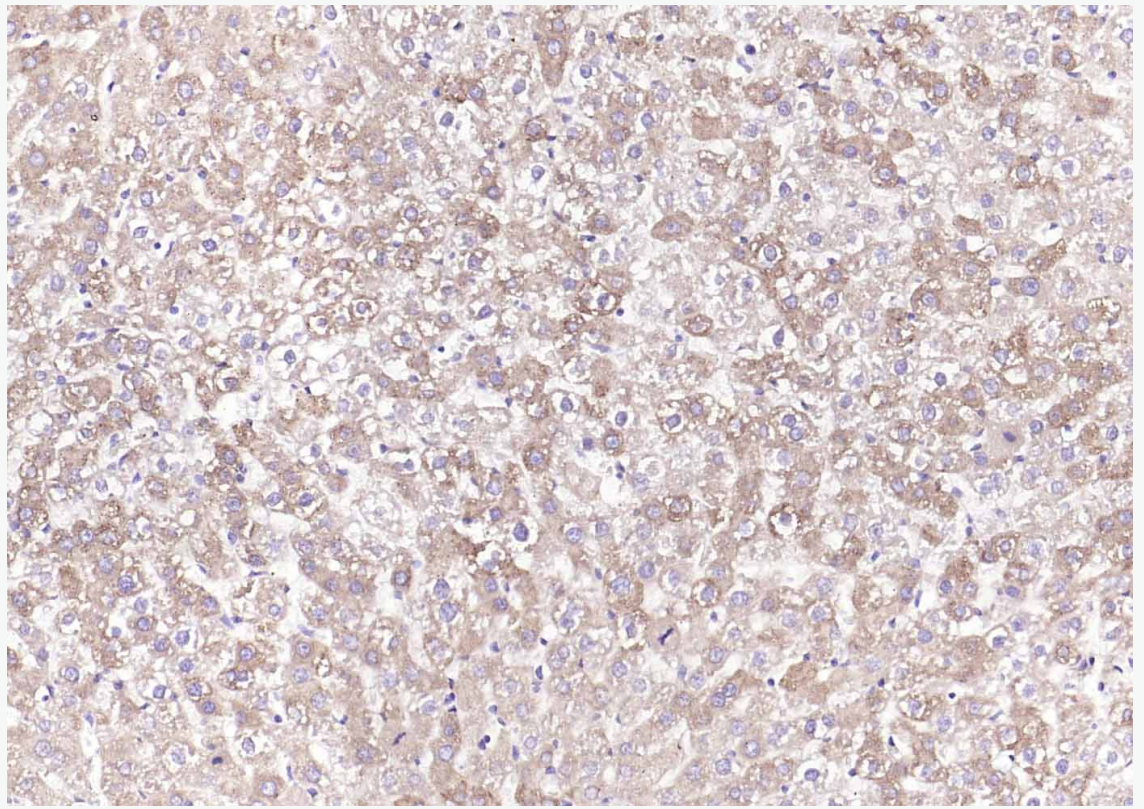
Paraformaldehyde-fixed, paraffin embedded (rat kidney); Antigen retrieval by boiling in sodium citrate buffer (pH6.0) for 15min; Block endogenous peroxidase by 3% hydrogen peroxide for 20 minutes; Blocking buffer (normal goat serum) at 37°C for 30min; Antibody incubation with (Calreticulin) Monoclonal Antibody, Unconjugated (SLM-51748M) at 1:200 overnight at 4°C, followed by operating according to SP Kit(Mouse)(sp-0024) instructions and DAB staining.



Paraformaldehyde-fixed, paraffin embedded (rat brain); Antigen retrieval by boiling in sodium citrate buffer (pH6.0) for 15min; Block endogenous peroxidase by 3% hydrogen peroxide for 20 minutes; Blocking buffer (normal goat serum) at 37°C for 30min; Antibody incubation with (Calreticulin) Monoclonal Antibody, Unconjugated (SLM-51748M) at 1:200 overnight at 4°C, followed by operating according to SP Kit(Mouse)(sp-0024) instructions and DAB staining.



Paraformaldehyde-fixed, paraffin embedded (rat skeletal muscle); Antigen retrieval by boiling in sodium citrate buffer (pH6.0) for 15min; Block endogenous peroxidase by 3% hydrogen peroxide for 20 minutes; Blocking buffer (normal goat serum) at 37°C for 30min; Antibody incubation with (Calreticulin) Monoclonal Antibody, Unconjugated (SLM-51748M) at 1:200 overnight at 4°C, followed by operating according to SP Kit(Mouse)(sp-0024) instructions and DAB staining.



Paraformaldehyde-fixed, paraffin embedded (rat liver); Antigen retrieval by boiling in sodium citrate buffer (pH6.0) for 15min; Block endogenous peroxidase by 3% hydrogen peroxide for 20 minutes; Blocking buffer (normal goat serum) at 37°C for 30min; Antibody incubation with (Calreticulin) Monoclonal Antibody, Unconjugated (SLM-51748M) at 1:200 overnight at 4°C, followed by operating according to SP Kit(Mouse)(sp-0024) instructions and DAB staining.