

Mouse Anti-SULT2B1 antibody

SLM-51745M

| | |
|-------------------------------------|--|
| Product Name | SULT2B1 |
| Chinese Name | SULT2B1 单克隆抗体 |
| Alias | Alcohol sulfotransferase; EC 2.8.2.2; HSST2; Hydroxysteroid sulfotransferase 2; ST2B1; ST2B1_HUMAN; Sulfotransferase 2B1; Sulfotransferase family cytosolic 2B member 1; SULT2B1a; SULT2B1b. |
| Research Area | Cardiovascular Signal transduction Growth factors and hormones Lipoprotein The new supersedes the old |
| Immunogen Species | Mouse |
| Clonality | Monoclonal |
| Clone NO. | C11G7 |
| React Species | Human, WB=1:500-2000 |
| Applications | not yet tested in other applications. optimal dilutions/concentrations should be determined by the end user. |
| Theoretical molecular weight | 41kDa |
| Cellular localization | cytoplasmic |
| Form | Liquid |
| Concentration | 1mg/ml |
| immunogen | Recombinant human SULT2B1. |
| Lsotype | IgG1, κ |
| Purification | affinity purified by Protein G |
| Buffer Solution | 1M TBS(pH7.4) with 1% BSA, 3% Proclin300 and 50% Glycerol. |
| Storage | Shipped at 4°C. Store at -20 °C for one year. Avoid repeated freeze/thaw cycles. |
| Attention | This product as supplied is intended for research use only, not for use in human, therapeutic or diagnostic applications. |
| PubMed | PubMed |
| Product Detail | Sulfotransferase enzymes catalyze the sulfate conjugation of many hormones, |

neurotransmitters, drugs, and xenobiotic compounds. These cytosolic enzymes are different in their tissue distributions and substrate specificities. The gene structure (number and length of exons) is similar among family members. This gene sulfates dehydroepiandrosterone but not 4-nitrophenol, a typical substrate for the phenol and estrogen sulfotransferase subfamilies. Two alternatively spliced variants that encode different isoforms have been described. [provided by RefSeq, Jul 2008]

Function:

Catalyzes the sulfate conjugation of many hormones, neurotransmitters, drugs and xenobiotic compounds. Sulfonation increases the water solubility of most compounds, and therefore their renal excretion, but it can also result in bioactivation to form active metabolites. Sulfates hydroxysteroids like DHEA. Isoform 1 preferentially sulfonates cholesterol, and isoform 2 avidly sulfonates pregnenolone but not cholesterol.

Subcellular Location:

Cytoplasm.

Tissue Specificity:

Expressed highly in placenta, prostate and trachea and lower expression in the small intestine and lung.

Similarity:

Belongs to the sulfotransferase 1 family.

SWISS:

O00204

Gene ID:

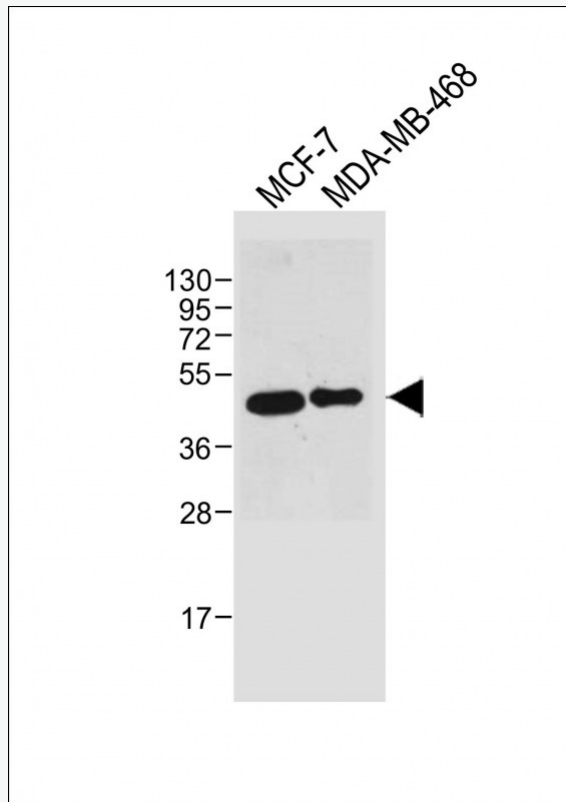
6820

Database links:

[Entrez Gene: 6820](#) Human

[SwissProt: O00204](#) Human

Product Picture



Sample:

Lane 1: MCF-7 cell lysates

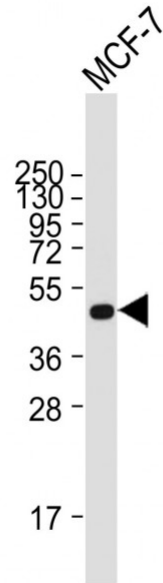
Lane 2: MDA-MB-468 cell lysates

Primary: Anti-SULT2B1 (SLM-51745M) at 1/2000 dilution

Secondary: IRDye800CW Goat Anti-Mouse IgG at 1/20000 dilution

Predicted band size: 41 kD

Observed band size: 50 kD



Sample:

Lane 1: MCF-7 cell lysates

Primary: Anti-SULT2B1 (SLM-51745M) at 1/2000 dilution

Secondary: IRDye800CW Goat Anti-Mouse IgG at 1/20000 dilution

Predicted band size: 41 kD

Observed band size: 50 kD