

Mouse Anti-PLIN3 antibody

SLM-51728M

| | |
|-------------------------------------|---|
| Product Name | PLIN3 |
| Chinese Name | PLIN3 单克隆抗体 |
| Alias | TIP47; PLIN3_HUMAN; 47 kDa MPR binding protein; Cargo selection protein TIP47; M6PRBP 1; M6PRBP1; Mannose 6 phosphate receptor binding protein 1; MGC11117; MGC2012; MPR binding protein 47 kDa; Perilipin 3; Perilipin3; Perilipin-3; Placental protein 17; PLIN3; PP17. |
| Research Area | Signal transduction |
| Immunogen Species | Mouse |
| Clonality | Monoclonal |
| Clone NO. | D2A3 |
| React Species | Human, WB=1:500-2000,Flow-Cyt=1:20-50 |
| Applications | not yet tested in other applications. optimal dilutions/concentrations should be determined by the end user. |
| Theoretical molecular weight | 48kDa |
| Cellular localization | cytoplasmic The cell membrane |
| Form | Liquid |
| Concentration | 1mg/ml |
| immunogen | KLH conjugated synthetic peptide derived from human PLIN3: 1-434/434 |
| Lsotype | IgG2a,k |
| Purification | affinity purified by Protein G |
| Buffer Solution | 1M TBS(pH7.4) with 1% BSA, 3% Proclin300 and 50% Glycerol. |
| Storage | Shipped at 4°C. Store at -20 °C for one year. Avoid repeated freeze/thaw cycles. |
| Attention | This product as supplied is intended for research use only, not for use in human, therapeutic or diagnostic applications. |
| PubMed | PubMed |
| Product Detail | Mannose 6-phosphate receptors (MPRs) deliver lysosomal hydrolase from the |

Golgi to endosomes and then return to the Golgi complex. The protein encoded by this gene interacts with the cytoplasmic domains of both cation-independent and cation-dependent MPRs, and is required for endosome-to-Golgi transport. This protein also binds directly to the GTPase RAB9 (RAB9A), a member of the RAS oncogene family. The interaction with RAB9 has been shown to increase the affinity of this protein for its cargo. Multiple transcript variants encoding different isoforms have been found for this gene.[provided by RefSeq, Aug 2009]

Subunit:

Homooligomer. Interacts with M6PR (via the cytoplasmic domain). Interacts with IGF2R (via the cytoplasmic domain). Isoform 2 may exist as a homodimer (known as PP17C).

Subcellular Location:

Cytoplasm. Endosome membrane; Peripheral membrane protein; Cytoplasmic side (Potential). Lipid droplet (Potential). Note=Membrane associated on endosomes. Detected in the envelope and the core of lipid bodies and in lipid sails.

Similarity:

Belongs to the perilipin family.

SWISS:

O60664

Gene ID:

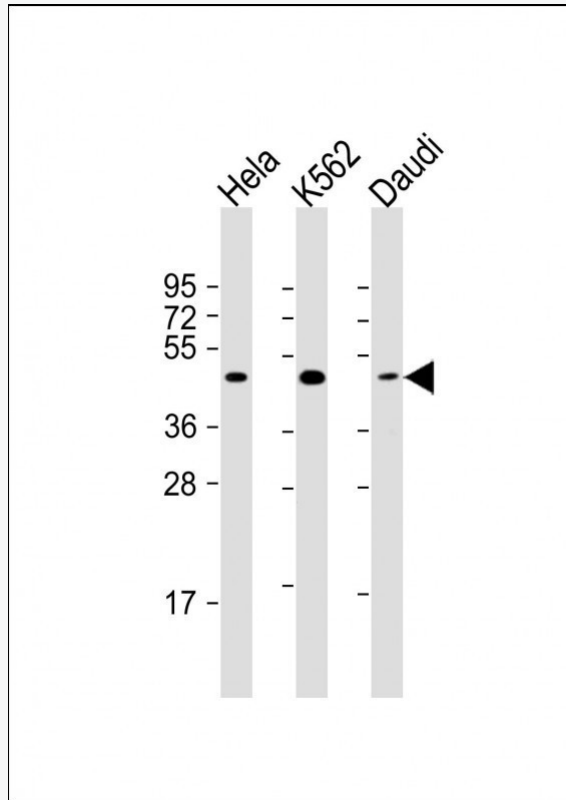
10226

Database links:

[Entrez Gene: 10226](#) Human

[SwissProt: O60664](#) Human

Product Picture



Sample:

Lane 1: HeLa cell lysates

Lane 2: K562 cell lysates

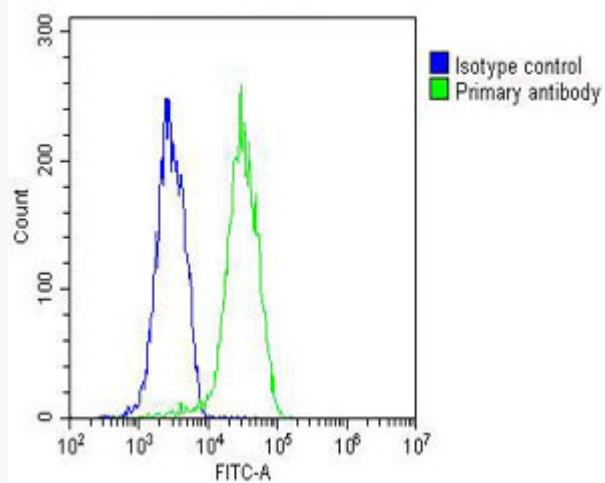
Lane 3: Daudi cell lysates

Primary: Anti-PLIN3 (SLM-51728M) at 1/2000 dilution

Secondary: IRDye800CW Goat Anti-Mouse IgG at 1/20000 dilution

Predicted band size: 48 kD

Observed band size: 48 kD



Blank control: HUVEC.

Primary Antibody (green line): Mouse Anti-PLIN3 antibody
(SLM-51728M)

Dilution: 1:25;

Isotype Control Antibody (blue line): Mouse IgG Secondary Antibody :
Goat anti-mouse IgG-AF488

Dilution: 1:200 Protocol

The cells were fixed with 4% PFA (10min at room temperature)and then permeabilized with 90% ice-cold methanol for 20 min at -20°C. The cells were then incubated in 5%BSA to block non-specific protein-protein interactions for 30 min at room temperature .Cells stained with Primary Antibody for 30 min at room temperature. The secondary antibody used for 40 min at room temperature. Acquisition of 20,000 events was performed.



SunLong Biotech Co.,LTD
Tel: 0086-571-56623320 Fax:0086-571-56623318
E-mail:sales@sunlongbiotech.com
www.sunlongbiotech.com
